

Product datasheet for **RC204466L4V**

Claudin 1 (CLDN1) (NM_021101) Human Tagged ORF Clone Lentiviral Particle

Product data:

| | |
|---------------------------|--|
| Product Type: | Lentiviral Particles |
| Product Name: | Claudin 1 (CLDN1) (NM_021101) Human Tagged ORF Clone Lentiviral Particle |
| Symbol: | Claudin 1 |
| Synonyms: | CLD1; ILVASC; SEMP1 |
| Mammalian Cell Selection: | Puromycin |
| Vector: | pLenti-C-mGFP-P2A-Puro (PS100093) |
| Tag: | mGFP |
| ACCN: | NM_021101 |
| ORF Size: | 633 bp |
| ORF Nucleotide Sequence: | The ORF insert of this clone is exactly the same as(RC204466). |
| OTI Disclaimer: | The molecular sequence of this clone aligns with the gene accession number as a point of reference only. However, individual transcript sequences of the same gene can differ through naturally occurring variations (e.g. polymorphisms), each with its own valid existence. This clone is substantially in agreement with the reference, but a complete review of all prevailing variants is recommended prior to use. More info |
| OTI Annotation: | This clone was engineered to express the complete ORF with an expression tag. Expression varies depending on the nature of the gene. |
| RefSeq: | NM_021101.3 |
| RefSeq Size: | 3452 bp |
| RefSeq ORF: | 636 bp |
| Locus ID: | 9076 |
| UniProt ID: | O95832 |
| Cytogenetics: | 3q28 |
| Domains: | PMP22_Claudin |
| Protein Families: | Transmembrane |



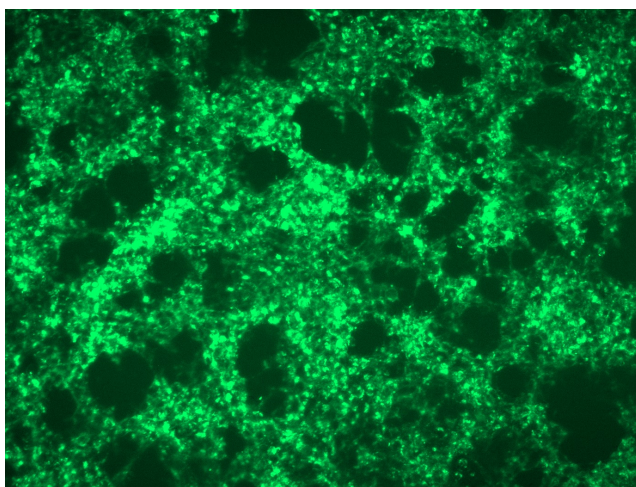
[View online »](#)

Protein Pathways: Cell adhesion molecules (CAMs), Leukocyte transendothelial migration, Pathogenic Escherichia coli infection, Tight junction

MW: 22.7 kDa

Gene Summary: Tight junctions represent one mode of cell-to-cell adhesion in epithelial or endothelial cell sheets, forming continuous seals around cells and serving as a physical barrier to prevent solutes and water from passing freely through the paracellular space. These junctions are comprised of sets of continuous networking strands in the outwardly facing cytoplasmic leaflet, with complementary grooves in the inwardly facing extracytoplasmic leaflet. The protein encoded by this gene, a member of the claudin family, is an integral membrane protein and a component of tight junction strands. Loss of function mutations result in neonatal ichthyosis-sclerosing cholangitis syndrome. [provided by RefSeq, Jul 2008]

Product images:



[RC204466L4] was used to prepare Lentiviral particles using [TR30037] packaging kit. HEK293T cells were transduced with RC204466L4V particle to overexpress human CLDN1-mGFP fusion protein.