

Product datasheet for **RC204455**

SECTM1 (NM_003004) Human Tagged ORF Clone

Product data:

Product Type:	Expression Plasmids
Product Name:	SECTM1 (NM_003004) Human Tagged ORF Clone
Tag:	Myc-DDK
Symbol:	SECTM1
Synonyms:	K12; SECTM
Mammalian Cell Selection:	Neomycin
Vector:	pCMV6-Entry (PS100001)
E. coli Selection:	Kanamycin (25 ug/mL)
ORF Nucleotide Sequence:	>RC204455 ORF sequence Red=Cloning site Blue=ORF Green=Tags(s)

TTTTGTAATACGACTCACTATAGGGCGCCGGGAATTCGTCGACTGGATCCGGTACCGAGGAGATCTGCC
GCC**CGATCGCC**

ATGCAGACCTGCCCCCTGGCATTCCCTGGCCACGTTTCCAGGCCCTGGGACCCTCCTGTTTTGGCTG
CCTCCTTGAGTGCTCAGAATGAAGGCTGGGACAGCCCATCTGCACAGAGGGGTAGTCTCTGTGCTTG
GGGCGAGAACACCGTCATGTCTGCAACATCTCCAACGCCTTCTCCCATGTCAACATCAAGCTGCGTGCC
CACGGGCAGGAGAGCGCCATCTCAATGAGGTGGCTCCAGGCTACTTCTCCGGGACGGCTGGCAGCTCC
AGGTTCCAGGGAGGCGTGGCACAGCTGGTATCAAAGGCGCCGGGACTCCCATGTGGGCTGTACATGTG
GCACCTCGTGGGACACCAGAGAAATAACAGACAAGTACGCTGGAGGTTTCAGGTGCAGAACCCAGTCC
GCCCTGACACTGGGTTCTGGCCTGTGCCAGCGGTGGTCACTGCTGTCTTCATCCTTTGGTCTGCTCTGG
TCATGTTTCGCTGGTACAGGTGCCGCTGTTCCAGCAACGCCGGGAGAAGAAGTTCTTCTCCTAGAACCC
CCAGATGAAGTTCGCAGCCCTCAGAGCGGGAGCCAGCAGGGCCTGAGCAGAGCCTCCGCTGAAGTGTGG
ACCCAGACTCCGAGCCCAAGGCCGCTGGCACTGGTGTCAAACCCTCACCATTGGAGCCCTGG
AGCTGCTGTCCCCCAACCCTTGTTCATATGCCGAGACCA

ACGCGTACGCGGCCGCTCGAGCAGAACTCATCTCAGAAGAGGATCTGGCAGCAAATGATATCCTGGATT
ACAAGGATGACGACGATAAGGTTTAA



[View online »](#)

Protein Sequence: >RC204455 protein sequence
 Red=Cloning site Green=Tags(s)

MQTCLAFPGHVSQALGTLFLAASLSAQNEGWDSPICTEGVVSVWGENTVMSCNISNAFVSHVNIKLRA
 HGQESAIFNEVAPGYFSRDGWLQVQGGVAQLVIKGARDSHAGLYMWHLVGHQRNNRQVTLVSGAEPQS
 APDTGFWPVPAVVTAVFILLVALVMFAWYRCRCSQQRREKFFLLEPQMKFAALRAGAQQGLSRASAEI
 WTPDSETPRPLALVFKPSPLGALELLSPQPLFPYAADP

TRTRPLEQKLISEEDLAANDILDYKDDDDKV

Chromatograms: https://cdn.origene.com/chromatograms/mk6311_c08.zip

Restriction Sites: SgfI-MluI

Cloning Scheme:

Cloning sites used for ORF Shuttling:



* The last codon before the Stop codon of the ORF

ACCN: NM_003004

ORF Size: 744 bp

OTI Disclaimer: The molecular sequence of this clone aligns with the gene accession number as a point of reference only. However, individual transcript sequences of the same gene can differ through naturally occurring variations (e.g. polymorphisms), each with its own valid existence. This clone is substantially in agreement with the reference, but a complete review of all prevailing variants is recommended prior to use. [More info](#)

OTI Annotation: This clone was engineered to express the complete ORF with an expression tag. Expression varies depending on the nature of the gene.

Components: The ORF clone is ion-exchange column purified and shipped in a 2D barcoded Matrix tube containing 10ug of transfection-ready, dried plasmid DNA (reconstitute with 100 ul of water).

Reconstitution Method:

1. Centrifuge at 5,000xg for 5min.
2. Carefully open the tube and add 100ul of sterile water to dissolve the DNA.
3. Close the tube and incubate for 10 minutes at room temperature.
4. Briefly vortex the tube and then do a quick spin (less than 5000xg) to concentrate the liquid at the bottom.
5. Store the suspended plasmid at -20°C. The DNA is stable for at least one year from date of shipping when stored at -20°C.

RefSeq: [NM_003004.3](#)

RefSeq Size: 2282 bp

RefSeq ORF: 747 bp

Locus ID: 6398

UniProt ID: [Q8WVN6](#)

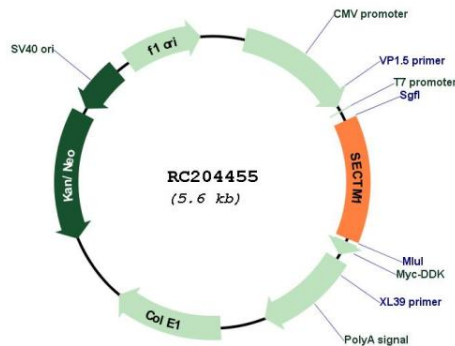
Cytogenetics: 17q25.3

Protein Families: Secreted Protein, Transmembrane

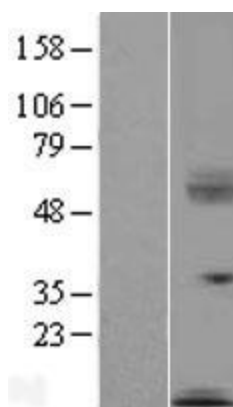
MW: 27.1 kDa

Gene Summary: This gene encodes a transmembrane and secreted protein with characteristics of a type 1a transmembrane protein. It is found in a perinuclear Golgi-like pattern and thought to be involved in hematopoietic and/or immune system processes. [provided by RefSeq, Jul 2008]

Product images:



Circular map for RC204455



Western blot validation of overexpression lysate (Cat# [LY418959]) using anti-DDK antibody (Cat# [TA50011-100]). Left: Cell lysates from untransfected HEK293T cells; Right: Cell lysates from HEK293T cells transfected with RC204455 using transfection reagent MegaTran 2.0 (Cat# [TT210002]).