

Product datasheet for RC204452

SEC62 (NM_003262) Human Tagged ORF Clone

Product data:

Product Type:	Expression Plasmids
Product Name:	SEC62 (NM_003262) Human Tagged ORF Clone
Tag:	Myc-DDK
Symbol:	SEC62
Synonyms:	Dtrp1; HTP1; TLOC1; TP-1
Mammalian Cell Selection:	Neomycin
Vector:	pCMV6-Entry (PS100001)
E. coli Selection:	Kanamycin (25 ug/mL)
ORF Nucleotide Sequence:	>RC204452 representing NM_003262 Red=Cloning site Blue=ORF Green=Tags(s)

TTTTGTAATACGACTCACTATAGGGCGGCCGGAATTCGTCGACTGGATCCGGTACCGAGGAGATCTGCC
GCC**CGATCGCC**

ATGGCGGAACGCAGGAGACACAAGAAGCGGATCCAGGAAGTTGGTGAACCATCTAAAGAAGAGAAGGCTG
TGGCCAAGTATCTTCGATTCAACTGTCCAACAAAGTCCACCAATATGATGGGTACCCGGTTGATTATTT
TATTGCTTCAAAGCAGTGGACTGTCTTTGGATTCAAAGTGGGCAAAGGCCAAGAAAGGAGAGGAAAGCT
TTATTTACAACCAGGGAGTCTGTGGTTGACTACTGCAACAGGCTTTTAAAGAAGCAGTTTTTTCCACGAG
CCCTAAAAGTAATGAAAATGAAATATGATAAAGACATAAAGAAAGAAAAAGATAAAGGAAAAGCTGAAAG
TGGAAAAGAAGAAGATAAAAAGAGCAAGAAAGAAAATATAAAGGATGAGAAGACAAAAAGAAAAGAG
AAAAAAAAGATGGTGAAGGAAGAATCCAAAAAGGAGGAAACTCCAGGAACTCTAAAAAGAAAGAAA
CTAAGAAAAAATCAAACCTTGAGCCACATGATGATCAGGTTTTCTGGATGGAATGAGGTGATGTATG
GATCTATGACCCAGTTCACCTTAAAAACATTTGTCATGGGATTAATCTTGTGATTGCAGTAATAGCGGCC
ACCCTCTCCCTTTGGCCAGCAGAAATGAGAGTAGGTGTTTATTACCTCAGTGTGGGTGCAGGCTGTT
TTGTAGCCAGTATTCTTCTCCTTGCTGTGCTCGATGCATTCTATTTCTCATCTTTGGCTCATACTGG
AGGAAGGCACCACTTTTGGTTCTTGCCAAATCTGACTGCTGATGTGGGCTTCATTGACTCCTTCAGGCT
CTGTACACACATGAATACAAAGGACCAAAAGCAGACTTAAAGAAAGATGAGAAGCTGAAACCAAAAAGC
AACAGAAGTCCGACAGTGAAGAAAAGTCAAGACAGTGAAGAAAAGGAAGATGAGGAGGGAAAAGTAGGACC
AGGAAATCATGGAACAGAAAGGCTCGGGGGGAGAACGGCATTGAGACACGGACAGTACAGGAGGGAAGAT
GATCGATCCCAGCACAGTAGTGGAAATGGAATGATTTTGAATGATAACAAAAGAGGAACTGGAACAGC
AAACAGATGGGGATTGTGAAGAGGATGAGGAAGAGGAAAATGATGGAGAAACACCTAAATCTTCACATGA
AAAATCA

ACGCGTACGCGGCCGCTCGAGCAGAAACTCATCTCAGAAGAGGATCTGGCAGCAATGATATCCTGGATT
ACAAGGATGACGACGATAAGGTTTAA



[View online »](#)

Protein Sequence: >RC204452 representing NM_003262
Red=Cloning site Green=Tags(s)

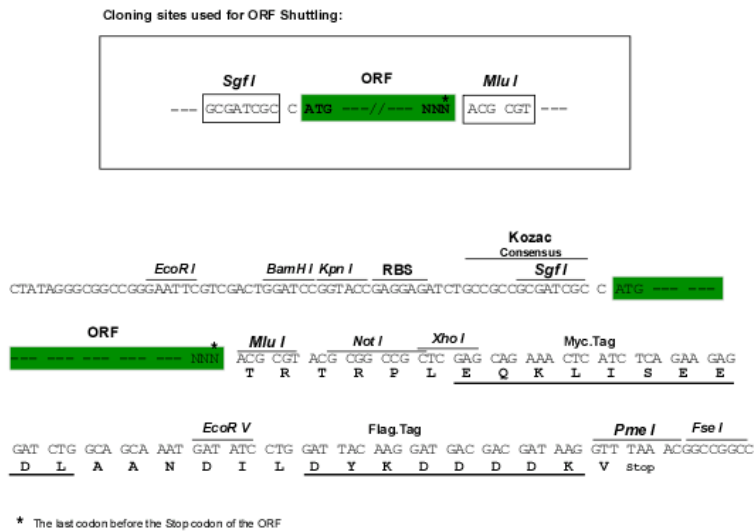
MAERRRHKKRIQEVEGPEPSKEEKAVAKYLRFNCPTKSTNMMGHRVDYFIASKAVDCLLDSKWAKAKKGEEA
 LFTTRESVVDYCNRLKKQFFHRALKVMKMYDKDIKKEKDKGAESGKEEDKSKKENIKDEKTKKEE
 KKKDGEKEESKKEETPGTPKKKETKKKFKLEPHDDQVFLDGNVYVWIYDPVHFKTFVMGLILVIAVIAA
 TLFPLWPAEMRVGVYYLSVGAGCFVASILLLAVARCILFLIIWLITGGRHHFWFLPNLTADVGFIDSFRL
 LYTHEYKGPKADLKKDEKSETKKQKSDSEEKSDSEKKEDEEGKVGPGNHGTEGSGGERHSDDTSDRRRED
 DRSQHSNGNDFEMITKEELEQQTDGDCEEDEEEENDGETPKSSHEKS

TRTRPLEQKLISEEDLAANDILDYKDDDDKV

Chromatograms: https://cdn.origene.com/chromatograms/mg4319_f10.zip

Restriction Sites: SgfI-MluI

Cloning Scheme:



ACCN: NM_003262

ORF Size: 1197 bp

OTI Disclaimer: The molecular sequence of this clone aligns with the gene accession number as a point of reference only. However, individual transcript sequences of the same gene can differ through naturally occurring variations (e.g. polymorphisms), each with its own valid existence. This clone is substantially in agreement with the reference, but a complete review of all prevailing variants is recommended prior to use. [More info](#)

OTI Annotation: This clone was engineered to express the complete ORF with an expression tag. Expression varies depending on the nature of the gene.

Components: The ORF clone is ion-exchange column purified and shipped in a 2D barcoded Matrix tube containing 10ug of transfection-ready, dried plasmid DNA (reconstitute with 100 ul of water).

Reconstitution Method:

1. Centrifuge at 5,000xg for 5min.
2. Carefully open the tube and add 100ul of sterile water to dissolve the DNA.
3. Close the tube and incubate for 10 minutes at room temperature.
4. Briefly vortex the tube and then do a quick spin (less than 5000xg) to concentrate the liquid at the bottom.
5. Store the suspended plasmid at -20°C. The DNA is stable for at least one year from date of shipping when stored at -20°C.

RefSeq: [NM_003262.4](#)

RefSeq Size: 6541 bp

RefSeq ORF: 1200 bp

Locus ID: 7095

UniProt ID: [Q99442](#)

Cytogenetics: 3q26.2

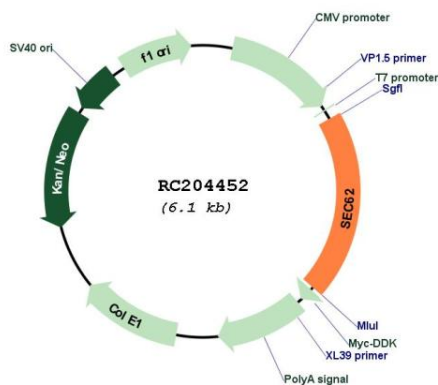
Domains: Sec62

Protein Families: Druggable Genome, Transmembrane

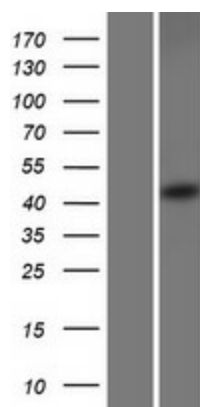
MW: 45.7 kDa

Gene Summary: The Sec61 complex is the central component of the protein translocation apparatus of the endoplasmic reticulum (ER) membrane. The protein encoded by this gene and SEC63 protein are found to be associated with ribosome-free SEC61 complex. It is speculated that Sec61-Sec62-Sec63 may perform post-translational protein translocation into the ER. The Sec61-Sec62-Sec63 complex might also perform the backward transport of ER proteins that are subject to the ubiquitin-proteasome-dependent degradation pathway. The encoded protein is an integral membrane protein located in the rough ER. [provided by RefSeq, Jul 2008]

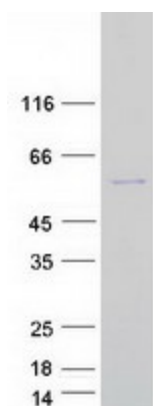
Product images:



Circular map for RC204452



Western blot validation of overexpression lysate (Cat# [LY418802]) using anti-DDK antibody (Cat# [TA50011-100]). Left: Cell lysates from untransfected HEK293T cells; Right: Cell lysates from HEK293T cells transfected with RC204452 using transfection reagent MegaTran 2.0 (Cat# [TT210002]).



Coomassie blue staining of purified SEC62 protein (Cat# [TP304452]). The protein was produced from HEK293T cells transfected with SEC62 cDNA clone (Cat# RC204452) using MegaTran 2.0 (Cat# [TT210002]).