

Product datasheet for **RC204450**

Cleavage stimulation factor 2 (CSTF2) (NM_001325) Human Tagged ORF Clone

Product data:

Product Type:	Expression Plasmids
Product Name:	Cleavage stimulation factor 2 (CSTF2) (NM_001325) Human Tagged ORF Clone
Tag:	Myc-DDK
Symbol:	Cleavage stimulation factor 2
Synonyms:	CstF-64
Mammalian Cell Selection:	Neomycin
Vector:	pCMV6-Entry (PS100001)
E. coli Selection:	Kanamycin (25 ug/mL)



[View online »](#)

ORF Nucleotide Sequence:

>RC204450 ORF sequence
 Red=Cloning site Blue=ORF Green=Tags(s)

TTTTGTAATACGACTCACTATAGGGCGGCCGGAATTCGTCGACTGGATCCGGTACCGAGGAGATCTGCC
 GCC**CGGATCGCC**

ATGGCGGGTTTGACTGTGAGAGACCCAGCGGTGGATCGTTCTCTACGTTCTGTGTTCTGGGGAACATTC
 CTTATGAAGCTACTGAAGAGCAGTTGAAGGACATCTTTCTGAGGTTGGACCTGTTGTTAGTTTCAGATT
 GGTATACGATAGAGAGACAGAAAGCCAAAGGGTTATGGCTTCTGTGAATACCAAGACCAAGAGACAGCA
 CTTAGTGCCATGCGGAACCTGAATGGGCGCAATTGAGTGGGAGAGCACTTCGAGTGGACAATGCTGCCA
 GTGAAAAGAACAAGAAGAGCTGAAGAGCCTTGGCACTGGTCCCTGTCATTGAGTACCTTATGGAGA
 GACCATCAGTCTGAGGATGCCCTGAGTCCATTAGCAAAGCAGTTGCCAGCCTCCACCAGAGCAGATG
 TTTGAGCTGATGAAACAAATGAAGCTCTGTGTCCAGAATAGTCCCAGGAGGCACGGAACATGTTACTTC
 AGAACCTCAACTGGCTTATGCTTGTGCAAGCACAGGTAGTGTGAGAATTGGGATCCGAAATTC
 CCTGAAAATTCTGCATCGCCAGACAAATATCCCAACGCTGATTGCAGGCAACCTCAGCCAGTCCATGGT
 GCTGGGCCTGGCTCAGGATCCAATGTGTCAATGAACCAGCAGAATCCTCAGGCCCTCAGGCCAGTCTT
 TGGGTGGAATGCATGTCAATGGCGCACCTCCTCTGATGCAAGCTTCTATGCAAGGTGGAGTTCACGACC
 AGGGCAAATGCCAGCTGTGTACAGGACCTGGCCCTGGTTCTTAGCTCCTGGAGGAGGAATGCAGGCT
 CAGGTTGGAATGCCAGGAAGTGGACCAAGTCCATGGAACGGGGCAAGTCCGATGCAAGACCCAGAG
 CAGCTATGCAGCGGGATCCTTGCTGCGAATGTCCCAACCCCTCGAGGCTTGTAGGAGATGCTCCGAA
 TGATCCACGGGGAGGCACCTTACTTTCTGTAAGTGGAGAGGTAGAGCCTAGAGGTTACTTGGGACCACCT
 CATCAGGGTCCACCCATGCACCATGTCCCTGGCCATGAGAGCCGAGGACCACCCACATGAATGAGGGG
 GAGGCCATTACCCGAGCCAGACCTTAATGGCAGAACCAAGAGGACCCATGCTAGATCAGAGGGTCC
 ACCCTTGATGGCAGAGGTGGAAGGGATCCCGAGGAATAGATGCACGAGGGATGGAGGCCGAGCCATG
 GAGGCAAGAGGGTTAGATGCCAGAGGATTAGAGGCCCGTCAATGGAGGCCCGTGCATGGAAGCTCGTG
 CAATGGAGGCCGAGCGATGGAGGCCCGTCAATGGAAGTCCGAGGGATGGAGGCCAGAGGCATGGATAC
 CAGAGGCCAGTGCCTGGCCCCAGAGGACCTATACCTAGTGAATGCAGGGTCCAGTCCAATTAACATG
 GGGCGGTTGTCCCCAGGGATCCAGACAGGTCCAGTGCAGGGAACAGGAATGCAAGGAGCAAGTA
 TACAGGGTGAAGCCAGCCTGGCGGCTTAGTCCCGGCAGAACCAAGTCACTCCACAGGATCATGAGAA
 GGCTGCTTTGATTATGCAGGTTCTACAAGTACTGCAGACCAGATTGCCATGTTGCCTCCTGAGCAAAGG
 CAGAGTATCTGATTTTAAAGGAACAAATACAGAAATCCACTGGAGCACCT

ACGCGTACGCGGCCGCTCGAGCAGAAACTCATCTCAGAAGAGGATCTGGCAGCAAATGATATCCTGGATT
 ACAAGGATGACGACGATAAGGTTTAA

Protein Sequence:

>RC204450 protein sequence
 Red=Cloning site Green=Tags(s)

MAGLTVRDPVDRSLRSVFNIPYEATEEQLKDFSEVGPVVSFRLVYDRETGKPKGYGFCEYQDQETA
 LSAMRNLNREFSGRALRVDNAASEKNKEELKSLGTGAPVIESPYGETISPEDAPESISKAVASLPPEQM
 FELMKQMKLCVQNSPQEARNMLLQNPQLAYALLQAQVVMRIVDPEIALKILHRQTNIPTLIAGNPQPVHG
 AGPGSGSNVSMNQNPQAPQAQSLGGMHVNGAPPLMQASMQGGVPAPGQMPAAVTGPGPSLAPGGGMQA
 QVGMPGSGPVSMEERGQVPMQDPRAAMQRGSLPANVPTPRGLLDGAPNDPRGGTLLSVTGEVEPRGYLGP
 HQGPPMHVPHGHSRGPPELHRRGPLPEPRPLMAEPRGPMLDQRPPLDGRGDRPRGIDARGMEARAM
 EARGLDARGLEARAMEARAMEARAMEARAMEARAMEVRGMEARGMDTRGPVPGPRGPIPSGMQGPSINM
 GAVVPQGSRQVPVMQGTGMQGASIQGGSQPGGSPGQNVTPQDHEKAALIMQVLQLTADQIAMLPEPQR
 QSILILKEIQKSTGAP

TRTRPLEQKLISEEDLAANDILDYKDDDDKV

Chromatograms:

https://cdn.origene.com/chromatograms/mk6138_b02.zip

Restriction Sites:

Sgfl-Mlul

Cloning Scheme:



ACCN: NM_001325

ORF Size: 1731 bp

OTI Disclaimer: The molecular sequence of this clone aligns with the gene accession number as a point of reference only. However, individual transcript sequences of the same gene can differ through naturally occurring variations (e.g. polymorphisms), each with its own valid existence. This clone is substantially in agreement with the reference, but a complete review of all prevailing variants is recommended prior to use. [More info](#)

OTI Annotation: This clone was engineered to express the complete ORF with an expression tag. Expression varies depending on the nature of the gene.

Components: The ORF clone is ion-exchange column purified and shipped in a 2D barcoded Matrix tube containing 10ug of transfection-ready, dried plasmid DNA (reconstitute with 100 ul of water).

- Reconstitution Method:
1. Centrifuge at 5,000xg for 5min.
 2. Carefully open the tube and add 100ul of sterile water to dissolve the DNA.
 3. Close the tube and incubate for 10 minutes at room temperature.
 4. Briefly vortex the tube and then do a quick spin (less than 5000xg) to concentrate the liquid at the bottom.
 5. Store the suspended plasmid at -20°C. The DNA is stable for at least one year from date of shipping when stored at -20°C.

RefSeq: [NM_001325.3](#)

RefSeq Size: 2027 bp

RefSeq ORF: 1734 bp

Locus ID: 1478

UniProt ID: [P33240](#)

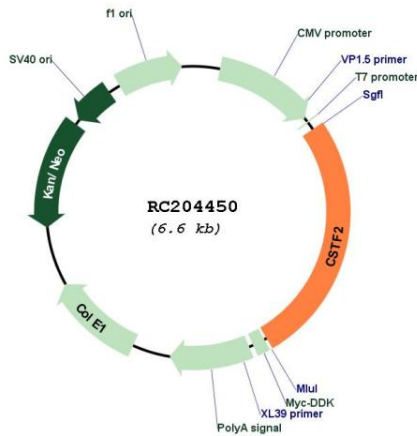
Cytogenetics: Xq22.1

Domains: RRM

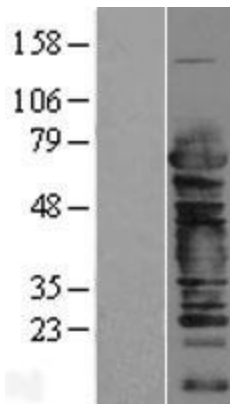
MW: 61 kDa

Gene Summary: This gene encodes a nuclear protein with an RRM (RNA recognition motif) domain. The protein is a member of the cleavage stimulation factor (CSTF) complex that is involved in the 3' end cleavage and polyadenylation of pre-mRNAs. Specifically, this protein binds GU-rich elements within the 3'-untranslated region of mRNAs. [provided by RefSeq, Jul 2008]

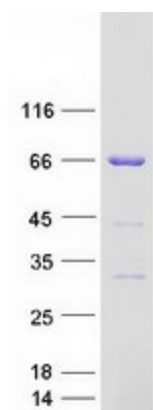
Product images:



Circular map for RC204450



Western blot validation of overexpression lysate (Cat# [LY400533]) using anti-DDK antibody (Cat# [TA50011-100]). Left: Cell lysates from untransfected HEK293T cells; Right: Cell lysates from HEK293T cells transfected with RC204450 using transfection reagent MegaTran 2.0 (Cat# [TT210002]).



Coomassie blue staining of purified CSTF2 protein (Cat# [TP304450]). The protein was produced from HEK293T cells transfected with CSTF2 cDNA clone (Cat# RC204450) using MegaTran 2.0 (Cat# [TT210002]).