

Product datasheet for **RC204446**

CD34 (NM_001025109) Human Tagged ORF Clone

Product data:

Product Type:	Expression Plasmids
Product Name:	CD34 (NM_001025109) Human Tagged ORF Clone
Tag:	Myc-DDK
Symbol:	CD34
Mammalian Cell Selection:	Neomycin
Vector:	pCMV6-Entry (PS100001)
E. coli Selection:	Kanamycin (25 ug/mL)
ORF Nucleotide Sequence:	>RC204446 ORF sequence Red=Cloning site Blue=ORF Green=Tags(s)

TTTTGTAATACGACTCACTATAGGGCGGCCGGGAATTCGTCGACTGGATCCGGTACCGAGGAGATCTGCC
GCC**CGATCGCC**

ATGCTGGTCCGCAGGGGCGCGCGCAGGGCCAGGATGCCGCGGGGCTGGACCGCGCTTTGCTTGCTGA
GTTTGCTGCCTTCTGGGTTTCATGAGTCTTGACAACAACGGTACTGCTACCCAGAGTTACCTACCCAGGG
AACATTTTCAAATGTTTCTACAAATGTATCCTACCAAGAACTACAACACCTAGTACCCTTGAAGTACC
AGCCTGCACCCCTGTGTCTCAACATGGCAATGAGGCCACAACAAACATCACAGAAACGACAGTCAAATTC
CATCTACCTCTGTGATAACCTCAGTTTATGAAACACAAACTCTTCTGTCCAGTCACAGACCTCTGTAAT
CAGCACAGTGTTACACCCCGCCAGCAACGTTTCAACTCCAGAGACAACCTTGAAGCCTAGCCTGTCACT
GGAAATGTTTCAGACCTTTCAACCACTAGCACTAGCCTTGCAACATCTCCCACTAAACCTATACATCAT
CTTCTCTATCCTAAGTGACATCAAGGCAGAAATCAAATGTTTCAGGCATCAGAGAAGTGAATTGACTCA
GGGCATCTGCCTGGAGCAAAATAAGACCTCCAGCTGTGCGGAGTTTAAGAAGGACAGGGGAGAGGGCCTG
GCCCGAGTGCTGTGTGGGAGGAGCAGGCTGATGCTGATGCTGGGGCCAGGTATGCTCCCTGCTCCTTG
CCCAGTCTGAGGTGAGGCCTCAGTGTCTACTGCTGGTCTTGCCAAACAGAACAGAAATTTCCAGCAAAT
CCAACCTATGAAAAGCACCAATCTGACCTGAAAAGCTGGGGATCCTAGATTTCACTGAGCAAGATGTT
GCAAGCCACCAGAGCTATTCCAAAAGACCCTGATTGCACTGGTACCTCGGGAGCCCTGCTGGCTGTCT
TGGGCATCACTGGCTATTTCTGATGAATCGCCGAGCTGGAGCCCACAGGAGAAAGGCTGGGCGAAGA
CCTTATTACACGAAAACGGTGGAGGCCAGGGCTATAGCTCAGGACCTGGGACCTCCCCTGAGGCTCAG
GGAAAGGCCAGTGTGAACCGAGGGGCTCAGGAAAACGGGACCGGCCAGGCCACCTCCAGAAACGGCCATT
CAGCAAGACAACAGTGGTGGCTGATACCGAATTG

ACGCGTACGCGGCCGCTCGAGCAGAAACTCATCTCAGAAGAGGATCTGGCAGCAAATGATATCCTGGATT
ACAAGGATGACGACGATAAGGTTTAA



[View online »](#)

Protein Sequence: >RC204446 protein sequence
Red=Cloning site Green=Tags(s)

MLVRRGARAGPRMPRGWTALCLLSLLPSGFMSLDNNGTATPELPTQGTFSNVSTNVSYQETTTTPSTLGST
 SLHPVSQLHGNEATTNITETTVKFTSTSVITSVYGNTNSSVQSQTSTVISTVFTTPANVSTPETTLKPSLSP
 GNVSDLSTTSTSLATSPKPYTSSPILSDIKAEIKCSGIREVKLTQGICLEQNKTS SCAEFKKDRGEGL
 ARVLCGEEQADADAGAQCSSLQAQSEVRPQCLLLVLANRTEISSKLQLMKKHQSDLKKLGLDFTEQDV
 ASHQSYSQKTLIALVTSGALLAVLGITGYFLMNRRSWSPTGERLGEDPYTENGGGQGYSSGPGTSPEAQ
 GKASVNRGAQENGTGQATSRNGHSARQHVVADTEL

TRTRPLEQKLISEEDLAANDILDYKDDDDKV

Chromatograms: https://cdn.origene.com/chromatograms/mk6522_b09.zip

Restriction Sites: SgfI-MluI

Cloning Scheme:

Cloning sites used for ORF Shuttling:



* The last codon before the Stop codon of the ORF

ACCN: NM_001025109

ORF Size: 1155 bp

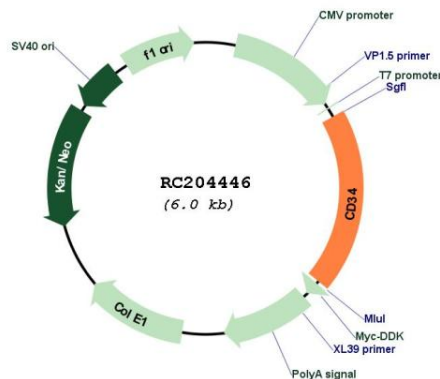
OTI Disclaimer: The molecular sequence of this clone aligns with the gene accession number as a point of reference only. However, individual transcript sequences of the same gene can differ through naturally occurring variations (e.g. polymorphisms), each with its own valid existence. This clone is substantially in agreement with the reference, but a complete review of all prevailing variants is recommended prior to use. [More info](#)

OTI Annotation: This clone was engineered to express the complete ORF with an expression tag. Expression varies depending on the nature of the gene.

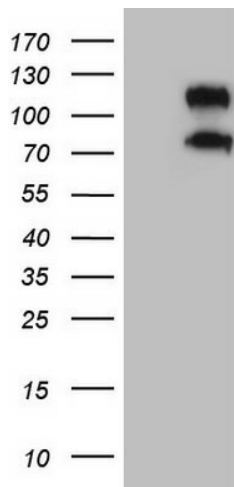
Components: The ORF clone is ion-exchange column purified and shipped in a 2D barcoded Matrix tube containing 10ug of transfection-ready, dried plasmid DNA (reconstitute with 100 ul of water).

Reconstitution Method:	<ol style="list-style-type: none">1. Centrifuge at 5,000xg for 5min.2. Carefully open the tube and add 100ul of sterile water to dissolve the DNA.3. Close the tube and incubate for 10 minutes at room temperature.4. Briefly vortex the tube and then do a quick spin (less than 5000xg) to concentrate the liquid at the bottom.5. Store the suspended plasmid at -20°C. The DNA is stable for at least one year from date of shipping when stored at -20°C.
Note:	Plasmids are not sterile. For experiments where strict sterility is required, filtration with 0.22um filter is required.
RefSeq:	NM_001025109.2
RefSeq Size:	2621 bp
RefSeq ORF:	1158 bp
Locus ID:	947
UniProt ID:	P28906
Cytogenetics:	1q32.2
Protein Families:	Adult stem cells, Cancer stem cells, Druggable Genome, Embryonic stem cells, ES Cell Differentiation/IPS, Transmembrane
Protein Pathways:	Cell adhesion molecules (CAMs), Hematopoietic cell lineage
MW:	40.7 kDa
Gene Summary:	The protein encoded by this gene may play a role in the attachment of stem cells to the bone marrow extracellular matrix or to stromal cells. This single-pass membrane protein is highly glycosylated and phosphorylated by protein kinase C. Two transcript variants encoding different isoforms have been found for this gene. [provided by RefSeq, Aug 2011]

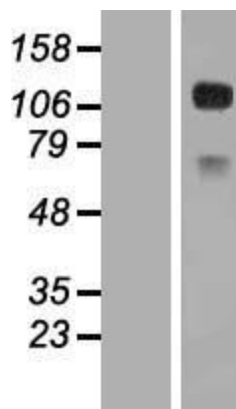
Product images:



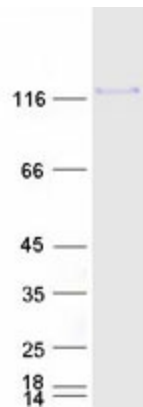
Circular map for RC204446



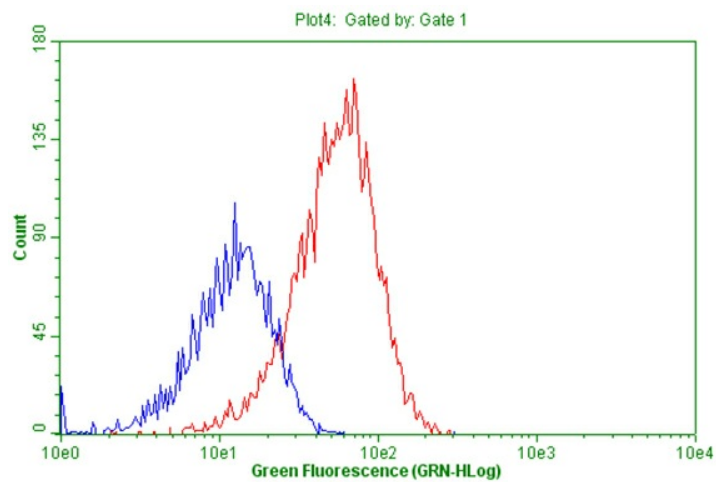
HEK293T cells were transfected with the pCMV6-ENTRY control (Cat# [PS100001], Left lane) or pCMV6-ENTRY CD34 (Cat# RC204446, Right lane) cDNA for 48 hrs and lysed. Equivalent amounts of cell lysates (5 ug per lane) were separated by SDS-PAGE and immunoblotted with anti-CD34 (Cat# [TA808885])(1:2000). Positive lysates [LY422593] (100ug) and [LC422593] (20ug) can be purchased separately from OriGene.



Western blot validation of overexpression lysate (Cat# [LY422593]) using anti-DDK antibody (Cat# [TA50011-100]). Left: Cell lysates from untransfected HEK293T cells; Right: Cell lysates from HEK293T cells transfected with RC204446 using transfection reagent MegaTran 2.0 (Cat# [TT210002]).



Coomassie blue staining of purified CD34 protein (Cat# [TP304446]). The protein was produced from HEK293T cells transfected with CD34 cDNA clone (Cat# RC204446) using MegaTran 2.0 (Cat# [TT210002]).



Living stable-transfected HEK293T cell line with RC204446 overexpress plasmid (Red) or HEK293T cells (Blue) were immunostained by anti-CD34 antibody ([TA804031]), and then analyzed by flow cytometry.