

Product datasheet for **RC204443**

CLK1 (NM_004071) Human Tagged ORF Clone

Product data:

Product Type:	Expression Plasmids
Product Name:	CLK1 (NM_004071) Human Tagged ORF Clone
Tag:	Myc-DDK
Symbol:	CLK1
Synonyms:	CLK; CLK/STY; STY
Mammalian Cell Selection:	Neomycin
Vector:	pCMV6-Entry (PS100001)
E. coli Selection:	Kanamycin (25 ug/mL)



[View online »](#)

ORF Nucleotide Sequence:

>RC204443 ORF sequence
 Red=Cloning site Blue=ORF Green=Tags(s)

TTTTGTAATACGACTCACTATAGGGCGGCCGGAATTCGTCGACTGGATCCGGTACCGAGGAGATCTGCC
 GCC**CGGATCGCC**

ATGAGACACTCAAAGAGAACTTACTGTCCTGATTGGGATGACAAGGATTGGGATTATGGAAAATGGAGGA
 GCAGCAGCAGTCATAAAAGAAGGAAGAGATCAGATAGCAGTGCCAGGAGAAACAAGCCTGCAAATACAA
 TCACTCTAAAATGTGTAGTACGATTATTTGGAAAGCAGGTCTATAAATGAGAAAGATTATCATAGTCGA
 CGCTACATTGATGAGTACAGAAATGACTACACTCAAGGATGTGAACCTGGACATCGCCAAAGAGACCATG
 AAAGCCGGTATCAGAACCATAGTAGCAAGTCTTCTGGTAGAAGTGAAGAAGTAGTTATAAAAGCAAACA
 CAGGATTCACCACAGTACTTCACATCGTCGTTACATGGGAAGAGTACCAGGAGGAAAAGAACAGGAGT
 GTAGAGGATGATGAGGAGGTCACCTGATCTGTCAGAGTGGAGACGTAAGTGAAGATATGAAATTG
 TTGATACTTTAGGTGAAGGAGCTTTTGGAAAAGTTGGGAGTGCATCGATCATAAAGCCGGGAGGTAGACA
 TGTAGCAGTAAAAATAGTTAAAAATGTGGATAGATACTGTGAAGCTGCTCGCTCAGAAATACAAGTTCTG
 GAACATCTGAATACAACAGACCCCAACAGTACTTCCCGTGTGTCCAGATGTTGGAATGGTTTGAGCATC
 ATGGTTCACATTTGCATTGTTTTGAACTATTGGGACTTAGTACTTACGACTTCATTAAGAAAATGGTTT
 TCTACCATTTGACTGGATCATATCAGAAAAGTGGCATATCAGATATGCAAGTCTGTGAATTTTTGCAC
 AGTAATAAGTTGACTCACACAGACTTAAAGCCTGAAAACATCTTATTTGTGCAGTCTGACTACACAGAGG
 CGTATAATCCCAAAAATAAACGTGATGAACGCACCTTAATAAATCCAGATATTAAGTTGTAGACTTTGG
 TAGTGCAACATATGATGACGAACATCACAGTACATTGGTATCTACAAGACATTATAGAGCACCTGAAGTT
 ATTTTAGCCCTAGGGTGGTCCCAACCATGTGATGTCTGGAGCATAGGATGCATCTTATTGAATACTATC
 TTGGGTTTACCGTATTTCCAACACACGATAGTAAGGAGCATTAGCAATGATGGAAGGATCTTTGGACC
 TCTACCAAAACATATGATACAGAAAACCAGGAAACGTAATAATTTTACCACGATCGATTAGACTGGGAT
 GAACACAGTTCTGCCGGCAGATATGTTTCAAGACGCTGTAACCTCTGAAGGAATTTATGCTTTCTCAAG
 ATGTTGAACATGAGCGTCTCTTTGACCTCATTAGAAAATGTTGGAGTATGATCCAGCCAAAAGAATTAC
 TCTCAGAGAAGCCTTAAAGCATCCTTTCTTTGACCTTCTGAAGAAAAGTATA

ACGCGTACGCGGCCGCTCGAGCAGAAACTCATCTCAGAAGAGGATCTGGCAGCAAATGATATCCTGGATT
 ACAAGGATGACGACGATAAGGTTTAA

Protein Sequence:

>RC204443 protein sequence
 Red=Cloning site Green=Tags(s)

MRHSKRTYCPDWDKDWYDGKWRSSSSHKRRKRSHSSAQENKRCKYNHSMCDSHYLESRSINEKDYHSR
 RYIDEYRNDYTQCEPGRHRDHESTRYQNHSSKSSGRSGRSSYKSKHRIHHSTSHRRSHGKSHRRKRTRS
 VEDDEEHLICQSGDVL SARYEIVDTLGEFAGKVVVCEIDHKAGGRHVAVKIVKNVDRYCEARSEIQVL
 EHLNNTDPNSTFRVQMLEWFEHHGHICIVFELLGLSTYDFIKENGFLPFRLDHIRKMAYQICKSVNFLH
 SNKLTHDLKPENILFVQSDYTEAYNPKIKRDERTLINPDIKVDFGSATYDDEHHSTLVSTRHYRAPEV
 ILALGWSQPCDVWSIGCILIEYYLGFVFPVTHDSKEHLAMMERILGPLPKHMIQKTRKRKYFHHDRLDWD
 EHSSAGRYVSRCKPLKEFMLSQDVEHERLFDLIQKMLEYDPAKRITLREALKHPFFDLLKKSII

TRTRPLEQKLISEEDLAANDILDYKDDDDKV

Chromatograms:

https://cdn.origene.com/chromatograms/mk6245_f11.zip

Restriction Sites:

Sgfl-Mlul

Cloning Scheme:

Cloning sites used for ORF Shutting:



* The last codon before the Stop codon of the ORF

ACCN: NM_004071

ORF Size: 1452 bp

OTI Disclaimer: The molecular sequence of this clone aligns with the gene accession number as a point of reference only. However, individual transcript sequences of the same gene can differ through naturally occurring variations (e.g. polymorphisms), each with its own valid existence. This clone is substantially in agreement with the reference, but a complete review of all prevailing variants is recommended prior to use. [More info](#)

OTI Annotation: This clone was engineered to express the complete ORF with an expression tag. Expression varies depending on the nature of the gene.

Components: The ORF clone is ion-exchange column purified and shipped in a 2D barcoded Matrix tube containing 10ug of transfection-ready, dried plasmid DNA (reconstitute with 100 ul of water).

Reconstitution Method:

1. Centrifuge at 5,000xg for 5min.
2. Carefully open the tube and add 100ul of sterile water to dissolve the DNA.
3. Close the tube and incubate for 10 minutes at room temperature.
4. Briefly vortex the tube and then do a quick spin (less than 5000xg) to concentrate the liquid at the bottom.
5. Store the suspended plasmid at -20°C. The DNA is stable for at least one year from date of shipping when stored at -20°C.

RefSeq: [NM_004071.4](#)
RefSeq Size: 1933 bp

RefSeq ORF: 1455 bp

Locus ID: 1195

UniProt ID: [P49759](#)
Cytogenetics: 2q33.1

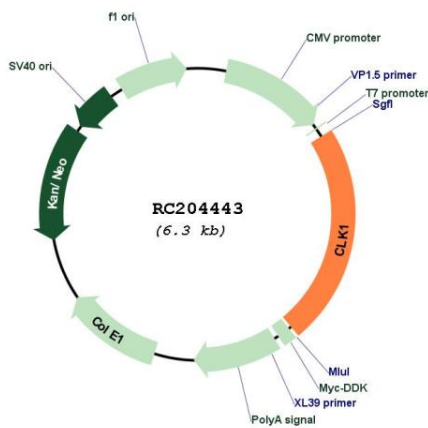
Domains: pkinase, TyrKc, S_TKc

Protein Families: Druggable Genome, Protein Kinase

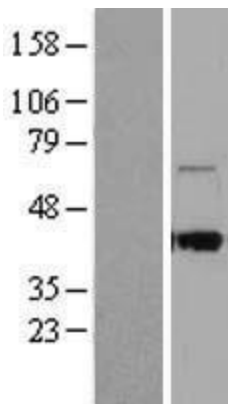
MW: 57.3 kDa

Gene Summary: This gene encodes a member of the CDC2-like (or LAMMER) family of dual specificity protein kinases. In the nucleus, the encoded protein phosphorylates serine/arginine-rich proteins involved in pre-mRNA processing, releasing them into the nucleoplasm. The choice of splice sites during pre-mRNA processing may be regulated by the concentration of transacting factors, including serine/arginine rich proteins. Therefore, the encoded protein may play an indirect role in governing splice site selection. Multiple transcript variants encoding different isoforms have been found for this gene. [provided by RefSeq, Jun 2009]

Product images:



Circular map for RC204443



Western blot validation of overexpression lysate (Cat# [LY418237]) using anti-DDK antibody (Cat# [TA50011-100]). Left: Cell lysates from untransfected HEK293T cells; Right: Cell lysates from HEK293T cells transfected with RC204443 using transfection reagent MegaTran 2.0 (Cat# [TT210002]).