

Product datasheet for **RC204427**

NNT1 (CLCF1) (NM_013246) Human Tagged ORF Clone

Product data:

Product Type:	Expression Plasmids
Product Name:	NNT1 (CLCF1) (NM_013246) Human Tagged ORF Clone
Tag:	Myc-DDK
Symbol:	NNT1
Synonyms:	BSF-3; BSF3; CISS2; CLC; NNT-1; NNT1; NR6
Mammalian Cell Selection:	Neomycin
Vector:	pCMV6-Entry (PS100001)
E. coli Selection:	Kanamycin (25 ug/mL)
ORF Nucleotide Sequence:	>RC204427 ORF sequence Red=Cloning site Blue=ORF Green=Tags(s)

TTTTGTAATACGACTCACTATAGGGCGCCGGAATTCGTCGACTGGATCCGGTACCGAGGAGATCTGCC
GCC**CGATCGCC**

ATGGACCTCCGAGCAGGGGACTCGTGGGGATGTTAGCGTGCCTGTGCACGGTGTCTGGCACCTCCCTG
CAGTGCCAGCTCTCAATCGCACAGGGGACCCAGGGCTGGCCCTCCATCCAGAAAACCTATGACCTCAC
CCGCTACCTGGAGCACCACCTCCGAGCTTGGCTGGGACCTATCTGAACTACCTGGGCCCCCTTTCAAC
GAGCCAGACTTCAACCTCCCCGCTGGGGCAGAGACTCTGCCAGGGCCACTGTTGACTTGGAGGTGT
GGCGAAGCCTCAATGACAACTGCGGCTGACCCAGAAGTACGAGGCCTACAGCCACCTTCTGTGTTACTT
GGTGGCCTCAACCGTCAGGCTGCCACTGCTGAGCTGCGCCGAGCCTGGCCACTTCTGCACCAGCCTC
CAGGGCCTGCTGGCAGCATTGCGGGCGTCATGGCAGCTCTGGGCTACCCACTGCCCCAGCCGCTGCCTG
GGACTGAACCACTTGGACTCCTGGCCCTGCCACAGTGACTTCTCCAGAAGATGGACGACTTCTGGCT
GCTGAAGGAGCTGCAGACCTGGCTGTGGCGCTCGGCCAAGGACTTCAACCGGCTCAAGAAGAAGATGCAG
CCTCCAGCAGCTGCAGTCACCCTGCACCTGGGGGCTCATGGCTTC

ACGCGTACGCGGGCCGCTCGAGCAGAAACTCATCTCAGAAGAGGATCTGGCAGCAAATGATATCCTGGATT
ACAAGGATGACGACGATAAGGTTTAA



[View online »](#)

Protein Sequence: >RC204427 protein sequence
Red=Cloning site Green=Tags(s)

MDLRAGDSWGLACLCTVLWHLPAVPALNRTGDPGPGPSIQKTYDLTRYLEHQLRSLAGTYLNYLGPPFN
 EPDFNPPRLGAETLPRATVDLEVWRSNDKLRLTQNYEAYSHLLCYLRGLNRQAATAELRRSLAHFCTSL
 QGLLGSIAGVMAALGYPLPQPLPGTEPTWTPGPAHSDFLQKMDDFWLLKELQTWLWRSKDFNRLKKKMQ
 PPAAAVTLHLGAHGF

TRTRPLEQKLISEEDLAANDILDYKDDDDKV

Chromatograms: https://cdn.origene.com/chromatograms/mk6025_h03.zip

Restriction Sites: SgfI-MluI

Cloning Scheme:

Cloning sites used for ORF Shuttling:



ACCN: NM_013246

ORF Size: 675 bp

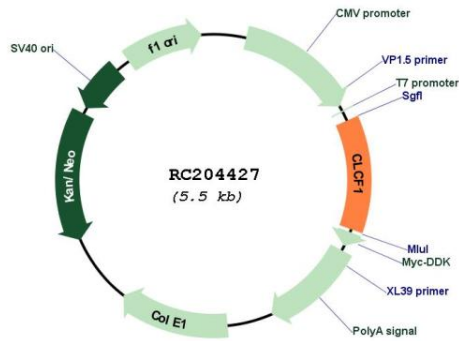
OTI Disclaimer: The molecular sequence of this clone aligns with the gene accession number as a point of reference only. However, individual transcript sequences of the same gene can differ through naturally occurring variations (e.g. polymorphisms), each with its own valid existence. This clone is substantially in agreement with the reference, but a complete review of all prevailing variants is recommended prior to use. [More info](#)

OTI Annotation: This clone was engineered to express the complete ORF with an expression tag. Expression varies depending on the nature of the gene.

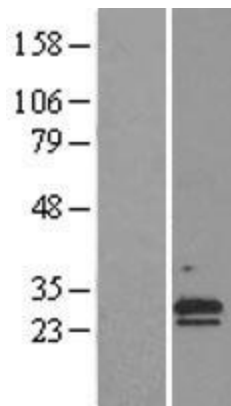
Components: The ORF clone is ion-exchange column purified and shipped in a 2D barcoded Matrix tube containing 10ug of transfection-ready, dried plasmid DNA (reconstitute with 100 ul of water).

Reconstitution Method:	<ol style="list-style-type: none">1. Centrifuge at 5,000xg for 5min.2. Carefully open the tube and add 100ul of sterile water to dissolve the DNA.3. Close the tube and incubate for 10 minutes at room temperature.4. Briefly vortex the tube and then do a quick spin (less than 5000xg) to concentrate the liquid at the bottom.5. Store the suspended plasmid at -20°C. The DNA is stable for at least one year from date of shipping when stored at -20°C.
RefSeq:	NM_013246.3
RefSeq Size:	1860 bp
RefSeq ORF:	678 bp
Locus ID:	23529
UniProt ID:	Q9UBD9
Cytogenetics:	11q13.2
Protein Families:	Druggable Genome, Secreted Protein
Protein Pathways:	Cytokine-cytokine receptor interaction, Jak-STAT signaling pathway
MW:	25.2 kDa
Gene Summary:	<p>This gene is a member of the glycoprotein (gp)130 cytokine family and encodes cardiotrophin-like cytokine factor 1 (CLCF1). CLCF1 forms a heterodimer complex with cytokine receptor-like factor 1 (CRLF1). This dimer competes with ciliary neurotrophic factor (CNTF) for binding to the ciliary neurotrophic factor receptor (CNTFR) complex, and activates the Jak-STAT signaling cascade. CLCF1 can be actively secreted from cells by forming a complex with soluble type I CRLF1 or soluble CNTFR. CLCF1 is a potent neurotrophic factor, B-cell stimulatory agent and neuroendocrine modulator of pituitary corticotroph function. Defects in CLCF1 cause cold-induced sweating syndrome 2 (CISS2). This syndrome is characterized by a profuse sweating after exposure to cold as well as congenital physical abnormalities of the head and spine. Alternative splicing results in multiple transcript variants encoding distinct isoforms.[provided by RefSeq, Oct 2009]</p>

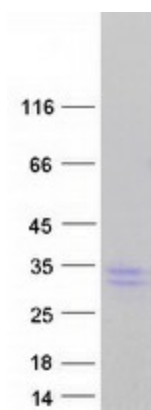
Product images:



Circular map for RC204427



Western blot validation of overexpression lysate (Cat# [LY402229]) using anti-DDK antibody (Cat# [TA50011-100]). Left: Cell lysates from untransfected HEK293T cells; Right: Cell lysates from HEK293T cells transfected with RC204427 using transfection reagent MegaTran 2.0 (Cat# [TT210002]).



Coomassie blue staining of purified CLCF1 protein (Cat# [TP304427]). The protein was produced from HEK293T cells transfected with CLCF1 cDNA clone (Cat# RC204427) using MegaTran 2.0 (Cat# [TT210002]).