

Product datasheet for **RC204420**

CHIC2 (NM_012110) Human Tagged ORF Clone

Product data:

Product Type: Expression Plasmids
Product Name: CHIC2 (NM_012110) Human Tagged ORF Clone
Tag: Myc-DDK
Symbol: CHIC2
Synonyms: BTL
Mammalian Cell Selection: Neomycin
Vector: pCMV6-Entry (PS100001)
E. coli Selection: Kanamycin (25 ug/mL)
ORF Nucleotide Sequence: >RC204420 ORF sequence
Red=Cloning site Blue=ORF Green=Tags(s)

TTTTGTAATACGACTCACTATAGGGCGCCGGGAATTCGTCGACTGGATCCGGTACCGAGGAGATCTGCC
GCC**CGATCGCC**

ATGGCGGATTTTCGACGAAATCTATGAGGAAGAGGAGGACGAGGAGCGGGCCCTGGAGGAGCAGCTGCTCA
AGTACTCGCCGGACCCGGTGGTCGTCGCGGCTCCGGTACGTCACCGTATTTGGACTGAGCAACAATT
TGAATCTGAATCCCTTCTTCATTAAGTAAAGTAGCTCCTGAAGAATTTAAAGCCAGCATCAACAGA
GTTAACAGTTGTCTTAAGAAGAACCTTCTGTTAATGTACGTTGGCTACTTTGTGGCTGCCTTTGTGCT
GCTGCACATTAGTTGCAGTATGTGGCCAGTTATTTGCCTCAGTAAAAGAACACGAAGATCGATTGAGAA
GTTATTAGAATGGAAAACAATAGGTTATACCACAAGCTGTGCTTGCATTGGAGACTGAGCAAAAGGAAA
TGTGAAACGAATAACATGATGGAATATGTCATCCTCATAGAATTTTACCAAAGACCCGATTTTTCGAC
CAGAT

ACGCGTACGCGGCCGCTCGAGCAGAACTCATCTCAGAAGAGGATCTGGCAGCAAATGATATCCTGGATT
ACAAGGATGACGACGATAAGGTTTAA

Protein Sequence: >RC204420 protein sequence
Red=Cloning site Green=Tags(s)

MADFDEIYEEEEDEERALEEQLLKYSPPVVRGSGHVTVFGLSNKFESEFPSSLTGKVAPEEFKASINR
VNSCLKKNL PVNVRWLLCGCLCCCTLGCSMWPVICLSKRTRRSIEKLLLEWENRLYHKLCLHWRLSKRK
CETNNMMEYVILIEFLPKTPIFRPD

TRTRPLEQKLISEEDLAANDILDYKDDDDKV

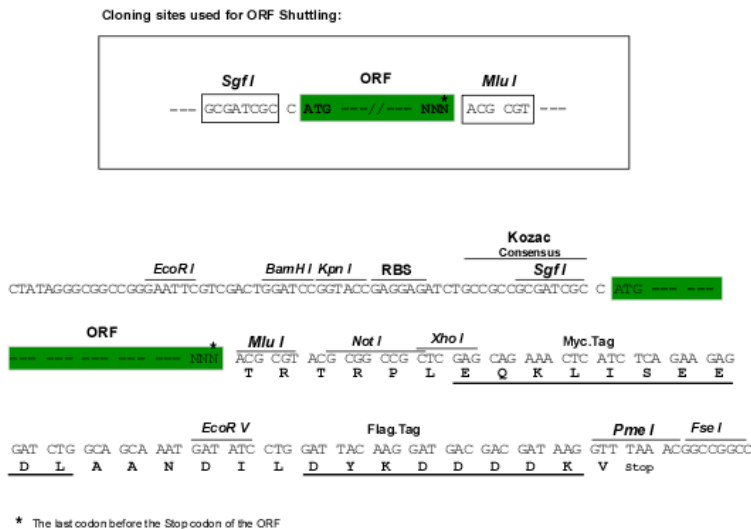
Chromatograms: https://cdn.origene.com/chromatograms/mk6325_d02.zip



[View online »](#)

Restriction Sites: SgfI-MluI

Cloning Scheme:



ACCN: NM_012110

ORF Size: 495 bp

OTI Disclaimer: The molecular sequence of this clone aligns with the gene accession number as a point of reference only. However, individual transcript sequences of the same gene can differ through naturally occurring variations (e.g. polymorphisms), each with its own valid existence. This clone is substantially in agreement with the reference, but a complete review of all prevailing variants is recommended prior to use. [More info](#)

OTI Annotation: This clone was engineered to express the complete ORF with an expression tag. Expression varies depending on the nature of the gene.

Components: The ORF clone is ion-exchange column purified and shipped in a 2D barcoded Matrix tube containing 10ug of transfection-ready, dried plasmid DNA (reconstitute with 100 ul of water).

Reconstitution Method:

1. Centrifuge at 5,000xg for 5min.
2. Carefully open the tube and add 100ul of sterile water to dissolve the DNA.
3. Close the tube and incubate for 10 minutes at room temperature.
4. Briefly vortex the tube and then do a quick spin (less than 5000xg) to concentrate the liquid at the bottom.
5. Store the suspended plasmid at -20°C. The DNA is stable for at least one year from date of shipping when stored at -20°C.

RefSeq: [NM_012110.4](#)

RefSeq Size: 1178 bp

RefSeq ORF: 498 bp

Locus ID: 26511

UniProt ID: [Q9UKJ5](#)

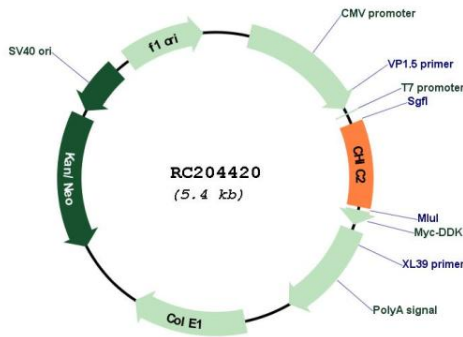
Cytogenetics: 4q12

Protein Families: Druggable Genome, Transmembrane

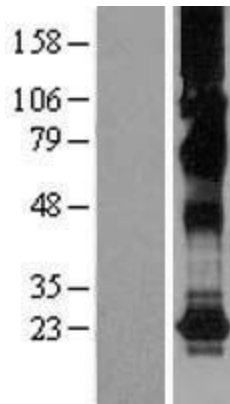
MW: 19.3 kDa

Gene Summary: This gene encodes a member of the CHIC family of proteins. The encoded protein contains a cysteine-rich hydrophobic (CHIC) motif, and is localized to vesicular structures and the plasma membrane. This gene is associated with some cases of acute myeloid leukemia. [provided by RefSeq, Jul 2008]

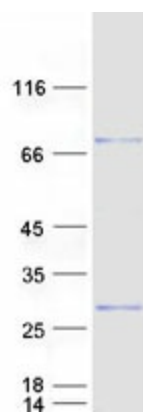
Product images:



Circular map for RC204420



Western blot validation of overexpression lysate (Cat# [LY415979]) using anti-DDK antibody (Cat# [TA50011-100]). Left: Cell lysates from untransfected HEK293T cells; Right: Cell lysates from HEK293T cells transfected with RC204420 using transfection reagent MegaTran 2.0 (Cat# [TT210002]).



Coomassie blue staining of purified CHIC2 protein (Cat# [TP304420]). The protein was produced from HEK293T cells transfected with CHIC2 cDNA clone (Cat# RC204420) using MegaTran 2.0 (Cat# [TT210002]).