

## Product datasheet for **RC204419**

### HDHD1A (PUDP) (NM\_012080) Human Tagged ORF Clone

#### Product data:

Product Type:	Expression Plasmids
Product Name:	HDHD1A (PUDP) (NM_012080) Human Tagged ORF Clone
Tag:	Myc-DDK
Symbol:	HDHD1A
Synonyms:	DXF68S1E; FAM16AX; GS1; HDHD1; HDHD1A
Mammalian Cell Selection:	Neomycin
Vector:	pCMV6-Entry (PS100001)
E. coli Selection:	Kanamycin (25 ug/mL)
ORF Nucleotide Sequence:	>RC204419 ORF sequence Red=Cloning site Blue=ORF Green=Tags(s)

TTTTGTAATACGACTCACTATAGGGCGGCCGGAATTCGTCGACTGGATCCGGTACCGAGGAGATCTGCC  
GCC**CGATCGCC**

ATGGACGGACTTCTTCTGGATACTGAACGGCTGTATTCAGTGGTGTTC AAGAAATATGTAATCGCTATG  
ACAAGAAATACAGCTGGGATGTAAGTCCCTGGTTATGGGTAAGAAGGCATTAGAGGCGGCACAGATTAT  
AATAGACGTCTTGCAGCTCCCGATGTCCAAGAGGAGCTGGTGAAGAAAGCCAAACGAAGTTAAAGGAA  
GTGTTCCCGACGGCTGCGCTCATGCCAGGGCGGAGAACTCATCATCCACCTGCGGAAACATGGCATCC  
CCTTTGCACTGGCCACCAGCTCGAGGTCGCGTCTCGATATGAAGACAAGCCGCCACAAGGAGTTCTT  
CAGCTTGTTCACATTTGTGCTGGGAGATGACCCGAAGTGCAGCATGGCAAGCCAGACCCAGACATC  
TTCTAGCTTGTGCCAAGAGGTTCTCTCCCTCCTGCTATGGAGAAGTGCCCTTGTCTTTGAAGATGCTC  
CCAATGGGGTGGAGGCGGCCCTGGCAGCTGGGATGCAGGTGGTCAATGGTTCCTGACGAAACTTGAGCCG  
AGATCTGACAACAAGGCCACCCTGGTGTGAATTCCTCGAGGACTCCAGCCGAGCTGTTTGGTTTG  
CCCTCCTATGAG

**ACGCGT**ACGCGGCGCTCGAGCAGAACTCATCTCAGAAGAGGATCTGGCAGCAAATGATATCCTGGATT  
ACAAGGATGACGACGATAAGGTTTAA



[View online »](#)

**Protein Sequence:** >RC204419 protein sequence  
 Red=Cloning site Green=Tags(s)

MDGLLLDTERLYSVVFQEICNRYDKKYSWDVKSLVMGKKALEAAQIIIDVLQLPMSKEELVEESQTKLKE  
 VFPTAALMPGAELIIHLRKHGIPFALATSSRSASFDMKTSRHKEFFSLFSHIVLGDDPEVQHKGKPPDI  
 FLACAKRFSPPPAMEKCLVFEDAPNGVEAALAAGMQVVMVDPGNLSRDLTTKATLVLNSLQDFQPELFG  
 PSYE

TRTRPLEQKLISEEDLAANDILDYKDDDDKV

**Chromatograms:** [https://cdn.origene.com/chromatograms/mk6311\\_g09.zip](https://cdn.origene.com/chromatograms/mk6311_g09.zip)

**Restriction Sites:** SgfI-MluI

**Cloning Scheme:**



**ACCN:** NM\_012080

**ORF Size:** 642 bp

**OTI Disclaimer:** The molecular sequence of this clone aligns with the gene accession number as a point of reference only. However, individual transcript sequences of the same gene can differ through naturally occurring variations (e.g. polymorphisms), each with its own valid existence. This clone is substantially in agreement with the reference, but a complete review of all prevailing variants is recommended prior to use. [More info](#)

**OTI Annotation:** This clone was engineered to express the complete ORF with an expression tag. Expression varies depending on the nature of the gene.

**Components:** The ORF clone is ion-exchange column purified and shipped in a 2D barcoded Matrix tube containing 10ug of transfection-ready, dried plasmid DNA (reconstitute with 100 ul of water).

**Reconstitution Method:**

1. Centrifuge at 5,000xg for 5min.
2. Carefully open the tube and add 100ul of sterile water to dissolve the DNA.
3. Close the tube and incubate for 10 minutes at room temperature.
4. Briefly vortex the tube and then do a quick spin (less than 5000xg) to concentrate the liquid at the bottom.
5. Store the suspended plasmid at -20°C. The DNA is stable for at least one year from date of shipping when stored at -20°C.

**RefSeq:** [NM\\_012080.5](#)

**RefSeq Size:** 2155 bp

**RefSeq ORF:** 687 bp

**Locus ID:** 8226

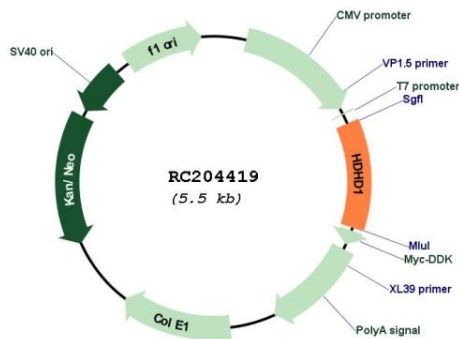
**UniProt ID:** [Q08623](#)

**Cytogenetics:** Xp22.31

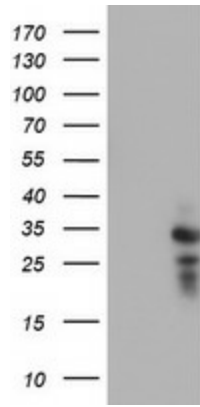
**MW:** 23.8 kDa

**Gene Summary:** This gene encodes a member of the haloacid dehalogenase-like (HAD) hydrolase superfamily. The encoded protein has no known biological function. This gene has a pseudogene on chromosome 1. Multiple alternatively spliced transcript variants encoding different isoforms have been identified. [provided by RefSeq, Jul 2010]

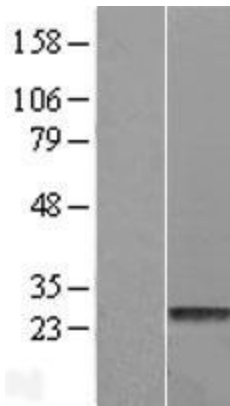
### Product images:



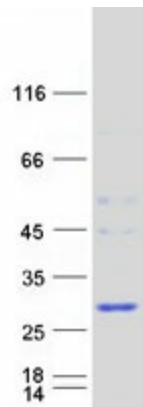
Circular map for RC204419



HEK293T cells were transfected with the pCMV6-ENTRY control (Cat# [PS100001], Left lane) or pCMV6-ENTRY HDHD1 (Cat# RC204419, Right lane) cDNA for 48 hrs and lysed. Equivalent amounts of cell lysates (5 ug per lane) were separated by SDS-PAGE and immunoblotted with anti-HDHD1 (Cat# [TA502555]). Positive lysates [LY415984] (100ug) and [LC415984] (20ug) can be purchased separately from OriGene.



Western blot validation of overexpression lysate (Cat# [LY415984]) using anti-DDK antibody (Cat# [TA50011-100]). Left: Cell lysates from untransfected HEK293T cells; Right: Cell lysates from HEK293T cells transfected with RC204419 using transfection reagent MegaTran 2.0 (Cat# [TT210002]).



Coomassie blue staining of purified PUDP protein (Cat# [TP304419]). The protein was produced from HEK293T cells transfected with PUDP cDNA clone (Cat# RC204419) using MegaTran 2.0 (Cat# [TT210002]).