

## Product datasheet for **RC204416**

### SGK3 (NM\_013257) Human Tagged ORF Clone

#### Product data:

Product Type:	Expression Plasmids
Product Name:	SGK3 (NM_013257) Human Tagged ORF Clone
Tag:	Myc-DDK
Symbol:	SGK3
Synonyms:	CISK; SGK2; SGKL
Mammalian Cell Selection:	Neomycin
Vector:	pCMV6-Entry (PS100001)
E. coli Selection:	Kanamycin (25 ug/mL)



[View online »](#)

**ORF Nucleotide Sequence:**

>RC204416 ORF sequence  
 Red=Cloning site Blue=ORF Green=Tags(s)

TTTTGTAATACGACTCACTATAGGGCGGCCGGAATTCGTCGACTGGATCCGGTACCGAGGAGATCTGCC  
 GCC**CGCATCGCC**

ATGCAAAGAGATCACACCATGGACTACAAGGAAAGCTGCCAAGTGAAGCATTCCAGCTCCGATGAAC  
 ACAGAGAGAAAAAGAAGAGGTTTACTGTTTATAAAGTTCTGGTTTCAGTGGGAAGAAGTGAATGGTTTGT  
 CTTCAGGAGATATGCAGAGTTTGATAAACTTTATAACACTTTAAAAAACAGTTTCTGCTATGGCCCTG  
 AAGATTCTGCCAAGAGAATATTTGGTGATAATTTGATCCAGATTTTATAAACAAAGACGAGCAGGAC  
 TAAACGAATTCATTGAGAACCTAGTTAGGTATCCAGAATTTATAACCATCCAGATGTCAGAGCATTCTT  
 TCAAATGGACAGTCCAAAACACCAGTCAGATCCATCTGAAGATGAGGATGAAAGAAGTTCTCAGAAGCTA  
 CACTCTACCTCACAGAACATCAACCTGGGACCGTCTGAAATCCTCATGCCAAACCAACTGACTTTGATT  
 TCTTAAAAGTTATTGGAAAAGGCAGCTTTGGCAAGTTCTTCTTGCAAAACGAAACTGGATGGAAAATT  
 TTATGCTGTCAAAGTGTACAGAAAAAATAGTTCTCAACAGAAAAGAGCAAAAACATATTATGGCTGAA  
 CGTAATGTGCTCTTGAAAATGTGAAACATCCGTTTTTGGTTGGATTGCATTATTCCTTCCAAACAACCTG  
 AAAAGCTTTATTTGTTCTGGATTTTGTAAATGGAGGGGAGCTTTTTTCCACTTACAAAGAGAACGGTC  
 CTTTCTGAGCACAGAGCTAGGTTTTACGCTGCTGAAATTGCTAGTGCATTGGGTTACTTACATTCCATC  
 AAAATAGTATACAGAGACTTGAAACCAGAAAATATTCTTTGGATTGAGTGGACATGTTGTCTTAACAG  
 ATTTTGGGCTTTGTAAAGAAGGAATTGCTATTTCTGACACCACTACCACATTTTGGGGACACCAGAGTA  
 TCTTGCACCTGAAGTAATTAGAAAACAGCCCTATGACAATACTGTAGATTGGTGGTGCCTTGGGGCTGTT  
 CTGTATGAAATGCTGTATGGATTGCCTCTTTTATTGCCGAGATGTTGCTGAAATGTATGACAATCC  
 TTCACAAAACCCCTAAGTTTGAGGCCAGGAGTGAGTCTTACAGCCTGGTCCATTCTGGAAGAACTCTAGA  
 AAAAGACAGGCAAAATCGACTTGGTGCCAAGGAAGACTTTCTTGAAATTCAGAATCATCCTTTTTTTGAA  
 TCACTCAGCTGGGCTGACCTGTACAAAAGAAATTCCACCACCTTTAATCCTAATGTGGCTGGACCAG  
 ATGATATCAGAACTTTGACACAGCATTACAGAAGAAACAGTTCATATTCTGTGTGTATCTTCTGA  
 CTATTCTATAGTGAATGCCAGTGTATTGGAGGCAGATGATGCATTCGTTGGTTTCTCTTATGCACCTCT  
 TCAGAAGACTTATTTTG

**ACGCGT**ACGCGGCCGCTCGAGCAGAAACTCATCTCAGAAGAGGATCTGGCAGCAATGATATCCTGGATT  
 ACAAGGATGACGACGATAAGGTTTAA

**Protein Sequence:**

>RC204416 protein sequence  
 Red=Cloning site Green=Tags(s)

MQRDHTMDYKESCPVSVIPSSDEHREKKRFTVYKVLVSVGRSEWVFRRYAEFDKLYNTLKKQFPAMAL  
 KIPAKRIFGDNFDPDFIKQRRAGLNEFIQNLVRYPELYNHPDVRAFLQMDSPKHQSDPSEDEDERSQKL  
 HSTSQNINLGPSONPHAKPTDFDLKVIKGSFGKVLAKRKLKGKLYAVKVLQKKIVLNRKEQKHIMAE  
 RNVLLKNVKNPFLVGLHYSFQTTEKLYFVLDVNGGELFFHLQRERSFPEHRARFYAAEIASALGYLHSI  
 KIVYRDLKPENILLDSVGHVVLDFGLCKEGIAISDTTTFCTGPEYLAPEVIRKQPYDNTVDWVWCLGAV  
 LYEMLYGLPPFYCRDVAEMYDNILHKPLSLRPGVSLTAWSI EELLEKDRQNLGAKEDFLEIQNHPPFE  
 SLSWADLVQKKIPPPFNPVAGPDDIRNFDTAFTEETVPYSVCVSSDYSIVNASVLEADDAFVGFYSYAPP  
 SEDLFL

**TRTRPLEQKLI**SEEDLAANDILDYKDDDDKV

**Chromatograms:**

[https://cdn.origene.com/chromatograms/mk6215\\_e11.zip](https://cdn.origene.com/chromatograms/mk6215_e11.zip)

**Restriction Sites:**

Sgfl-Mlul

**Cloning Scheme:**


**ACCN:** NM\_013257

**ORF Size:** 1488 bp

**OTI Disclaimer:** The molecular sequence of this clone aligns with the gene accession number as a point of reference only. However, individual transcript sequences of the same gene can differ through naturally occurring variations (e.g. polymorphisms), each with its own valid existence. This clone is substantially in agreement with the reference, but a complete review of all prevailing variants is recommended prior to use. [More info](#)

**OTI Annotation:** This clone was engineered to express the complete ORF with an expression tag. Expression varies depending on the nature of the gene.

**Components:** The ORF clone is ion-exchange column purified and shipped in a 2D barcoded Matrix tube containing 10ug of transfection-ready, dried plasmid DNA (reconstitute with 100 ul of water).

- Reconstitution Method:**
1. Centrifuge at 5,000xg for 5min.
  2. Carefully open the tube and add 100ul of sterile water to dissolve the DNA.
  3. Close the tube and incubate for 10 minutes at room temperature.
  4. Briefly vortex the tube and then do a quick spin (less than 5000xg) to concentrate the liquid at the bottom.
  5. Store the suspended plasmid at -20°C. The DNA is stable for at least one year from date of shipping when stored at -20°C.

**RefSeq:** [NM\\_013257.4](#)

**RefSeq Size:** 4206 bp

**RefSeq ORF:** 1491 bp

**Locus ID:** 23678

**UniProt ID:** [Q96BR1](#)

**Cytogenetics:** 8q13.1

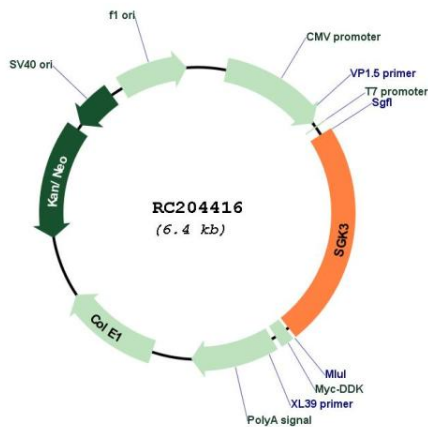
**Domains:** pkinase, S\_TK\_X, TyrKc, PX, S\_TKc

**Protein Families:** Druggable Genome, Protein Kinase

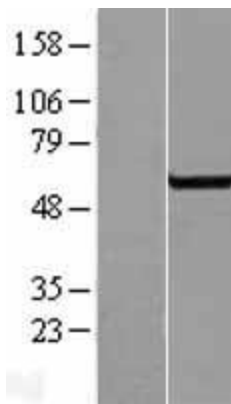
**MW:** 57.1 kDa

**Gene Summary:** This gene is a member of the Ser/Thr protein kinase family and encodes a phosphoprotein with a PX (phox homology) domain. The protein phosphorylates several target proteins and has a role in neutral amino acid transport and activation of potassium and chloride channels. Alternate transcriptional splice variants, encoding different isoforms, have been characterized. [provided by RefSeq, Jul 2008]

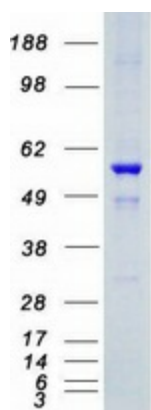
**Product images:**



Circular map for RC204416



Western blot validation of overexpression lysate (Cat# [LY415716]) using anti-DDK antibody (Cat# [TA50011-100]). Left: Cell lysates from untransfected HEK293T cells; Right: Cell lysates from HEK293T cells transfected with RC204416 using transfection reagent MegaTran 2.0 (Cat# [TT210002]).



Coomassie blue staining of purified SGK3 protein (Cat# [TP304416]). The protein was produced from HEK293T cells transfected with SGK3 cDNA clone (Cat# RC204416) using MegaTran 2.0 (Cat# [TT210002]).