

Product datasheet for **RC204413**

MRPL50 (NM_019051) Human Tagged ORF Clone

Product data:

Product Type: Expression Plasmids
Product Name: MRPL50 (NM_019051) Human Tagged ORF Clone
Tag: Myc-DDK
Symbol: MRPL50
Synonyms: MRP-L50
Mammalian Cell Selection: Neomycin
Vector: pCMV6-Entry (PS100001)
E. coli Selection: Kanamycin (25 ug/mL)
ORF Nucleotide Sequence: >RC204413 ORF sequence
Red=Cloning site Blue=ORF Green=Tags(s)

TTTTGTAATACGACTCACTATAGGGCGGCCGGAATTCGTCGACTGGATCCGGTACCGAGGAGATCTGCC
GCC**CGATCGCC**

ATGGCGGCGGATCTGTGTCGGGCATTACCAGAAGAGTCTTCATGTGGACAGTCTCAGGGACACCATGTA
GAGAATTTTGGTCTCGATTAGAAAAGAGAAAGAGCCAGTGGTTGTTGAGACAGTAGAAGAGAAAAAGGA
ACCTATCCTAGTGTGCCACCTTACGAAGCCGAGCATAACACCCACCTGAAGATCTCCAGAGTCGTTTG
GAATCTTACGTTAAAGAAGTTTTGGTTCATCTTCTAGTAATTGGCAAGACATCTCCCTGGAAGATA
GTCGTCTAAAGTTCAATCTTCTGGCTCATTTAGCTGATGACTTGGGTCATGTAGTCCCTAACTCCAGACT
CCACCAGATGTGCAGGGTTAGAGATGTTTTGATTCTATAATGTCCCTATTCAAGATAGATCTAAATTT
GATGAAGTCACTGCGAGTAATCTGCCCCCAATTTGAAAATCACTTGGAGTTAC

ACGCGTACGCGGCCGCTCGAGCAGAACTCATCTCAGAAGAGGATCTGGCAGCAAATGATATCCTGGATT
ACAAGGATGACGACGATAAGGTTTAA

Protein Sequence: >RC204413 protein sequence
Red=Cloning site Green=Tags(s)

MAARSVSGITRRVFMWTVSGTPCREFWRSFRKEKEPVVETVEEKKEPILVCPPLRSRAYTPPEDLQSR
ESYVKEVFGSSLPSNWQDISLEDSRLKFNLLAHLADDLGHVVPNSRLHQMCRVRDVFDFYNVPIQDRSKF
DELSASNLPPNLKITWSY

TRTRPLEQKLISEEDLAANDILDYKDDDDKV

Chromatograms: https://cdn.origene.com/chromatograms/mk6325_g01.zip



[View online »](#)

Restriction Sites: SgfI-MluI

Cloning Scheme:



ACCN: NM_019051

ORF Size: 474 bp

OTI Disclaimer: The molecular sequence of this clone aligns with the gene accession number as a point of reference only. However, individual transcript sequences of the same gene can differ through naturally occurring variations (e.g. polymorphisms), each with its own valid existence. This clone is substantially in agreement with the reference, but a complete review of all prevailing variants is recommended prior to use. [More info](#)

OTI Annotation: This clone was engineered to express the complete ORF with an expression tag. Expression varies depending on the nature of the gene.

Components: The ORF clone is ion-exchange column purified and shipped in a 2D barcoded Matrix tube containing 10ug of transfection-ready, dried plasmid DNA (reconstitute with 100 ul of water).

Reconstitution Method:

1. Centrifuge at 5,000xg for 5min.
2. Carefully open the tube and add 100ul of sterile water to dissolve the DNA.
3. Close the tube and incubate for 10 minutes at room temperature.
4. Briefly vortex the tube and then do a quick spin (less than 5000xg) to concentrate the liquid at the bottom.
5. Store the suspended plasmid at -20°C. The DNA is stable for at least one year from date of shipping when stored at -20°C.

RefSeq: [NM_019051.3](#)

RefSeq Size: 1050 bp

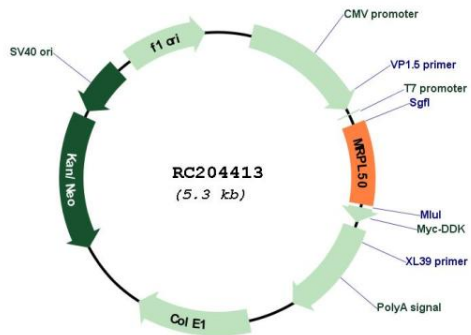
RefSeq ORF: 477 bp

Locus ID: 54534

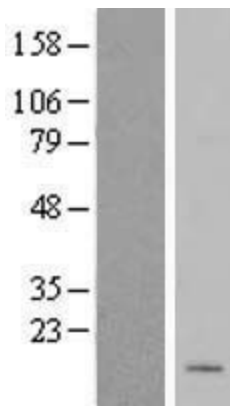
UniProt ID: [Q8N5N7](#)
 Cytogenetics: 9q31.1
 MW: 18.4 kDa

Gene Summary: Mammalian mitochondrial ribosomal proteins are encoded by nuclear genes and help in protein synthesis within the mitochondrion. Mitochondrial ribosomes (mitoribosomes) consist of a small 28S subunit and a large 39S subunit. They have an estimated 75% protein to rRNA composition compared to prokaryotic ribosomes, where this ratio is reversed. Another difference between mammalian mitoribosomes and prokaryotic ribosomes is that the latter contain a 5S rRNA. Among different species, the proteins comprising the mitoribosome differ greatly in sequence, and sometimes in biochemical properties, which prevents easy recognition by sequence homology. This gene encodes a putative 39S subunit protein and belongs to the L47P ribosomal protein family. Pseudogenes corresponding to this gene are found on chromosomes 2p, 2q, 5p, and 10q. [provided by RefSeq, Jul 2008]

Product images:



Circular map for RC204413



Western blot validation of overexpression lysate (Cat# [LY412790]) using anti-DDK antibody (Cat# [TA50011-100]). Left: Cell lysates from untransfected HEK293T cells; Right: Cell lysates from HEK293T cells transfected with RC204413 using transfection reagent MegaTran 2.0 (Cat# [TT210002]).