

Product datasheet for RC204410

NUP133 (NM_018230) Human Tagged ORF Clone

Product data:

Product Type:	Expression Plasmids
Product Name:	NUP133 (NM_018230) Human Tagged ORF Clone
Tag:	Myc-DDK
Symbol:	NUP133
Synonyms:	GAMOS8; hNUP133; NPHS18
Mammalian Cell Selection:	Neomycin
Vector:	pCMV6-Entry (PS100001)
E. coli Selection:	Kanamycin (25 ug/mL)
ORF Nucleotide Sequence:	>RC204410 ORF sequence Red=Cloning site Blue=ORF Green=Tags(s)

TTTTGTAATACGACTCACTATAGGGCGGCCGGAATTCGTCGACTGGATCCGGTACCGAGGAGATCTGCC
GCCCGCATCGCC

ATGTTCCAGCCGCCCTTCTCCGCGGACCCGGGTACCGGGTCCCGAAGGGGCCCGCTGGCCGGACTCG
GGCCCCGGTCCACGCCCGGACGGCTAGCAGGAAGGGTCTGCCCTGGGGTCTGCAGTCAGCTCCCCAGT
GCTTTCTCGCCGGTCGGCCGGGTAGCTCGCTAAGCTCGCGGGAAACCAACACGAATGTTCCACAC
CACTCCATAACTGAGTCTGTGAAGTATGATGTGAAAACGTTTGGATCTTCTCTTCTGTTAAAGTCATGG
AAGCCCTAACATTGGCTGAAGTCGATGACCAGCTGACCATTAACATAGATGAAGTGGATGGCTTGTCT
GGTGTGCAAAGAGAAGCTCATTATTTGGAAGATTGCTCTGTACCTATTACTAAGTTATCCGTTTGCAA
GAAGTTACAGTGCCACCTAGTGATTTCCACTGGAGTGCCGACTTGTGGCTCTTTCTTACTCTTCTCCCT
CAGGTGAAGCACATTCTACTCAGGCTGTTGCTGTGCATGGTTGCCACCAGAGAAGGATCTATCCGCTATTG
GCCAAGCCTTGCTGGTGAAGATACCTACACAGAGGCTTTTGTAGATTCGGGAGGTGATAAGACTTACAGT
TTCCTAACAGCAGTGCAGGGAGGAAGTTTTATTTGTCTTCATCAGGAAGCCAATAATTCGGTTGATC
CTGAGAGCTCAGGAAAGATTCATCAGCATATCCTGCCTCAGGGCAAGGCATGCTTTCAGGAATGGTGC
AAAAGTTTCTTCTTTTTGGAATTTATCTCCTAGTAGTGATCTCACACTTTCAAGTGTCTCTGGGAT
AGAGAGATCAAGCTTTTATAGCCTGACGAGTTCAAACATCAGTAAATGGGAATTAGATGATTCCTCAG
AAAAGCATGCATACAGTTGGGATATAAATAGAGCCCTGAAGGAAAACATTACCGATGCTATTTGGGGATC
TGAAAGTAACTATGAAGCTATTAAGAAGGAGTCAACATTCGATATTTGGACTTTAAGCAAAACTGTGAT
GGGCTGGTGATTTGGCAGCAGCATGGCACTCAGCAGACAATCCATGTCTCATCTATTACTCTCTGATAA
CAATAGAAGATAATGGTTGCCAAATGTCAGATGCAGTTACTGTAGAAGTCACTCAATATAATCCACCTTT
TCAGTCTGAAGACCTGATTTGTGTCAGTTGACGGTCCCAAACCTTTTCAAACCAGACTGCCTATCTGTAT
AACGAAAGTGTCTATGTGTGCTCCACAGGAAGTGGGAAATTTCTCTTCCCAGGAGAAAATTTGCT
TTAATGCACAAGGAGATAGTGTAGGTGCTGGTGCCTGTGGTGGTGTCTATCATTTTTTCTAGAAA
CAGTGGACTGGTGTCTATTACTCAAGGAAAAATGTGTCTATATTGGCAGAAGACTTGAAGGGTCTTTA



[View online »](#)

GCATCTTCAGTTGCTGGACCAAACAGTGAGAGTATGATTTTTGAGACCTACAAAGAATGAAACTATAG
CCCAGGAAGATAAAATCAAGTTGCTGAAAGCTGCCTTTCTGCAATACTGCAGAAAAGATTTAGGTCATGC
TCAAATGGTGGTTGATGAGCTCTTTTCTCTCACTCTGATTTGGATTCTGATTCTGAACTAGACAGGGCA
GTTACCCAAATCAGTGTAGACCTGATGGATGACTACCCAGCATCTGACCCACGGTGGGCTGAGTCTGTCC
CTGAGGAAGCACCTGGGTTGAGCAATACGTCAGTATTATCCTTCACCAGCTAGAAGACAAGATGAAAGC
TCACTCTTTTCTATGGACTTTATTCATCAAGTTGGCTTATTTGGACGTCTAGGCAGTTTTCCAGTTAGA
GGGACACCGATGGCCACTCGACTGTTGCTCTGTGAGCATGCCGAAAAGCTGTCAGCCGCCATTGTTCTCA
AGAACCACCACTCCCGGCTTTCTGACCTTGTCAACACAGCCATATTGATTGCTTTGAACAAGAGGGAGTA
TGAAATCCCATCCAACCTGACTCCTGCAGATGTCTTTTTCAGGGAGGTATCCCAAGTAGATACCATCTGT
GAGTGCTTACTGGAGCATGAGGAGCAAGTCTTGAGGGATGCACCTATGGATTCCATTGAATGGGCTGAAG
TGGTGATCAATGTGAACAATATTCTCAAGGATATGCTGCAGGCTGCTAGTCATTATCGCCAAAATAGAAA
CTCTTTGTATAGAAGAGAAGAATCACTAGAAAAAGAACCTGAATATGTTCCATGGACGGCAACAAGTGGT
CCTGGTGGCATCCGAACGGTAATAATACGCCAGCATGAGATTGCCTGAAGGTGGCTTATCCACAGGCAG
ACAGCAACCTCCGAAACATCGTGACCGAGCAGCTGGTAGCCCTGATCGATTGCTTCTGGATGGTTATGT
TTCTCAGCTTAAGTCTGTGGATAAATCCAGTAATCGGAAAAGATATGACAATCTGGAGATGGAATACCTA
CAGAAAAGATCAGATCTTATCTCCTTCTTTCACTAGGCCAGTACCTGTGGGCTGCTTCTCTAGCAG
AGAAATACTGTGACTTTGATATATTGGTACAAATGTGTGAGCAGACTGACAACCAGAGCCGACTCCAGCG
CTACATGACCCAGTTTGCTGATCAGAAATTTTTCAGACTTTCTTCCGTTGGTATCTGGAGAAAAGGAAA
CGAGGCAAATTATTATCTCAGCCATTTCTCAGCATGGACAGTTGGCAAATTTTTTGCAAGCTCATGAAC
ATCTCAGCTGGTTACATGAAATTAATAGCCAAGAATTAGAAAAGGCTCATGCAACACTTCTGGGTTTGGC
AAATATGGAAACTCGTTACTTTGCAAAGAAGAAAACCTTCTTGGCTTGAGTAAATTGGCTGCATTAGCT
TCAGACTTTTTCAGAGGATATGCTACAAGAAAAAATTGAAGAAATGGCTGAGCAGGAGCGCTTTCTACTGC
ATCAGGAGACCCTACCTGAACAGCTGCTGGCGGAGAAACAGCTAAATCTCAGTGCATGCCAGATTGAC
TGCACCACAACCTATTGGTCTATATATCTGTGAAGAAAAATAGAAGAGCTAATGAATATGATTTCAAGAAA
GCTTTGGACTTGTGGAATATATTGATGAGGAAGAAGATATAAATAAATGATCTAAAACCTGGAAATCC
TTTGCAAAGCTCTTCAGAGAGATAACTGGTCCAGTTCTGATGGCAAAGATGATCCAATTGAAGTATCTAA
AGACAGTATATTTGTGAAGATCTTACAGAACTTTTAAAAGATGGCATTACAGCTCAGTGAGTACTTACCG
GAGGTGAAAGACCTGCTACAAGCGGATCAGCTTGGAAAGCTTAAAGTCCAATCCTTACTTCGAGTTTGT
TGAAAGCAAATTATGAATATTATGTTTCAGGGACAATA

ACGCGTACGCGGCCGCTCGAGCAGAACTCATCTCAGAAGAGGATCTGGCAGCAAATGATATCCTGGATT
ACAAGGATGACGACGATAAGGTTTAA

Protein Sequence: >RC204410 protein sequence
 Red=Cloning site Green=Tags(s)

MFPAAPSPRTPGTGSRRLAGLPGGSPRTASRKLPLGSAVSSPVLFSVPVGRSSLSRGTPTRMFPH
 HSITESVNYDVKTFGSSLPVKMEALTLAEVDDQLTINIDEGGWACLVCKEKLIWKIALSPITKLSVCK
 ELQLPPSDFHWSADLVALSYSSPSGEAHSTQAVAVMVATREGSIRYWPSLAGEDTYTEAFVDSGGDKTYS
 FLTAVQGGSFILSSSGSQLIRLIPESGKIHQHILPQQGMLSGIGRVSSLFGILSPSSDLTSSVLWD
 RERSFYSLTSSNISKWELDDSEKHAYSWDINRALKENITDAIWGSESNEYEAIKEGVNIRYLDKQNC
 GLVILAAAWHSADNPCLIIYSLITIEDNGCQMSDAVTVEVTQYNPPFQSEDLILCQLTVPNFSNQTAYLY
 NESAVYVCSTGTGKFSLPQEKIVFNAQGDVSLGAGACGGVPIIFSRNSGLVSITSRENVSILAEDLEGL
 ASSVAGPNSESMIFETTTKNETIAQEDKIKLLKAAFLQYCRKDLGHAQMVDDELFSHSDLDSDSELDR
 VTQISVDLMDYPASDPRAESVPEEAPGFSNTSLIILHQLQEDKMKAHSLMDFIHQVGLFGRGSPV
 GTPMATRLLLCEHAEKLSAAIVLKNHHSRLSDLVNTAILIALNKREYEIPSNLTPADVFFREVSQVDTIC
 ECLLEHEEQVLRDAPMDSIEWAEVVINVNILKMDLQAASHYRQNRNSLYRREESLEKEPEYVPTATSG
 PGGIRTVIIRQHEIVLKVAYPQADSNLRNIVTEQLVALIDCFLDGYVSQKSVDKSSNRERYDNLEMEYL
 QKRSDLLSPLLSLGQYLWAAASLAEKYCDFDILVQMCQETDNQSRQRYMTQFADQNFSDFLFRWYLEK
 GKRGKLLSQPISQHGQLANFLQAHEHLSWLHEINSQELEKAHATLLGLANMETRYFAKKKTLGLSKLA
 ALASDFSEDMLQEKIEEMAEQERFLLHQETLPEQLLAEKQLNLSAMPVLTAPQLIGLYICEENRRANEYDF
 FKKALDLLEYIDEEEDININDLKLEILCKALQRDNWSSSDGKDDPIEVSKDSIFVKILQKLLKDGILQ
 SEYLP
 EVKDLLQADQLGSLKSNPYFEFVLKANYEYVQGGI

TRTRPLEQKLISEEDLAANDILDYKDDDDKV

Chromatograms: https://cdn.origene.com/chromatograms/mk6261_h03.zip

Restriction Sites: SgfI-MluI

Cloning Scheme:

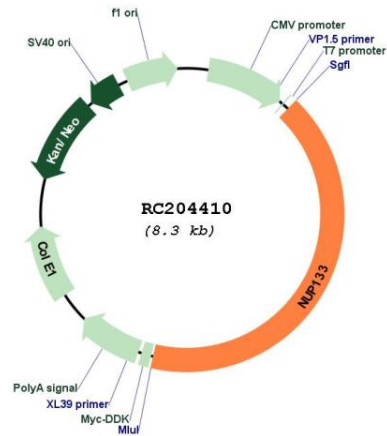


ACCN: NM_018230

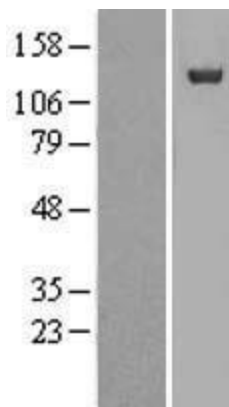
ORF Size: 3468 bp

OTI Disclaimer:	The molecular sequence of this clone aligns with the gene accession number as a point of reference only. However, individual transcript sequences of the same gene can differ through naturally occurring variations (e.g. polymorphisms), each with its own valid existence. This clone is substantially in agreement with the reference, but a complete review of all prevailing variants is recommended prior to use. More info
OTI Annotation:	This clone was engineered to express the complete ORF with an expression tag. Expression varies depending on the nature of the gene.
Components:	The ORF clone is ion-exchange column purified and shipped in a 2D barcoded Matrix tube containing 10ug of transfection-ready, dried plasmid DNA (reconstitute with 100 ul of water).
Reconstitution Method:	<ol style="list-style-type: none">1. Centrifuge at 5,000xg for 5min.2. Carefully open the tube and add 100ul of sterile water to dissolve the DNA.3. Close the tube and incubate for 10 minutes at room temperature.4. Briefly vortex the tube and then do a quick spin (less than 5000xg) to concentrate the liquid at the bottom.5. Store the suspended plasmid at -20°C. The DNA is stable for at least one year from date of shipping when stored at -20°C.
RefSeq:	NM_018230.3
RefSeq Size:	4170 bp
RefSeq ORF:	3471 bp
Locus ID:	55746
UniProt ID:	Q8WUM0
Cytogenetics:	1q42.13
Domains:	Nup133
MW:	129 kDa
Gene Summary:	The nuclear envelope creates distinct nuclear and cytoplasmic compartments in eukaryotic cells. It consists of two concentric membranes perforated by nuclear pores, large protein complexes that form aqueous channels to regulate the flow of macromolecules between the nucleus and the cytoplasm. These complexes are composed of at least 100 different polypeptide subunits, many of which belong to the nucleoporin family. The nucleoporin protein encoded by this gene displays evolutionarily conserved interactions with other nucleoporins. This protein, which localizes to both sides of the nuclear pore complex at interphase, remains associated with the complex during mitosis and is targeted at early stages to the reforming nuclear envelope. This protein also localizes to kinetochores of mitotic cells. [provided by RefSeq, Jul 2008]

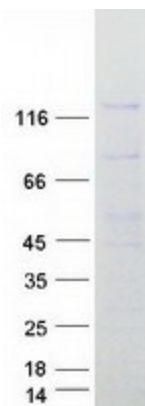
Product images:



Circular map for RC204410



Western blot validation of overexpression lysate (Cat# [LY413210]) using anti-DDK antibody (Cat# [TA50011-100]). Left: Cell lysates from untransfected HEK293T cells; Right: Cell lysates from HEK293T cells transfected with RC204410 using transfection reagent MegaTran 2.0 (Cat# [TT210002]).



Coomassie blue staining of purified NUP133 protein (Cat# [TP304410]). The protein was produced from HEK293T cells transfected with NUP133 cDNA clone (Cat# RC204410) using MegaTran 2.0 (Cat# [TT210002]).