

## Product datasheet for **RC204409**

### **TMEM143 (NM\_018273) Human Tagged ORF Clone**

#### **Product data:**

Product Type:	Expression Plasmids
Product Name:	TMEM143 (NM_018273) Human Tagged ORF Clone
Tag:	Myc-DDK
Symbol:	TMEM143
Mammalian Cell Selection:	Neomycin
Vector:	pCMV6-Entry (PS100001)
E. coli Selection:	Kanamycin (25 ug/mL)



[View online »](#)

**ORF Nucleotide Sequence:**

>RC204409 ORF sequence  
 Red=Cloning site Blue=ORF Green=Tags(s)

TTTTGTAATACGACTCACTATAGGGCGGCCGGAATTCGTCGACTGGATCCGGTACCGAGGAGATCTGCC  
 GCC**CGCATCGCC**

ATGACAGTCGAGCTTTGGCTAAGGCTCCGGGAAAGGTTAGCCATGCTGCATGTGACCCGGGGGTCT  
 GGGGTCCAGGTCAGATATGGCACTGTTGCCCGCTCCTCGGGCCCCCGGGCCCTCATCGCT  
 GGCAGCCAAAATGGGGAGTATCGCAAGATGTGGAACCCAGGGAGCCCCGCGACTGGGCCAGCAGTAC  
 CGCGAGCGCTTATTCCCTTCTCCAAGGAGCAGCTGCTCCGCTCCTAATACAGGAATTCAGTACGAGT  
 CGGAGAGAAAGCGGCTTTGGAGCGTTCTCGGCCACGTGGACTTCTGCACCCTGTTCCACTACCACCA  
 AATCCTGGCCCGCTGCAGGCTTATATGACCCCATCAACCTGACAGGGAGACCCTCGATCAGCCATCA  
 CTAACGGATCCCAGCGTCTGTCTAATGAGCAGGAGGTGCTTCGGCTCTGGAGCCCTGCTGGCCAGG  
 CCAACTTCTCCCGCTGTCTGAGGACACCCTGGCTACGCGCTGGTGGTCCACCACCCTCAGGATGAGGT  
 CCAGGTGACAGTAAATTTGGATCAGTATGTCTACATTCCTTCTGGGCCCTGGCCAGCGAGTGGGCGAG  
 ATGCCCTGAAGTCCAGCGTGGCTCCAGGCGTGGCTTCTTACCAAGCTGCCCCCTGCGGAGAGGAGAT  
 ACTTTAAGCGGGTGGTCTTGGCAGCCCGGACCAACGGGGACACCTGGTACTGAAGAGTTTCAAGGACAC  
 GCCGCTGGAAGGCTGGAGCAGCTGCTGCCGAGCTGAAGGTGCGCACGCCACCCTGCAGCGCGCCCTG  
 CTCAACCTCATGCTGGTAGTCTCCGGCTGGCGATCTTCGTCAACGTGGGCTGGGCGCTCCAAGATGTT  
 CGGGCAGCGCGCAGCGCGCAGGCGTTGGAGCTGGCGCACATGCTGTACTATCGCAGTACGTCCAACAAC  
 TCGGAGCTGCTCAGCGCCCTGGCCCTGCGCGCAGGACGAGCACACCAAGGAGGCGCTGCTGGCTCACA  
 GCTTCTGGCCCGCGCCAGGGGCACTCAAGGCTCGCCGAAGAGACCTCCAGGTGGCTCAGGTCGGA  
 GGTGGAGAACTGGCTCCTAGCCAAGTCAGGCTGTGAGGTGACCTTCAACGGAACCTCGGGCCCTGGCGCAT  
 CTGAGGCCCTGACCCCAAGCATGGATTGTACCCACCCCGGGTTTCCCAAACCTAGACCCAGTGGCTC  
 CGATCACTTCGAGCCCCGCAAGCCACGCCAGCAGTAAACATCTCC

**ACGCGT**ACGCGGCCGCTCGAGCAGAACTCATCTCAGAAGAGGATCTGGCAGCAAATGATATCTGGATT  
 ACAAGGATGACGACGATAAGGTTTAA

**Protein Sequence:**

>RC204409 protein sequence  
 Red=Cloning site Green=Tags(s)

MTVELWLRLRGKGLAMLHVTRGVWGSRVVWPLLPALLGPPRALSSLAAKMGEYRKMWNPREPRDWAQQY  
 RERFIPFSKEQLRLLIQEFHSSPAEKAALAEAFSAHVDFCTLFHYHQILARLQALYDPINPDRELDQPS  
 LTDPQRLSNEQEVLRALPELLAQANFSPLSEDTLAYALVVHHPQDEVQVTVNLDQYVYIHFWALGQRVGQ  
 MPLKSSVGSRRGFFTKLPPAERRYFKRVVLAARTKRGHLVLSFKDTPLEGLEQLPELVKVRTPTLQRAL  
 LNLMLVVSQVAIFVNVGMVVLTDLKVATSLLLLLFAIFMGLRASKMFGQRRSAQALELAHMLYYRSTSN  
 SELLALALRAQDEHTKEALLAHSFLARRPGGTQGSPEETSRLRSEVENWLLAKSGCEVTFNGTRALAH  
 LQALTPSMGLYPPGFPKLDPVAPITSEPPQATPSSNIS

**TR**TRPLEQKLISEEDLAANDILDYKDDDDKV

**Chromatograms:**

[https://cdn.origene.com/chromatograms/mk6538\\_f09.zip](https://cdn.origene.com/chromatograms/mk6538_f09.zip)

**Restriction Sites:**

Sgfl-Mlul

**Cloning Scheme:**

**ACCN:** NM\_018273

**ORF Size:** 1377 bp

**OTI Disclaimer:** The molecular sequence of this clone aligns with the gene accession number as a point of reference only. However, individual transcript sequences of the same gene can differ through naturally occurring variations (e.g. polymorphisms), each with its own valid existence. This clone is substantially in agreement with the reference, but a complete review of all prevailing variants is recommended prior to use. [More info](#)

**OTI Annotation:** This clone was engineered to express the complete ORF with an expression tag. Expression varies depending on the nature of the gene.

**Components:** The ORF clone is ion-exchange column purified and shipped in a 2D barcoded Matrix tube containing 10ug of transfection-ready, dried plasmid DNA (reconstitute with 100 ul of water).

- Reconstitution Method:**
1. Centrifuge at 5,000xg for 5min.
  2. Carefully open the tube and add 100ul of sterile water to dissolve the DNA.
  3. Close the tube and incubate for 10 minutes at room temperature.
  4. Briefly vortex the tube and then do a quick spin (less than 5000xg) to concentrate the liquid at the bottom.
  5. Store the suspended plasmid at -20°C. The DNA is stable for at least one year from date of shipping when stored at -20°C.

**RefSeq:** [NM\\_018273.2](#), [NP\\_060743.2](#)
**RefSeq Size:** 2265 bp

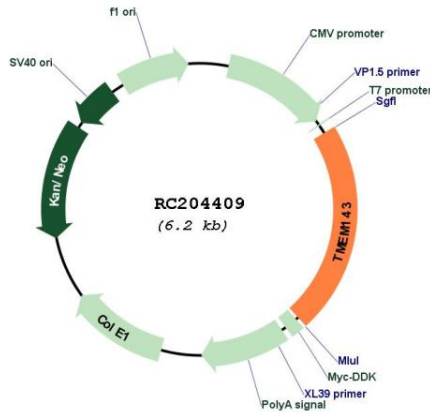
**RefSeq ORF:** 1380 bp

**Locus ID:** 55260

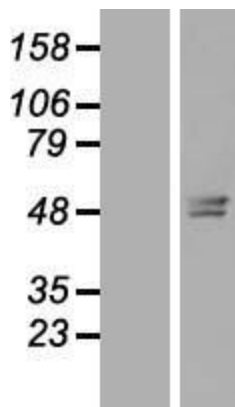
**UniProt ID:** [Q96AN5](#)

**Cytogenetics:** 19q13.33  
**Protein Families:** Transmembrane  
**MW:** 51.7 kDa

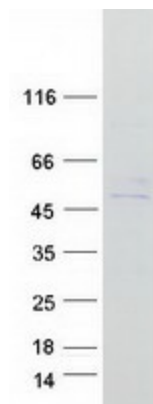
**Product images:**



Circular map for RC204409



Western blot validation of overexpression lysate (Cat# [LY413169]) using anti-DDK antibody (Cat# [TA50011-100]). Left: Cell lysates from untransfected HEK293T cells; Right: Cell lysates from HEK293T cells transfected with RC204409 using transfection reagent MegaTran 2.0 (Cat# [TT210002]).



Coomassie blue staining of purified TMEM143 protein (Cat# [TP304409]). The protein was produced from HEK293T cells transfected with TMEM143 cDNA clone (Cat# RC204409) using MegaTran 2.0 (Cat# [TT210002]).