

## Product datasheet for **RC204407**

### beta TRCP2 (FBXW11) (NM\_033644) Human Tagged ORF Clone

#### Product data:

Product Type:	Expression Plasmids
Product Name:	beta TRCP2 (FBXW11) (NM_033644) Human Tagged ORF Clone
Tag:	Myc-DDK
Symbol:	beta TRCP2
Synonyms:	BTRC2; BTRCP2; FBW1B; Fbw11; FBXW1B; Hos; NEDJED
Mammalian Cell Selection:	Neomycin
Vector:	pCMV6-Entry (PS100001)
E. coli Selection:	Kanamycin (25 ug/mL)



[View online »](#)

**ORF Nucleotide Sequence:**

>RC204407 ORF sequence  
 Red=Cloning site Blue=ORF Green=Tags(s)

TTTTGTAATACGACTCACTATAGGGCGGCCGGAATTCGTCGACTGGATCCGGTACCGAGGAGATCTGCC  
 GCC**CGGATCGCC**

ATGGAGCCCGACTCGGTGATTGAGGACAAGACCATCGAGCTCATGAACACTTCAGTTATGGAAGATCAAA  
 ATGAAGATGAGTCCCAAGAAAAATACTTTGGCAGATAAGTAATGGAACATCATCTGTGATCGTCTC  
 CAGAAAGAGGCCATCAGAAGAACTATCAAAAAGAAAAAGACTTGTGTATTAATATTTTGACCAGTGG  
 TCTGAATCAGATCAAGTGAATTTGTGGAACATCTTATTTACGAATGTGTATTATCAGCATGGACATA  
 TTAACTCTTACCTGAAGCCCATGTTGCAGCGGGACTTTATTACCGCTTTACCAGAGCAAGGCTTAGATCA  
 CATAGCAGAAAACATTCTTTCTACCTGGATGCCAGGTCTCTGTGTGCAGCAGAGCTGGTATGTAAGAA  
 TGGCAGCGAGTGATCTCAGAAGGAATGCTTTGGAAGAAGCTGATTGAACGAATGGTACGCACTGATCCCC  
 TATGGAAGGACTTTAGAAAGAAGAGGGTGGGATCAGTACCTGTTTAAAAACAGACCCACAGATGGCCC  
 TCCAAATTCATTTATAGGTCATTATACCCAAAGATTATCCAGGATATAGAGACTATAGAATCTAACTGG  
 CGGTGTGGACGACACAACCTGCAGAGGATTCAGTGCCGCTCTGAAAATAGTAAAGGTGTCTACTGTTAC  
 AGTACGATGATGAAAAATTATCAGTGGCTACGAGATAATTCTATTAAGATATGGGATAAAACCAGCCT  
 GGAATGTTTAAAGTGTTAACAGGACACACAGGCTCTGTCCTCTGTCTGCAGTATGATGAGCGTGTCTATT  
 GTAAGTGGCTCTCAGATTCTACGGTGAGAGTGTGGGATGTGAACACGGGTGAAGTTCTTAACACATTGA  
 TCCACCACAATGAGGCTGTATTGCATTCAGCTTCAGCAATGGACTGATGGTGACCTGTTCCAAGGACCG  
 CTCCATTGCTGTGTGGGACATGGCTTCTGCGACCGACATCACTTACGCCGTGCTCTGGTGGCCACCGG  
 GCTGCCGTCAATGTAGTAGACTTTGACGACAAGTACATCGTGTCTGCCTCTGGTGACAGGACCATCAAAG  
 TCTGGAGCAGGACACCTGTGAATTTGTCGACTCTCAATGGGCACAAGCGGGGCTTGCCTGTCTCCA  
 GTACAGGGATCGCTGGTTGTTAGTGGATCATCAGATAATACCATTAGGCTCTGGGATATTGAATGTGGT  
 GCCTGTTTAAAGTCTAGAGGACATGAAGAATTGGTCCGATGCATCCGGTTTGATAAACAAGAGGATTG  
 TCAGTGGGCTATGATGGGAAAATTAAGTTTGGGACTTGAAGCTGCTCTTGACCCTCGAGCCCCAGC  
 AAGCACATTGTGTTTGGCACATTGGTGAACATTCTGGACGTGTGTTTCGGCTCCAGTTTGATGAGTTT  
 CAGATCATCAGCAGCTCCCATGATGACACTATTTTATTGGGATTTCTTAATGTGCCTCCAGTGCC  
 AGAATGAGACCCGTTCTCCCTCCAGAACATACACTTACATCTCTAGA

**ACGCGT**ACGCGGCCGCTCGAGCAGAACTCATCTCAGAAGAGGATCTGGCAGCAAATGATATCCTGGATT  
 ACAAGGATGACGACGATAAGGTTTAA

**Protein Sequence:**

>RC204407 protein sequence  
 Red=Cloning site Green=Tags(s)

MEPDSVIEDKTIELMNTSVMEDQNEDESPKKNLWQISNGTSSVIVSRKRPSEGNVQKEKDLCIKYFDQW  
 SESDQVEFVEHLISRMCHYQHGINSYLPMLQRDFITALPEQGLDHIAENILSYLDARSLCAAELVCKE  
 WQRVISEGMLWKKLIERMVTRDPLWKLSERRGWDQYLFKNRPTDGPNSFYRSLYPKIIQDIETIESNW  
 RCGRHNLQRIQCRSENSKGVYCLQYDDEKIIISGLRDNSIKIWDKTSLECLKVLTGHTGSVLCQYDERVI  
 VTGSSDSTVRVVDVNTGEVLNLIHNEAVLHLRFSNGLMVTCSKDRSIAVWDMASATDITLRRVLVGRH  
 AAVNVVDFDDKYIVSASGDRTIKVWSTSTCEFVRTLNHGKRGIAQLYRDRLVVSAGSSDNTIRLWDIECG  
 ACLRVLEGHEELVRCIRFDNKRIVSGAYDGKIKVWDLQAALDPRAPASTLCLRTLVEHSGRVFRLQFDEF  
 QIISSSHDDTILIWDFLNVPQAQNETRSPSRITYYISR

**TRTRPLEQKLI**SEEDLAANDILDYKDDDDKV

**Chromatograms:**

[https://cdn.origene.com/chromatograms/mk6245\\_f10.zip](https://cdn.origene.com/chromatograms/mk6245_f10.zip)

**Restriction Sites:**

Sgfl-MluI

**Cloning Scheme:**


**ACCN:** NM\_033644

**ORF Size:** 1587 bp

**OTI Disclaimer:** The molecular sequence of this clone aligns with the gene accession number as a point of reference only. However, individual transcript sequences of the same gene can differ through naturally occurring variations (e.g. polymorphisms), each with its own valid existence. This clone is substantially in agreement with the reference, but a complete review of all prevailing variants is recommended prior to use. [More info](#)

**OTI Annotation:** This clone was engineered to express the complete ORF with an expression tag. Expression varies depending on the nature of the gene.

**Components:** The ORF clone is ion-exchange column purified and shipped in a 2D barcoded Matrix tube containing 10ug of transfection-ready, dried plasmid DNA (reconstitute with 100 ul of water).

- Reconstitution Method:**
1. Centrifuge at 5,000xg for 5min.
  2. Carefully open the tube and add 100ul of sterile water to dissolve the DNA.
  3. Close the tube and incubate for 10 minutes at room temperature.
  4. Briefly vortex the tube and then do a quick spin (less than 5000xg) to concentrate the liquid at the bottom.
  5. Store the suspended plasmid at -20°C. The DNA is stable for at least one year from date of shipping when stored at -20°C.

**RefSeq:** [NM\\_033644.3](#)

**RefSeq Size:** 4536 bp

**RefSeq ORF:** 1590 bp

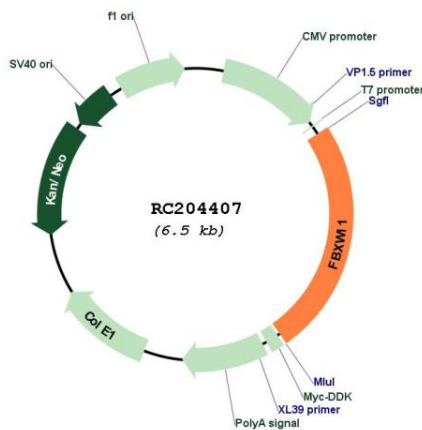
**Locus ID:** 23291

**UniProt ID:** [Q9UKB1](#)

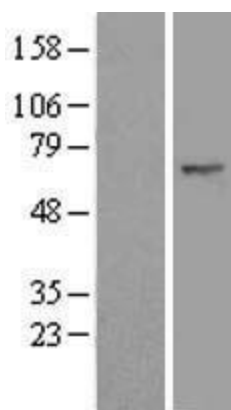
**Cytogenetics:** 5q35.1

<b>Domains:</b>	WD40, F-box
<b>Protein Families:</b>	Druggable Genome
<b>Protein Pathways:</b>	Hedgehog signaling pathway, Oocyte meiosis, Ubiquitin mediated proteolysis, Wnt signaling pathway
<b>MW:</b>	60.9 kDa
<b>Gene Summary:</b>	This gene encodes a member of the F-box protein family which is characterized by an approximately 40 amino acid motif, the F-box. The F-box proteins constitute one of the four subunits of ubiquitin protein ligase complex called SCFs (SKP1-cullin-F-box), which function in phosphorylation-dependent ubiquitination. The F-box proteins are divided into 3 classes: Fbws containing WD-40 domains, Fbls containing leucine-rich repeats, and Fbxs containing either different protein-protein interaction modules or no recognizable motifs. The protein encoded by this gene belongs to the Fbws class and, in addition to an F-box, contains multiple WD40 repeats. This gene contains at least 14 exons, and its alternative splicing generates 3 transcript variants diverging at the presence/absence of two alternate exons. [provided by RefSeq, Jul 2008]

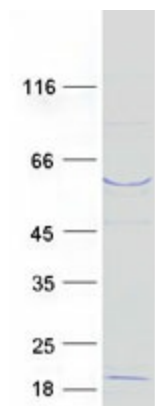
**Product images:**



Circular map for RC204407



Western blot validation of overexpression lysate (Cat# [LY409480]) using anti-DDK antibody (Cat# [TA50011-100]). Left: Cell lysates from untransfected HEK293T cells; Right: Cell lysates from HEK293T cells transfected with RC204407 using transfection reagent MegaTran 2.0 (Cat# [TT210002]).



Coomassie blue staining of purified FBXW11 protein (Cat# [TP304407]). The protein was produced from HEK293T cells transfected with FBXW11 cDNA clone (Cat# RC204407) using MegaTran 2.0 (Cat# [TT210002]).