

Product datasheet for **RC204404**

SLP76 (LCP2) (NM_005565) Human Tagged ORF Clone

Product data:

Product Type:	Expression Plasmids
Product Name:	SLP76 (LCP2) (NM_005565) Human Tagged ORF Clone
Tag:	Myc-DDK
Symbol:	SLP76
Synonyms:	IMD81; SLP-76; SLP76
Mammalian Cell Selection:	Neomycin
Vector:	pCMV6-Entry (PS100001)
E. coli Selection:	Kanamycin (25 ug/mL)



[View online »](#)

ORF Nucleotide Sequence:

>RC204404 ORF sequence
 Red=Cloning site Blue=ORF Green=Tags(s)

TTTTGTAATACGACTCACTATAGGGCGGCCGGAATTCGTCGACTGGATCCGGTACCGAGGAGATCTGCC
 GCC**CGGATCGCC**

ATGGCACTGAGGAATGTGCCCTTCGCTCAGAGGTCTGGGCTGGGACCCCGACAGCCTTGCTGACTATT
 TCAAGAAGCTCAACTATAAGGACTGTGAGAAGGCAGTGAAGAAGTACCACATCGATGGGGCTCGCTTCTT
 GAACCTGACAGAAAATGACATCCAGAAGTTCSSCAAGCTCCGGGTGCCGATTCTCAGTAAGTAAAGTCAG
 GAAATCAACAAGAACGAAGAGAGGAGGAGCATCTTACACGCAAACCCCAAGTCCCGCGGTTTCTGAAG
 AGACAGAAAGCCACGAAGAGGACAATGGGGCTGGTCTCCTTTGAAGAAGACGATTATGAAAGTCCCAA
 TGATGACCAGGATGGGGAGGATGATGGAGACTATGAGTCCCCAATGAGGAGGAAGAGGCACCCGTGAA
 GATGACCGGATTATGAGCCGCCACCCTCCAATGACGAGGAAGCTCTGCAGAACTCCATCTGCCTGCCA
 AGCCTTTCCCAACTCCAATCCATGTACATCGACCGGCCCCCTCTGGGAAAACCCCCAGCAGCCTCC
 TGTGCCCCCCAGAGACCGATGGCCGCCCTCCCGCCCCACCAGCCGGCCGGAATCACTCGCCACTGCC
 CCACCCAGACCAACCACGAAGAACCAGCAGAAGCAGAAACCACAAAACGGCAAAGCTCCCTGCTCCTT
 CAATAGACAGAAGCACGAAACCTCCCCTAGATCGTTCATTAGCTCCGTTTGATAGAGAACCCTTCACT
 AGGAAAGAAACCACATTTTCTGACAAGCCCTCGATTCCAGCGGGAAGGTCACTCGGGGAGCATTACCC
 AAGATTCAAAAGCCTCCTTACCACCGACCACGGAAGACATGAAAGGAGCAGCCCTGCCAGGGAAGA
 AGCCACCTGTGCCAAAGCATGGATGGGGACCAGACAGAAGAGAGAATGATGAAGATGATGTGCATCAGAG
 ACCTTTGCCCCAGCCAGCACTACTTCTATGAGCTCCAACACTTCCCTCAAGTCTACTAAGCCAAGT
 CCCATGAACCTCTCCCATCCTCTCACATGCCTGGAGCATTCTCAGAAAGTAACAGCAGTTTTCCACAGA
 GTGCCTCCCTGCCACCATACTTCTCAAGGCCCTAGCAACAGACCACCTATCAGAGCCGAAGGCAGAAA
 CTTCCCTTGCCACTTCAAACAACCTCGGCCCCATCCCCCGGGAGGAAGAGAATTCATTAATGAA
 GAGTGGTACGTTTCTTATATTACCCGACCAGGCGAGAAGCTGCTCTTAGAAAGATAAACAGGATGGCA
 CATTTCTGGTCAGAGACAGCTCTAAAAAACAACAACCAATCCATATGTCCTCATGGTGTGTACAAAGA
 TAAAGTTTACAACATCCAGATCCGTTATCAGAAGGAAAGTCAAGTTTACTTGTGGGAACTGGACTCCGA
 GGGAAAGAGGACTTTCTGTCTGTGCAGATATTATTGACTACTTCAGGAAAATGCCACTTCTGCTCATTG
 ATGGGAAAACCGAGGTTCCAGATACCAGTGCACATTAACGCATGCTGCAGGGTACCCA

ACGCGTACGCGGCCGCTCGAGCAGAACTCATCTCAGAAGAGGATCTGGCAGCAAATGATATCCTGGATT
 ACAAGGATGACGACGATAAGGTTTAA

Protein Sequence:

>RC204404 protein sequence
 Red=Cloning site Green=Tags(s)

MALRNVPFRSEVLGWDPDSLADYFKKLNKDKCEKAVKKYHIDGARFLNLTENDIQKFPKLRVPILSKLSQ
 EINKNEERRSIFTRKPQVPRFPEETESHEEDNGGWSFEEDDYESPNDQDGEDDGDYESPNEEEEAPVE
 DDADYEPSPNDEEALQNSILPAKPFNSNSMYIDRPPSGKTPQQPPVPPQRPMAALPPPAGRNHSPLP
 PPQTNHEEPSRSRNHKTAKLPAPSIDRSTKPLDRSLAPFDREPF TLGKKPPFSDKPSIPAGRSLGEHLP
 KIQKPLPPTTERHERSSPLPGKKPPVPKHGWGPDREDDVHQRPLQPALLPMSNTFPSRSTKPS
 PMNPLSSHMPGAFSESNSFPQSASLPPYFSQGSPNRPPIRAEGRNFLPLPNKPRPPSPAEEENSLNE
 EWYVSYITRPEAEALRKINQDGTFLVRDSSKTTTNPYVLMVL YKDKVYNIQIRYQKESQVYLLGTGLR
 GKEDFLSVSDIIDYFRKMPLLLIDGKNRGSRYQCTLTHAAGYP

TRTRPLEQKLISEEDLAANDILDYKDDDDKV

Chromatograms:

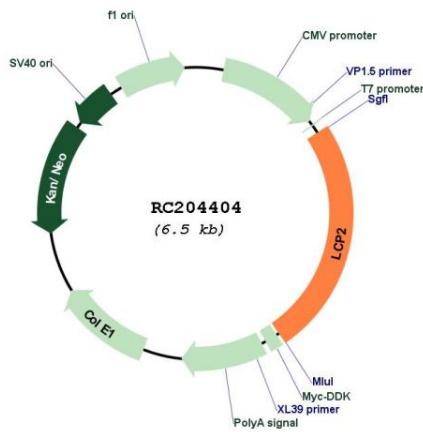
https://cdn.origene.com/chromatograms/mk6039_a04.zip

Restriction Sites:

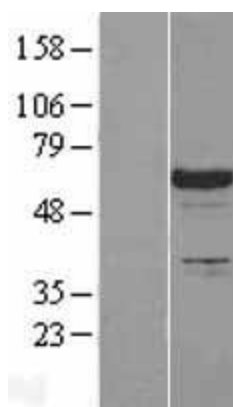
Sgfl-Mlul

RefSeq Size:	2472 bp
RefSeq ORF:	1602 bp
Locus ID:	3937
UniProt ID:	Q13094
Cytogenetics:	5q35.1
Domains:	SH2, SAM
Protein Pathways:	Fc epsilon RI signaling pathway, Natural killer cell mediated cytotoxicity, T cell receptor signaling pathway
MW:	60.2 kDa
Gene Summary:	This gene encodes an adapter protein that acts as a substrate of the T cell antigen receptor (TCR)-activated protein tyrosine kinase pathway. The encoded protein associates with growth factor receptor bound protein 2, and is thought to play a role TCR-mediated intracellular signal transduction. A similar protein in mouse plays a role in normal T-cell development and activation. Mice lacking this gene show subcutaneous and intraperitoneal fetal hemorrhaging, dysfunctional platelets and impaired viability. [provided by RefSeq, Nov 2016]

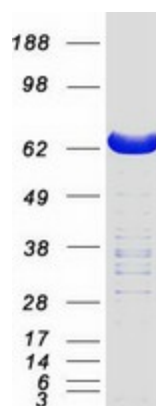
Product images:



Circular map for RC204404



Western blot validation of overexpression lysate (Cat# [LY417227]) using anti-DDK antibody (Cat# [TA50011-100]). Left: Cell lysates from untransfected HEK293T cells; Right: Cell lysates from HEK293T cells transfected with RC204404 using transfection reagent MegaTran 2.0 (Cat# [TT210002]).



Coomassie blue staining of purified LCP2 protein (Cat# [TP304404]). The protein was produced from HEK293T cells transfected with LCP2 cDNA clone (Cat# RC204404) using MegaTran 2.0 (Cat# [TT210002]).