

Product datasheet for **RC204399**

GOLGA7 (NM_001002296) Human Tagged ORF Clone

Product data:

Product Type: Expression Plasmids
Product Name: GOLGA7 (NM_001002296) Human Tagged ORF Clone
Tag: Myc-DDK
Symbol: GOLGA7
Synonyms: GCP16; GOLGA3AP1; GOLGA7A; HSPC041
Mammalian Cell Selection: Neomycin
Vector: pCMV6-Entry (PS100001)
E. coli Selection: Kanamycin (25 ug/mL)
ORF Nucleotide Sequence: >RC204399 ORF sequence
Red=Cloning site Blue=ORF Green=Tags(s)

TTTTGTAATACGACTCACTATAGGGCGGCCGGAATTCGTCGACTGGATCCGGTACCGAGGAGATCTGCC
GCC**CGATCGCC**

ATGAGGCCGAGCAGGCCCGGTGTCCGAAAGGTGTTTCATTTCAGCGAGACTACAGCAGTGGCACACGCT
GCCAGTTCAGACCAAGTCCCTGCGGAGCTGGAGAACCGGATTGATAGGCAGCAGTTTGAAGAAACAGT
TCGAATCTAAATAACCTTTATGCAGAAGCAGAGAAGCTTGGCGCCAGTCATATCTCGAAGTTGTTTG
GCTTGTTAACAGCATATACCATCTTCTATGCATGGAAGCTCATTATGAGAAGTTCTGAAGAAAGTCT
CCAAATACATTCAAGAGCAGAATGAGAAGATCTATGCTCCACAAGCCTCCTCTGACAGACCCTATTGA
GCGAGGACTGCGAGTTATTGAAATTACCATTTATGAAGACAGAGGCATGAGCAGTGAAGA

ACGCGTACGCGGCCGCTCGAGCAGAAACTCATCTCAGAAGAGGATCTGGCAGCAAATGATATCCTGGATT
ACAAGGATGACGACGATAAGGTTTAA

Protein Sequence: >RC204399 protein sequence
Red=Cloning site Green=Tags(s)
MRPQQAPVSGKVFIQRDYSSGTRCQFQTKFPAELENRIDRQQFEETVRTLNLYAEAEKLGQSYLEGCL
ACL TAYTIFLCMETHYEKVLKKVSKYIQEQNEKIYAPQGLLLTDPIERGLRVIEITIIYEDRGMSSGR
TRTRPLEQKLISEEDLAANDILDYKDDDDKV

Chromatograms: https://cdn.origene.com/chromatograms/mk6325_c11.zip

Restriction Sites: SgfI-MluI



[View online »](#)

Cloning Scheme:


ACCN: NM_001002296

ORF Size: 411 bp

OTI Disclaimer: The molecular sequence of this clone aligns with the gene accession number as a point of reference only. However, individual transcript sequences of the same gene can differ through naturally occurring variations (e.g. polymorphisms), each with its own valid existence. This clone is substantially in agreement with the reference, but a complete review of all prevailing variants is recommended prior to use. [More info](#)

OTI Annotation: This clone was engineered to express the complete ORF with an expression tag. Expression varies depending on the nature of the gene.

Components: The ORF clone is ion-exchange column purified and shipped in a 2D barcoded Matrix tube containing 10ug of transfection-ready, dried plasmid DNA (reconstitute with 100 ul of water).

Reconstitution Method:

1. Centrifuge at 5,000xg for 5min.
2. Carefully open the tube and add 100ul of sterile water to dissolve the DNA.
3. Close the tube and incubate for 10 minutes at room temperature.
4. Briefly vortex the tube and then do a quick spin (less than 5000xg) to concentrate the liquid at the bottom.
5. Store the suspended plasmid at -20°C. The DNA is stable for at least one year from date of shipping when stored at -20°C.

RefSeq: [NM_001002296.1](#), [NP_001002296.1](#)

RefSeq Size: 2042 bp

RefSeq ORF: 414 bp

Locus ID: 51125

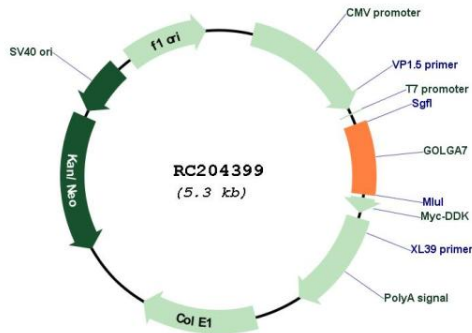
UniProt ID: [Q7Z5G4](#)

Cytogenetics: 8p11.21

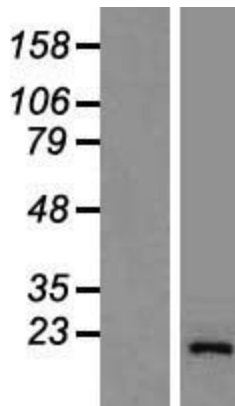
MW: 15.8 kDa

Gene Summary: May be involved in protein transport from Golgi to cell surface. The ZDHHC9-GOLGA7 complex is a palmitoyltransferase specific for HRAS and NRAS.[UniProtKB/Swiss-Prot Function]

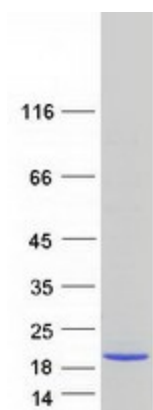
Product images:



Circular map for RC204399



Western blot validation of overexpression lysate (Cat# [LY414189]) using anti-DDK antibody (Cat# [TA50011-100]). Left: Cell lysates from untransfected HEK293T cells; Right: Cell lysates from HEK293T cells transfected with [RC212483] using transfection reagent MegaTran 2.0 (Cat# [TT210002]).



Coomassie blue staining of purified GOLGA7 protein (Cat# [TP304399]). The protein was produced from HEK293T cells transfected with GOLGA7 cDNA clone (Cat# RC204399) using MegaTran 2.0 (Cat# [TT210002]).