

Product datasheet for **RC204391**

SLC2A6 (NM_017585) Human Tagged ORF Clone

Product data:

Product Type:	Expression Plasmids
Product Name:	SLC2A6 (NM_017585) Human Tagged ORF Clone
Tag:	Myc-DDK
Symbol:	SLC2A6
Synonyms:	GLUT6; GLUT9; HSA011372
Mammalian Cell Selection:	Neomycin
Vector:	pCMV6-Entry (PS100001)
E. coli Selection:	Kanamycin (25 ug/mL)



[View online »](#)

ORF Nucleotide Sequence:

>RC204391 ORF sequence
 Red=Cloning site Blue=ORF Green=Tags(s)

TTTTGTAATACGACTCACTATAGGGCGGCCGGGAATTCGTCGACTGGATCCGGTACCGAGGAGATCTGCC
 GCC**GCGATCGCC**

ATGCAGGAGCCGCTGCTGGGAGCCGAGGGCCCGACTACGACACCTTCCCGAGAAGCCGCCCCGTCGC
 CAGGGGACAGGGCGGGTCGGGACCCTGCAGAACAAAAGGGTGTTCCTGGCCACCTTCGCCGAGTGCT
 CGGCAATTTACGCTTTGGGTATGCCCTGGTCTACACATCCCTGTCCAGCCCTGGAGCGCTCCTTG
 GATCCTGACCTGCATCTGACAAATCCCAGGCATCCTGGTTTGGGTCCGTGTTACCCTGGGAGCAGCGG
 CCGGAGGCTGAGTGCCATGATCCTCAACGACCTCCTGGGCCGGAAGCTGAGCATCATGTTCTCAGCTGT
 GCCGTCCGCGGCCGGCTATGCGCTCATGGCGGTGCGCACGGCCTCTGGATGCTGCTGCTCGAAGGACG
 CTGACGGGCTTCGCCGGGGGCTCACAGCTGCATCCGGGTACGTGTCTGAGATTCTCCCCAG
 GCGTTCGTGGGGCTCTGGGGCCACACCCAGCTCATGGCAGTGTTCGGATCCCTGTCCCTACGCCCT
 TGGCCTCTGCTGCCGTGGCGTGGCTGGCTGTGGCCGGGAGGGCCTGTGCTCATCATGATCCTGCTG
 CTAGCTTCATGCCAACCTCGCCGCGCTTCTGCTCTCTCGGGGACGGGACGAAGAGGCCCTGCGGGCGC
 TGGCCTGGCTGCGTGGGACGGACGTCGATGTCCACTGGGAGTTCGAGCAGATCCAGGACAACGTCGGAG
 ACAGAGCAGCCGAGTATCGTGGGCTGAGGCACGGGCCCCACGTTGCCGGCCATCACCGTGGCCTTG
 CTGATGCGCCTCCTGCAGCAGCTGACGGGCATCAGCCCATCCTGGTCTACCTGCAGTCCATCTTCGACA
 GCACCGCTGTCTGCTGCCCCCAAGGACGACGACCCATCGTTGGGGCCGTGCGGCTCCTGTCCGTGCT
 GATCGCCGCCCTACCATGGACCTCGCAGGCCGAAGGTGCTGCTCTTCGTCTCAGCGCCATCATGTTT
 GCTGCCAACCTGACTCTGGGGCTGTACATCCACTTTGGCCCCAGGCCCTGAGCCCCAACAGCAGCTGCGG
 GCCTGGAAGCGAGTCTGGGGGACTTGGCCAGCCCCCTGGCAGCACCCGCTGGCTACCTCACCTGGTGGT
 GCCCTGCTGGCCACCATGCTCTTCATCATGGGCTACGCCGTGGGCTGGGGTCCCATCACCTGGCTGCTC
 ATGCTGAGGTCCTGCCCTGCGTGCCCGTGGCGTGGCCTCAGGGCTCTGCGTGTGCCAGCTGGCTCA
 CCGCCTTCGTCCTACCAAGTCCTTCTGCCAGTGGTGGACACCTTCGGCCTCCAGGTGCCTTTCTTCTT
 CTTCCGGGCCATCTGCTTGGTGGCCTGGTGTTCACAGGCTGCTGTGCCCGAGACCAAGGACGGTCC
 CTGGAGCAGATCGAGTCTTCTCCGCACGGGGAGAAGGTCTTCTTGCCG

ACGCGTACGCGGCCGCTCGAGCAGAACTCATCTCAGAAGAGGATCTGGCAGCAAATGATATCCTGGATT
 ACAAGGATGACGACGATAAGGTTTAA

Protein Sequence:

>RC204391 protein sequence
 Red=Cloning site Green=Tags(s)

MQEPLLGAEGPDYDTFPEKPPSPGDRARVGTLQNKRVFLATFAAVLGNFSFGYALVYVSPVIPALERSL
 DPDLHLTKSQSWFSGVFTLGAAAGGLSAMILNDLLGRKLSIMFSAVPSAAGYALMAGAHGLWMLLLGRT
 LTGFAGGLTAACIPVYVSEIAPPVVRGALGATPQLMAVFGSLSLYALGLLLPWRWLA VAGEAPVLMILL
 LSFMPNSPRFLLSRGRDEEALRALAWLRGTDVDVHWEFEQIQDNVRRQSSRVSWAEARAPHVCRPITVAL
 LMRLQLQITGIPILVYLQSIQIFDSTAVLLPPKDDAAIVGAVRLLSVLIAAL TMDLAGRKVLLFVSAAIMF
 AANLTGLYIHFGRPLSPNSTAGLESESWGDLAQPLAAPAGYLTLVPLLATMLFIMGYAVGWGPITWLL
 MSEVLP LRARGVASGLCVLASWLTAFVLTKSFLPVVSTFGLQVPFFFFAAICLVSLVFTGCCVPETKGRS
 LEQIESFFRTGRRSFLR

TRTRPLEQKLISEEDLAANDILDYKDDDDKV

Chromatograms:

https://cdn.origene.com/chromatograms/mk6025_a10.zip

Restriction Sites:

Sgfl-Mlul

Cloning Scheme:


ACCN: NM_017585

ORF Size: 1521 bp

OTI Disclaimer: The molecular sequence of this clone aligns with the gene accession number as a point of reference only. However, individual transcript sequences of the same gene can differ through naturally occurring variations (e.g. polymorphisms), each with its own valid existence. This clone is substantially in agreement with the reference, but a complete review of all prevailing variants is recommended prior to use. [More info](#)

OTI Annotation: This clone was engineered to express the complete ORF with an expression tag. Expression varies depending on the nature of the gene.

Components: The ORF clone is ion-exchange column purified and shipped in a 2D barcoded Matrix tube containing 10ug of transfection-ready, dried plasmid DNA (reconstitute with 100 ul of water).

- Reconstitution Method:**
1. Centrifuge at 5,000xg for 5min.
 2. Carefully open the tube and add 100ul of sterile water to dissolve the DNA.
 3. Close the tube and incubate for 10 minutes at room temperature.
 4. Briefly vortex the tube and then do a quick spin (less than 5000xg) to concentrate the liquid at the bottom.
 5. Store the suspended plasmid at -20°C. The DNA is stable for at least one year from date of shipping when stored at -20°C.

Note: Plasmids are not sterile. For experiments where strict sterility is required, filtration with 0.22um filter is required.

RefSeq: [NM_017585.4](#)

RefSeq Size: 2563 bp

RefSeq ORF: 1524 bp

Locus ID: 11182

UniProt ID: [Q9UGQ3](#)

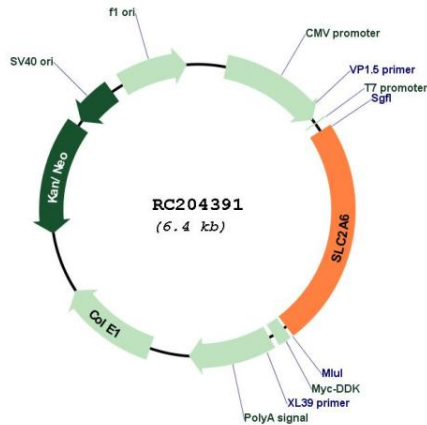
Cytogenetics: 9q34.2

Protein Families: Transmembrane

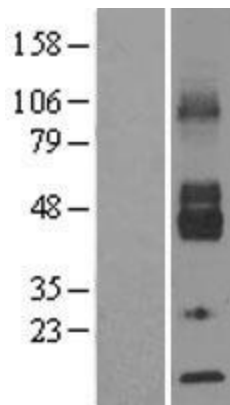
MW: 54.5 kDa

Gene Summary: Hexose transport into mammalian cells is catalyzed by a family of membrane proteins, including SLC2A6, that contain 12 transmembrane domains and a number of critical conserved residues.[supplied by OMIM, Jul 2002]

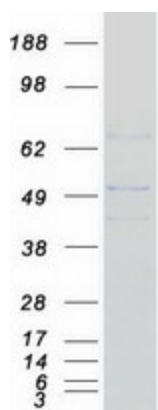
Product images:



Circular map for RC204391



Western blot validation of overexpression lysate (Cat# [LY402605]) using anti-DDK antibody (Cat# [TA50011-100]). Left: Cell lysates from untransfected HEK293T cells; Right: Cell lysates from HEK293T cells transfected with RC204391 using transfection reagent MegaTran 2.0 (Cat# [TT210002]).



Coomassie blue staining of purified SLC2A6 protein (Cat# [TP304391]). The protein was produced from HEK293T cells transfected with SLC2A6 cDNA clone (Cat# RC204391) using MegaTran 2.0 (Cat# [TT210002]).