

## Product datasheet for RC204389

### SAV1 (NM\_021818) Human Tagged ORF Clone

#### Product data:

Product Type:	Expression Plasmids
Product Name:	SAV1 (NM_021818) Human Tagged ORF Clone
Tag:	Myc-DDK
Symbol:	SAV1
Synonyms:	SAV; WW45; WWP4
Mammalian Cell Selection:	Neomycin
Vector:	pCMV6-Entry (PS100001)
E. coli Selection:	Kanamycin (25 ug/mL)
ORF Nucleotide Sequence:	>RC204389 ORF sequence Red=Cloning site Blue=ORF Green=Tags(s)

TTTTGTAATACGACTCACTATAGGGCGGCCGGAATTCGTCGACTGGATCCGGTACCGAGGAGATCTGCC  
GCC**CGATCGCC**

ATGCTGTCCCAGAAAGAAAACAAAAACGAAGTGTCCAAGCCGGCCGAGGTGCAGGGGAAGTACGTGAAGA  
AGGAGACGTGCGCTCTGCTTCGGAATCTTATGCCTTCATTCATCCGGCATGGTCCAACAATTCGAAGACG  
AACTGATATCTGTCTCCAGATTCAAGCCCTAATGCCTTTCACTTCTGGAGATGTAGTTTCAAGAAAC  
CAGAGTTTCTTAGAACTCCAATCAAAGAACACCTCATGAAATAATGAGAAGAGAAAGCAACAGATTAT  
CTGCACCTTCTTATCTTGCCAGAAGTCTAGCAGATGTCCCTAGAGAGTATGGTTCTTCTCAGTCATTTGT  
AACGGAAGTTAGTTTTGCTGTTGAAAATGGAGACTCTGGTTCCCGATATTATTATCAGACAATTTTTTT  
GATGGTCAGAGAAAGCGGCCACTTGAGATCGTGCACATGAAGACTACAGATATTATGAATACAACCATG  
ATCTCTTCCAAAGAAATGCCACAGAATCAGGGGAGGCATGCTTCAGGTATTGGGAGAGTTGCTGCTACATC  
TTAGGAAATTTGACTAACCATGGTTCTGAAGATTTACCCCTTCTCCTGGCTGGTCTGTGGACTGGACA  
ATGAGAGGGAGAAAAATATATAGATCATAACACAAATACAACCTCACTGGAGCCATCCTCTTGAGCGAG  
AAGGACTTCTCCTGGATGGGAACGAGTTGAGTCATCCGAATTTGGAACCTATTATGTAGATCACACAAA  
TAAGAAGGCCCAATACAGGCATCCCTGTCTCCTAGTGTACCTCGGTATGATCAACCACCTCCTGTCACA  
TACCAGCCACAGCAAACGTGAAAGAAATCAGTCCCTTCTGGTACCTGCAAATCCATATCATACTGCAGAAA  
TTCTGACTGGCTTCAGGTTTACGCACGAGCCCTGTGAAATATGACCACATTCTGAAGTGGGAACCTCTT  
CCAGCTGGCTGACCTGGATACATACCAGGGAATGCTAAAGTTGCTCTTATGAAAGAATTTGGAGCAGATT  
GTTAAATGTATGAAGCATAAGCAGCAAGCCCTTCTACAGAGTTGGAAAACCGAAAGCAGAGACAGCAGT  
GGTATGCCCAACAACATGGAAAAATTTT

**ACGCGT**ACGCGGCCGCTCGAGCAGAAACTCATCTCAGAAGAGGATCTGGCAGCAAATGATATCCTGGATT  
ACAAGGATGACGACGATAAGGTTTAA



[View online >](#)

**Protein Sequence:** >RC204389 protein sequence  
 Red=Cloning site Green=Tags(s)

MLSRKKTNEVSKPAEVQGKYVKKETSPLLRNLMPSPFIRHGPTIPRRTDICLPDSSPNAFSTSGDVVSRN  
 QSFLRTPIQRTPEIMRRESNRLSAPSYLARSLADVPREYGSSQSFVTEVSFAVENGDSGSRYYSDNFF  
 DGQRKRPLGDRAHEDYRYEYNHDLFQRMPQNQRGRHASGIRVAATSLGNLTNHGSEDLPLPPGWSVDWT  
 MRGRKYYIDHNTNTTWSHPLEREGLPGWVERVESSEFGTYVVDHTNKAQYRHPCAPSVPRYDQPPPVT  
 YQPQQTERNQSLLYPANPYHTAEIPDWLQVYARAPVKYDHIKWFELQLADLDTYQGMLKLLFMKELEQI  
 VKMYEAYRQALLTELENRQRQQWYAQQHGKNF

TRTRPLEQKLISEEDLAANDILDYKDDDDKV

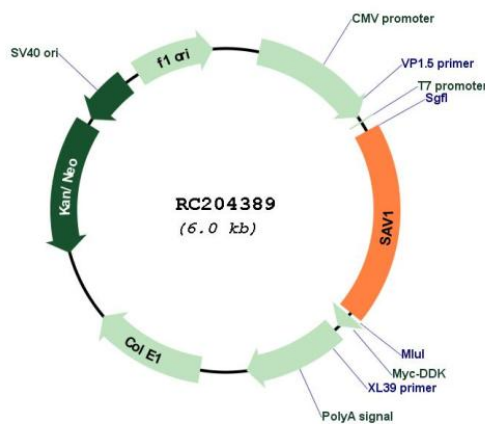
**Chromatograms:** [https://cdn.origene.com/chromatograms/mk6196\\_e09.zip](https://cdn.origene.com/chromatograms/mk6196_e09.zip)

**Restriction Sites:** SgfI-MluI

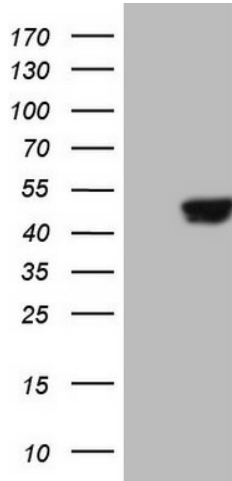
**Cloning Scheme:**



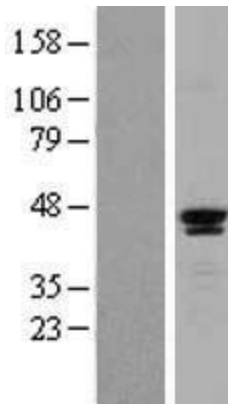
**Plasmid Map:**



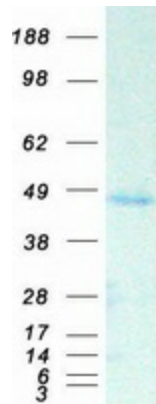
<b>ACCN:</b>	NM_021818
<b>ORF Size:</b>	1149 bp
<b>OTI Disclaimer:</b>	The molecular sequence of this clone aligns with the gene accession number as a point of reference only. However, individual transcript sequences of the same gene can differ through naturally occurring variations (e.g. polymorphisms), each with its own valid existence. This clone is substantially in agreement with the reference, but a complete review of all prevailing variants is recommended prior to use. <a href="#">More info</a>
<b>OTI Annotation:</b>	This clone was engineered to express the complete ORF with an expression tag. Expression varies depending on the nature of the gene.
<b>Components:</b>	The ORF clone is ion-exchange column purified and shipped in a 2D barcoded Matrix tube containing 10ug of transfection-ready, dried plasmid DNA (reconstitute with 100 ul of water).
<b>Reconstitution Method:</b>	<ol style="list-style-type: none"><li>1. Centrifuge at 5,000xg for 5min.</li><li>2. Carefully open the tube and add 100ul of sterile water to dissolve the DNA.</li><li>3. Close the tube and incubate for 10 minutes at room temperature.</li><li>4. Briefly vortex the tube and then do a quick spin (less than 5000xg) to concentrate the liquid at the bottom.</li><li>5. Store the suspended plasmid at -20°C. The DNA is stable for at least one year from date of shipping when stored at -20°C.</li></ol>
<b>RefSeq:</b>	<a href="#">NM_021818.4</a>
<b>RefSeq Size:</b>	3141 bp
<b>RefSeq ORF:</b>	1152 bp
<b>Locus ID:</b>	60485
<b>UniProt ID:</b>	<a href="#">Q9H4B6</a>
<b>Cytogenetics:</b>	14q22.1
<b>Domains:</b>	WW
<b>MW:</b>	44.6 kDa
<b>Gene Summary:</b>	WW domain-containing proteins are found in all eukaryotes and play an important role in the regulation of a wide variety of cellular functions such as protein degradation, transcription, and RNA splicing. This gene encodes a protein with two WW domains, a SARAH domain, and a coiled-coil region and is ubiquitously expressed in adult tissues. This protein binds to MST1 (mammalian sterile 20-like kinase 1) and promotes MST1-induced apoptosis. It has also been shown to bind to HAX1 (hematopoietic cell-specific protein 1 (HS1)-associated protein X-1) and to attenuate the anti-apoptotic effects of HAX1. Studies in human and mouse suggest this gene acts as a tumor suppressor. [provided by RefSeq, Aug 2012]

**Product images:**


HEK293T cells were transfected with the pCMV6-ENTRY control (Cat# [PS100001], Left lane) or pCMV6-ENTRY SAV1 (Cat# RC204389, Right lane) cDNA for 48 hrs and lysed. Equivalent amounts of cell lysates (5 ug per lane) were separated by SDS-PAGE and immunoblotted with anti-SAV1 (Cat# [TA804764]). Positive lysates [LY402881] (100ug) and [LC402881] (20ug) can be purchased separately from OriGene.



Western blot validation of overexpression lysate (Cat# [LY402881]) using anti-DDK antibody (Cat# [TA50011-100]). Left: Cell lysates from untransfected HEK293T cells; Right: Cell lysates from HEK293T cells transfected with RC204389 using transfection reagent MegaTran 2.0 (Cat# [TT210002]).



Coomassie blue staining of purified SAV1 protein (Cat# [TP304389]). The protein was produced from HEK293T cells transfected with SAV1 cDNA clone (Cat# RC204389) using MegaTran 2.0 (Cat# [TT210002]).