

Product datasheet for **RC204383**

ZDHHC11 (NM_024786) Human Tagged ORF Clone

Product data:

Product Type:	Expression Plasmids
Product Name:	ZDHHC11 (NM_024786) Human Tagged ORF Clone
Tag:	Myc-DDK
Symbol:	ZDHHC11
Synonyms:	ZNF399
Mammalian Cell Selection:	Neomycin
Vector:	pCMV6-Entry (PS100001)
E. coli Selection:	Kanamycin (25 ug/mL)
ORF Nucleotide Sequence:	>RC204383 ORF sequence Red=Cloning site Blue=ORF Green=Tags(s)

TTTTGTAATACGACTCACTATAGGGCGGCCGGAATTCGTCGACTGGATCCGGTACCGAGGAGATCTGCC
GCC**CGATCGCC**

ATGGACACCCGCTCCGGGAGCCAGTGTTCCGTCACCCAGAAGCCATACTCAATAATGAAAAGCTGGTCT
TGCCGCCCCGCATCTCCAGAGTGAACGGCTGGTCGTTACCCCTGCACTACTTCCAGGTGGTGACCTGGGC
TGTCTTCGTGGGCCTTCTCGGCCACCTTCGGGATCTTCATTCCCTTCTGCCTCACGCGTGAAATAC
ATTGCCTACGTGGTGACCGGGGGATCTTCTCGTTCACCTCGTCCACCTGATCGCGTCTGCATCG
ACCCGGCCGACTCCAATGTCAGACTCATGAAGAACTATTCTCAGCCCATGCCCTCTTCGACAGATCAAA
ACATGCACACGTGATCCAGAATCAGTTCGCCACCTGTGCAAGGTACCGTGAACAAGAAAACCAACAC
TGCATTTCTGCAATAAGTGTGTGCCGCTTCGACCACCACTGCAATGGATCAACAACCTGCGTGGGAA
GCCGGAATTATTGGTTCTTCTCAGCACTGTGGCTCGGCCACAGCTGGCATGCTCTGCCTGATCGCCAT
CCTGCTGTATGTCCTCGTCCAGTACCTCGTGAACCCCGGGGTGCTCCGCACGGACCCAGGTATGAAGAT
GTCAAGAATATGAACACGTGGTGTCTGTTCTCCCTGTTCCCGGTGCAGGTGCAGACCCCTGATAGTCG
TGATCATCGGGATGCTCGTGCTCCTGCTGGACTTCTTGGCTTGGTGCACCTGGGCCAGCTGCTCATCTT
CCACATCTACCTGAAGGCCAAGAAGATGACCACCTTTGAGTATCTCATTAAATAACCGCAAAGAAGAGAT
TCAAAACATCAAGCAGTGAGGAAAGATCCATACGTGCAAAATGGACAAAGGAGTTCTCCAGCAAGGAGCTG
GGCCCTGGGCTCATCTGCACAGGGAGTCAAAGCCAAGAGCTCCCTGCTGATTCAAGCACTTATGTCA
CTTCTGCACTTACGTAACCAGGATGGGATTTCGACGGCACGGGAAGGGATGAAGACCCGTGTCCATCT
GCACTTGGAGCCAAGGCCAGGAACCTCCCGCTGATTTGCAGGCGCCTGTGTGAGTTCTCCACTCGTGTAC
ACCCAGACGGGGCTCGATGGCACAGGAAGCAGATGATGCCCCGAGTATATCTACACTTGGGCTGCAACA
AGAAACAACAGAGCCCATGAAAACCTGACAGTGTGAAAGTGAAGAC

AG**CGGACCG**ACGCGTACGCGGCCGCTCGAGCAGAAACTCATCTCAGAAGAGGATCTGGCAGCAAATGATATCC
TGGATTACAAGGATGACGACGATAAGGTTTAA



[View online »](#)

Protein Sequence: >RC204383 protein sequence
Red=Cloning site Green=Tags(s)

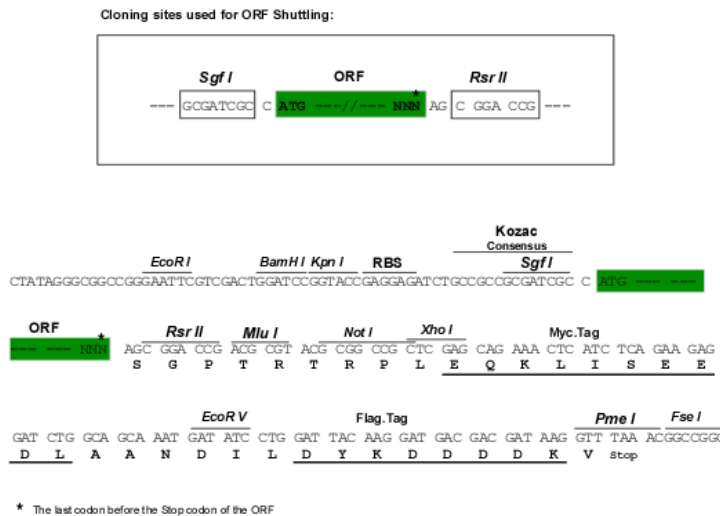
MDTRSGSQCSVTPEAILNNEKLVLPPIRSRVNGWSLPLHYFQVVTWAVFVGLSSATFGIFIPFLPHAWKY
 IAYVVTGGIFSFHLVVHLIASCIDPADSNVRLMKNYSQPMPLFDRSKHAHVIQNQFCHLCKVTVNKTKH
 CISCNKCVSGFDHCKWINNCVGSRNYWFFFSTVASATAGMLCLIAILLVYLQYLVNPGVLRDTPRYED
 VKNMNTWLLFLPLFPVQVQTLIVVIIGMLVLLLDLFLGLVHLGQLLIFHIYLKAKKMTTFEYLINNRKEES
 SKHQAVRKDPYVQMDKGVLQQGAGALGSSAQGVKAKSSLLIHKHLCHFCTSVNQDGDSTAREGDEDP
 ALGAKARNSRLICRRLCQFSTRVHPDGGSMQAQADDAPSISTLGLQQETTEPMKTDSEAISED

SGPTRTRPLEQKLI SEEDLAANDILDYKDDDDKV

Chromatograms: https://cdn.origene.com/chromatograms/mk6619_b03.zip

Restriction Sites: SgfI-RsrII

Cloning Scheme:



ACCN: NM_024786

ORF Size: 1236 bp

OTI Disclaimer: The molecular sequence of this clone aligns with the gene accession number as a point of reference only. However, individual transcript sequences of the same gene can differ through naturally occurring variations (e.g. polymorphisms), each with its own valid existence. This clone is substantially in agreement with the reference, but a complete review of all prevailing variants is recommended prior to use. [More info](#)

OTI Annotation: This clone was engineered to express the complete ORF with an expression tag. Expression varies depending on the nature of the gene.

Components: The ORF clone is ion-exchange column purified and shipped in a 2D barcoded Matrix tube containing 10ug of transfection-ready, dried plasmid DNA (reconstitute with 100 ul of water).

Reconstitution Method:

1. Centrifuge at 5,000xg for 5min.
2. Carefully open the tube and add 100ul of sterile water to dissolve the DNA.
3. Close the tube and incubate for 10 minutes at room temperature.
4. Briefly vortex the tube and then do a quick spin (less than 5000xg) to concentrate the liquid at the bottom.
5. Store the suspended plasmid at -20°C. The DNA is stable for at least one year from date of shipping when stored at -20°C.

Note: Plasmids are not sterile. For experiments where strict sterility is required, filtration with 0.22um filter is required.

RefSeq: [NM_024786.2](#)

RefSeq Size: 2618 bp

RefSeq ORF: 1239 bp

Locus ID: 79844

UniProt ID: [Q9H8X9](#)

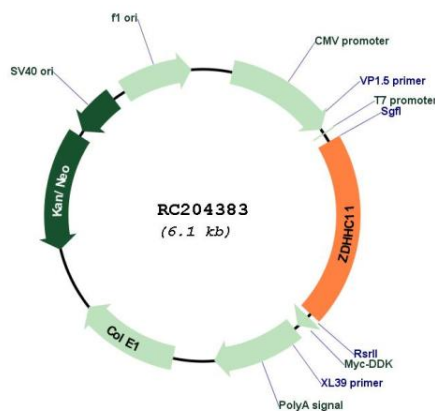
Cytogenetics: 5p15.33

Protein Families: Transmembrane

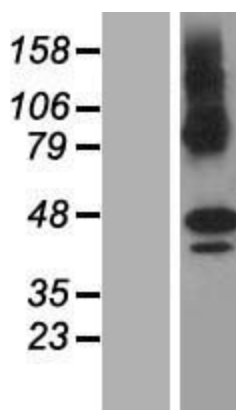
MW: 46 kDa

Gene Summary: Endoplasmic reticulum-localized palmitoyltransferase that could catalyze the addition of palmitate onto various protein substrates and be involved in a variety of cellular processes (By similarity). Has a palmitoyltransferase activity toward NCDN and regulates NCDN association with endosome membranes through this palmitoylation (By similarity). May play a role in cell proliferation (PubMed:28331227).[UniProtKB/Swiss-Prot Function]

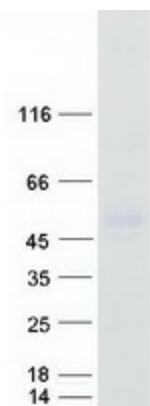
Product images:



Circular map for RC204383



Western blot validation of overexpression lysate (Cat# [LY411048]) using anti-DDK antibody (Cat# [TA50011-100]). Left: Cell lysates from untransfected HEK293T cells; Right: Cell lysates from HEK293T cells transfected with RC204383 using transfection reagent MegaTran 2.0 (Cat# [TT210002]).



Coomassie blue staining of purified ZDHHC11 protein (Cat# [TP304383]). The protein was produced from HEK293T cells transfected with ZDHHC11 cDNA clone (Cat# RC204383) using MegaTran 2.0 (Cat# [TT210002]).