

Product datasheet for RC204372

CALML5 (NM_017422) Human Tagged ORF Clone

Product data:

Product Type: Expression Plasmids
Product Name: CALML5 (NM_017422) Human Tagged ORF Clone
Tag: Myc-DDK
Symbol: CALML5
Synonyms: CLSP
Vector: pCMV6-Entry (PS100001)
E. coli Selection: Kanamycin (25 ug/mL)
Cell Selection: Neomycin
ORF Nucleotide Sequence: >RC204372 ORF sequence
Red=Cloning site Blue=ORF Green=Tags(s)

TTTTGTAATACGACTCACTATAGGGCGCCGGGAATTCGTCGACTGGATCCGGTACCGAGGAGATCTGCC
GCC**CGGATCGCC**

ATGGCCGGTGAGCTGACTCCTGAGGAGGAGGCCAGTACAAAAAGGCTTCTCCGCGTTGACACGGATG
GAAACGGCACCATCAATGCCAGGAGCTGGCGCGGCGCTGAAGGCCACGGGCAAGAACCTCTCGGAGGC
CCAGCTAAGGAACTCATCTCCGAGTTGACGGCGACGGCGACGGCGAAATCAGCTTCCAGGAGTTCCTG
ACGGCGGCAAGGAAGGCCAGGGCCGGCCTGGAGGACCTGCAGGTCGCCTTCCGCGCCTTCGACCAGGATG
GCGACGGCCACATCACCGTGGACGAGCTCAGGCGGGCCATGGCGGGGCTGGGGCAGCCGCTGCCGAGGA
GGAGCTGGACGCCATGATCCGCGAGGCCGACGTGGACCAGGACGGGCGGGTGAACACGAGGAGTTCGCG
AGGATGCTCGCCAGGAG

ACGCGTACGCGGCCGCTCGAGCAGAACTCATCTCAGAAGAGGATCTGGCAGCAAATGATATCCTGGATT
ACAAGGATGACGACGATAAGGTTTAA

Protein Sequence: >RC204372 protein sequence
Red=Cloning site Green=Tags(s)
MAGELTPEEEAQYKKAFAVDTDNGTINAQELGAALKATGKNLSEAQLRKLISEVDGDGDGEISFQEFLL
TAARKARAGLEDLQVAFRAFDQDGDGHIIVDELRRAMAGLGQPLPQEELDAMIREADVDDQGRVNYEEFA
RMLAQE

TRTRPLEQKLISEEDLAANDILDYKDDDDKV

Chromatograms: https://cdn.origene.com/chromatograms/mk6522_f05.zip

Restriction Sites: Sgfl-Mlul

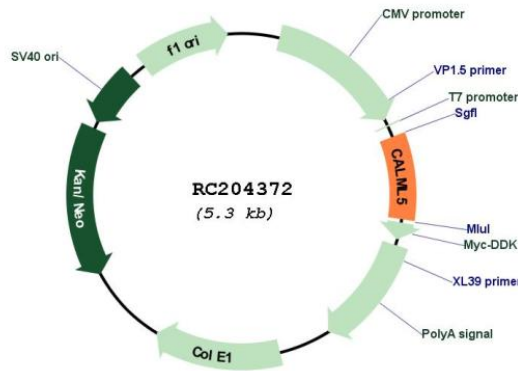


[View online »](#)

Cloning Scheme:



Plasmid Map:



ACCN: NM_017422

ORF Size: 438 bp

OTI Disclaimer: The molecular sequence of this clone aligns with the gene accession number as a point of reference only. However, individual transcript sequences of the same gene can differ through naturally occurring variations (e.g. polymorphisms), each with its own valid existence. This clone is substantially in agreement with the reference, but a complete review of all prevailing variants is recommended prior to use. [More info](#)

OTI Annotation: This clone was engineered to express the complete ORF with an expression tag. Expression varies depending on the nature of the gene.

RefSeq: [NM_017422.5](#)

RefSeq Size: 893 bp

RefSeq ORF: 441 bp

Locus ID: 51806

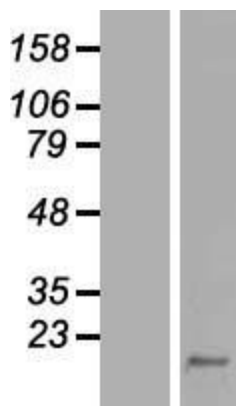
UniProt ID: [Q9NZT1](#), [Q53H37](#)

Protein Pathways: Alzheimer's disease, Calcium signaling pathway, Glioma, GnRH signaling pathway, Insulin signaling pathway, Long-term potentiation, Melanogenesis, Neurotrophin signaling pathway, Olfactory transduction, Oocyte meiosis, Phosphatidylinositol signaling system, Vascular smooth muscle contraction

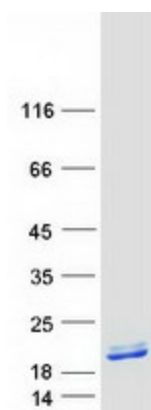
MW: 15.9 kDa

Gene Summary: This gene encodes a novel calcium binding protein expressed in the epidermis and related to the calmodulin family of calcium binding proteins. Functional studies with recombinant protein demonstrate it does bind calcium and undergoes a conformational change when it does so. Abundant expression is detected only in reconstructed epidermis and is restricted to differentiating keratinocytes. In addition, it can associate with transglutaminase 3, shown to be a key enzyme in the terminal differentiation of keratinocytes. [provided by RefSeq, Jul 2008]

Product images:



Western blot validation of overexpression lysate (Cat# [LY413780]) using anti-DDK antibody (Cat# [TA50011-100]). Left: Cell lysates from untransfected HEK293T cells; Right: Cell lysates from HEK293T cells transfected with RC204372 using transfection reagent MegaTran 2.0 (Cat# [TT210002]).



Coomassie blue staining of purified CALML5 protein (Cat# [TP304372]). The protein was produced from HEK293T cells transfected with CALML5 cDNA clone (Cat# RC204372) using MegaTran 2.0 (Cat# [TT210002]).