

Product datasheet for RC204370

SCAND1 (NM_016558) Human Tagged ORF Clone

Product data:

Product Type: Expression Plasmids
Product Name: SCAND1 (NM_016558) Human Tagged ORF Clone
Tag: Myc-DDK
Symbol: SCAND1
Synonyms: RAZ1; SDP1
Mammalian Cell Selection: Neomycin
Vector: pCMV6-Entry (PS100001)
E. coli Selection: Kanamycin (25 ug/mL)
ORF Nucleotide Sequence: >RC204370 ORF sequence
 Red=Cloning site Blue=ORF Green=Tags(s)

TTTTGTAATACGACTCACTATAGGGCGGCCGGAATTCGTCGACTGGATCCGGTACCGAGGAGATCTGCC
 GCC**CGATCGCC**

ATGGCGGCTACGGAGCCGATCTTGGCGGCCACTGGGAGTCCCAGCGCGGTGCCACCGGAGAACTGGAAG
 GAGCCGGTTCGAGCTCAGCCCCTGAGCGTAACTGTGTGGGCTCCTCGCTGCCAGAGGCCTCACCGCTGC
 CCCTGAGCCTCCAGTCCAACGCGCGGTCCCTGAAGCCATCCCTACGCCCCGAGCTGCGGCCTCCGCG
 GCCCTGGAGCTGCCTCTCGGGCCCGCACCCGTGAGCGTAGCGCCTCAGGCCGAAGCTGAAGCGCGTCCA
 CACCAGGCCCGCGGCTCTAGACTCGTCCCAGACGTTCCGCCAGCGTTCCGGCAGTCCGCTACCA
 GGATGCGGCGGTCCCCGGGAGGCTTCCGGCAGCTGCGGGAGCTGTCCCGCCAGTGGCTGCGGCCTGAC
 ATCCGCACCAAGGAGCAGATCGTGGAGATGCTGGTGAAGAGCAGCTGCTCGCCATCCTGCCGAGGCGG
 CTCGGGCCCGGGATCCGCCGCCACGGATGTGCGCATCACTGGC

ACGCGTACGCGGCCGCTCGAGCAGAACTCATCTCAGAAGAGGATCTGGCAGCAAATGATATCCTGGATT
 ACAAGGATGACGACGATAAGGTTTAA

Protein Sequence: >RC204370 protein sequence
 Red=Cloning site Green=Tags(s)

MAATEPILAAATGSPAAPPEKLEGAGSSSAPERNCVSSSLPEASPPAPEPSSPNAAVPEAIPTPRAAASA
 ALELPLGPAPVSVAPQAEAEARSTPGPAGSRLGPETFRQRFQFRYQDAAGPREAFRQLREL SRQWLRPD
 IRTKEQIVEMLVQEQLLAILPEAARARRIRRRTDVRITG

TRTRPLEQKLISEEDLAANDILDYKDDDDKV

Chromatograms: https://cdn.origene.com/chromatograms/mk6394_e05.zip



Restriction Sites: SgfI-MluI

Cloning Scheme:



ACCN: NM_016558

ORF Size: 537 bp

OTI Disclaimer: The molecular sequence of this clone aligns with the gene accession number as a point of reference only. However, individual transcript sequences of the same gene can differ through naturally occurring variations (e.g. polymorphisms), each with its own valid existence. This clone is substantially in agreement with the reference, but a complete review of all prevailing variants is recommended prior to use. [More info](#)

OTI Annotation: This clone was engineered to express the complete ORF with an expression tag. Expression varies depending on the nature of the gene.

Components: The ORF clone is ion-exchange column purified and shipped in a 2D barcoded Matrix tube containing 10ug of transfection-ready, dried plasmid DNA (reconstitute with 100 ul of water).

Reconstitution Method:

1. Centrifuge at 5,000xg for 5min.
2. Carefully open the tube and add 100ul of sterile water to dissolve the DNA.
3. Close the tube and incubate for 10 minutes at room temperature.
4. Briefly vortex the tube and then do a quick spin (less than 5000xg) to concentrate the liquid at the bottom.
5. Store the suspended plasmid at -20°C. The DNA is stable for at least one year from date of shipping when stored at -20°C.

Note: Plasmids are not sterile. For experiments where strict sterility is required, filtration with 0.22um filter is required.

RefSeq: [NM_016558.3](#)

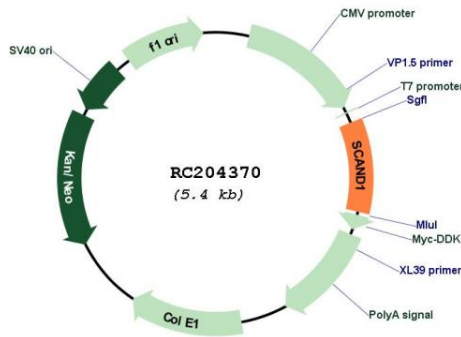
RefSeq Size: 1388 bp

RefSeq ORF: 540 bp

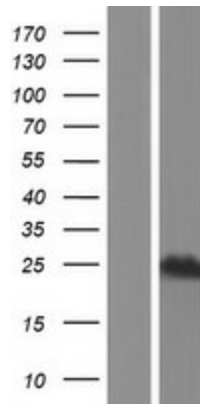
Locus ID: 51282
UniProt ID: [P57086](#)
Cytogenetics: 20q11.23
Domains: LER
Protein Families: Transcription Factors
MW: 19.1 kDa

Gene Summary: This gene encodes a SCAN box domain-containing protein. The SCAN domain is a highly conserved, leucine-rich motif of approximately 60 aa originally found within a subfamily of zinc finger proteins. This gene belongs to a family of genes that encode an isolated SCAN domain, but no zinc finger motif. This protein binds to and may regulate the function of the transcription factor myeloid zinc finger 1B. Alternate splicing results in multiple transcript variants.[provided by RefSeq, Jan 2011]

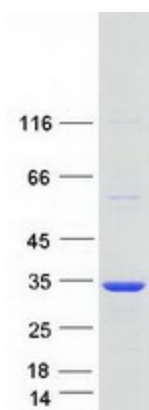
Product images:



Circular map for RC204370



Western blot validation of overexpression lysate (Cat# [LY413912]) using anti-DDK antibody (Cat# [TA50011-100]). Left: Cell lysates from untransfected HEK293T cells; Right: Cell lysates from HEK293T cells transfected with RC204370 using transfection reagent MegaTran 2.0 (Cat# [TT210002]).



Coomassie blue staining of purified SCAND1 protein (Cat# [TP304370]). The protein was produced from HEK293T cells transfected with SCAND1 cDNA clone (Cat# RC204370) using MegaTran 2.0 (Cat# [TT210002]).