

Product datasheet for RC204364

ZNF485 (NM_145312) Human Tagged ORF Clone

Product data:

Product Type:	Expression Plasmids
Product Name:	ZNF485 (NM_145312) Human Tagged ORF Clone
Tag:	Myc-DDK
Symbol:	ZNF485
Mammalian Cell Selection:	Neomycin
Vector:	pCMV6-Entry (PS100001)
E. coli Selection:	Kanamycin (25 ug/mL)
ORF Nucleotide Sequence:	>RC204364 ORF sequence Red=Cloning site Blue=ORF Green=Tags(s)

TTTTGTAATACGACTCACTATAGGGCGGCCGGAATTCGTCGACTGGATCCGGTACCGAGGAGATCTGCC
GCCCGATCGCC

ATGCTGGAGAAGCTATGGGAATCTGGTGTCTGTGGGGCTTCTCTTCCAAACAAAATAATTACTCAGT
TGGAGCAAGGGGAGAGCCCTGGACTGAGGTGCGAGAGGCTCCATCAGGCACACATGCAGTCGAGGATTA
CTGGTTTGAACAAAGATGTCAGCCCTAAAGCAAAGCACTTCTGAAGCATCCGTTCTGGGAGAGCGAACG
AAAAGTGCATGATGGAAAAGGCTGGACTGGGAGGGCAGAAGCTCCACAGAGAAGAATAAAGTGA
AGGAATGTGGGAAAGCTTCAAATACAATTCGTCCTTTATTAGCCACCAGAGAAAATCACACCAGTGAGAA
ACCACATAAATGTAAGAATGTGGGATCGCCTTTATGAACAGTTTCATCCCTTTTAAATCACCATAAGGTT
CATGCAGGCAAACAGCCTTATAGATGTATTGAATGTGGGAAGTTCCTGAAGAAGCACTCAACGTTTATCA
ACCATCAGAGAATTCATTCTAGGGAGAAACCCACAAATGCATTGAATGTGGAAAACTTTCAGAAAAGAA
CTCAATCCTTTAAGTCATCAGAGAATTCATACTGGCCAGAAACCTACAAATGTAATGACTGTGGGAAA
GCCTTCGCTCAGAATGCAGCTTACTCGTCATGAAAGAATACATAGTGGAGAGAAGCCTTTTAAATGTA
ACAAGTGTGGGAGAGCTTTCAGGATAATTCAACTGTGTGGAACATCAGAAAATCCATACTGGTGAGAA
GCCATATCAGTGAATGAATGTGGAAAAGCCTTTAGGAAGAGCTCAACTCTTATTAGTACCAAAGAATG
CATACTGGGAGAAAACCTATCACTGCAGTAAATGTGGAAAATCTTTCAGGTATAGTCTATCCTTTGCTG
GTATCAGAAAATCACAGTGGAAATAAACCGTATCAGTGTCTGACTGTGGGAAGGCCTTTACAAAAGAG
CTCAACCCCTTACTGGACATCAGAGAATTCATACTGGAGAAAAACCTATCACTGTAAAGAAATGTGGGAAA
GCCTTTCGGCACAGCTCAGGCCTTGTGTAACATCAGAGACTCCATACTGGGGAAAAACCTTATAAATGTA
ATGAATGTGGGAAAGCTTTCCCGAAGTTCAGCCCTTAAGCAACATAAGAAAATTCATAATAAGAAAAG
AGCCATGAAATGTAGT

ACGCGTACGCGGCCGCTCGAGCAGAAAACCTCATCTCAGAAGAGGATCTGGCAGCAATGATATCCTGGATT
ACAAGGATGACGACGATAAGGTTTAA



[View online »](#)

Protein Sequence: >RC204364 protein sequence
Red=Cloning site Green=Tags(s)

MLENYGNLVSVGLLSSPKLITQLEQGAEPWTEVREAPSGTHAVEDYWFETKMSALKQSTSEASVLGERT
 KSVMMEKGLDWEGRSSTEKNYKCECGKVFYKYNSSFISHQRNHTSEKPHKCECGIAFMNSSLLNHHKV
 HAGKQPYRCIECGKFLKKHSTFINHQRIHSREKPHKCECGKTFRKNISILLSHQRIHTGQKPYKCNDCGK
 AFAQNAALTRHERIHSGEKPFKCNKCGRAFRDNSTVLEHQKIHTGEKPYQCNECGKAFRKSSTLISHQRM
 HTGEKPYHCSKCGKSFYSSSFAGHQKTHSGNKPYQCRDCGKAFTKSSTLTGHQRIHTGEKPYHCKKCGK
 AFRHSSGLVEHQRLHTGEKPYKCNECGKAFPRSSALKQHKKIHNKERAMKCS

TRTRPLEQKLISEEDLAANDILDYKDDDDKV

Chromatograms: https://cdn.origene.com/chromatograms/mk6580_d12.zip

Restriction Sites: SgfI-MluI

Cloning Scheme:

Cloning sites used for ORF Shuttling:



* The last codon before the Stop codon of the ORF

ACCN: NM_145312

ORF Size: 1206 bp

OTI Disclaimer: The molecular sequence of this clone aligns with the gene accession number as a point of reference only. However, individual transcript sequences of the same gene can differ through naturally occurring variations (e.g. polymorphisms), each with its own valid existence. This clone is substantially in agreement with the reference, but a complete review of all prevailing variants is recommended prior to use. [More info](#)

OTI Annotation: This clone was engineered to express the complete ORF with an expression tag. Expression varies depending on the nature of the gene.

Components: The ORF clone is ion-exchange column purified and shipped in a 2D barcoded Matrix tube containing 10ug of transfection-ready, dried plasmid DNA (reconstitute with 100 ul of water).

Reconstitution Method:

1. Centrifuge at 5,000xg for 5min.
2. Carefully open the tube and add 100ul of sterile water to dissolve the DNA.
3. Close the tube and incubate for 10 minutes at room temperature.
4. Briefly vortex the tube and then do a quick spin (less than 5000xg) to concentrate the liquid at the bottom.
5. Store the suspended plasmid at -20°C. The DNA is stable for at least one year from date of shipping when stored at -20°C.

Note: Plasmids are not sterile. For experiments where strict sterility is required, filtration with 0.22um filter is required.

RefSeq: [NM_145312.2](#), [NP_660355.1](#)

RefSeq Size: 2072 bp

RefSeq ORF: 1326 bp

Locus ID: 220992

UniProt ID: [Q8NCK3](#)

Cytogenetics: 10q11.21

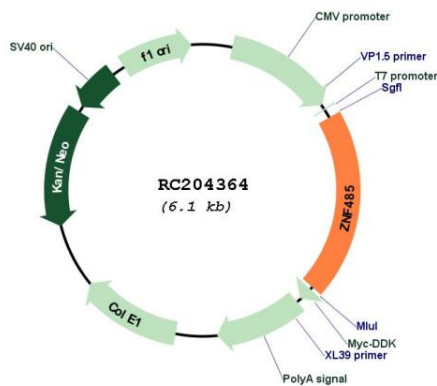
Domains: zf-C2H2

Protein Families: Transcription Factors

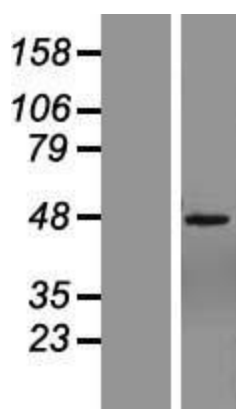
MW: 45.9 kDa

Gene Summary: May be involved in transcriptional regulation.[UniProtKB/Swiss-Prot Function]

Product images:



Circular map for RC204364



Western blot validation of overexpression lysate (Cat# [LY407959]) using anti-DDK antibody (Cat# [TA50011-100]). Left: Cell lysates from untransfected HEK293T cells; Right: Cell lysates from HEK293T cells transfected with RC204364 using transfection reagent MegaTran 2.0 (Cat# [TT210002]).