

## Product datasheet for **RC204356**

### **NAPRT1 (NAPRT) (NM\_145201) Human Tagged ORF Clone**

#### **Product data:**

Product Type:	Expression Plasmids
Product Name:	NAPRT1 (NAPRT) (NM_145201) Human Tagged ORF Clone
Tag:	Myc-DDK
Symbol:	NAPRT1
Synonyms:	NAPRT1; PP3856
Mammalian Cell Selection:	Neomycin
Vector:	pCMV6-Entry (PS100001)
E. coli Selection:	Kanamycin (25 ug/mL)



[View online »](#)

**ORF Nucleotide Sequence:**

>RC204356 representing NM\_145201  
 Red=Cloning site Blue=ORF Green=Tags(s)

TTTTGTAATACGACTCACTATAGGGCGGCCGGGAATTCGTCGACTGGATCCGGTACCGAGGAGATCTGCC  
 GCC**CGCATCGCC**

ATGGCGTTGGGCTATTGGCGCGCGGGCCGGGCGGGACGCCCGGAGTTCGAGCTTCTTCCGCCGCT  
 GCCCGTTTCGGCGCGCCTTCGCCTTGGCCGCGGCTTGCAGACTGTGTGCGCTTCTGCAGCCTTCCG  
 CCTGCGGGACGCCGACGTGCAGTTCCTGCCTCGGTGCTGCCCCAGACACGGATCCTGCGTTCTTCGAG  
 CACCTTCGGGCCCTCGACTGCTCCGAGGTGACGGTGCAGCCCTGCCGAGGGCTCCCTCGCCTTCCCCG  
 GAGTGCCGCTCCTGCAGGTGTCCGGGCCCTCCTGGTGGTGCAGCTGCTGGAGACACCGCTGCTCTGCCT  
 GGTGAGTACGCCAGCCTGGTGGCCACCAACGCAGCGCGGCTTCGCTTATCGCAGGGCCAGAGAAGCGG  
 CTGCTAGAGATGGCCTGAGGCGGGCTCAGGGCCCGATGGGGCCCTGACAGCCTCCACCTACAGCTACC  
 TGGGCGGCTTCGACAGCAGCAACGTGCTAGCGGGCCAGCTGCGAGGTGTGCCGTGGCCGGACCT  
 GGCCACTCCTTGTCACTTCTTTTCAGGCAGCGAGGTGCCCTGACCCGATGTTGGCCAGCAGCT  
 GGTGAGGGCCCTGGGGTGGACCTGGCGGCCAAAGCCAGGTGTGGCTGGAGCAGGTGTGTGCCACCTGG  
 GGCTGGGGTGCAGGAGCCGCATCCAGGCGAGCGGGCAGCCTTTGTGGCTATGCCTTGGCTTTTCCCCG  
 GGCTTCCAGGGCCTCCTGGACCTACAGCGTGTGGAGGAGTGGTCTCCCAACTTCTAGCAGTCGCC  
 TTGGCCCTGGGAGAGCTGGGCTACCGGGCAGTGGGCGTGAAGCTGGACAGTGGTACCTGCTACAGCAGG  
 CTCAGGAGATCCGCAAGTCTTCCGAGCTGCTGCAGCCAGTTCAGGTGCCCTGGCTGGAGTCACTCT  
 CATCGTAGTCAGCAACAATTGACGAGGAGGCGCTGGCCGACTGGCCAGGAGGCGAGTGAAGTGAAT  
 GTCATTGGCATTGGCACCAGTGTGGTCACTGCCCAACAGCCTTCCCTGGGTGGCGTCTATAAGCTGG  
 TGGCCGTGGGGGCCAGCCACGAATGAAGCTGACCGAGGACCCGAGAAGCAGACGTTGCCTGGGAGCAA  
 GGCTGCTTCCGGCTCCTGGGCTGACGGGCTCCCACTCATGGACATGCTGCAGTTAGCAGAAGAGCCA  
 GTGCCACAGGCTGGGAGGAGCTGAGGGTGTGGCTCCAGGGGCCAGGAGCCCTGCACCGTGAAGCCAG  
 CCCAGGTGGAGCCACTACTGCGGCTGCTCCTCCAGCAGGGACAGGTGGCTGCCCAACCGCCCTATCC

**ACGCGT**ACGCGGCCGCTCGAGCAGAACTCATCTCAGAAGAGGATCTGGCAGCAAATGATATCCTGGATT  
 ACAAGGATGACGACGATAAGGTTTAA

**Protein Sequence:**

>RC204356 representing NM\_145201  
 Red=Cloning site Green=Tags(s)

MALGYWRAGRARDAAEFELFFRRCPFGGAFALAAGLRDVCVRFRAFRLRDADVQFLASVLPDTPAFFE  
 HLRALDCSEVTVRALPEGLAFPGVPLLQVSGPLLVVQLLETPLLCLVSYASLVATNAARLRLIAGPEKR  
 LLEMGLRRAQGPDGGLTASTYSYLGFDSSNVLQGLRGVVPVAGTLAHSFVTSFSGSEVPPDMLAPAA  
 GEGPGVDLAAKAQVWLEQVCAHLGLGVQEPHPGERAAAFVAYALAFPRAFQGLLDITYSVWRSGLPNFLAVA  
 LALGELGYRAVGVRLDSGDLQQAQEIIRKVFRAAAQFQVPWLESVLIIVSNNIDEALARLAQEGSEVN  
 VIGIGTSVVTCPQQPSLGGVYKLVAVGGQPRMKTEDPEKQTLPGSKAAFRLGSDGSPLMDMLQLAEEP  
 VPQAGQELRVWPPGAQEPCTVRPAQVEPLLRLCLQQGQVAAPPPSS

**TR**TRPLEQKLISEEDLAANDILDYKDDDDKV

**Chromatograms:**

[https://cdn.origene.com/chromatograms/mk6128\\_b12.zip](https://cdn.origene.com/chromatograms/mk6128_b12.zip)

**Restriction Sites:**

Sgfl-MluI

**Cloning Scheme:**


**ACCN:** NM\_145201

**ORF Size:** 1398 bp

**OTI Disclaimer:** The molecular sequence of this clone aligns with the gene accession number as a point of reference only. However, individual transcript sequences of the same gene can differ through naturally occurring variations (e.g. polymorphisms), each with its own valid existence. This clone is substantially in agreement with the reference, but a complete review of all prevailing variants is recommended prior to use. [More info](#)

**OTI Annotation:** This clone was engineered to express the complete ORF with an expression tag. Expression varies depending on the nature of the gene.

**Components:** The ORF clone is ion-exchange column purified and shipped in a 2D barcoded Matrix tube containing 10ug of transfection-ready, dried plasmid DNA (reconstitute with 100 ul of water).

- Reconstitution Method:**
1. Centrifuge at 5,000xg for 5min.
  2. Carefully open the tube and add 100ul of sterile water to dissolve the DNA.
  3. Close the tube and incubate for 10 minutes at room temperature.
  4. Briefly vortex the tube and then do a quick spin (less than 5000xg) to concentrate the liquid at the bottom.
  5. Store the suspended plasmid at -20°C. The DNA is stable for at least one year from date of shipping when stored at -20°C.

**RefSeq:** [NM\\_145201.3](#), [NP\\_660202.2](#)

**RefSeq Size:** 1875 bp

**RefSeq ORF:** 1617 bp

**Locus ID:** 93100

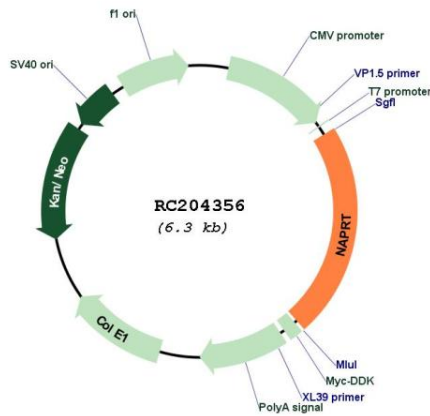
**UniProt ID:** [Q6XQN6](#)

**Cytogenetics:** 8q24.3

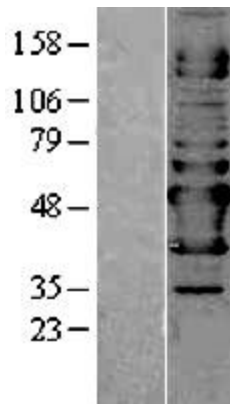
**MW:** 49.4 kDa

**Gene Summary:** Nicotinic acid (NA; niacin) is converted by nicotinic acid phosphoribosyltransferase (NAPRT; EC 2.4.2.11) to NA mononucleotide (NaMN), which is then converted to NA adenine dinucleotide (NaAD), and finally to nicotinamide adenine dinucleotide (NAD), which serves as a coenzyme in cellular redox reactions and is an essential component of a variety of processes in cellular metabolism including response to stress (Hara et al., 2007).[supplied by OMIM, Mar 2008]

**Product images:**



Circular map for RC204356



Western blot validation of overexpression lysate (Cat# [LY403430]) using anti-DDK antibody (Cat# [TA50011-100]). Left: Cell lysates from untransfected HEK293T cells; Right: Cell lysates from HEK293T cells transfected with RC204356 using transfection reagent MegaTran 2.0 (Cat# [TT210002]).