

Product datasheet for **RC204355**

CDC37L1 (NM_017913) Human Tagged ORF Clone

Product data:

Product Type:	Expression Plasmids
Product Name:	CDC37L1 (NM_017913) Human Tagged ORF Clone
Tag:	Myc-DDK
Symbol:	CDC37L1
Synonyms:	CDC37B; HARC
Mammalian Cell Selection:	Neomycin
Vector:	pCMV6-Entry (PS100001)
E. coli Selection:	Kanamycin (25 ug/mL)
ORF Nucleotide Sequence:	>RC204355 ORF sequence Red=Cloning site Blue=ORF Green=Tags(s)

TTTTGTAATACGACTCACTATAGGGCGGCCGGAATTCGTCGACTGGATCCGGTACCGAGGAGATCTGCC
GCC**CGATCGCC**

ATGGAACAACCGTGGCCGCTCCGGACCTGGAGCCTCCCTCGGGCCGAGGGTGAGGCTGAGGAAGAGA
GTGACTTCGACGTGTTCCCCAGTTCTCCCGCTGCCCGCAGCTGCCAGGCGGGCGCCAGATGTATAG
CCATGGAATTGAATTGGCTTGCCAAAAGCAGAAAGAGTTGTGAAGAGCTCTGTGGCGTGCAATGGAAT
CTTGCTGAAGCTCAACAGAACTTGGTAGCTTAGCACTGCATAATTCTGAGTCTTGGATCAGGAGCATG
CCAAAGCACAACAGCAGTATCAGAAGTGGCAACGGGAAGAAGAGTGGCGACAGAAAGAAGAGCTCT
AGTACAAAGAGAGAAGATGTGTCTGTGGAGCACGGATGCCATTAGCAAGGATGTTTTTAATAAGAGTTTT
ATTAATCAAGATAAAAGAAAAGACAGAAAGATGAAGATAAATCAGAATCATTTATGCAAAAATATGAGC
AAAAATCAGACATTTTGGTATGTTGAGTCGATGGGATGATAGCCAGAGATTTTTGTCTGACCATCCATA
CCTTGTATGTGAAGAACTGCTAAATATCTTATTTATGGTGTTCACCTGGAAGCTGAGAAGAAAGGG
GCTTTAATGGAACAAATAGCACATCAAGCTGTTGTAATGCAGTTTATTATGGAATGGCCAAAACCTGTA
ATGTGGATCCAAGAGGGTGTTCGTTTATTTTCCAGAAAGCCAAAGCAGAGGAAGAAGGTTATTTTGA
AGCATTCAAAAATGAACCTGAAGCTTCAAGTCAAGAGTAAGACTTTATTCTCAATCACAAAGTTTTCAA
CCTATGACAGTTCAGAATCATGTTCCCATCTGGTGTGGATCTATAGGTTTATTAGAATCCTTACCAC
AGAATCCAGATTATCTTCAAGTATCTATCAGTACAGCTCTCTGCAGCTTAACTCGGTGGTACATAAAGA
AGATGATGAACCCAAAATGATGGACTGTA

ACGCGTACGCGGCCGCTCGAGCAGAACTCATCTCAGAAGAGGATCTGGCAGCAATGATATCCTGGATT
ACAAGGATGACGACGATAAGGTTTAA



[View online »](#)

Protein Sequence: >RC204355 protein sequence
Red=Cloning site Green=Tags(s)

MEQPWPPPGPWSLPRAEGEAEESDFDVPSSPRCPQLPGGGAQMYSHGIELACQKQKEFVKSSVACKWN
 LAEAQQKLGSLALHNSESLDQEHAKAQTAVSELRQREEEWRQKEEALVQREKMCLWSTDAISKDVFNKSF
 INQDKRKDTEDEKSESMQKYEQKIRHF GMLSRWDDSQRF LSDHPYL VCEETAKYL ILCWFHLEAEKKG
 ALMEQIAHQAVVMQF IMEMAKNCNVDPGRCFRLFFQKAKAE EEGYFEAFKNELEAFKSRVRLYSQSQSFQ
 PMTVQNHVPHSGVGSIGLLESLPQNPDYLQYSISTALCSLNSVHKEDEDEPKMMDTV

TRTRPLEQKLISEEDLAANDILDYKDDDDKV

Chromatograms: https://cdn.origene.com/chromatograms/mk6175_b09.zip

Restriction Sites: SgfI-MluI

Cloning Scheme:

Cloning sites used for ORF Shuttling:



* The last codon before the Stop codon of the ORF

ACCN: NM_017913

ORF Size: 1011 bp

OTI Disclaimer: The molecular sequence of this clone aligns with the gene accession number as a point of reference only. However, individual transcript sequences of the same gene can differ through naturally occurring variations (e.g. polymorphisms), each with its own valid existence. This clone is substantially in agreement with the reference, but a complete review of all prevailing variants is recommended prior to use. [More info](#)

OTI Annotation: This clone was engineered to express the complete ORF with an expression tag. Expression varies depending on the nature of the gene.

Components: The ORF clone is ion-exchange column purified and shipped in a 2D barcoded Matrix tube containing 10ug of transfection-ready, dried plasmid DNA (reconstitute with 100 ul of water).

Reconstitution Method:

1. Centrifuge at 5,000xg for 5min.
2. Carefully open the tube and add 100ul of sterile water to dissolve the DNA.
3. Close the tube and incubate for 10 minutes at room temperature.
4. Briefly vortex the tube and then do a quick spin (less than 5000xg) to concentrate the liquid at the bottom.
5. Store the suspended plasmid at -20°C. The DNA is stable for at least one year from date of shipping when stored at -20°C.

RefSeq: [NM_017913.4](#)

RefSeq Size: 1724 bp

RefSeq ORF: 1014 bp

Locus ID: 55664

UniProt ID: [Q7L3B6](#)

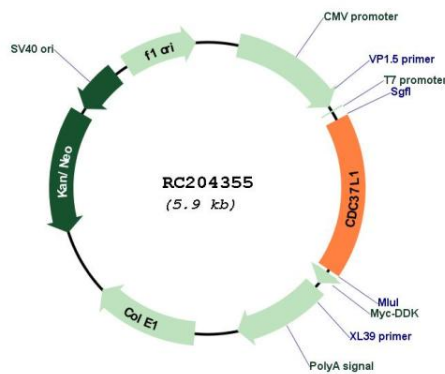
Cytogenetics: 9p24.1

Domains: Cdc37

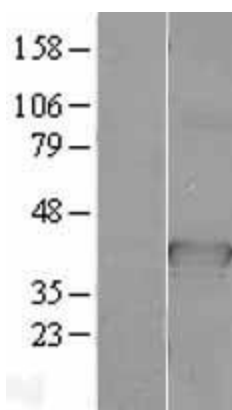
MW: 38.8 kDa

Gene Summary: CDC37L1 is a cytoplasmic phosphoprotein that exists in complex with HSP90 (HSPCA; MIM 140571) as well as several other proteins involved in HSP90-mediated protein folding (Scholz et al., 2001 [PubMed 11413142]).[supplied by OMIM, Mar 2008]

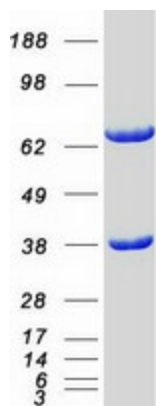
Product images:



Circular map for RC204355



Western blot validation of overexpression lysate (Cat# [LY402629]) using anti-DDK antibody (Cat# [TA50011-100]). Left: Cell lysates from untransfected HEK293T cells; Right: Cell lysates from HEK293T cells transfected with RC204355 using transfection reagent MegaTran 2.0 (Cat# [TT210002]).



Coomassie blue staining of purified CDC37L1 protein (Cat# [TP304355]). The protein was produced from HEK293T cells transfected with CDC37L1 cDNA clone (Cat# RC204355) using MegaTran 2.0 (Cat# [TT210002]).