

## Product datasheet for RC204348

### CTHRC1 (NM\_138455) Human Tagged ORF Clone

#### Product data:

Product Type:	Expression Plasmids
Product Name:	CTHRC1 (NM_138455) Human Tagged ORF Clone
Tag:	Myc-DDK
Symbol:	CTHRC1
Mammalian Cell Selection:	Neomycin
Vector:	pCMV6-Entry (PS100001)
E. coli Selection:	Kanamycin (25 ug/mL)
ORF Nucleotide Sequence:	>RC204348 ORF sequence Red=Cloning site Blue=ORF Green=Tags(s)

TTTTGTAATACGACTCACTATAGGGCGGCCGGAATTCGTCGACTGGATCCGGTACCGAGGAGATCTGCC  
GCC**CGATCGCC**

ATGCGACCCAGGGCCCCGCCCTCCCCGACGGCTCCGCGGCCTCCTGCTGCTCCTGCTGCTGCAGC  
TGCCCCGCCGTCGAGCGCCTCTGAGATCCCCAAGGGGAAGCAAAGGCCAGCTCCGGCAGAGGGAGGT  
GGTGGACCTGTATAATGGAATGTGCTTACAAGGGCCAGCAGGAGTGCCTGGTCGAGACGGGAGCCCTGGG  
GCCAATGGCATTCCGGGTACACCTGGGATCCCAGGTCGGATGGATTCAAAGGAGAAAAGGGGAATGTC  
TGAGGAAAGCTTTGAGGAGTCTGGACACCCAACTACAAGCAGTGTTCATGGAGTTCATTGAATTATGG  
CATAGATCTTGGGAAAATTGCGGAGTGTACATTTACAAAGATGCGTTCAAATAGTGCTCTAAGAGTTTTG  
TTCAGTGGCTCACTTCGGCTAAAATGCAGAAATGCATGCTGTCAGCGTTGGTATTTACATTCAATGGAG  
CTGAATGTTTCAGGACCTCTCCATTGAAGCTATAATTTATTTGGACCAAGGAAGCCCTGAAATGAATTC  
AACAAATTAATATTCATCGCACTTCTTGTGGAAGGACTTTGTGAAGGAATTGGTCTGGATTAGTGGAT  
GTTGCTATCTGGGTTGGCACTTGTTCAGATTACCCAAAAGGAGATGCTTCTACTGGATGGAATTCAGTTT  
CTCGCATCATTATTGAAGAACTACCAAAA

**ACGCGT**ACGCGGCCGCTCGAGCAGAAACTCATCTCAGAAGAGGATCTGGCAGCAAATGATATCCTGGATT  
ACAAGGATGACGACGATAAGGTTTAA



[View online »](#)

**Protein Sequence:** >RC204348 protein sequence  
 Red=Cloning site Green=Tags(s)

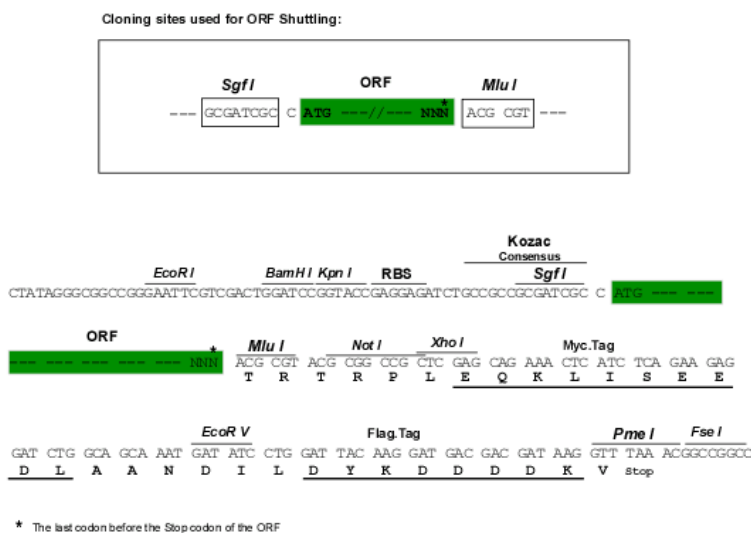
MRPQGPAASPQRLRGLLLLLLLQLPAPSSASEIPKKGKKAQLRQREVVDLYNGMCLQGVPAGVPRDGGSPG  
 ANGIPGTGPIGRDGFKGEKGECLRESFEESWTPNYKQCSWSSLNYGIDLGKIAECTFTKMRSNSALRVL  
 FSGSLRLKCRNACCQRWYFTFNGAECSGPLPIEAIYLDQGSPEMNSTINIHRSSVEGLCEGIGAGLVD  
 VAIWVGTCSDYPKGDASTGWNSVSRIIEELPK

TRTRPLEQKLISEEDLAANDILDYKDDDDKV

**Chromatograms:** [https://cdn.origene.com/chromatograms/mk6060\\_c11.zip](https://cdn.origene.com/chromatograms/mk6060_c11.zip)

**Restriction Sites:** SgfI-MluI

**Cloning Scheme:**



**ACCN:** NM\_138455

**ORF Size:** 729 bp

**OTI Disclaimer:** The molecular sequence of this clone aligns with the gene accession number as a point of reference only. However, individual transcript sequences of the same gene can differ through naturally occurring variations (e.g. polymorphisms), each with its own valid existence. This clone is substantially in agreement with the reference, but a complete review of all prevailing variants is recommended prior to use. [More info](#)

**OTI Annotation:** This clone was engineered to express the complete ORF with an expression tag. Expression varies depending on the nature of the gene.

**Components:** The ORF clone is ion-exchange column purified and shipped in a 2D barcoded Matrix tube containing 10ug of transfection-ready, dried plasmid DNA (reconstitute with 100 ul of water).

**Reconstitution Method:**

1. Centrifuge at 5,000xg for 5min.
2. Carefully open the tube and add 100ul of sterile water to dissolve the DNA.
3. Close the tube and incubate for 10 minutes at room temperature.
4. Briefly vortex the tube and then do a quick spin (less than 5000xg) to concentrate the liquid at the bottom.
5. Store the suspended plasmid at -20°C. The DNA is stable for at least one year from date of shipping when stored at -20°C.

**RefSeq:** [NM\\_138455.2](#), [NP\\_612464.1](#)

**RefSeq Size:** 1279 bp

**RefSeq ORF:** 732 bp

**Locus ID:** 115908

**UniProt ID:** [Q96CG8](#)

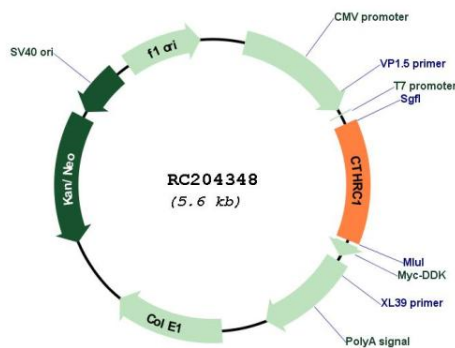
**Cytogenetics:** 8q22.3

**Protein Families:** Secreted Protein

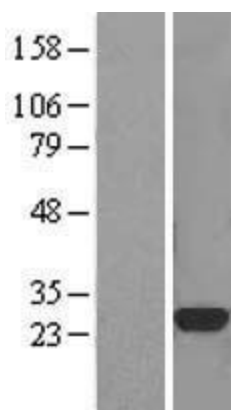
**MW:** 26.2 kDa

**Gene Summary:** This locus encodes a protein that may play a role in the cellular response to arterial injury through involvement in vascular remodeling. Mutations at this locus have been associated with Barrett esophagus and esophageal adenocarcinoma. Alternatively spliced transcript variants have been described. [provided by RefSeq, Jan 2012]

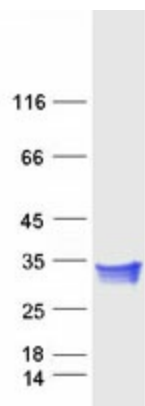
### Product images:



Circular map for RC204348



Western blot validation of overexpression lysate (Cat# [LY408605]) using anti-DDK antibody (Cat# [TA50011-100]). Left: Cell lysates from untransfected HEK293T cells; Right: Cell lysates from HEK293T cells transfected with RC204348 using transfection reagent MegaTran 2.0 (Cat# [TT210002]).



Coomassie blue staining of purified CTHRC1 protein (Cat# [TP304348]). The protein was produced from HEK293T cells transfected with CTHRC1 cDNA clone (Cat# RC204348) using MegaTran 2.0 (Cat# [TT210002]).