

Product datasheet for **RC204347**

Syntaxin 16 (STX16) (NM_003763) Human Tagged ORF Clone

Product data:

Product Type:	Expression Plasmids
Product Name:	Syntaxin 16 (STX16) (NM_003763) Human Tagged ORF Clone
Tag:	Myc-DDK
Symbol:	Syntaxin 16
Synonyms:	SYN16
Mammalian Cell Selection:	Neomycin
Vector:	pCMV6-Entry (PS100001)
E. coli Selection:	Kanamycin (25 ug/mL)
ORF Nucleotide Sequence:	>RC204347 ORF sequence Red=Cloning site Blue=ORF Green=Tags(s)

TTTTGTAATACGACTCACTATAGGGCGGCCGGAATTCGTCGACTGGATCCGGTACCGAGGAGATCTGCC
GCC**CGATCGCC**

ATGGCCACCAGGCGTTTAAACCGACGCTTCTTGTGTTGCGGAATAATCCATCCAAAACCGGCAGCTGT
TAGCCGAGCAACTTGCTGATGACCGTATGGCACTGGTGTGAGGCATCAGCTTAGATCCAGAAGCAGCGAT
TGGTGTGACAAAACGGCCACCTCCTAAGTGGGTGGATGGAGTGGATGAAATTCAGTATGATGTTGGCCGG
ATTAAGCAGAAGATGAAAGAATTGGCCAGCCTTCATGACAAGCATTAAACAGACCCACCCTGGATGACA
GCAGCGAAGAGGAACATGCCATTGAGATAACTACCAAGAGATCACTCAGCTCTCCACAGGTGCCAGCG
TGCCGTGCAGGCCCTGCCGAGCCGGGCCCGGCCCTGCTCCGAGCAGGAGGGCGGCTGCTGGGAACGTG
GTGGCCTCGCTGGCGCAGGCCCTGCAGGAATCTCCACCAGCTTCCGGCAGGCACAGTCAGGCTACCTCA
AACGCATGAAGAAATCGAGAGGAAAGATCCAGCATTTCGACACATCAGTACCACTAATGGATGATGG
AGACGATAACACTCTTTACCATCGGGTTTTACAGAGGACCAGTTAGTTCTGGTGGAGCAGAACACACTG
ATGGTGAAGAGCGGGAACGAGAGATTCGCCAGATTGTACAGTCCATTTCTGACCTGAATGAAATATTCA
GGGACTTAGGGGCGATGATTGTAGAACAGGGTACAGTCCTTGACAGAATTGACTATAACGTTGAACAGTC
CTGTATCAAACTGAAGATGGTTTGAACAGCTTCACAAGGCAGAACAGTATCAAAGAAGAATCGGAAG
ATGCTTGTGATTTAATATTATTGTGCATCATCATTGTGCTCATTGTTGTCTCGTTGGCGTGAAGTCTC
GA

ACGCGTACGCGGCCGCTCGAGCAGAACTCATCTCAGAAGAGGATCTGGCAGCAATGATATCCTGGATT
ACAAGGATGACGACGATAAGGTTTAA



[View online »](#)

Protein Sequence: >RC204347 protein sequence
Red=Cloning site Green=Tags(s)

MATRRLTDAFLLLRNNSIQNRQLLAEQLADDRMALVSGISLDPEAAIGVTKRPPPKWVDGVDEIQYDVGR
 IKQKMKELASLHDKHLNRPTLDDSEEEHAIEITTQEITQLFHRCQRAVQALPSRARACSEQEGRLLGNV
 VASLAQALQELSTFRHAQSGYLKRMKNREERSQHFFDTSVPLMDDGDDNTLYHRGFTEQLVLEQNTL
 MVEEREREIRQIVQISIDLNEIFRDLGAMIVEQGTVLDRIDYNVEQSCIKTEDGLKQLHKAEQYQKKNRK
 MLVILILFVIIIVLIVLVGVKSR

TRTRPLEQKLISEEDLAANDILDYKDDDDKV

Chromatograms: https://cdn.origene.com/chromatograms/mk6430_a06.zip

Restriction Sites: SgfI-MluI

Cloning Scheme:

Cloning sites used for ORF Shuttling:



* The last codon before the Stop codon of the ORF

ACCN: NM_003763

ORF Size: 912 bp

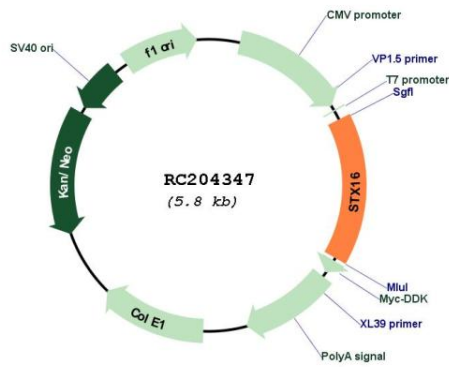
OTI Disclaimer: The molecular sequence of this clone aligns with the gene accession number as a point of reference only. However, individual transcript sequences of the same gene can differ through naturally occurring variations (e.g. polymorphisms), each with its own valid existence. This clone is substantially in agreement with the reference, but a complete review of all prevailing variants is recommended prior to use. [More info](#)

OTI Annotation: This clone was engineered to express the complete ORF with an expression tag. Expression varies depending on the nature of the gene.

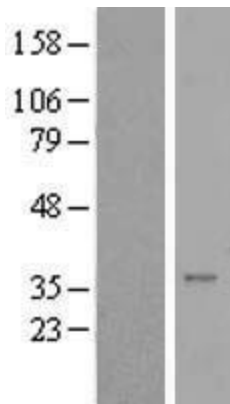
Components: The ORF clone is ion-exchange column purified and shipped in a 2D barcoded Matrix tube containing 10ug of transfection-ready, dried plasmid DNA (reconstitute with 100 ul of water).

Reconstitution Method:	<ol style="list-style-type: none">1. Centrifuge at 5,000xg for 5min.2. Carefully open the tube and add 100ul of sterile water to dissolve the DNA.3. Close the tube and incubate for 10 minutes at room temperature.4. Briefly vortex the tube and then do a quick spin (less than 5000xg) to concentrate the liquid at the bottom.5. Store the suspended plasmid at -20°C. The DNA is stable for at least one year from date of shipping when stored at -20°C.
RefSeq:	NM_003763.5
RefSeq Size:	4915 bp
RefSeq ORF:	915 bp
Locus ID:	8675
UniProt ID:	O14662
Cytogenetics:	20q13.32
Domains:	t_SNARE, SynN
Protein Families:	Druggable Genome, Transmembrane
Protein Pathways:	SNARE interactions in vesicular transport
MW:	34.8 kDa
Gene Summary:	<p>This gene encodes a protein that is a member of the syntaxin or t-SNARE (target-SNAP receptor) family. These proteins are found on cell membranes and serve as the targets for V-SNARES (vesicle-SNAP receptors) permitting specific synaptic vesicle docking and fusion. A microdeletion in the region of chromosome 20 where this gene is located has been associated with pseudohypoparathyroidism type 1b. Multiple transcript variants have been found for this gene. Read-through transcription also exists between this gene and the neighboring downstream aminopeptidase-like 1 (NPEPL1) gene. [provided by RefSeq, Mar 2011]</p>

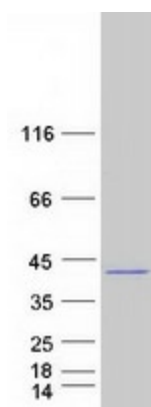
Product images:



Circular map for RC204347



Western blot validation of overexpression lysate (Cat# [LY418449]) using anti-DDK antibody (Cat# [TA50011-100]). Left: Cell lysates from untransfected HEK293T cells; Right: Cell lysates from HEK293T cells transfected with RC204347 using transfection reagent MegaTran 2.0 (Cat# [TT210002]).



Coomassie blue staining of purified STX16 protein (Cat# [TP304347]). The protein was produced from HEK293T cells transfected with STX16 cDNA clone (Cat# RC204347) using MegaTran 2.0 (Cat# [TT210002]).