

## Product datasheet for RC204344

### GPR146 (NM\_138445) Human Tagged ORF Clone

#### Product data:

Product Type:	Expression Plasmids
Product Name:	GPR146 (NM_138445) Human Tagged ORF Clone
Tag:	Myc-DDK
Symbol:	GPR146
Synonyms:	PGR8
Mammalian Cell Selection:	Neomycin
Vector:	pCMV6-Entry (PS100001)
E. coli Selection:	Kanamycin (25 ug/mL)
ORF Nucleotide Sequence:	>RC204344 ORF sequence Red=Cloning site Blue=ORF Green=Tags(s)

TTTTGTAATACGACTCACTATAGGGCGGCCGGAATTCGTCGACTGGATCCGGTACCGAGGAGATCTGCC  
GCC**CGATCGCC**

ATGTGGAGCTGCAGCTGGTTCAACGGCACAGGGCTGGTGGAGGAGCTGCCTGCCTGCCAGGACCTGCAGC  
TGGGGCTGTCACTGTTGTCGCTGCTGGGCTGGTGGTGGGCGTGCCAGTGGGCTGTGCTACAACGCCCT  
GCTGGTGTGGCAACCTACACAGCAAGGCCAGCATGACCATGCCGGACGTGTACTTTGTCAACATGGCA  
GTGGCAGGCTGGTGTCTAGCGCCCTGGCCCTGTGCACCTGCTCGGCCCCCGAGCTCCCGGTGGGCGC  
TGTGGAGTGTGGGCGGCAAGTCCAGTGGCACTGCAGATCCCTTCAATGTGTCCTCACTGGTGGCCAT  
GTACTCCACCGCCCTGTGAGCCTCGACCACTACATCGAGCGTGCCTGCCGCGGACCTACATGGCCAGC  
GTGTACAACACGGCGCACGTGTGCGGCTTCGTGTGGGGTGGCGCGCTGCTGACCAGCTTCTCCTCGCTGC  
TCTTCTACATCTGCAGCCATGTGTCCACCCGCGCGCTAGAGTGCGCCAAGATGCAGAACGCAGAAGCTGC  
CGACGCCACGCTGGTGTTCATCGGCTACGTGGTGGCAGCACTGGCCACCCTCTACGCGTGGTGTACTC  
TCCCGCTCCGACGGGAGGACACGCCCTGGACCGGGACACGGGCGGCTGGAGCCCTCGGCACACAGGC  
TGCTGGTGGCCACCGTGTGCACGCAGTTTGGGCTCTGGACGCCACACTATCTGATCTCTGCTGGGGCACAC  
GGTCATCATCTCGCGAGGGAAGCCCGTGGACGCACACTACCTGGGCTACTGCACTTTGTGAAGGATTTCC  
TCCAAACTCCTGGCCTTCTCCAGCAGCTTGTGACACCACTTCTTACCCTACATGAACCAGAGCTTCC  
CCAGCAAGCTCCAACGGCTGATGAAAAGCTGCCCTGCGGGGACCGGCACTGCTCCCGGACCACATGGG  
GGTGCAGCAGGTGCTGGCG

**ACGCGT**ACGCGGCCGCTCGAGCAGAACTCATCTCAGAAGAGGATCTGGCAGCAAATGATATCCTGGATT  
ACAAGGATGACGACGATAAGGTTTAA



[View online »](#)

**Protein Sequence:** >RC204344 protein sequence  
Red=Cloning site Green=Tags(s)

MWSCSWFNGTGLVEELPACQDLQLGLSLLSLLGLVVGVPVGLCYNALLVLANLHASKASMTMPDVYFVNMA  
 VAGLVLSALAPVHLLGPPSSRWALWSVGGEVHVALQIPFNVSSLVAMYSTALLSLDHYIERALPRTYMAS  
 VYNTRHVCGFVWGGALLTSFSSLLFYICSHVSTRALECAKMQNAEADATLVFIGYVVPALATLYALVLL  
 SRVRREDTPLDRDTGRLEPSAHRLLVATVCTQFGLWTPHYLILLGHTVVISRGKPVDAHYLGLLHFVKDF  
 SKLLAFSSSFVTPLLYRYMNQSFPSKLQRLMKKLP CGDRHCSPDHMGVQQVLA

TRTRPLEQKLISEEDLAANDILDYKDDDDKV

**Chromatograms:** [https://cdn.origene.com/chromatograms/mk6175\\_b05.zip](https://cdn.origene.com/chromatograms/mk6175_b05.zip)

**Restriction Sites:** SgfI-MluI

**Cloning Scheme:**



**ACCN:** NM\_138445

**ORF Size:** 999 bp

**OTI Disclaimer:** The molecular sequence of this clone aligns with the gene accession number as a point of reference only. However, individual transcript sequences of the same gene can differ through naturally occurring variations (e.g. polymorphisms), each with its own valid existence. This clone is substantially in agreement with the reference, but a complete review of all prevailing variants is recommended prior to use. [More info](#)

**OTI Annotation:** This clone was engineered to express the complete ORF with an expression tag. Expression varies depending on the nature of the gene.

**Components:** The ORF clone is ion-exchange column purified and shipped in a 2D barcoded Matrix tube containing 10ug of transfection-ready, dried plasmid DNA (reconstitute with 100 ul of water).

**Reconstitution Method:**

1. Centrifuge at 5,000xg for 5min.
2. Carefully open the tube and add 100ul of sterile water to dissolve the DNA.
3. Close the tube and incubate for 10 minutes at room temperature.
4. Briefly vortex the tube and then do a quick spin (less than 5000xg) to concentrate the liquid at the bottom.
5. Store the suspended plasmid at -20°C. The DNA is stable for at least one year from date of shipping when stored at -20°C.

**RefSeq:** [NM\\_138445.4](#)

**RefSeq Size:** 1776 bp

**RefSeq ORF:** 1002 bp

**Locus ID:** 115330

**UniProt ID:** [Q96CH1](#)

**Cytogenetics:** 7p22.3

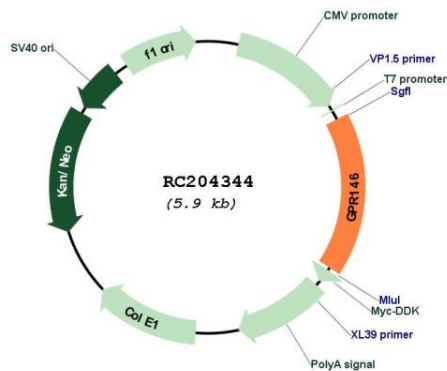
**Domains:** 7tm\_1

**Protein Families:** Druggable Genome, GPCR, Transmembrane

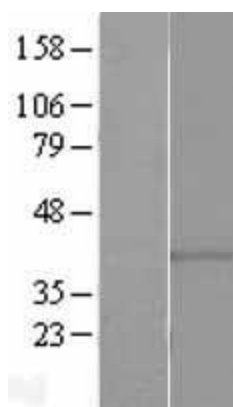
**MW:** 36.6 kDa

**Gene Summary:** Orphan receptor.[UniProtKB/Swiss-Prot Function]

**Product images:**



Circular map for RC204344



Western blot validation of overexpression lysate (Cat# [LY403355]) using anti-DDK antibody (Cat# [TA50011-100]). Left: Cell lysates from untransfected HEK293T cells; Right: Cell lysates from HEK293T cells transfected with RC204344 using transfection reagent MegaTran 2.0 (Cat# [TT210002]).