

Product datasheet for **RC204342**

ARH3 (ADPRHL2) (NM_017825) Human Tagged ORF Clone

Product data:

Product Type:	Expression Plasmids
Product Name:	ARH3 (ADPRHL2) (NM_017825) Human Tagged ORF Clone
Tag:	Myc-DDK
Symbol:	ARH3
Synonyms:	ADPRHL2; ARH3; CONDSIAS
Mammalian Cell Selection:	Neomycin
Vector:	pCMV6-Entry (PS100001)
E. coli Selection:	Kanamycin (25 ug/mL)
ORF Nucleotide Sequence:	>RC204342 ORF sequence Red=Cloning site Blue=ORF Green=Tags(s)

TTTTGTAATACGACTCACTATAGGGCGCCGGGAATTCGTCGACTGGATCCGGTACCGAGGAGATCTGCC
GCC**CGATCGCC**

ATGGCCGAGCGGCGATGGCGGCAGCGGCAGGTGGAGGGGCTGGCGGGCCCGCTCCCTCTCGCGCTTCC
GAGGCTGCCTGGCTGGCGCGCTGCTCGGGGACTGCGTGGGCTCCTTCTACGAGGCCACGACACCGTTCGA
CCTGACGTCAGTCCTGCGTCATGTCCAGAGTCTGGAGCCGGACCCGGCACGCCGGGAGTGAGCGGACA
GAAGCCTTGTACTACACAGATGACACAGCCATGGCCAGGGCCCTGGTGCAGTCCCTGCTAGCCAAGGAGG
CCTTTGACGAGGTGGACATGGCTCACAGATTTGCTCAGGAGTACAAGAAAGACCCTGACAGGGGCTATGG
TGCTGGAGTAGTCACTGTCTTAAGAAGCTCCTGAACCCCAAATGTCGGATGTCTTTGAGCCTGCCCGG
GCCAGTTTAAACGGGAAAGGCTCCTATGGCAATGGAGGTGCCATGCGGGTGGCTGGCATCTCCCTGGCCT
ATAGCAGTGTCCAGGATGTGAGAAGTTTGCCCGGCTCTCGGCCAGCTGACACACGCCTCCTCCCTGGG
TTACAATGGCGCCATCCTGCAGGCCCTGGCTGTGCACCTGGCCTTGCAGGGCGAGTCTTCCAGCGAGCAC
TTTCTCAAGCAACTCCTGGGCCACATGGAGGATCTGGAGGGTGTGCCAGTCCGTCTTGGATGCCAGGG
AGTTGGGCATGGAGGAGCGTCCATACTCCAGCCGCTGAAGAAGATTGGAGAGCTTCTAGACCAGGCATC
GGTGACCAGGGAGGAAGTGGTGTCTGAGCTAGGAATGGCATTGCTGCCTTTGAGTCGGTACCCACCGCC
ATCTACTGCTTCTCAGCTGCATGGAGCCAGACCCTGAGATCCCTTCTGCCTTCAATAGCCTCAAAGGA
CTCTCATTATTCCATCTCACTTGGTGGGACACAGACACCATTGCCACCATGGCTGGGGCCATTGCTGG
TGCTACTATGGGATGGATCAGGTGCCAGAGAGCTGGCAGCAAAGCTGTGAAGGCTACGAGGAGACAGAC
ATCCTGGCCCAAAGCCTGCACCGTGTCTCCAGAAGAGT

ACGCGTACGCGGCCGCTCGAGCAGAAACTCATCTCAGAAGAGGATCTGGCAGCAAATGATATCCTGGATT
ACAAGGATGACGACGATAAGGTTTAA



[View online »](#)

Protein Sequence: >RC204342 protein sequence
Red=Cloning site Green=Tags(s)

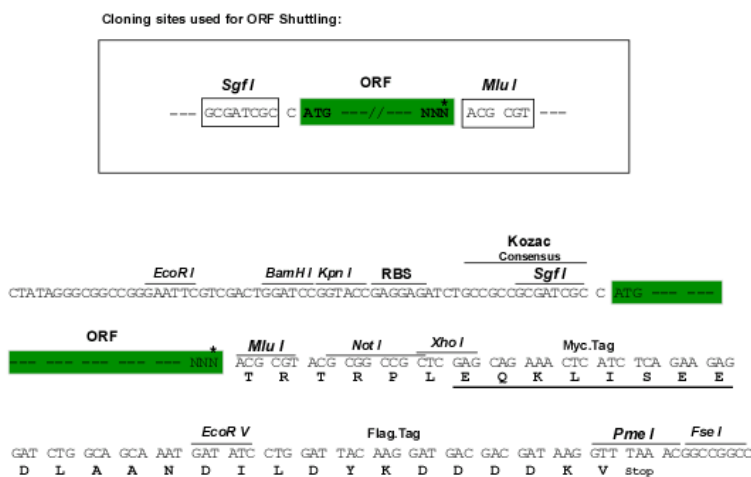
MAAAAMAAAGGGAGAARSLSRFRGCLAGALLGDCVGSFYEAHDTVDLTSLVRHVQSLEPDPGTPGSERT
 EALYYTDDTAMARALVQSLLAKEAFDEVDMHRFAQEYKDPDRGYGAGVVTVFKLLNPKCRDVFEPAR
 AQFNGKGSYGGGAMRVAGISLAYSSVQDVQKFAARLSAQLTHASSLGYNGAILQALAVHLALQGESSEH
 FLKQLLGHMEDLEGDAQSVLDARELGMEERPYSRLLKIGELLDQASVTREEVVSELGNIAAFESVPTA
 IYCFLRMEPDPEIPSAFNSLQRTLIIYSISLGGDTDTIATMAGAIAGAYYGMDQVPESWQQSCGEYEETD
 ILAQLSHRVFQKS

TRTRPLEQKLISEEDLAANDILDYKDDDDKV

Chromatograms: https://cdn.origene.com/chromatograms/mk6060_e07.zip

Restriction Sites: SgfI-MluI

Cloning Scheme:



* The last codon before the Stop codon of the ORF

ACCN: NM_017825

ORF Size: 1089 bp

OTI Disclaimer: The molecular sequence of this clone aligns with the gene accession number as a point of reference only. However, individual transcript sequences of the same gene can differ through naturally occurring variations (e.g. polymorphisms), each with its own valid existence. This clone is substantially in agreement with the reference, but a complete review of all prevailing variants is recommended prior to use. [More info](#)

OTI Annotation: This clone was engineered to express the complete ORF with an expression tag. Expression varies depending on the nature of the gene.

Components: The ORF clone is ion-exchange column purified and shipped in a 2D barcoded Matrix tube containing 10ug of transfection-ready, dried plasmid DNA (reconstitute with 100 ul of water).

Reconstitution Method:

1. Centrifuge at 5,000xg for 5min.
2. Carefully open the tube and add 100ul of sterile water to dissolve the DNA.
3. Close the tube and incubate for 10 minutes at room temperature.
4. Briefly vortex the tube and then do a quick spin (less than 5000xg) to concentrate the liquid at the bottom.
5. Store the suspended plasmid at -20°C. The DNA is stable for at least one year from date of shipping when stored at -20°C.

RefSeq: [NM_017825.3](#)

RefSeq Size: 1701 bp

RefSeq ORF: 1092 bp

Locus ID: 54936

UniProt ID: [Q9NX46](#)

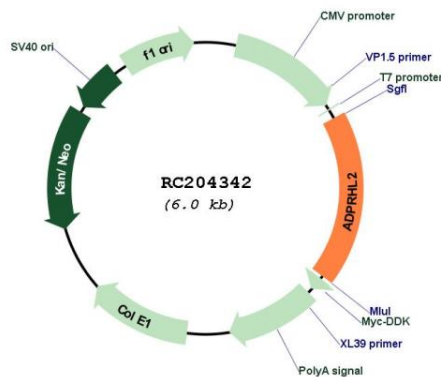
Cytogenetics: 1p34.3

Domains: ADP-ribosyl_GH

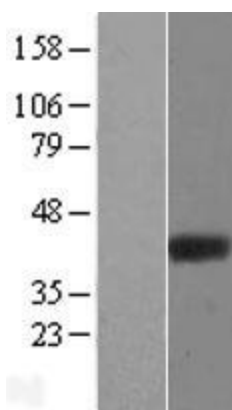
MW: 38.9 kDa

Gene Summary: This gene encodes a member of the ADP-ribosylglycohydrolase family. The encoded enzyme catalyzes the removal of ADP-ribose from ADP-ribosylated proteins. This enzyme localizes to the mitochondria, in addition to the nucleus and cytoplasm.[provided by RefSeq, Feb 2009]

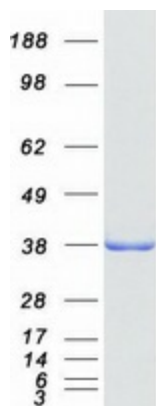
Product images:



Circular map for RC204342



Western blot validation of overexpression lysate (Cat# [LY402619]) using anti-DDK antibody (Cat# [TA50011-100]). Left: Cell lysates from untransfected HEK293T cells; Right: Cell lysates from HEK293T cells transfected with RC204342 using transfection reagent MegaTran 2.0 (Cat# [TT210002]).



Coomassie blue staining of purified ADPRHL2 protein (Cat# [TP304342]). The protein was produced from HEK293T cells transfected with ADPRHL2 cDNA clone (Cat# RC204342) using MegaTran 2.0 (Cat# [TT210002]).