

## Product datasheet for **RC204339**

### **GCC1 (NM\_024523) Human Tagged ORF Clone**

#### **Product data:**

Product Type:	Expression Plasmids
Product Name:	GCC1 (NM_024523) Human Tagged ORF Clone
Tag:	Myc-DDK
Symbol:	GCC1
Synonyms:	GCC1P; GCC88
Mammalian Cell Selection:	Neomycin
Vector:	pCMV6-Entry (PS100001)
E. coli Selection:	Kanamycin (25 ug/mL)



[View online »](#)

ORF Nucleotide  
Sequence:

>RC204339 ORF sequence  
 Red=Cloning site Blue=ORF Green=Tags(s)

TTTTGTAATACGACTCACTATAGGGCGGCCGGGAATTCGTCGACTGGATCCGGTACCGAGGAGATCTGCC  
 GCC**CGCATCGCC**

ATGGAGAAGTTTGGGATGAATTTGGGGCGGCCCGAGCAAGAAGGACTTGTGGAGACTATAGAGACCC  
 AGAAGAAGCAGCTTCTCCAGTACCAGGCACGGCTCAAGGATGTGGTCCGTGCCTATAAAAGCCTGCTGAA  
 GGAGAAAGAGGCATTAGAGGCCAGCATCAAGGTGCTGTCGGTATCCCACGAGGCAGATGTGGCCTCGCA  
 GGTGTCCAGCTTCCAGGCCTCACCTTCTGACTCTGTGGATGACCGGTGCTCCACTCACAGCGAGGATA  
 GCACTGGGACCGCCACTAGCTTGGATACTGCGGCCAGTCTCACCAGCACCAAGGGTGAGTTTGGGGTAGA  
 AGATGACAGACCGGCCCTGGACCACCCTCCAAAGTCCGAAGAGGCCAGTTGGTCCGAGAGTGGCGTT  
 AGCAGTAGCAGTGGGGATGGGCCATTTGCAGGTGGGGAGGTGGACAAAAGACTGCACCAGCTGAAGACTC  
 AGTTGGCTACTTTGACCAGTTCTTTGGCTACAGTCACTCAGGAGAAGTCCCGCATGGAGGCTTCTACTT  
 GGCTGACAAGAAAAGATGAAACAGGACTTAGAGGATGCCAGTAACAAGGCGGAGGAGAGGGCCCGC  
 CTGGAGGGAGAATTGAAGGGGCTGCAGGAGCAAATAGCAGAAACCAAAGCCCGGCTTATCACGCAGCAGC  
 ATGATCGGGCCCAAGAGCAGAGTGACCATGCTTGATGCTGCGTGAGCTCCAGAAGCTGCTGCAGGAGGA  
 GAGGACCCAGCGCCAGGACTTGGAGCTTAGGTTAGAAGAGACCCGAGAAGCCTTGGCAGGACGAGCATAT  
 GCAGCTGAACAGATGGAAGGATTTGAACTGCAGACCAAGCAGCTGACCCGTGAGGTGGAGGAGCTGAAAA  
 GTGAACTGCAGGCCATTCGAGATGAGAAGAATCAGCCAGATCCCCGGCTGCAAGAACTTCAGGAAGAGGC  
 TGCCCCGCTTAAGAGCCATTTCCAGGCTCAGTTACAGCAGGAAATGAGAAAGACAGCTCTTGAGAGGAT  
 CAACTCCGTGAGCAATCTCAGGTAGAAGAACAGAGGGTGGCAGCCCTGGAGAATCAAATATCCGAGGTGT  
 CTGAGCTGTAGGCACCTACGAGAAAGCCAAGCAGAAGGACCAGCTGGCCATTAGAAGCTGAAGAGCG  
 CATTCTGCAGCTGGACCTGGAGAACAAGACACTGGCTCTAGCAGCCTCCAGCAGGTCCCCTTTAGACAGC  
 CATGGAGAGGAGTCCAGTCTGGATGTCAATGTCCTGAAAGATAAGATGGAGAAGCTGAAGAGGCTGCTGC  
 AGGTTGCGGCCAGGAAAAGCCAGGTGACCTGGATGTGGAGAAGCTCTGTGACCTGGAGATAATGCCCAG  
 CTCGGAGGCTGCTGATGGGGAGAAGGCTACTGCACTCTATTACCAACAGGAGCTGAAACAGCTGAAGGAA  
 GAGTTTGAGAGGTACAAGATGAGAGCCCAGGTTGTCTCAAAGCAAGAATACCAAAGATGGTAACCTGG  
 GAAAGGAGCTGGAGGCAGCCAGGAACAGCTTGCAGAGCTGAAGGAGAAGTATATTTCCCTGCGGCTCTC  
 CTGCGAGGAGCTGGAGCACCAACACCAGCAGGAGGCTGATGACTGGAAGCAGGAGCTGGCCCGGCTGCAG  
 CAGCTCCACCGCAGGAGCTGGAGCGGTGCCAGCTGGACTTCAGGGACCGCACACTGAAACTGGAGGAGG  
 AGCTGCACAAGCAGCGGGATCGTGCCCTAGCTGTGCTCACCGAGAAGGACTTGAAACTGGAGCAACTGCG  
 TTCTGTGGCCTTGGCCTCTGGGCTGCCAGGACGCAGAAGTCTGTGGGTGGTGGCGGTCCTGGGGACCCA  
 GCTGACACATCATCCTCTGATAGCCTGACCCAAGCATTACAACCTGCAGCGGCCAATGAGCCCACTTTCT  
 TTCTGTACGCTGAGCAACTGGCCCGCAAGGAGGTGGAGATCACATCACTGAGGAAGCAGAAGCACAGGCT  
 GGAGGTCGAGGTGCATCAGCTGCAGGATCGGCTGCTGGAGGAGGGCGAACGGCATCGTGAGGAGGTTGCA  
 GCCCTGCAGAGCCACATCGAAAAGAATCAGGGACCAGAGCAGGGAGGGAGCCAATCTGGAGTACCTCA  
 AAAACATCATCTACCGCTTCTGACCTTACCTGACTCCCTGGGCCGCCAGCAGACTCTCACAGCCATACT  
 GACTATCTTGCACTTCACTCCAGAGGAGAAACAAGTGATAATGCGACTCCCAACCAAGTCCAGCTGGTGG  
 CCTTCTGGCAAGAGA

**ACGCGT**ACGCGGCCGCTCGAGCAGAAACTCATCTCAGAAGAGGATCTGGCAGCAAATGATATCCTGGATT  
 ACAAGGATGACGACGATAAGGTTTAA

**Protein Sequence:** >RC204339 protein sequence  
Red=Cloning site Green=Tags(s)

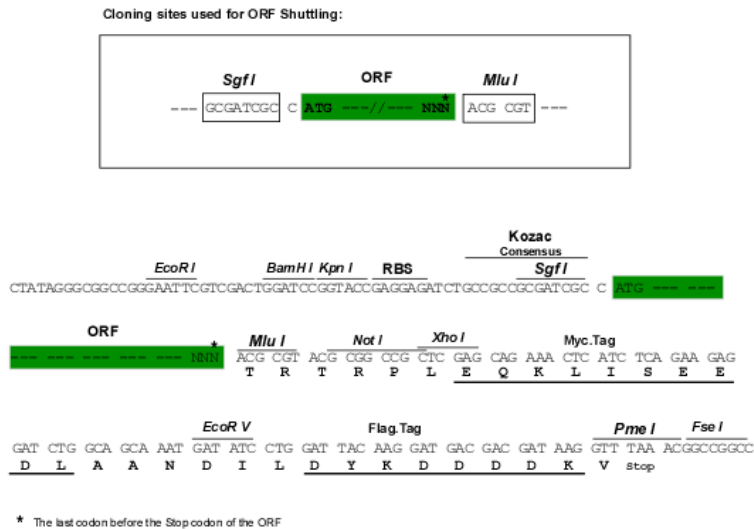
MEKFGMNFGGGPKKDLLETIETQKKQLLQYQARLKDVVRAYKSLLEKEALEASIKVLSVSHEADVGLA  
GVQLPGLTFPDSVDDRCSTHSEDSTGTATSLDTAASLTSTKGEFGVEDDRPARGPPPPKSEEASWSESGV  
SSSSGDGPFAGGEVDKRLHQLKTQLATLTSSLATVTQEKSMEASYLADKKMKQDLEDASNKAEEERAR  
LEGELKGLQEIQIAETKARLITQQHDRAQEQSDHALMLRELQKLLQEERTQRQDLELRLEETREALAGRAY  
AAEQMEGFELQTKQLTREVEELKSELQAIRDEKNQDPRLQELQEEAARLKSHFQAQLQQEMRKTALAED  
QLRQQSQVEEQRVAALENQISEVSELLGTYEKAKQKQDLAIQKLERILQLDLENKTLALAASSRPLDS  
HGEESLSDVNVLKDKMEKLRLLQVAARKSQVTL DVEKLCDEIMPSSAADGEKATALYYQELKQLKE  
EFERYKMRAQVVLKSKNTKDGNGKELEAAQEQLAELKEYISLRLSCEELEHQHQEADDWKQELARLQ  
QLHRQELERCQLDFRDRTLKLEELHKQRDRALAVL TEKDLELEQLRSVALASGLPGRSPVGGGGPGDP  
ADTSSSDSLTQALQLAAANEPTFFLYAEQLARKEVEITSLRKQKHRLVEVHQLQDRLLEEGERHREEVA  
ALQSHIEKNIRDQSREGANLEYLKNIIYRFL TLPDSLGRQQTLTAILTILHFSPEEKQVIMRLPTSASWW  
PSGKR

TRTRPLEQKLISEEDLAANDILDYKDDDDKV

**Chromatograms:** [https://cdn.origene.com/chromatograms/mk6716\\_a09.zip](https://cdn.origene.com/chromatograms/mk6716_a09.zip)

**Restriction Sites:** Sgfl-Mlul

Cloning Scheme:



ACCN: NM\_024523

ORF Size: 2325 bp

OTI Disclaimer: The molecular sequence of this clone aligns with the gene accession number as a point of reference only. However, individual transcript sequences of the same gene can differ through naturally occurring variations (e.g. polymorphisms), each with its own valid existence. This clone is substantially in agreement with the reference, but a complete review of all prevailing variants is recommended prior to use. [More info](#)

OTI Annotation: This clone was engineered to express the complete ORF with an expression tag. Expression varies depending on the nature of the gene.

Components: The ORF clone is ion-exchange column purified and shipped in a 2D barcoded Matrix tube containing 10ug of transfection-ready, dried plasmid DNA (reconstitute with 100 ul of water).

**Reconstitution Method:**

1. Centrifuge at 5,000xg for 5min.
2. Carefully open the tube and add 100ul of sterile water to dissolve the DNA.
3. Close the tube and incubate for 10 minutes at room temperature.
4. Briefly vortex the tube and then do a quick spin (less than 5000xg) to concentrate the liquid at the bottom.
5. Store the suspended plasmid at -20°C. The DNA is stable for at least one year from date of shipping when stored at -20°C.

**Note:** Plasmids are not sterile. For experiments where strict sterility is required, filtration with 0.22um filter is required.

**RefSeq:** [NM\\_024523.6](#)

**RefSeq Size:** 4152 bp

**RefSeq ORF:** 2328 bp

**Locus ID:** 79571

**UniProt ID:** [Q96CN9](#)

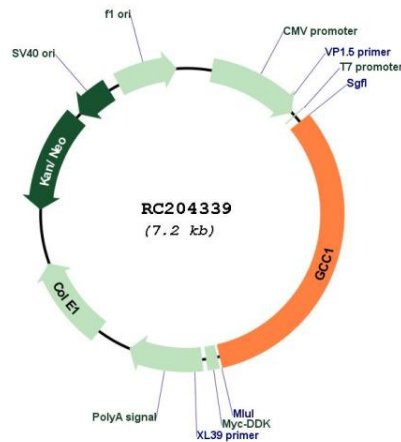
**Cytogenetics:** 7q32.1

**Domains:** GRIP

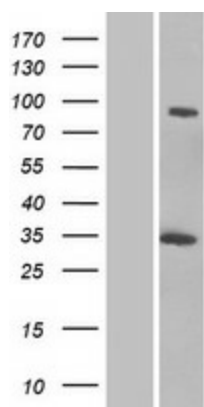
**MW:** 87.8 kDa

**Gene Summary:** The protein encoded by this gene is a peripheral membrane protein. It is sensitive to brefeldin A. This encoded protein contains a GRIP domain which is thought to be used in targeting. It may play a role in the organization of trans-Golgi network subcompartment involved with membrane transport. [provided by RefSeq, Jul 2008]

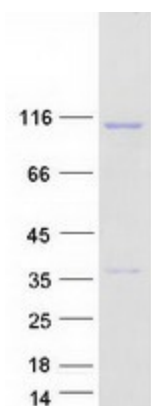
### Product images:



Circular map for RC204339



Western blot validation of overexpression lysate (Cat# [LY411266]) using anti-DDK antibody (Cat# [TA50011-100]). Left: Cell lysates from untransfected HEK293T cells; Right: Cell lysates from HEK293T cells transfected with RC204339 using transfection reagent MegaTran 2.0 (Cat# [TT210002]).



Coomassie blue staining of purified GCC1 protein (Cat# [TP304339]). The protein was produced from HEK293T cells transfected with GCC1 cDNA clone (Cat# RC204339) using MegaTran 2.0 (Cat# [TT210002]).