

Product datasheet for **RC204335**

CD23 (FCER2) (NM_002002) Human Tagged ORF Clone

Product data:

Product Type: Expression Plasmids
Product Name: CD23 (FCER2) (NM_002002) Human Tagged ORF Clone
Tag: Myc-DDK
Symbol: CD23
Synonyms: BLAST-2; CD23; CD23A; CLEC4J; FCE2; IGBF
Mammalian Cell Selection: Neomycin
Vector: pCMV6-Entry (PS100001)
E. coli Selection: Kanamycin (25 ug/mL)
ORF Nucleotide Sequence: >RC204335 ORF sequence
Red=Cloning site Blue=ORF Green=Tags(s)

TTTTGTAATACGACTCACTATAGGGCGGCCGGAATTCGTCGACTGGATCCGGTACCGAGGAGATCTGCC
GCC**CGGATCGCC**

ATGGAGGAAGGTCAATATTCAGAGATCGAGGAGCTTCCAGGAGGCGGTGTTGCAGGCGTGGGACTCAGA
TCGTGCTGCTGGGGCTGGTGACCGCGCTCTGTGGGCTGGGCTGCTGACTCTGCTTCTCCTGTGGCACTG
GGACACCACAGAGTCTAAAACAGCTGGAAGAGAGGGCTGCCCGAACGCTCTCAAGTTTCCAAGAAC
TTGGAAAGCCACCACGGTGACCAGATGGCGCAGAAATCCAGTCCACGCAGATTTACAGGAACTGGAGG
AACTTCGAGCTGAACAGCAGAGATTGAAATCTCAGGACTTGGAGCTGTCTGGAACCTGAACGGGCTTCA
AGCAGATCTGAGCAGTTCAAGTCCCAGGAATTGAACGAGAGGAACGAAGCTTCAGATTTGCTGGAAAGA
CTCCGGGAGGAGGTGACAAAGCTAAGGATGGAGTTGCAGGTGTCCAGCGCTTTGTGTGCAACACGTGCC
CTGAAAAGTGGATCAATTTCAAACGGAAGTGCTACTACTTCGGCAAGGGCACCAAGCAGTGGGTCCACGC
CCGGTATGCCTGTGACGACATGGAAGGGCAGCTGGTCAGCATCCACAGCCGGAGGAGCAGGACTTCCTG
ACCAAGCATGCCAGCCACACCGGCTCCTGGATTGGCCTTCGGAATTGGACCTGAAGGGGGAGTTTATCT
GGGTGGATGGGAGCCACGTGGACTACAGCAACTGGGCTCCAGGGGAGCCACCAGCCGGAGCCAGGGCGA
GGACTGCGTGATGATGCGGGGCTCCGGTCGCTGGAACGACGCCTTCTGCGACCGTAAGCTGGGCGCCTGG
GTGTGCGACCGGCTGGCCACATGCACGCCGCCAGCCAGCGAAGGTTCCCGGGAGTCCATGGGACCTGATT
CAAGACCAGACCCTGACGCGCCCTGCCACCCCTCTGCCCTCTCCACTCT

ACGCGTACGCGGCCGCTCGAGCAGAAACTCATCTCAGAAGAGGATCTGGCAGCAAATGATATCCTGGATT
ACAAGGATGACGACGATAAGGTTTAA



[View online »](#)

Protein Sequence: >RC204335 protein sequence
Red=Cloning site Green=Tags(s)

MEEGQYSEIEELPRRRCRRGTQIVLLGLVTAALWAGLLTLLLLWHWDTTQSLKQLEERAARNVSQVSKN
 LESHHDQMAQKSQSTQISQELEELRAEQRLKSQDLELSWNLNGLQADLSSFKSQELNERNEASDLLER
 LREEVTKLRMELQVSSGFVCNTCPEKWINFQRKCYFYGKGTKQVWHARYACDDMEGQLVSIHSPEEQDFL
 TKHASHTGSWIGLRNLDLKGFIWVDGSHVDYSNWAPGEPTSRSQGEDCVMRGSGRWDAFCDRKLGAW
 VCDRLATCTPPASEGSAESMGPSRPPDPGRLPTPSAPLHS

TRTRPLEQKLISEEDLAANDILDYKDDDDKV

Chromatograms: https://cdn.origene.com/chromatograms/mk6060_g08.zip

Restriction Sites: SgfI-MluI

Cloning Scheme:



ACCN: NM_002002

ORF Size: 963 bp

OTI Disclaimer: The molecular sequence of this clone aligns with the gene accession number as a point of reference only. However, individual transcript sequences of the same gene can differ through naturally occurring variations (e.g. polymorphisms), each with its own valid existence. This clone is substantially in agreement with the reference, but a complete review of all prevailing variants is recommended prior to use. [More info](#)

OTI Annotation: This clone was engineered to express the complete ORF with an expression tag. Expression varies depending on the nature of the gene.

Components: The ORF clone is ion-exchange column purified and shipped in a 2D barcoded Matrix tube containing 10ug of transfection-ready, dried plasmid DNA (reconstitute with 100 ul of water).

Reconstitution Method:

1. Centrifuge at 5,000xg for 5min.
2. Carefully open the tube and add 100ul of sterile water to dissolve the DNA.
3. Close the tube and incubate for 10 minutes at room temperature.
4. Briefly vortex the tube and then do a quick spin (less than 5000xg) to concentrate the liquid at the bottom.
5. Store the suspended plasmid at -20°C. The DNA is stable for at least one year from date of shipping when stored at -20°C.

Note: Plasmids are not sterile. For experiments where strict sterility is required, filtration with 0.22um filter is required.

RefSeq: [NM_002002.4](#)

RefSeq Size: 1620 bp

RefSeq ORF: 966 bp

Locus ID: 2208

UniProt ID: [P06734](#)

Cytogenetics: 19p13.2

Domains: CLECT

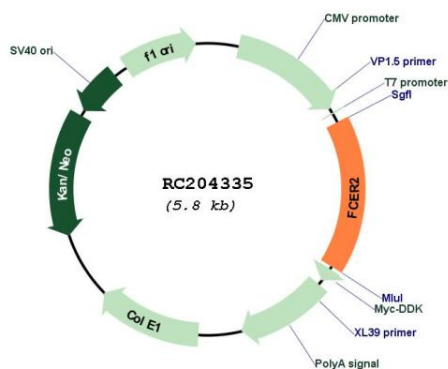
Protein Families: Secreted Protein, Transmembrane

Protein Pathways: Hematopoietic cell lineage

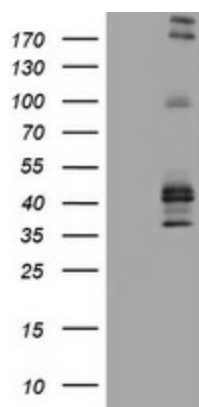
MW: 36.5 kDa

Gene Summary: The protein encoded by this gene is a B-cell specific antigen, and a low-affinity receptor for IgE. It has essential roles in B cell growth and differentiation, and the regulation of IgE production. This protein also exists as a soluble secreted form, then functioning as a potent mitogenic growth factor. Alternatively spliced transcript variants encoding different isoforms have been described for this gene.[provided by RefSeq, Jul 2011]

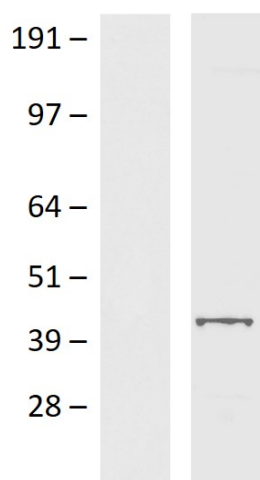
Product images:



Circular map for RC204335



HEK293T cells were transfected with the pCMV6-ENTRY control (Cat# [PS100001], Left lane) or pCMV6-ENTRY FCER2 (Cat# RC204335, Right lane) cDNA for 48 hrs and lysed. Equivalent amounts of cell lysates (5 ug per lane) were separated by SDS-PAGE and immunoblotted with anti-FCER2 (Cat# [TA801531])(1:2000).



Western blot validation of overexpression lysate (Cat# [LY419592]) using anti-DDK antibody (Cat# [TA592569]). Left: Cell lysates from untransfected HEK293T cells; Right: Cell lysates from HEK293T cells transfected with RC204335 using transfection reagent PEI.