

Product datasheet for **RC204333**

UPF3A (NM_080687) Human Tagged ORF Clone

Product data:

| | |
|---------------------------|--|
| Product Type: | Expression Plasmids |
| Product Name: | UPF3A (NM_080687) Human Tagged ORF Clone |
| Tag: | Myc-DDK |
| Symbol: | UPF3A |
| Synonyms: | HUPF3A; RENT3A; UPF3 |
| Mammalian Cell Selection: | Neomycin |
| Vector: | pCMV6-Entry (PS100001) |
| E. coli Selection: | Kanamycin (25 ug/mL) |



[View online »](#)

**ORF Nucleotide
Sequence:**

>RC204333 ORF sequence
 Red=Cloning site Blue=ORF Green=Tags(s)

TTTTGTAATACGACTCACTATAGGGCGGCCGGGAATTCGTCGACTGGATCCGGTACCGAGGAGATCTGCC
 GCC**CGCATCGC**

ATGCGCTCGGAAAAGAGGGGGCCGAGGCCTTCGGGCGGCCGTTGCCGCGGGGCCGAGCGGGAGGG
 AGAAGCTGTCGGCCCTAGAAGTGCAGTTCACCGCGACTCGCAGCAGCAGGAGGCTGAGACGCCGCCAAC
 TTCGTCCTCCGGTTGCGGGGGCGGTGCGGGCAAACCTCGCAGGAGAAGAGGACGGCCCTGAGCAAGGTG
 GTCATCCGCCGCTGCCTCCGGGCTCACCAAGGAGCAGCTGGAGGAGCAGCTGCGCCCGCTGCCAGCAC
 ACGACTACTTCGAGTTCTTCGCCCGGACCTGAGTCTTTATCCTCATCTCTACTCAAGAGCATACATTAA
 TTTTAGGAATCCTGATGACATCCTTCTTTTAGAGATCGTTTGGATGATATCTTCTTGACAGCAAA
 GATCCAGAATATAAGAAGTTTTAGAAACCTACTGTGTGGAGGAAGAGAAGACCAGTGCCAAACCCTGAGA
 CTCTGCTGGGGGAGATGGAGGCGAAGACAAGAGAGCTCATTGCTAGAAGAACCACACCTCTTTTGAATA
 TATTAATAATAGAAAATTAGAAAAGCAGAGAATTCGAGAAGAGAAGCGAGAAGAAGAGAAAGATGCAAAAAAAG
 TTAGAAAAAGAAAGCTTTGCGGGAAGAGGAAAAAGAAAGAGAAGAGAAGAAAGATGCAAAAAAAG
 AGACAGATAAACAGAAAGAAATTGCAGAGAAAGAAAGTAAGGATTAAGCTTCTTAAGAAACCAGAAAAGGG
 AGAGGAACCAACCACAGAGAAACCAAGAAAGAGGAGAGGAGATTGATACTGGAGGTGGCAAGCAGGAA
 TCCTGTGCCCCCGGTGCAGTCGTAAGGCCAGGCCCATGGAAGGCTCGCTGGAGGAGCCCCAGGAGACGT
 CACACAGCGGCAGTGATAAAGAGCACAGGGATGTGGAGAGATCTCAAGAACAAAGATCTGAAGCACAAAG
 ATACCATGTGGATGACGGCAGGAGGCACAGAGCTCACCACGAGCCTGAACGGCTTCCAGAAGGAGTGAG
 GATGAGCAGAGATGGGGGAAAGGACCTGGCCAAGACAGAGGGAAGAAGGGGAGCCAGGACAGCGGGGCTC
 CGGGGAGGCCATGGAGAGACTGGGAAGAGCGCAGAGGTGTGACGACAGTCCAGCACCCAGAAAAGAGCG
 ACTGGCAAAACAAGGACCGGCCAGCCTTGACGTGTATGATCCAGGAGCTCGCTTCCGAGCGCGAGAGTGT
 GCGGAAACAGGAGGATCTGCAAGGCAGAAGGTTGCGGGACTGGTCTGAGAAGAGGGAAGAGGCAGAG

ACGCGTACGCGGCCGCTCGAGCAGAACTCATCTCAGAAGAGGATCTGGCAGCAAATGATATCCTGGATT
 ACAAGGATGACGACGATAAGGTTTAA

Protein Sequence:

>RC204333 protein sequence
 Red=Cloning site Green=Tags(s)

MRSEKEGAGGLRAAVAARGPSGREKLSALEVQFHRDSQQQEAETPPTSSSGCGGGAGKPREEKRTALSKV
 VIRRLPPGLTKEQLEELRPLPAHDYFEFFAADLSLYPHLYSRAYINFRNPDDILLFRDRFDGYIFLDSK
 DPEYKKFLETYCVVEEKT SANPETLLGEMEAKTREL IARRTTPLEIYIKNRKLEKQRIREEKREERRRRE
 LEKKRLREEEKKRRRREEERCKKETDKQKKIAEKEVRIKLLKKPEKGEEPTTEPKKERGEEIDTGGGKQE
 SCAPGAVVKARPMESLEEPQETSHSGSDKEHRDVERSQQEQESEAQRYHVDGRRHRAHHEPERLSRRSE
 DEQRWKGPGQDRGKKGSQDSGAPGEAMERLGRAQRCDSPAPRKERLANKDRPALQLYDPGARFRAREC
 GGNRRICKAEGSGTGPEKREEAE

TRTRPLE**QKL**ISEEDLAANDILDYKDDDDKV

Chromatograms:

https://cdn.origene.com/chromatograms/mk6743_f03.zip

Restriction Sites:

SgfI-MluI

Cloning Scheme:


ACCN: NM_080687

ORF Size: 1329 bp

OTI Disclaimer: The molecular sequence of this clone aligns with the gene accession number as a point of reference only. However, individual transcript sequences of the same gene can differ through naturally occurring variations (e.g. polymorphisms), each with its own valid existence. This clone is substantially in agreement with the reference, but a complete review of all prevailing variants is recommended prior to use. [More info](#)

OTI Annotation: This clone was engineered to express the complete ORF with an expression tag. Expression varies depending on the nature of the gene.

Components: The ORF clone is ion-exchange column purified and shipped in a 2D barcoded Matrix tube containing 10ug of transfection-ready, dried plasmid DNA (reconstitute with 100 ul of water).

Reconstitution Method:

1. Centrifuge at 5,000xg for 5min.
2. Carefully open the tube and add 100ul of sterile water to dissolve the DNA.
3. Close the tube and incubate for 10 minutes at room temperature.
4. Briefly vortex the tube and then do a quick spin (less than 5000xg) to concentrate the liquid at the bottom.
5. Store the suspended plasmid at -20°C. The DNA is stable for at least one year from date of shipping when stored at -20°C.

Note: Plasmids are not sterile. For experiments where strict sterility is required, filtration with 0.22um filter is required.

RefSeq: [NM_080687.3](#)

RefSeq Size: 2303 bp

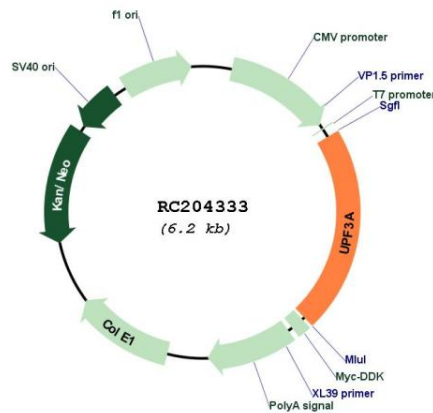
RefSeq ORF: 1332 bp

Locus ID: 65110

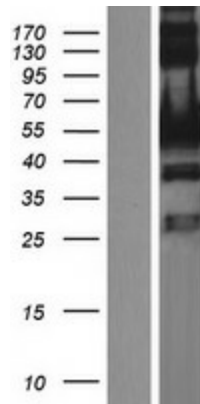
UniProt ID: [Q9H1J1](#)
Cytogenetics: 13q34
MW: 51 kDa

Gene Summary: This gene encodes a protein that is part of a post-splicing multiprotein complex involved in both mRNA nuclear export and mRNA surveillance. The encoded protein is one of two functional homologs to yeast Upf3p. mRNA surveillance detects exported mRNAs with truncated open reading frames and initiates nonsense-mediated mRNA decay (NMD). When translation ends upstream from the last exon-exon junction, this triggers NMD to degrade mRNAs containing premature stop codons. This protein binds to the mRNA and remains bound after nuclear export, acting as a nucleocytoplasmic shuttling protein. It forms with Y14 a complex that binds specifically 20 nt upstream of exon-exon junctions. This gene is located on the long arm of chromosome 13. Several splice variants encoding different isoforms have been found for this gene. [provided by RefSeq, Jul 2017]

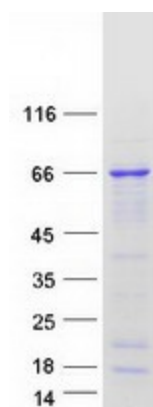
Product images:



Circular map for RC204333



Western blot validation of overexpression lysate (Cat# [LY409111]) using anti-DDK antibody (Cat# [TA50011-100]). Left: Cell lysates from untransfected HEK293T cells; Right: Cell lysates from HEK293T cells transfected with RC204333 using transfection reagent MegaTran 2.0 (Cat# [TT210002]).



Coomassie blue staining of purified UPF3A protein (Cat# [TP304333]). The protein was produced from HEK293T cells transfected with UPF3A cDNA clone (Cat# RC204333) using MegaTran 2.0 (Cat# [TT210002]).