

## Product datasheet for **RC204332**

### **SMPDL3A (NM\_006714) Human Tagged ORF Clone**

#### **Product data:**

Product Type:	Expression Plasmids
Product Name:	SMPDL3A (NM_006714) Human Tagged ORF Clone
Tag:	Myc-DDK
Symbol:	SMPDL3A
Synonyms:	ASM3A; ASML3a; yR36GH4.1
Mammalian Cell Selection:	Neomycin
Vector:	pCMV6-Entry (PS100001)
E. coli Selection:	Kanamycin (25 ug/mL)



[View online »](#)

**ORF Nucleotide Sequence:**

>RC204332 ORF sequence  
 Red=Cloning site Blue=ORF Green=Tags(s)

TTTTGTAATACGACTCACTATAGGGCGGCCGGGAATTCGTCGACTGGATCCGGTACCGAGGAGATCTGCC  
 GCC**CGGATCGCC**

ATGGCGCTGGTGGCGCACTCGTCTGCTGCTGCTGACTGCCTGGCACTGCCGCTCCGGCCTCGGGCTGC  
 CCGTGGCGCCCGCAGGCGCAGGAATCCTCCTCCGGCGATAGGACAGTTTTGGCATGTGACTGACTTACA  
 CTTAGACCCTACTTACCACATCACAGATGACCACAAAAAGTGTGTGCTTCATCTAAAGGTGCAAATGCC  
 TCCAACCTGGCCCTTTTGGAGATGTTCTGTGTGATTCTCCATATCAACTATTTTGTGAGCATTGATT  
 TTATTAATAAATTCTGGACAAGAAGCATCTTTCATGATATGGACAGGGGATAGCCACCTCATGTTCTGT  
 ACCTGAACCTCAACAGACACTGTTATAAATGTGATCAATATGACAACCACCATCCAGAGTCTCTTT  
 CCAAACTCCAGGTTTTCCCTGCGCTGGGTAATCATGACTATTGGCCACAGGATCAACTGCCTGTAGTCA  
 CCAGTAAAGTGTACAATGCAGTAGCAAACCTCTGGAAACCATGGTAGATGAAGAAGCTATTAGTACTTT  
 AAGGAAAGGTGGTTTTTATTCACAGAAAGTTACAATAATCCAAACCTTAGGATCATCAGCTAAACACA  
 AACTTGTACTACGGCCAAATATAATGACTGAACAAGACTGACCCAGCCAACAGTTTGAATGGCTAG  
 AAAGTACATTGAACAACCTCTCAGCAGAATAAGGAGAAGGTGTATATCATAGCACATGTTCCAGTGGGTA  
 TCTGCCATCTTACAGAACATCACAGCAATGAGAGAATACTATAATGAGAAATTGATAGATATTTTTCAA  
 AAATACAGTGTGTCATTGCAGGACAATTTTATGGACACACTCACAGAGACAGCATTATGGTTCTTTTCAG  
 ATAAAAAGGAAGTCCAGTAAATCTTTGTTTGTGGCTCCTGCTGTTACACCAGTGAAGAGTGTTTTAGA  
 AAAACAGACCAACAATCCTGGTATCAGACTGTTTCAGTATGATCCTCGTGATTATAAATTATTGGATATG  
 TTGAGTATTACTTGAATCTGACAGAGGCGAATCTAAAGGGAGAGTCCATCTGGAAGCTGGAGTATATCC  
 TGACCCAGACCTACGACATTGAAGATTTGCAGCCGGAAAGTTTATATGGATTAGCTAAACAATTTACAAT  
 CCTAGACAGTAAGCAGTTTATAAAATACTACAATTACTTCTTTGTGAGTTATGACAGCAGTGAACATGT  
 GATAAGACATGTAAGGCCTTTCAGATTTGTGCAATTATGAATCTTGATAATATTTCTATGCAGATTGCC  
 TCAAACAGCTTTTATAAAGCACAAATTAC

**ACGCGT**ACGCGGCCGCTCGAGCAGAACTCATCTCAGAAGAGGATCTGGCAGCAAATGATATCCTGGATT  
 ACAAGGATGACGACGATAAGGTTTAA

**Protein Sequence:**

>RC204332 protein sequence  
 Red=Cloning site Green=Tags(s)

MALVRALVCLLTAWHCRSGLPLVAPAGGRNPPAIGQFWHVTDLHLDPTYHITDDHTKVCASSKGANA  
 SNPGPFQDVLCDSPYQLILSAFDFIKNSGQEASFMWTGDSPPHPVPELSTDTVINVTNMTTIIQSLF  
 PNLQVFPALGNHDYWPQDQLPVVTSKVYNAVANLWKPWLDEEAISTLRKGGFYQKVTNPNLRIISLNT  
 NLYYGPNIIMTLNKTDPAHQFEWLESTLNSQNKQKVVYIIAHVPVGYLPSSQNTAMREYYNEKLIDIFQ  
 KYSDVIAGQFYGHTRDSIMVLSDKKGSPVNSLFAVAVTPVKSVEKQTNNGIRLFQYDPRDYKLLDM  
 LQYYLNLTEANLKGESIWKLEYILTQTYDIEDLQPESLYGLAKQFTILDQKQFIKYNYFFVSYDSSVTC  
 DKTCFAFQICAIMNLDNISYADCLKQLYIKHNY

**TR**TRPLEQKLISEEDLAANDILDYKDDDDKV

**Chromatograms:**

[https://cdn.origene.com/chromatograms/mk6174\\_a08.zip](https://cdn.origene.com/chromatograms/mk6174_a08.zip)

**Restriction Sites:**

Sgfl-MluI



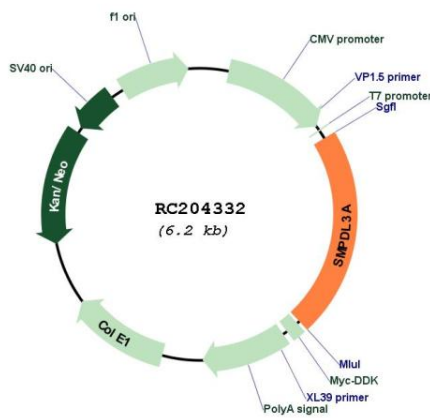
**Domains:** Metallophos

**Protein Families:** Secreted Protein

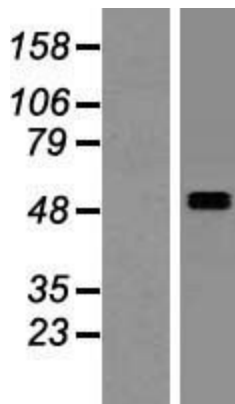
**MW:** 51.3 kDa

**Gene Summary:** Has in vitro nucleotide phosphodiesterase activity with nucleoside triphosphates, such as ATP (PubMed:25288789, PubMed:26783088). Has in vitro activity with p-nitrophenyl-TMP (PubMed:25288789). Has lower activity with nucleoside diphosphates, and no activity with nucleoside monophosphates (PubMed:25288789, PubMed:26783088). Has in vitro activity with CDP-choline, giving rise to CMP and phosphocholine. Has in vitro activity with CDP-ethanolamine (PubMed:26783088). Does not have sphingomyelin phosphodiesterase activity (PubMed:25288789, PubMed:26783088).[UniProtKB/Swiss-Prot Function]

**Product images:**



Circular map for RC204332



Western blot validation of overexpression lysate (Cat# [LY416454]) using anti-DDK antibody (Cat# [TA50011-100]). Left: Cell lysates from untransfected HEK293T cells; Right: Cell lysates from HEK293T cells transfected with RC204332 using transfection reagent MegaTran 2.0 (Cat# [TT210002]).