

Product datasheet for **RC204330L3V**

Alkaline Phosphatase (ALPPL2) (NM_031313) Human Tagged ORF Clone Lentiviral Particle

Product data:

Product Type:	Lentiviral Particles
Product Name:	Alkaline Phosphatase (ALPPL2) (NM_031313) Human Tagged ORF Clone Lentiviral Particle
Symbol:	Alkaline Phosphatase
Synonyms:	ALPPL; ALPPL2; GCAP
Mammalian Cell Selection:	Puromycin
Vector:	pLenti-C-Myc-DDK-P2A-Puro (PS100092)
Tag:	Myc-DDK
ACCN:	NM_031313
ORF Size:	1596 bp
ORF Nucleotide Sequence:	The ORF insert of this clone is exactly the same as(RC204330).
OTI Disclaimer:	The molecular sequence of this clone aligns with the gene accession number as a point of reference only. However, individual transcript sequences of the same gene can differ through naturally occurring variations (e.g. polymorphisms), each with its own valid existence. This clone is substantially in agreement with the reference, but a complete review of all prevailing variants is recommended prior to use. More info
OTI Annotation:	This clone was engineered to express the complete ORF with an expression tag. Expression varies depending on the nature of the gene.
RefSeq:	NM_031313.1 , NP_112603.1
RefSeq Size:	2485 bp
RefSeq ORF:	1599 bp
Locus ID:	251
UniProt ID:	P10696
Cytogenetics:	2q37.1
Protein Families:	Druggable Genome
Protein Pathways:	Folate biosynthesis, Metabolic pathways

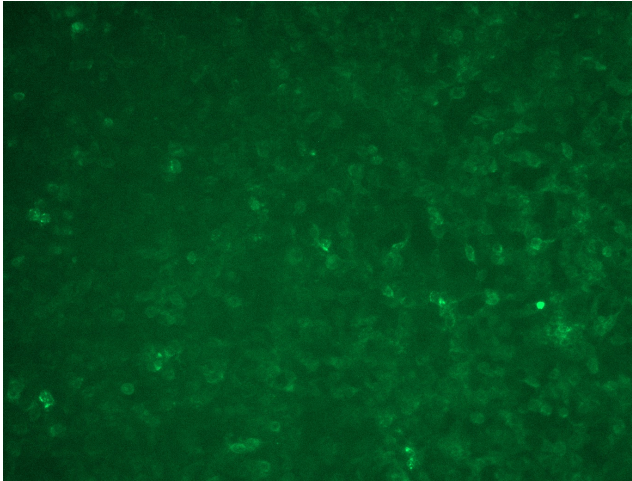


[View online »](#)

MW: 55.2 kDa

Gene Summary: There are at least four distinct but related alkaline phosphatases: intestinal, placental, placental-like, and liver/bone/kidney (tissue non-specific). The product of this gene is a membrane bound glycosylated enzyme, localized to testis, thymus and certain germ cell tumors, that is closely related to both the placental and intestinal forms of alkaline phosphatase. [provided by RefSeq, Jul 2008]

Product images:



[RC204330L3] was used to prepare Lentiviral particles using [TR30037] packaging kit. HEK293T cells were transduced with RC204330L3V particle to overexpress human ALPG-Myc-DDK fusion protein.