

Product datasheet for **RC204330**

Alkaline Phosphatase (ALPPL2) (NM_031313) Human Tagged ORF Clone

Product data:

Product Type:	Expression Plasmids
Product Name:	Alkaline Phosphatase (ALPPL2) (NM_031313) Human Tagged ORF Clone
Tag:	Myc-DDK
Symbol:	Alkaline Phosphatase
Synonyms:	ALPPL; ALPPL2; GCAP
Mammalian Cell Selection:	Neomycin
Vector:	pCMV6-Entry (PS100001)
E. coli Selection:	Kanamycin (25 ug/mL)



[View online »](#)

ORF Nucleotide Sequence:

>RC204330 representing NM_031313
 Red=Cloning site Blue=ORF Green=Tags(s)

TTTTGTAATACGACTCACTATAGGGCGGCCGGAATTCGTCGACTGGATCCGGTACCGAGGAGATCTGCC
 GCC**GCGATCGCC**

ATGACAGGGCCCTGGGTGCTGCTCCTGCTGGCCCTGAGGCTACAGCTCTCCCTGGGCATCATCCCAGTTG
 AGGAGGAGAACCCGGACTTCTGGAACCGCCAGGCAGCCGAGGCCCTGGGTGCCGCAAGAAGCTGCAGCC
 TGCACAGACAGCCGCAAGAACCTCATCATCTTCTGGGTGACGGGATGGGGGTGTCTACGGTGACAGCT
 GCCAGGATCCTAAAAGGGCAGAAGAAGGACAACTGGGGCCTGAGACCTTCTGGCCATGGACCGTTCC
 CGTACGTGGTCTGTCCAAGACATACAGTGTAGACAAGCATGTGCCAGACAGTGGAGCCACAGCCACGGC
 CTACCTGTGCGGGTCAAGGGCAACTCCAGACCATTGGCTTGAGTGCAGCCGCCGCTTTAACAGTGC
 AACACGACACGCGCAACGAGGTCATCTCCGTGGTGAATCGGGCAAGAAAGCAGGAAAGTCAGTGGGAG
 TGGTAACCACCACAGGGTGCAGCATGCCTCGCCAGCCGGCACCTACGCCACACGGTGAACCGCAACTG
 GTACTCGGATGCCGACGTGCCTGCCTCGGCCCGCAGGAGGGTGCAGGACATCGCCACGACGCTCATC
 TCCAACATGGACATTGATGTGATCCTAGGTGGAGGCCAAAGTACATGTTTCCATGGGGACCCAGACC
 CTGAGTACCCAGATGACTACAGCAAGGTGGGACCAGGCTGGACGGGAAGTCTGGTGCAGGAATGGCT
 GGCGAAGCACCAGGGTGCCCGGTACGTGTGGAACCGCACTGAGCTCCTGCAGGCTTCCCTGGACCCGTCT
 GTGACCCATCTCATGGGTCTCTTTGAGCCTGGAGACATGAAATACGAGATCCACCAGACTCCACACTGG
 ACCCTCCTGATGGAGATGACAGAGGCTGCCCTGCGCCTGTGAGCAGGAACCCCGCGGCTTCTTCTCT
 CTTGTTGAGGGTGGTGCATCGACCATGGTTCATGAAAGCAGGGCTTACCGGCACTGACTGAGACG
 ATCATGTTGACGACGCCATTGAGAGGGCGGCCAGCTACCAGCGAGGAGGACACGCTGAGCCTCGTCA
 CTGCCGACCACTCCACGCTTCTCCTTCGGAGGCTACCCCTGCGAGGGAGCTCCATCTCGGGCTGGC
 CCTGGCAAGGCCCGGGACAGGAAGGCCTACACGGTCTCCTATACGGAACGGTCCAGGCTATGTGCTC
 AAGGACGCGCCCGCCGGATGTTACCGAGAGCGAGAGCGGGAGCCCGAGTATCGGCAGCAGTCAGCAG
 TGCCCTGGACGGAGAGACCCACGCAGGCGAGGACGTGGCGGTGTTGCGCGCGGGCCGACGGCGCACCT
 GGTTCACGGCGTGACAGGACAGACCTTCATAGCGCACGTCATGGCCTTCGCCCTGCCTGGAGCCCTAC
 ACCGCTGCGACCTGGCGCCCCCGCCGGCACCCGACCGCGCACCCGGGGCCGTCCGTGGTCCCCG
 CGTTGCTCCTCTGCTGGCAGGGACCTTGTGCTGCTGGGACGGCCACTGCTCC

ACGCGTACGCGGCCGCTCGAGCAGAACTCATCTCAGAAGAGGATCTGGCAGCAAATGATATCCTGGATT
 ACAAGGATGACGACGATAAGGTTTAA

Protein Sequence:

>RC204330 representing NM_031313
 Red=Cloning site Green=Tags(s)

MQGPWVLLLLLGLRLQLSLGIIPVEEENPDFWNRQAAEALGAAKKLQPAQTAAKNLIIFLDGDMGVSTVTA
 ARILKQKDKLGPETFLAMDRFPYVALSKTYSVDKHVPDSGATATAYLCGVKGNFQTIGLSAAARFNQC
 NTRRGNEVISVNRKAKKAGKSVGVTTRVQHASPAGTYAHTVNRNWYSADVPASARQEGCQDIATQLI
 SNMDIDVILGGGRKYMFPMPGTPDPEYDDYSQGGTRLDGKLVQEWLAKHQGARYVWNRTELLQASLDPS
 VTHLMGLFEPGDMKYEIHRDSTLDPSLMEMTEAALRLLSRNPRGFFLVEGGRIDHGHESRAYRALTET
 IMFDDAIERAGQLTSEEDTSLVTADHSHVFSFGGYPLRGSSIFGLAPGKARDRKYTVLLYGNPGYVL
 KDGARPDVTESESGSPEYRQSAVPLDGETHAGEDVAVFARGPQAHLVHGVQEQTFAHVMAFAACLEPY
 TACDLAPPAGTTDAAHPGPSVVPALLPLLAGTLLLLGTATAP

TRTRPLEQKLISEEDLAANDILDYKDDDDKV

Chromatograms:

https://cdn.origene.com/chromatograms/mg3842_c09.zip

Restriction Sites:

Sgfl-MluI

Cloning Scheme:


ACCN: NM_031313

ORF Size: 1596 bp

OTI Disclaimer: The molecular sequence of this clone aligns with the gene accession number as a point of reference only. However, individual transcript sequences of the same gene can differ through naturally occurring variations (e.g. polymorphisms), each with its own valid existence. This clone is substantially in agreement with the reference, but a complete review of all prevailing variants is recommended prior to use. [More info](#)

OTI Annotation: This clone was engineered to express the complete ORF with an expression tag. Expression varies depending on the nature of the gene.

Components: The ORF clone is ion-exchange column purified and shipped in a 2D barcoded Matrix tube containing 10ug of transfection-ready, dried plasmid DNA (reconstitute with 100 ul of water).

- Reconstitution Method:**
1. Centrifuge at 5,000xg for 5min.
 2. Carefully open the tube and add 100ul of sterile water to dissolve the DNA.
 3. Close the tube and incubate for 10 minutes at room temperature.
 4. Briefly vortex the tube and then do a quick spin (less than 5000xg) to concentrate the liquid at the bottom.
 5. Store the suspended plasmid at -20°C. The DNA is stable for at least one year from date of shipping when stored at -20°C.

Note: Plasmids are not sterile. For experiments where strict sterility is required, filtration with 0.22um filter is required.

RefSeq: [NM_031313.1](#), [NP_112603.1](#)

RefSeq Size: 2485 bp

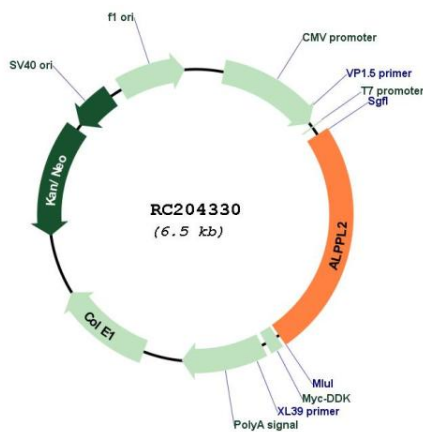
RefSeq ORF: 1599 bp

Locus ID: 251

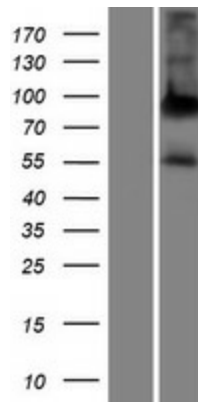
UniProt ID: [P10696](#)
Cytogenetics: 2q37.1
Protein Families: Druggable Genome
Protein Pathways: Folate biosynthesis, Metabolic pathways
MW: 55.2 kDa

Gene Summary: There are at least four distinct but related alkaline phosphatases: intestinal, placental, placental-like, and liver/bone/kidney (tissue non-specific). The product of this gene is a membrane bound glycosylated enzyme, localized to testis, thymus and certain germ cell tumors, that is closely related to both the placental and intestinal forms of alkaline phosphatase. [provided by RefSeq, Jul 2008]

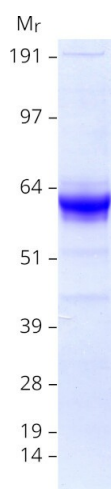
Product images:



Circular map for RC204330



Western blot validation of overexpression lysate (Cat# [LY410562]) using anti-DDK antibody (Cat# [TA50011-100]). Left: Cell lysates from untransfected HEK293T cells; Right: Cell lysates from HEK293T cells transfected with RC204330 using transfection reagent MegaTran 2.0 (Cat# [TT210002]).



Coomassie blue staining of purified ALPG protein (Cat# [TP304330]). The protein was produced from HEK293T cells transfected with ALPG cDNA clone (Cat# RC204330) using MegaTran 2.0 (Cat# [TT210002]).