

Product datasheet for **RC204326**

CRLF3 (NM_015986) Human Tagged ORF Clone

Product data:

| | |
|---------------------------|---|
| Product Type: | Expression Plasmids |
| Product Name: | CRLF3 (NM_015986) Human Tagged ORF Clone |
| Tag: | Myc-DDK |
| Symbol: | CRLF3 |
| Synonyms: | CREME-9; CREME9; CRLM9; CYTOR4; FRWS; p48.2 |
| Mammalian Cell Selection: | Neomycin |
| Vector: | pCMV6-Entry (PS100001) |
| E. coli Selection: | Kanamycin (25 ug/mL) |



[View online »](#)

ORF Nucleotide Sequence:

>RC204326 ORF sequence
 Red=Cloning site Blue=ORF Green=Tags(s)

TTTTGTAATACGACTCACTATAGGGCGGCCGGAATTCGTCGACTGGATCCGGTACCGAGGAGATCTGCC
 GCC**CGCATCGCC**

ATGAGGGGGCGATGGAGCTGGAGCCTGAGCTGCTGTTGCAGGAGGCCCGGAGAACCTGGAGGCAGCGC
 AGAGCTACCGGGCGGAGCTGGGTCAACGGCTTGAGGGGCTGCGTGAGGCGCGGAGGCAGATCAAAGAAAG
 TGCATCACAGACAAGGGATGTTCTCAAACAGCATTTTAATGATTTAAAGGGAACCCCTGGAAAGCTCCTG
 GATGAGCGATTGGTGACCCTTTTGAAGAGGTGGACACCATTGAACAGGAGACCATTAAACCACTAGATG
 ACTGCCAGAAGCTCATAGAACACGGAGTCAACTGCAGAGGACTTAGTCCGAGAAGGTGAAATCGCCAT
 GCTTGGTGGTGTGGGAGAAGAGAATGAGAACTGTGGAGCTTTACAAAAAGGCCTCGCACATTCAGTTG
 GACAGCTTACCAGAAGTACCTTTACTGGTTGATGTGCCTGTTTTATCTGCTCAGTTGGATGACTCAATTC
 TTAACATAGTAAAGACCACATTTTAAGCATGGAACAGTAGCATCTCGCCACCAGTACAGATAGAAGA
 ACTAATAGAGAAACCTGGAGGCATCATTGTACGATGGTGAAGGTGGATGATGACTTTACAGCCCAAGAT
 TACAGGCTCCAGTTTCGTAATGTACTTCAAATCATTTTGAGGATGTATATGTAGTTCTGAAACTGAAT
 TCATAGTATTGCACATAGACCCCAACGTTGATTACCAGTTCAGAGTCTGCGCCCGAGGAGATGGCCGACA
 GGAGTGGAGTCCCTGGAGTGTCCCCAGATAGGTCATTCCACATTTGGTGCCTCATGAGTGGACAGCTGGT
 TTTGAGGGGTACAGTCTGAGCAGTCGAAGAAATATAGCACTTCGGAACGATTCTGAATCATCGGGTGTTT
 TCTACTCCAGAGCTCCGACTTATTTCTGTGGGCAGACATTAACATTCAGAGTTGAAACTGTGGGACAGCC
 AGACAGAAGAGATAGCATAGGAGTGTGTGCAGAAAAACAGGATGGATATGACTCTCTGCAGCGGGATCAA
 GCTGTGTGCATTAGTACAAATGGTGCAGTTTTGTCAATGGAAAAGAAATGACAAATCAGTTACCCGCGAG
 TTACTTTGGGTCCACTGTCACGTTTGACATTGAAGCCGTGACTCTAGGAACCACCGTAATAATGAAGG
 TGGACACTTCAAGCTTCGAGTAACTATAAGTTCAAATAATAGAGAAGTGGTTTTTACTGTTACTTGTAT
 CAGTCTTGTGTTCTCTTTACTTTGGATGCTCATTTTTCTATCCTGGATGAAAAGTGTAGTGTTT

ACGCGTACGCGGCCGCTCGAGCAGAAACTCATCTCAGAAGAGGATCTGGCAGCAATGATATCCTGGATT
 ACAAGGATGACGACGATAAGGTTTAA

Protein Sequence:

>RC204326 protein sequence
 Red=Cloning site Green=Tags(s)

MRGAMELEPELLLQEARENVEAAQSYRRELGHRLEGLREARRQIKESASQTRDVLKQHFNDLKGTLGKLL
 DERLVTLLQEVDTIEQETIKPLDDCQKLIIEHGNTAEDLVREGEIAMLGGVGEENEKLSFTKKASHIQL
 DSLPEVPLLVDVPLSAQLDDSLNIVKDHIFKHGTVASRPPVQIEELIEKPGGIIVRWCKVDDDFTAQD
 YRLQFRKCTSNHFEDVYVGSETEFIVLHIDPNVDYQFRVCARGDGRQEWSPWVQIGHSTLVPHEWTAG
 FEGYLSRRRNIALRNDESSGVLYSRAPTYFCGQTLFRVETVGPDRRDSIGVCAEKQDGYDSLQRDQ
 AVCI STNGAVFVNGKEMTNQLPAVTSGSTVTFDIEAVTLGTTSNNEGGHFKLRVTISSNNREVVFDFWLLD
 QSCGSLYFGCSFFYPGWKVLVF

TRTRPLEQKLI SEEDLAANDILDYKDDDDKV

Chromatograms:

https://cdn.origene.com/chromatograms/mk6427_d03.zip

Restriction Sites:

Sgfl-Mlul

Cloning Scheme:


ACCN: NM_015986

ORF Size: 1326 bp

OTI Disclaimer: The molecular sequence of this clone aligns with the gene accession number as a point of reference only. However, individual transcript sequences of the same gene can differ through naturally occurring variations (e.g. polymorphisms), each with its own valid existence. This clone is substantially in agreement with the reference, but a complete review of all prevailing variants is recommended prior to use. [More info](#)

OTI Annotation: This clone was engineered to express the complete ORF with an expression tag. Expression varies depending on the nature of the gene.

Components: The ORF clone is ion-exchange column purified and shipped in a 2D barcoded Matrix tube containing 10ug of transfection-ready, dried plasmid DNA (reconstitute with 100 ul of water).

Reconstitution Method:

1. Centrifuge at 5,000xg for 5min.
2. Carefully open the tube and add 100ul of sterile water to dissolve the DNA.
3. Close the tube and incubate for 10 minutes at room temperature.
4. Briefly vortex the tube and then do a quick spin (less than 5000xg) to concentrate the liquid at the bottom.
5. Store the suspended plasmid at -20°C. The DNA is stable for at least one year from date of shipping when stored at -20°C.

RefSeq: [NM_015986.4](#)

RefSeq Size: 2954 bp

RefSeq ORF: 1329 bp

Locus ID: 51379

UniProt ID: [Q8IUI8](#)

Cytogenetics: 17q11.2

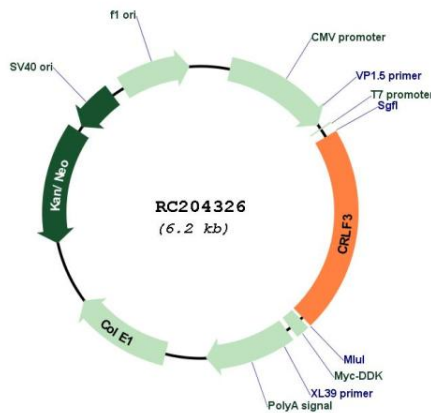
Domains: FN3

Protein Families: Druggable Genome

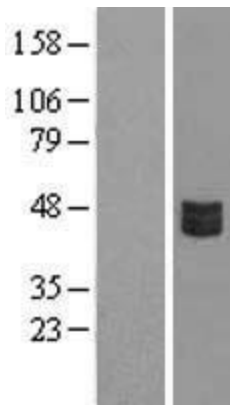
MW: 49.8 kDa

Gene Summary: This gene encodes a cytokine receptor-like factor that may negatively regulate cell cycle progression at the G0/G1 phase. Studies of the related rat protein suggest that it may regulate neuronal morphology and synaptic vesicle biogenesis. This gene is one of several genes located in the neurofibromatosis type 1 tumor suppressor region on the q arm of chromosome 17, a region that is subject to microdeletions, duplications, chromosomal breaks and rearrangements. Alternative splicing of this gene results in multiple transcript variants. Related pseudogenes have been identified on chromosomes 2 and 5. [provided by RefSeq, Aug 2012]

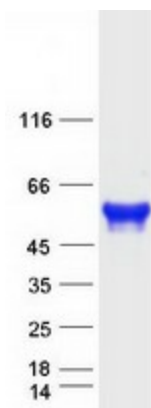
Product images:



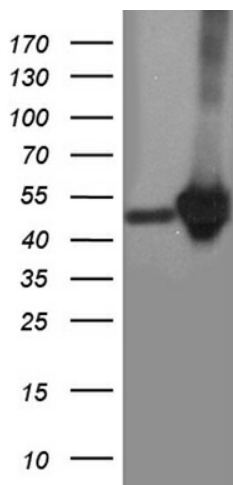
Circular map for RC204326



Western blot validation of overexpression lysate (Cat# [LY414260]) using anti-DDK antibody (Cat# [TA50011-100]). Left: Cell lysates from untransfected HEK293T cells; Right: Cell lysates from HEK293T cells transfected with RC204326 using transfection reagent MegaTran 2.0 (Cat# [TT210002]).



Coomassie blue staining of purified CRLF3 protein (Cat# [TP304326]). The protein was produced from HEK293T cells transfected with CRLF3 cDNA clone (Cat# RC204326) using MegaTran 2.0 (Cat# [TT210002]).



HEK293T cells were transfected with the pCMV6-ENTRY control (Cat# [PS100001], Left lane) or pCMV6-ENTRY CRLF3 (Cat# RC204326, Right lane) cDNA for 48 hrs and lysed. Equivalent amounts of cell lysates (5 ug per lane) were separated by SDS-PAGE and immunoblotted with anti-CRLF3 (Cat# [TA812350]). Positive lysates [LY414260] (100ug) and [LC414260] (20ug) can be purchased separately from OriGene.