

Product datasheet for RC204324

RHOH (NM_004310) Human Tagged ORF Clone

Product data:

Product Type: Expression Plasmids
Product Name: RHOH (NM_004310) Human Tagged ORF Clone
Tag: Myc-DDK
Symbol: RHOH
Synonyms: ARHH; TTF
Mammalian Cell Selection: Neomycin
Vector: pCMV6-Entry (PS100001)
E. coli Selection: Kanamycin (25 ug/mL)
ORF Nucleotide Sequence: >RC204324 ORF sequence
 Red=Cloning site Blue=ORF Green=Tags(s)

TTTTGTAATACGACTCACTATAGGGCGGCCGGAATTCGTCGACTGGATCCGGTACCGAGGAGATCTGCC
 GCC**CGATCGCC**

ATGCTGAGTTCATCAAGTGCCTGTTGGTGGGCGACTCTGCTGTGGGAAAACCTCTCTGTTGGTGCCT
 TCACCTCCGAGACCTCCCGGAGGCCTACAAGCCACAGTGTACGAGAACACAGGGTGGACGTCTTCAT
 GGATGGCATCCAGATCAGCCTGGCCTCTGGACACAGCCGCAATGACGCCTTCAGAAGCATCCGGCC
 CTGTCCTACCAGCAGGCAGACGTGGTGTGCTGATGTGCTACTCTGTGGCCAACCATAACTATTCTGA
 TGAAGAACAAGTGGATTGGTGAATTAGGAGCAACTTGCCTGTACCCCTGTGCTGGTGGTGGCCACCCA
 GACTGACCAGCGGAGATGGGGCCACAGGGCCTCCTGCGTCAATGCCATGGAAGGGAAGAACTGGCC
 CAGGATGTGAGAGCAAGGGCTACCTGGAGTGTGCTCAGCCCTTAGCAATCGGGGAGTACAGCAGGTGTTG
 AGTGCGCGTCCGAAGTCCCGTCAACCAGGCCAGGAGACGAAACAGAAGGAGGCTCTTCTCCATCAATGA
 TGCAAGATCTTC

ACGCGTACGCGGCCGCTCGAGCAGAACTCATCTCAGAAGAGGATCTGGCAGCAATGATATCCTGGATT
 ACAAGGATGACGACGATAAGGTTTAA

Protein Sequence: >RC204324 protein sequence
 Red=Cloning site Green=Tags(s)

MLSSIKCVLVGDSAVGKTSLLVRFTSETFPEAYKPTVYENTGVDVFMDCIQLSLGLWDTAGNDAFRSIRP
 LSYQQADVLMCYSVANHNSFLNLKNKWIGEIRSNLPCTPVLVATQTDQREMGPHRASCVNAMEGKLA
 QDVRAKGYLECSALSNRGVQQVFECVAVTAVNQARRRRRRRLFSINECKIF

TRTRPLEQKLISEEDLAANDILDYKDDDDKV



Chromatograms: https://cdn.origene.com/chromatograms/mk6060_b10.zip

Restriction Sites: SgfI-MluI

Cloning Scheme:



ACCN: NM_004310

ORF Size: 573 bp

OTI Disclaimer: The molecular sequence of this clone aligns with the gene accession number as a point of reference only. However, individual transcript sequences of the same gene can differ through naturally occurring variations (e.g. polymorphisms), each with its own valid existence. This clone is substantially in agreement with the reference, but a complete review of all prevailing variants is recommended prior to use. [More info](#)

OTI Annotation: This clone was engineered to express the complete ORF with an expression tag. Expression varies depending on the nature of the gene.

Components: The ORF clone is ion-exchange column purified and shipped in a 2D barcoded Matrix tube containing 10ug of transfection-ready, dried plasmid DNA (reconstitute with 100 ul of water).

Reconstitution Method:

1. Centrifuge at 5,000xg for 5min.
2. Carefully open the tube and add 100ul of sterile water to dissolve the DNA.
3. Close the tube and incubate for 10 minutes at room temperature.
4. Briefly vortex the tube and then do a quick spin (less than 5000xg) to concentrate the liquid at the bottom.
5. Store the suspended plasmid at -20°C. The DNA is stable for at least one year from date of shipping when stored at -20°C.

RefSeq: [NM_004310.5](#)

RefSeq Size: 2102 bp

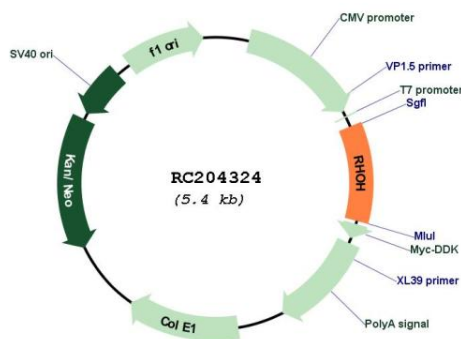
RefSeq ORF: 576 bp

Locus ID: 399

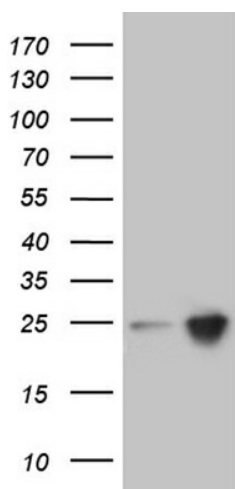
UniProt ID: [Q15669](#)
Cytogenetics: 4p14
Domains: ras, RAS, RHO, RAB
Protein Families: Transcription Factors
Protein Pathways: Leukocyte transendothelial migration
MW: 21.3 kDa

Gene Summary: The protein encoded by this gene is a member of the Ras superfamily of guanosine triphosphate (GTP)-metabolizing enzymes. The encoded protein is expressed in hematopoietic cells, where it functions as a negative regulator of cell growth and survival. This gene may be hypermutated or misexpressed in leukemias and lymphomas. Chromosomal translocations in non-Hodgkin's lymphoma occur between this locus and B-cell CLL/lymphoma 6 (BCL6) on chromosome 3, leading to the production of fusion transcripts. Alternative splicing in the 5' untranslated region results in multiple transcript variants that encode the same protein. [provided by RefSeq, May 2013]

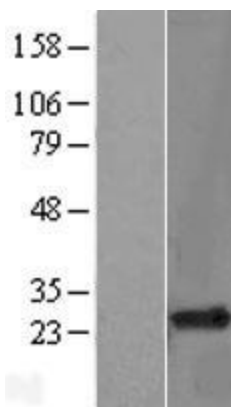
Product images:



Circular map for RC204324



HEK293T cells were transfected with the pCMV6-ENTRY control (Cat# [PS100001], Left lane) or pCMV6-ENTRY RHOH (Cat# RC204324, Right lane) cDNA for 48 hrs and lysed. Equivalent amounts of cell lysates (5 ug per lane) were separated by SDS-PAGE and immunoblotted with anti-RHOH (Cat# [TA809996])(1:2000). Positive lysates [LY401372] (100ug) and [LC401372] (20ug) can be purchased separately from OriGene.



Western blot validation of overexpression lysate (Cat# [LY401372]) using anti-DDK antibody (Cat# [TA50011-100]). Left: Cell lysates from untransfected HEK293T cells; Right: Cell lysates from HEK293T cells transfected with RC204324 using transfection reagent MegaTran 2.0 (Cat# [TT210002]).