

Product datasheet for RC204323

HuC (ELAVL3) (NM_001420) Human Tagged ORF Clone

Product data:

Product Type:	Expression Plasmids
Product Name:	HuC (ELAVL3) (NM_001420) Human Tagged ORF Clone
Tag:	Myc-DDK
Symbol:	HuC
Synonyms:	HUC; HUCL; PLE21
Mammalian Cell Selection:	Neomycin
Vector:	pCMV6-Entry (PS100001)
E. coli Selection:	Kanamycin (25 ug/mL)
ORF Nucleotide Sequence:	>RC204323 representing NM_001420 Red=Cloning site Blue=ORF Green=Tags(s)

TTTTGTAATACGACTCACTATAGGGCGGCCGGAATTCGTCGACTGGATCCGGTACCGAGGAGATCTGCC
GCC**CGATCGCC**

ATGGTCACTCAGATACTGGGGCCATGGAGTCTCAGGTGGGGGGGGCCCGGCCGGCCCGCCCTGCCCA
ACGGGCCACTCCTTGGTACAAATGGAGCCACTGACGACAGCAAGACCAACCTCATCGTCAACTACCTGCC
CCAGAACATGACCCAGGATGAGTTCAAGAGTCTCTTCGGCAGCATTGGCGACATCGAGTCTGCAAGTTG
GTTCCGGACAAGATCACAGGGCAGAGCCTTGGCTACGGGTTTGTGAATTTCTGACCCCAATGATGCAG
ACAAAGCCATCAACACCCTCAACGGCCTCAAATTACAGACGAAGACCATCAAGGTGTCTATGCCAGACC
CAGTTCAGCATCCATCCGGGATGCTAACCTGTAGTTCAGCGGGCTCCCAAGACCATGAGCCAGAAAGAG
ATGGAGCAGCTCTTCTCCAGTACGGCCGATCATCACGTCCCGCATCCTGGTGGACCAGGTACAGGTG
TCTCTCGGGGTGTGGGATTCATCCGCTTTGACAAGAGGATTGAGGCCGAAGAGGCTATCAAAGGACTGAA
TGGGCAGAAGCCGCTGGGCGCAGCTGAGCCATCACAGTCAAGTTCGCGAACAACCAAGTCAGAAGACG
GGCAGGCGTGTCAACCACCTTACCAGTATCCGCCCGGCGTACGAGGCCCCCTACACCATCAGA
CCCAGCGTTTCCGGCTGGACAATTTGCTCAACATGGCCTACGGCGTCAAGAGTCCCCTGTCGCTCATCGC
CAGGTTCTCGCCGATCGCCATCGATGGTATGAGCGGCCGCGGGCGTGGGCTGTGGGGGGCGCGCGC
GGCCCGGCTGGTGCATTTCTGTGTACAACCTGTACCGGAGGCAGACGAGAGCGTGTGTGGCAGCTGT
TCGGGCCCTTTGGGGCAGTCACCAACGTCAAGGTCAAGTTCATCCGTGATTTACCAACCAAGTCAAGGTTT
CGGCTTCTGTGACCATGACCAACTATGACGAGGGCCATGGCCATCGCCAGCCTGAACGGCTATCGCCTG
GGCAGCGCTGTGAGGTCTCCTTCAAGACCAGCAAACAGCACAAGGCG

ACGCGTACGCGGCCGCTCGAGCAGAAACTCATCTCAGAAGAGGATCTGGCAGCAAATGATATCCTGGATT
ACAAGGATGACGACGATAAGGTTTAA



[View online »](#)

Protein Sequence: >RC204323 representing NM_001420
Red=Cloning site Green=Tags(s)

MVTQILGAMESQVGGGPAGPALPNGPLLGTNGATDDSKTNLIVNYLPQNMTQDEFKSLFGSIGDIESCKL
 VRDKITGQSLGYGFVNYSDPNADKAINTLNLKLTQTKIKVSYARPSSASIRDANLYVSGLPKTM SQKE
 MEQLFSQYGRIITSRILVDQVTGVS RGVGFI RFDKRIEAEAEAIKGLNGQKPLGAAEPITVKFANNPSQKT
 GQALLTHLYQSSARRYAGPLHHQTQRFRLDNLN MAYGVKSPLSLIARFSP I AIDGMSGLAGVLSGGAA
 GAGWCIFVYNLSPEADESVLWQLFGPFAVTNVKVI RDFTTNKCKGFGFVTMTNYDEAAMAIASLNGYRL
 GERVLQVSFKTSKQHKA

TRTRPLEQKLISEEDLAANDILDYKDDDDKV

Chromatograms: https://cdn.origene.com/chromatograms/mk6430_b05.zip

Restriction Sites: SgfI-MluI

Cloning Scheme:



* The last codon before the Stop codon of the ORF

ACCN: NM_001420

ORF Size: 1101 bp

OTI Disclaimer: The molecular sequence of this clone aligns with the gene accession number as a point of reference only. However, individual transcript sequences of the same gene can differ through naturally occurring variations (e.g. polymorphisms), each with its own valid existence. This clone is substantially in agreement with the reference, but a complete review of all prevailing variants is recommended prior to use. [More info](#)

OTI Annotation: This clone was engineered to express the complete ORF with an expression tag. Expression varies depending on the nature of the gene.

Components: The ORF clone is ion-exchange column purified and shipped in a 2D barcoded Matrix tube containing 10ug of transfection-ready, dried plasmid DNA (reconstitute with 100 ul of water).

Reconstitution Method:

1. Centrifuge at 5,000xg for 5min.
2. Carefully open the tube and add 100ul of sterile water to dissolve the DNA.
3. Close the tube and incubate for 10 minutes at room temperature.
4. Briefly vortex the tube and then do a quick spin (less than 5000xg) to concentrate the liquid at the bottom.
5. Store the suspended plasmid at -20°C. The DNA is stable for at least one year from date of shipping when stored at -20°C.

Note: Plasmids are not sterile. For experiments where strict sterility is required, filtration with 0.22um filter is required.

RefSeq: [NM_001420.4](#)

RefSeq Size: 4682 bp

RefSeq ORF: 1104 bp

Locus ID: 1995

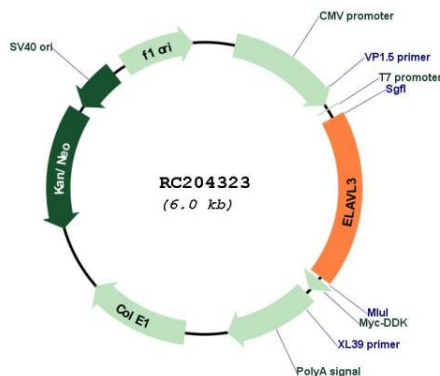
UniProt ID: [Q14576](#)

Cytogenetics: 19p13.2

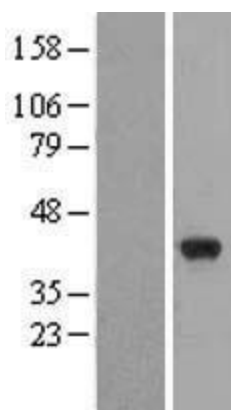
MW: 39.4 kDa

Gene Summary: A member of the ELAVL protein family, ELAV-like 3 is a neural-specific RNA-binding protein which contains three RNP-type RNA recognition motifs. The observation that ELAVL3 is one of several Hu antigens (neuronal-specific RNA-binding proteins) recognized by the anti-Hu serum antibody present in sera from patients with paraneoplastic encephalomyelitis and sensory neuronopathy (PEM/PSN) suggests it has a role in neurogenesis. Two alternatively spliced transcript variants encoding distinct isoforms have been found for this gene. [provided by RefSeq, Jul 2008]

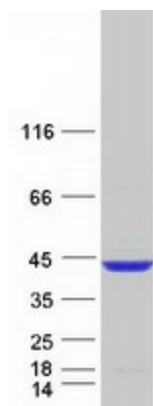
Product images:



Circular map for RC204323



Western blot validation of overexpression lysate (Cat# [LY419944]) using anti-DDK antibody (Cat# [TA50011-100]). Left: Cell lysates from untransfected HEK293T cells; Right: Cell lysates from HEK293T cells transfected with RC204323 using transfection reagent MegaTran 2.0 (Cat# [TT210002]).



Coomassie blue staining of purified ELAVL3 protein (Cat# [TP304323]). The protein was produced from HEK293T cells transfected with ELAVL3 cDNA clone (Cat# RC204323) using MegaTran 2.0 (Cat# [TT210002]).