

Product datasheet for **RC204321**

GNLY (NM_006433) Human Tagged ORF Clone

Product data:

Product Type: Expression Plasmids
Product Name: GNLY (NM_006433) Human Tagged ORF Clone
Tag: Myc-DDK
Symbol: GNLY
Synonyms: D2S69E; LAG-2; LAG2; NKG5; TLA519
Mammalian Cell Selection: Neomycin
Vector: pCMV6-Entry (PS100001)
E. coli Selection: Kanamycin (25 ug/mL)
ORF Nucleotide Sequence: >RC204321 ORF sequence
Red=Cloning site Blue=ORF Green=Tags(s)

TTTTGTAATACGACTCACTATAGGGCGGCCGGAATTCGTCGACTGGATCCGGTACCGAGGAGATCTGCC
GCC**CGATCGCC**

ATGGCTACCTGGGCCCTCCTGCTCCTTGCAGCCATGCTCCTGGCAACCCAGGTCTGGTCTTCTCTCGTC
TGAGCCCTGAGTACTACGACCTGGCAAGAGCCACCTGCGTGATGAGGAGAAATCCTGCCGTGCCTGGC
CCAGGAGGGCCCCAGGGTGACCTGTTGACCAAAACACAGGAGCTGGCCGTGACTACAGGACCTGTCTG
ACGATAGTCCAAAACCTGAAGAAGATGGTGGATAAGCCACCCAGAGAAGTGTTCGAATGCTGCGACCC
GGGTGTGTAGGACGGGGAGGTACGATGGCGGCACGTCTGCAGAAATTCATGAGGAGGTATCAGTCTAG
AGTTACCCAGGGCCTCGTGGCCGAGAACTGCCAGCAGATCTGTGAGGACCTCAGGTTGTATACCT
TCTACAGGTCCCCTC

ACGCGTACGCGGCCGCTCGAGCAGAACTCATCTCAGAAGAGGATCTGGCAGCAAATGATATCCTGGATT
ACAAGGATGACGACGATAAGGTTTAA

Protein Sequence: >RC204321 protein sequence
Red=Cloning site Green=Tags(s)

MATWALLLLAAMLLGNPGLVFSRLSPEYYDLARAHLRDEEKSCPCLAQEGPQGDLLTKTQELGRDYRTCL
TIVQKLLKMKVDKPTQRSVSNAAITRVCRTRGRSRWRDVCNFMRRYQSRVTQGLVAGETAQQICEDLRLCIP
STGPL

TRTRPLEQKLISEEDLAANDILDYKDDDDKV

Chromatograms: https://cdn.origene.com/chromatograms/mk6065_a07.zip



[View online »](#)

Restriction Sites: SgfI-MluI

Cloning Scheme:



ACCN: NM_006433

ORF Size: 435 bp

OTI Disclaimer: The molecular sequence of this clone aligns with the gene accession number as a point of reference only. However, individual transcript sequences of the same gene can differ through naturally occurring variations (e.g. polymorphisms), each with its own valid existence. This clone is substantially in agreement with the reference, but a complete review of all prevailing variants is recommended prior to use. [More info](#)

OTI Annotation: This clone was engineered to express the complete ORF with an expression tag. Expression varies depending on the nature of the gene.

Components: The ORF clone is ion-exchange column purified and shipped in a 2D barcoded Matrix tube containing 10ug of transfection-ready, dried plasmid DNA (reconstitute with 100 ul of water).

Reconstitution Method:

1. Centrifuge at 5,000xg for 5min.
2. Carefully open the tube and add 100ul of sterile water to dissolve the DNA.
3. Close the tube and incubate for 10 minutes at room temperature.
4. Briefly vortex the tube and then do a quick spin (less than 5000xg) to concentrate the liquid at the bottom.
5. Store the suspended plasmid at -20°C. The DNA is stable for at least one year from date of shipping when stored at -20°C.

RefSeq: [NM_006433.5](#)

RefSeq Size: 751 bp

RefSeq ORF: 438 bp

Locus ID: 10578

UniProt ID: [P22749](#)

Cytogenetics: 2p11.2

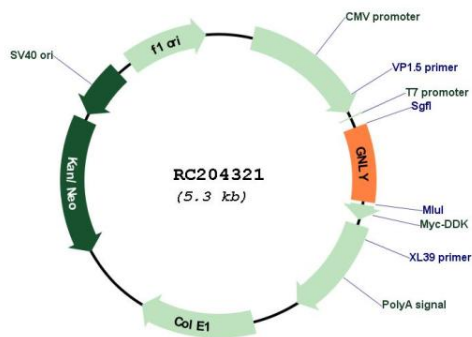
Domains: SapB_2, SAPB

Protein Families: Secreted Protein

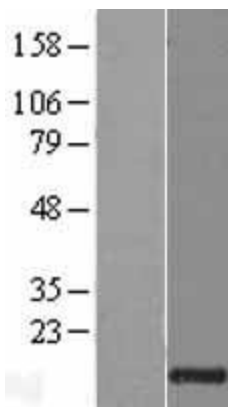
MW: 16.4 kDa

Gene Summary: The product of this gene is a member of the saposin-like protein (SAPLIP) family and is located in the cytotoxic granules of T cells, which are released upon antigen stimulation. This protein is present in cytotoxic granules of cytotoxic T lymphocytes and natural killer cells, and it has antimicrobial activity against *M. tuberculosis* and other organisms. Alternatively spliced transcript variants encoding different isoforms have been identified. [provided by RefSeq, Jul 2008]

Product images:



Circular map for RC204321



Western blot validation of overexpression lysate (Cat# [LY401936]) using anti-DDK antibody (Cat# [TA50011-100]). Left: Cell lysates from untransfected HEK293T cells; Right: Cell lysates from HEK293T cells transfected with RC204321 using transfection reagent MegaTran 2.0 (Cat# [TT210002]).



Coomassie blue staining of purified GNLY protein (Cat# [TP304321]). The protein was produced from HEK293T cells transfected with GNLY cDNA clone (Cat# RC204321) using MegaTran 2.0 (Cat# [TT210002]).