

Product datasheet for RC204316

SLC35C2 (NM_173073) Human Tagged ORF Clone

Product data:

Product Type:	Expression Plasmids
Product Name:	SLC35C2 (NM_173073) Human Tagged ORF Clone
Tag:	Myc-DDK
Symbol:	SLC35C2
Synonyms:	BA394O2.1; C20orf5; CGI-15; OVCOV1
Mammalian Cell Selection:	Neomycin
Vector:	pCMV6-Entry (PS100001)
E. coli Selection:	Kanamycin (25 ug/mL)
ORF Nucleotide Sequence:	>RC204316 ORF sequence Red=Cloning site Blue=ORF Green=Tags(s)

TTTTGTAATACGACTCACTATAGGGCGCCGGGAATTCGTCGACTGGATCCGGTACCGAGGAGATCTGCC
GCC**CGATCGCC**

ATGGGGAGGTGGGCCCTCGATGTGGCCTTTTTGTGGAAGGCGGTGTTGACCCTGGGGCTGGTGCTTCTCT
ACTACTGCTTCTCCATCGGCATCACCTTCTACAACAAGTGGCTGACAAAGAGCTTCCATTTCCCCTCTT
CATGACGATGCTGCACCTGGCCGTGATCTTCTCTTCTCCGCCCTGTCCAGGGCGCTGGTTCAGTGCTCC
AGCCACAGGGCCCGTGTGGTGTGAGCTGGGCCGACTACCTCAGAAGAGTGGCTCCACAGCTCTGGCGA
CGGCGCTTGACGTGGGCTTGCCAAGTGGAGCTTCTGTATGTCACCGTCTCGCTGTACACAATGACCAA
ATCCTCAGCTGTCTTTCATCTTGATCTTCTCTGATCTTCAAGCTGGAGGAGCTGTCCACACAGTTC
AACGTGGAGGGCTTCGCCTTGGTGTGGGGCCCTCGTTCATCGGTGGCATTTCGCTGGACCCTCACCCAGA
TGCTCCTGCAGAAGGCTGAACTCGGCCCTCCAGAATCCCATCGACACCATGTTCCACCTGCAGCCACTCAT
GTTCTGGGGCTCTTCCCTCTCTTTGCTGATTTGAAGGTCTCCATTTGTCCACATCTGAGAAAACTTC
CGTTTCCAGGACACAGGGCTGCTCCTGCGGGTACTTGGGAGCCTCTTCTTGGCGGGATTCTCGCCTTTG
GTTTGGGCTTCTCTGAGTTCTCCTGGTCTCCAGAACCTCCAGCCTCACTCTCCTATTGCCGGCATT
TAAGGAAGTCTGCACTTTGCTGTTGGCAGCTCATCTGCTGGGCGATCAGATCAGCCTCCTGAACTGGCTG
GGCTTCCGCTCTGCCTCTCGGGAATATCCCTCCAGTTGCCCTCAAAGCCCTGCATTCCAGAGGTGATG
GTGGCCCCAAGGCTTGAAGGGGCTGGGCTCCAGCCCCGACCTGGAGCTGCTGCTCCGGAGCAGCCAGCG
GGAGGAAGGTGACAATGAGGAGGAGGAGTACTTTGTGGCCAGGGGCAGCAG

ACGCGTACGCGGCCGCTCGAGCAGAACTCATCTCAGAAGAGGATCTGGCAGCAAATGATATCCTGGATT
ACAAGGATGACGACGATAAGGTTTAA



[View online »](#)

Reconstitution Method:

1. Centrifuge at 5,000xg for 5min.
2. Carefully open the tube and add 100ul of sterile water to dissolve the DNA.
3. Close the tube and incubate for 10 minutes at room temperature.
4. Briefly vortex the tube and then do a quick spin (less than 5000xg) to concentrate the liquid at the bottom.
5. Store the suspended plasmid at -20°C. The DNA is stable for at least one year from date of shipping when stored at -20°C.

RefSeq: [NM_173073.4](#)

RefSeq Size: 2262 bp

RefSeq ORF: 1035 bp

Locus ID: 51006

UniProt ID: [Q9NQQ7](#)

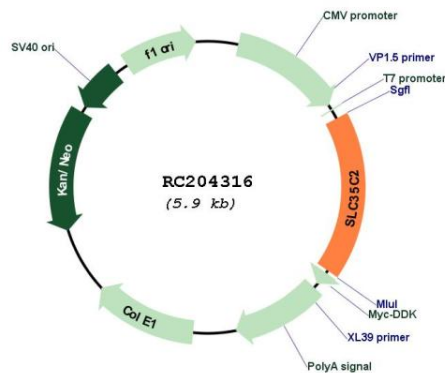
Cytogenetics: 20q13.12

Protein Families: Druggable Genome, Transmembrane

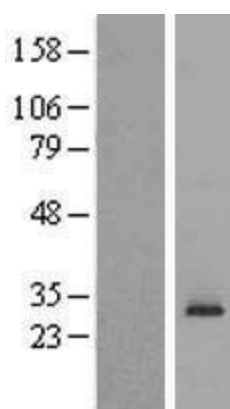
MW: 38.2 kDa

Gene Summary: This gene encodes a member of the triose-phosphate transporter protein family. This gene is regulated by oxygen tension, is induced in hypoxic trophoblast cells, and is overexpressed in ovarian cancer. Alternative splicing results in multiple transcript variants. A pseudogene of this gene has been defined on the X chromosome. [provided by RefSeq, Jul 2013]

Product images:



Circular map for RC204316



Western blot validation of overexpression lysate (Cat# [LY406671]) using anti-DDK antibody (Cat# [TA50011-100]). Left: Cell lysates from untransfected HEK293T cells; Right: Cell lysates from HEK293T cells transfected with RC204316 using transfection reagent MegaTran 2.0 (Cat# [TT210002]).