

Product datasheet for **RC204314**

EAf2 (NM_018456) Human Tagged ORF Clone

Product data:

Product Type:	Expression Plasmids
Product Name:	EAf2 (NM_018456) Human Tagged ORF Clone
Tag:	Myc-DDK
Symbol:	EAf2
Synonyms:	BM040; TRAITS; U19
Mammalian Cell Selection:	Neomycin
Vector:	pCMV6-Entry (PS100001)
E. coli Selection:	Kanamycin (25 ug/mL)
ORF Nucleotide Sequence:	>RC204314 ORF sequence Red=Cloning site Blue=ORF Green=Tags(s)

TTTTGTAATACGACTCACTATAGGGCGGCCGGAATTCGTCGACTGGATCCGGTACCGAGGAGATCTGCC
GCC**CGATCGC**C

ATGAATAGCGCAGCGGGATTCTCACACCTAGACCGTCGCGAGCGGGTTCTCAAGTTAGGGGAGAGTTTCG
AGAAGCAGCCGCGCTGCGCCTTCCACACTGTGCGCTATGACTTCAAACCTGCTTCTATTGACTTCTTC
TGAAGGATACCTTGAGGTTGGTGAAGGTGAACAGGTGACCATAACTCTGCCAAATATAGAAGTTCAACT
CCACCAGTAAGTGTTCAAAGGTTCAAAAAACCTTACTTAAAAGAATGCATTTTGATTATTAACCATG
ATACTGGAGAATGTCGGCTAGAAAACTCAGCAGCAACATCACTGTAAAAAACAAGAGTTGAAGGAAG
CAGTAAAATTCAGTATCGTAAAGAACAACAGCAACAACAATGTGGAATTCAGCCAGGACTCCCAATCTT
GTAAAAATTCTCCATCTGAAGATAAGATGTCCCAGCATCTCCAATAGATGATATCGAAAGAGAAGTGA
AGGCAGAAGCTAGTCTAATGGACCAGATGAGTAGTTGTGATAGTTCATCAGATTCAAAAAGTTTCATCATC
TTCAAGTAGTGAGGATAGTTCTAGTGACTCAGAAGATGAAGATTGCAAAATCCTCTACTTCTGATACAGGG
AATTGTGTCTCAGGACATCCTACCATGACACAGTACAGGATTCCTGATATAGATGCCAGTCATAATAGAT
TTCGAGACAACAGTGGCCTTCTGATGAATACTTTAAGAAATGATTTGCAGCTGAGTGAATCAGGAAGTGA
CAGTGATGAC

ACGCGTACGCGGCCGCTCGAGCAGAACTCATCTCAGAAGAGGATCTGGCAGCAAATGATATCCTGGATT
ACAAGGATGACGACGATAAGGTTTAA



[View online »](#)

Protein Sequence: >RC204314 protein sequence
 Red=Cloning site Green=Tags(s)

MNSAAGFSLDRRERVLKLGESFEKQPRCAFHTVRYDFKPPASIDTSSEGYLEVGEQEVTITLPNIEGST
 PPVTVFKGSKKPYLKECILIIINHDTGECRLEKLSNITVKKTRVEGSSKIQRKEQQQQMWSARTPNL
 VKHSPSEDKMSPASPIDDIERELKAEASLMDQMSSCDSSSSDKSSSSSSSEDEDEDCKSSSTSDTG
 NCVSGHPTMTQYRIPDIDASHNRFRDNSGLL MNTLRNDLQLSESGSDSD

TRTRPLEQKLISEEDLAANDILDYKDDDDKV

Chromatograms: https://cdn.origene.com/chromatograms/mk6567_c11.zip

Restriction Sites: SgfI-MluI

Cloning Scheme:

Cloning sites used for ORF Shuttling:



* The last codon before the Stop codon of the ORF

ACCN: NM_018456

ORF Size: 780 bp

OTI Disclaimer: The molecular sequence of this clone aligns with the gene accession number as a point of reference only. However, individual transcript sequences of the same gene can differ through naturally occurring variations (e.g. polymorphisms), each with its own valid existence. This clone is substantially in agreement with the reference, but a complete review of all prevailing variants is recommended prior to use. [More info](#)

OTI Annotation: This clone was engineered to express the complete ORF with an expression tag. Expression varies depending on the nature of the gene.

Components: The ORF clone is ion-exchange column purified and shipped in a 2D barcoded Matrix tube containing 10ug of transfection-ready, dried plasmid DNA (reconstitute with 100 ul of water).

Reconstitution Method:

1. Centrifuge at 5,000xg for 5min.
2. Carefully open the tube and add 100ul of sterile water to dissolve the DNA.
3. Close the tube and incubate for 10 minutes at room temperature.
4. Briefly vortex the tube and then do a quick spin (less than 5000xg) to concentrate the liquid at the bottom.
5. Store the suspended plasmid at -20°C. The DNA is stable for at least one year from date of shipping when stored at -20°C.

RefSeq: [NM_018456.6](#)

RefSeq Size: 1024 bp

RefSeq ORF: 783 bp

Locus ID: 55840

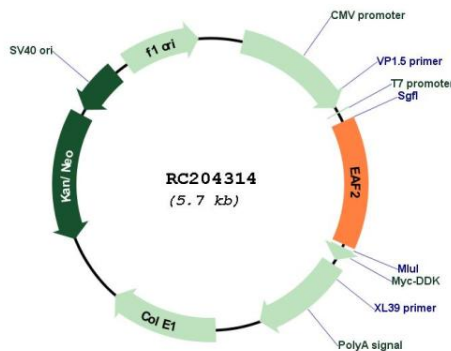
UniProt ID: [Q96CJ1](#)

Cytogenetics: 3q13.33

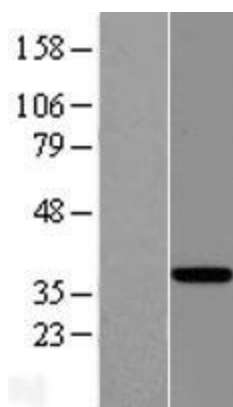
MW: 28.8 kDa

Gene Summary: Acts as a transcriptional transactivator of TCEA1 elongation activity (By similarity). Acts as a transcriptional transactivator of ELL and ELL2 elongation activities. Potent inducer of apoptosis in prostatic and non-prostatic cell lines. Inhibits prostate tumor growth in vivo. [UniProtKB/Swiss-Prot Function]

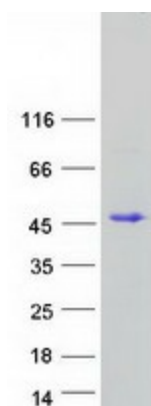
Product images:



Circular map for RC204314



Western blot validation of overexpression lysate (Cat# [LY413036]) using anti-DDK antibody (Cat# [TA50011-100]). Left: Cell lysates from untransfected HEK293T cells; Right: Cell lysates from HEK293T cells transfected with RC204314 using transfection reagent MegaTran 2.0 (Cat# [TT210002]).



Coomassie blue staining of purified EAF2 protein (Cat# [TP304314]). The protein was produced from HEK293T cells transfected with EAF2 cDNA clone (Cat# RC204314) using MegaTran 2.0 (Cat# [TT210002]).