

Product datasheet for **RC204300**

WDR21A (DCAF4) (NM_015604) Human Tagged ORF Clone

Product data:

Product Type:	Expression Plasmids
Product Name:	WDR21A (DCAF4) (NM_015604) Human Tagged ORF Clone
Tag:	Myc-DDK
Symbol:	WDR21A
Synonyms:	WDR21; WDR21A
Mammalian Cell Selection:	Neomycin
Vector:	pCMV6-Entry (PS100001)
E. coli Selection:	Kanamycin (25 ug/mL)



[View online »](#)

ORF Nucleotide Sequence:

>RC204300 representing NM_015604
 Red=Cloning site Blue=ORF Green=Tags(s)

TTTTGTAATACGACTCACTATAGGGCGGCCGGGAATTCGTCGACTGGATCCGGTACCGAGGAGATCTGCC
 GCC**GCGATCGCC**

ATGAATAAAAGTCGCTGGCAGAGTAGAAGACGACATGGGAGAAGAAGCCACCAGCAGAACCCTTGGTTCA
 GACTCCGTGATTCTGAAGACAGGTCTGACTCCCGGGCAGCACAGCCCCTCACGATTCGGCCACGGTGA
 TGACGAGTCTCCGTCAACCTCGTCTGGCACAGCTGGGACCTCCTGTGCCAGAGCTACCTGGGTTTTAC
 TTTGACCTGAAAAGAAACGCTACTTCCGCTTGCTCCCTGGACATAACAACCTGCAACCCCTGACGAAAAG
 AGAGCATCCGGCAGAAGGAGATGGAGAGCAAGAGACTGCGGTGCTCCAGGAAGAAGACAGACGGAAAAA
 GATTGCCAGGATGGATTTAATGCATCTCCATGCTACGAAAAAGCCAGCTGGGTTTTCTCAACGTCACC
 AATTACTGCCATTTAGCCCACGAGCTGCGTCTCAGCTGCATGGAGAGGAAAAAGTCCAGATTCGAAGCA
 TGGATCCCTCCGCTTGGCAAGCGACCGATTTAACCTCATACTGGCAGATACCAACAGTGACCGGCTCTT
 CACAGTGAACGATGTTACAGTTGGAGGCTCCAAGTATGGTATCATCAACCTGCAAAGTCTGAAGACCCCT
 ACGCTCAAAGTGTTCATGCACGAAAACCTACTTACCACCGGAAGGTGAATTCGGTGTGCTGGGCCCT
 CGCTGAATCACTTGGATTCCACATTCTGCTATGCCTCATGGGACTCGCAGAGACTCCAGGCTGTGCCAC
 CCTGCTCCAGCATCACTGTTCTCAATAGTACCCAGGAATAGACCGGCTGGCATGCTCTGCAGTTTC
 CGGATCCCTGGTGCCTGGTCTGTGCCTGGTCCCTGAATATCCAAGCAAATAACTGCTTCAGTACAGGCT
 TGTCTCGGCGGGTCTGTTGACCAACGTGGTGACGGGACACCGGACGCTTTGGGACCAACAGTGTGT
 CTTGGCCACGAGTTTGTCTTCAAGGCTCCTCTGCTGTTAATGGCTGCCGCTCTGGGAAATCTTTGCC
 ATTGATCTGCGTTGTGAAATCAAGGCAAGGGATGGAAGGCCACCGCCTGTTTCATGATTACAGCAGTGA
 CCTCTGTGCGGATCCTCAAGATGAGCAATACCTGATGGCTTTCAGACATGGCTGGAAAGTCAAGCTGTG
 GGACCTGAGGACCACGAAGTGCCTAAGGCAAGTACGAAAGGCCACGTAATGAGTACGCTACCTGCCCTG
 CATGTGCACGAGGAAGAAGGAATCCTGGTGGCAGTGGGCCAGGACTGCTACACGATAATCTGGAGCCTCC
 ACGATGCCCGCTACTGAGAACCATACCCTCCCGTACCCTGCCTCCAAGGCCGACATTCACAGTGTGGC
 CTTCTCGTCGCGGCTGGGGGGCTCCCGGGGCGCCGGGGCTGCTCATGGCTGTCGGGCAGGACCTTTAC
 TGTTACTCTACAGC

ACGCGTACGCGGCCGCTCGAGCAGAAACTCATCTCAGAAGAGGATCTGGCAGCAAATGATATCCTGGATT
 ACAAGGATGACGACGATAAGGTTTAA

Protein Sequence:

>RC204300 representing NM_015604
 Red=Cloning site Green=Tags(s)

MNKSRRWQSRRRHGRSHQQNPWFRLRDSERDSRAAQPAAHDSGHGDDESPSTSSGTAGTSSVPELPGFY
 FDPEKKRYFRLLPGHNNCNPLTKESIRQKEMESKRLRLLQEEDRRKKIARMGFNASSMLRKSQGLFLNVT
 NYCHLAHELRLSCMERKKVQIRSM DPSALASDRFNLILADTNSDRLFTVNDVTVGGSKYGIINLQSLKTP
 TLKVFMHENLYFTNRKVNSVCWASLNHLDSHILLCLMGLAETPGCATLLPASLFVNSHPGIDRPGMLCSF
 RIPGAWSCAWSLNIQANNCFFSTGLSRRVLLTNVVTGHRQSFGTNSDVLAAQAFMAPLLFNCRSGEIFA
 IDLRCGNQKGWKATRLFHDSAVTSVRILQDEQYLMASDMAGKIKLWDLRRTTKCVRQYEGHVNEYAYLPL
 HVHEEEGILVAVGQDCYTIIWSLHDARLLRTIPSPYPASKADIPSVAFSSRLGGSRGAPGLLMAVGQDLY
 CYSYS

TRTRPLEQKLISEEDLAANDILDYKDDDDKV

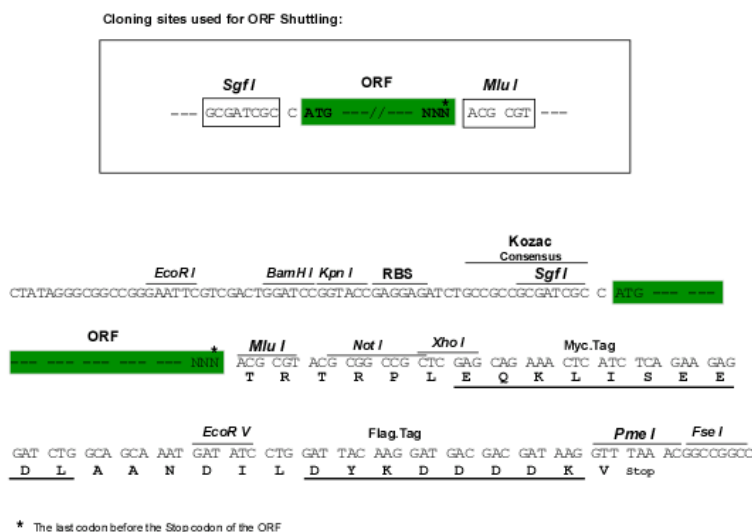
Chromatograms:

https://cdn.origene.com/chromatograms/mg4588_d07.zip

Restriction Sites:

SgfI-MluI

Cloning Scheme:



ACCN: NM_015604

ORF Size: 1485 bp

OTI Disclaimer: The molecular sequence of this clone aligns with the gene accession number as a point of reference only. However, individual transcript sequences of the same gene can differ through naturally occurring variations (e.g. polymorphisms), each with its own valid existence. This clone is substantially in agreement with the reference, but a complete review of all prevailing variants is recommended prior to use. [More info](#)

OTI Annotation: This clone was engineered to express the complete ORF with an expression tag. Expression varies depending on the nature of the gene.

Components: The ORF clone is ion-exchange column purified and shipped in a 2D barcoded Matrix tube containing 10ug of transfection-ready, dried plasmid DNA (reconstitute with 100 ul of water).

Reconstitution Method:

1. Centrifuge at 5,000xg for 5min.
2. Carefully open the tube and add 100ul of sterile water to dissolve the DNA.
3. Close the tube and incubate for 10 minutes at room temperature.
4. Briefly vortex the tube and then do a quick spin (less than 5000xg) to concentrate the liquid at the bottom.
5. Store the suspended plasmid at -20°C. The DNA is stable for at least one year from date of shipping when stored at -20°C.

RefSeq: [NM_015604.1](#)

RefSeq Size: 2563 bp

RefSeq ORF: 1488 bp

Locus ID: 26094

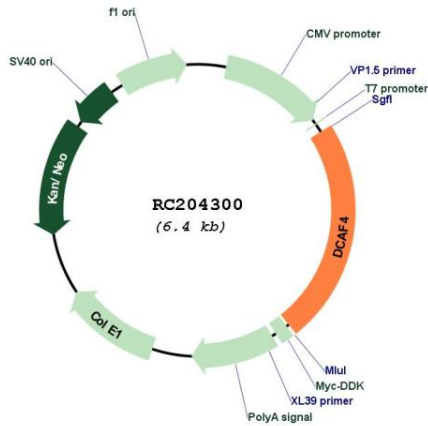
UniProt ID: [Q8WW16](#)

Cytogenetics: 14q24.2

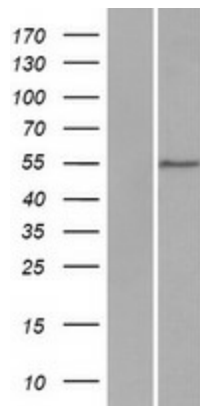
Domains: WD40
MW: 55.5 kDa

Gene Summary: This gene encodes a WD repeat-containing protein that interacts with the Cul4-Ddb1 E3 ligase macromolecular complex. Multiple alternatively spliced transcript variants have been found for this gene. [provided by RefSeq, Jul 2009]

Product images:



Circular map for RC204300



Western blot validation of overexpression lysate (Cat# [LY414451]) using anti-DDK antibody (Cat# [TA50011-100]). Left: Cell lysates from untransfected HEK293T cells; Right: Cell lysates from HEK293T cells transfected with RC204300 using transfection reagent MegaTran 2.0 (Cat# [TT210002]).