

Product datasheet for **RC204289L3V**

Cyclin E1 (CCNE1) (NM_001238) Human Tagged ORF Clone Lentiviral Particle

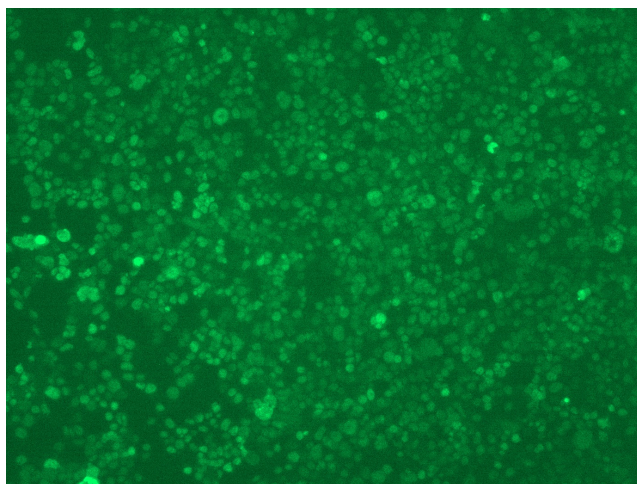
Product data:

Product Type:	Lentiviral Particles
Product Name:	Cyclin E1 (CCNE1) (NM_001238) Human Tagged ORF Clone Lentiviral Particle
Symbol:	Cyclin E1
Synonyms:	CCNE; pCCNE1
Mammalian Cell Selection:	Puromycin
Vector:	pLenti-C-Myc-DDK-P2A-Puro (PS100092)
Tag:	Myc-DDK
ACCN:	NM_001238
ORF Size:	1230 bp
ORF Nucleotide Sequence:	The ORF insert of this clone is exactly the same as(RC204289).
OTI Disclaimer:	The molecular sequence of this clone aligns with the gene accession number as a point of reference only. However, individual transcript sequences of the same gene can differ through naturally occurring variations (e.g. polymorphisms), each with its own valid existence. This clone is substantially in agreement with the reference, but a complete review of all prevailing variants is recommended prior to use. More info
OTI Annotation:	This clone was engineered to express the complete ORF with an expression tag. Expression varies depending on the nature of the gene.
RefSeq:	NM_001238.1
RefSeq Size:	2021 bp
RefSeq ORF:	1233 bp
Locus ID:	898
UniProt ID:	P24864
Cytogenetics:	19q12
Domains:	cyclin_C, CYCLIN, cyclin



[View online »](#)

Protein Families:	Druggable Genome, Stem cell - Pluripotency, Stem cell relevant signaling - DSL/Notch pathway, Transcription Factors
Protein Pathways:	Cell cycle, Oocyte meiosis, p53 signaling pathway, Pathways in cancer, Prostate cancer, Small cell lung cancer
MW:	47.1 kDa
Gene Summary:	The protein encoded by this gene belongs to the highly conserved cyclin family, whose members are characterized by a dramatic periodicity in protein abundance through the cell cycle. Cyclins function as regulators of CDK kinases. Different cyclins exhibit distinct expression and degradation patterns which contribute to the temporal coordination of each mitotic event. This cyclin forms a complex with and functions as a regulatory subunit of CDK2, whose activity is required for cell cycle G1/S transition. This protein accumulates at the G1-S phase boundary and is degraded as cells progress through S phase. Overexpression of this gene has been observed in many tumors, which results in chromosome instability, and thus may contribute to tumorigenesis. This protein was found to associate with, and be involved in, the phosphorylation of NPAT protein (nuclear protein mapped to the ATM locus), which participates in cell-cycle regulated histone gene expression and plays a critical role in promoting cell-cycle progression in the absence of pRB. [provided by RefSeq, Apr 2016]

Product images:

[RC204289L3] was used to prepare Lentiviral particles using [TR30037] packaging kit. HEK293T cells were transduced with RC204289L3V particle to overexpress human CCNE1-Myc-DDK fusion protein.