

Product datasheet for **RC204284**

PHF21B (NM_138415) Human Tagged ORF Clone

Product data:

Product Type:	Expression Plasmids
Product Name:	PHF21B (NM_138415) Human Tagged ORF Clone
Tag:	Myc-DDK
Symbol:	PHF21B
Synonyms:	BHC80L; PHF4
Mammalian Cell Selection:	Neomycin
Vector:	pCMV6-Entry (PS100001)
E. coli Selection:	Kanamycin (25 ug/mL)



[View online »](#)

ORF Nucleotide Sequence:

>RC204284 representing NM_138415
 Red=Cloning site Blue=ORF Green=Tags(s)

TTTTGTAATACGACTCACTATAGGGCGGCCGGAATTCGTCGACTGGATCCGGTACCGAGGAGATCTGCC
 GCC**CGATCGCC**

ATGGAGCTGCAGAGCCGGCCGAGGCGCTCGCCGTGGAACCTCGCGGCCACCAGAACGGCGACCTCAAGA
 AGCAGCTCCACGAAAGGCAGCCGCGGATCGCCGCGCTCAGCGACAAACAAGCTTTGGGAACGATCACTGC
 AGTGCCTGTACGGGTCCTCAGGTCAGCTCCTTGCAAGGTTGGCCGGCAAGGAGCGGCAGTGCTACCT
 CAGGTTAGGCCAAAGACTCTGATTCCAGACAGCCTCCCGTTGCCCGGGCCGGGACCGGCCACCCAAGC
 AGCCCCAACATTCCAGAAGGCCACCGTGGTCAGCGTCAAGAACCCAGCCAGCCCTCCCACCGCCAA
 CAACACTGTCAGCCATGTGCCAGCGCCCGCAGCCAGCCAGGCCCTCGCCGAGCCCGCCCTCGCC
 TCTCCGCTGAGCAGTGGGGGTGGCTACGCCATCATCTCCACCTCCCCAGCAATGCCCGCCATGG
 CCCCCAGACCGCGTGTCTGTGGTCAGTGACAGCATCAAAGTCCAGCCCTCCTCATAGTGTGACAA
 CAAGCCTCCTCCACGCCTCCTCTTCCCCTCACCCGCAACCCATCACTGTCCCCTCCACCCCTCCTCT
 TTCCCCTCACCCCTCCCTCCCATCACTGTCCCCTTACCCCTCCATGGCATCTTCCAGGTCATCATCA
 TTCAGCCTCAAGTGCAGACGCAGCCGAGAGCAGGCAGAGTCCGCGGCCCCACAGAGGAGCCATCTCA
 GGGAGCTCAGGCCACAAAAGAAGAAGGAAGACCGGCCCGCCAGCCAGGAGAACCCCGAGAAAATCGCC
 TTCATGGTAGCGCTAGGCCTGGTTACCACGGAACATTTGGAAGAAATCCAGAGCAAGCGACAGGAGCGGA
 AGAGAAGAAGCACAGCCAACCCCTGCCTACAGCGGCCTCCTGGAGACCGAGAGGAAACGGCTGGCCTCAA
 CTATCTCAACAACCCCTGTTCCCTACAGCGAGAGCCAATGAGGACCCCTGCTGGAAGAAGAGATCACC
 CACGATGAGCACTGTGCCGCTGCAAGCGAGGGGCCAACCTGCAGCCCTGCGGCACCTGCCCGGGGCT
 ACCACCTCAGCTGCCTGGAGCCGCCCTCAAGACGGCGCCCAAGGGCGTGTGGGTGTGCCCGGGCCCA
 GCAGAAGGCCTTAAAGAAGACGAGGGTGTGCCCTGGACTGGGATGCTGGCCATCGTGCACCTTTATGTC
 ACCCACAAAGACAGTCAAAGAAGAGGAGAAGCAGAAGCTGCTGCAACGAGGCAAGTGCAGAACGAGC
 ACCAGCAGCTGGAGGAGCGGGACCGCGGCTGGCGTCAGCAGTGCAGAAATGCCTGGAGTTGAAGACAAG
 CCTGCTGGCCCGCAGAGGGGCACCCAGTCATCCCTGGACCGCTGCGGGCCCTCCTGAGACTGATACAG
 GGGCAGCAGTGTCCAGGTCACCATGACGACCACTAGCCCTGCCCACTGCTGGCCGGGCCCTGGACCA
 AGCCCTCAGTGGCAGCCACACACCCACCGTCCAGCACCCCGAGGCCACAAC

ACGCGTACGCGGCCGCTCGAGCAGAAACTCATCTCAGAAGAGGATCTGGCAGCAAATGATATCTGGATT
 ACAAGGATGACGACGATAAGGTTTAA

Protein Sequence:

>RC204284 representing NM_138415
 Red=Cloning site Green=Tags(s)

MELQSRPEALAVELARHQNGDLKKQLHERQPRI AALSDKQALG TITAVPVTGPQVSSLQRLAAGQAAVLP
 QVRPKTLIPDSL PVAPGRDRPPKQPPTFQKATVVS VKNPSPALPTANNTVSHVPAPGSQPQALAEPAALA
 SPLSSAGVAYAIISTSPSNAAMAPSTAVSVSDSIKVQPLLISADNKPPRLLSSPHPATHHCPLHPSS
 LPLTPPSPSLSPSPLHGIFQVIIIQPVQQTQPESTAESRPPTTEEPSQGAQATKKKKEDRPPTQENPEKIA
 FMVALGLVTTEHLEEIQSKRQERKRSTANPAYSGLLETERKRLASNYLNNPLFLTARANEDPCWKNEIT
 HDEHCAACKRGANLQPCGTCPGAYHLSCLEPPLK TAPKGVVWCPRCQKALKKDEGVPTGMLAIVHSYV
 THKTVKEEEKQLLQRGSELQNEHQLEERDRRLASAVQKCLELKTSLLARQRTQSSLDRLRALLRLIQ
 GEQLLQVTMTTTPAPLLAGPWTKPSVAATHPTVQHPQGHN

TRTRPLEQKLISEEDLAANDILDYKDDDDKV

Chromatograms:

https://cdn.origene.com/chromatograms/mg2876_g07.zip

Restriction Sites:

Sgfl-Mlul

Cloning Scheme:


ACCN: NM_138415

ORF Size: 1593 bp

OTI Disclaimer: Due to the inherent nature of this plasmid, standard methods to replicate additional amounts of DNA in E. coli are highly likely to result in mutations and/or rearrangements. Therefore, OriGene does not guarantee the capability to replicate this plasmid DNA. Additional amounts of DNA can be purchased from OriGene with batch-specific, full-sequence verification at a reduced cost. Please contact our customer care team at custsupport@origene.com or by calling 301.340.3188 option 3 for pricing and delivery.

The molecular sequence of this clone aligns with the gene accession number as a point of reference only. However, individual transcript sequences of the same gene can differ through naturally occurring variations (e.g. polymorphisms), each with its own valid existence. This clone is substantially in agreement with the reference, but a complete review of all prevailing variants is recommended prior to use. [More info](#)

OTI Annotation: This clone was engineered to express the complete ORF with an expression tag. Expression varies depending on the nature of the gene.

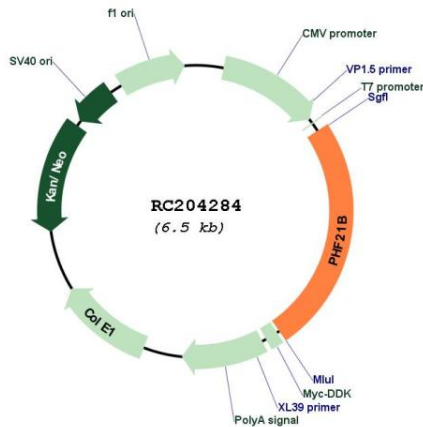
Components: The ORF clone is ion-exchange column purified and shipped in a 2D barcoded Matrix tube containing 10ug of transfection-ready, dried plasmid DNA (reconstitute with 100 ul of water).

- Reconstitution Method:**
1. Centrifuge at 5,000xg for 5min.
 2. Carefully open the tube and add 100ul of sterile water to dissolve the DNA.
 3. Close the tube and incubate for 10 minutes at room temperature.
 4. Briefly vortex the tube and then do a quick spin (less than 5000xg) to concentrate the liquid at the bottom.
 5. Store the suspended plasmid at -20°C. The DNA is stable for at least one year from date of shipping when stored at -20°C.

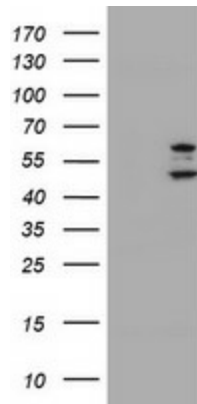
RefSeq: [NM_138415.5](#)

RefSeq Size: 3694 bp
 RefSeq ORF: 1596 bp
 Locus ID: 112885
 UniProt ID: [Q96EK2](#)
 Cytogenetics: 22q13.31
 Protein Families: Druggable Genome, Transcription Factors
 MW: 57.3 kDa

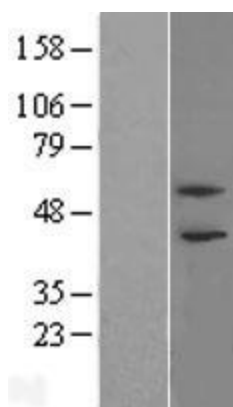
Product images:



Circular map for RC204284



HEK293T cells were transfected with the pCMV6-ENTRY control (Cat# [PS100001], Left lane) or pCMV6-ENTRY PHF21B (Cat# RC204284, Right lane) cDNA for 48 hrs and lysed. Equivalent amounts of cell lysates (5 ug per lane) were separated by SDS-PAGE and immunoblotted with anti-PHF21B (Cat# [TA503177]). Positive lysates [LY408673] (100ug) and [LC408673] (20ug) can be purchased separately from OriGene.



Western blot validation of overexpression lysate (Cat# [LY408673]) using anti-DDK antibody (Cat# [TA50011-100]). Left: Cell lysates from untransfected HEK293T cells; Right: Cell lysates from HEK293T cells transfected with RC204284 using transfection reagent MegaTran 2.0 (Cat# [TT210002]).