

Product datasheet for **RC204278**

KIAA1279 (KIF1BP) (NM_015634) Human Tagged ORF Clone

Product data:

Product Type:	Expression Plasmids
Product Name:	KIAA1279 (KIF1BP) (NM_015634) Human Tagged ORF Clone
Tag:	Myc-DDK
Symbol:	KIAA1279
Synonyms:	KBP; KIAA1279; KIF1BP; TTC20
Mammalian Cell Selection:	Neomycin
Vector:	pCMV6-Entry (PS100001)
E. coli Selection:	Kanamycin (25 ug/mL)



[View online »](#)

ORF Nucleotide Sequence:

>RC204278 ORF sequence
 Red=Cloning site Blue=ORF Green=Tags(s)

TTTTGTAATACGACTCACTATAGGGCGGCCGGAATTCGTCGACTGGATCCGGTACCGAGGAGATCTGCC
 GCC**CGCATCGCC**

ATGGCGAACGTTCCGTGGCAGAGGTCTGCGAATAATCCAGGCGGCGCTCGCTCTGTCGCGGGTGGAACT
 TGCATAAAAAATCCGGAGAAGGAACCATACAAGTCCAAATACAGCGCCCGGCGCTACTGGAAGAGGTCAA
 GGCGCTGCTCGGCCCTGCGCCTGAGGACGAGGATGAGCGGCTGAGGCCGAGGACGGCCCGGTGCCGGT
 GACCACGCCCTGGGGCTGCCGGCTGAGGTGGTGGAGCCGAGGGGCCGTCGCCAGCGAGCGGTGAGGC
 TGGCAGTCATCGAGTTCCACCTCGGGTGAACCACATCGACACGGAGGAGCTGTCGGCGGGGAGGAGCA
 CCTGGTGAATGCCTGCGGCTGTCGCGAGGTACCGGCTCTGCGCAGCTGCATCTCTCTGCATCCAG
 GCGCAGAATAACCTGGGTATCTTGTGGTCTGAAAGAGAAGAAATGAACTGCACAGGCTTACCTAGAGT
 CATCAGAAGCACTATATAATCAGTATATGAAAGAGGTTGGGAGTCTCTCTTGTGATCTACTGAGCGTTT
 TCTTCTGAAGAAGAGAACTTACTGAACAAGAGAGATCAAAAAGATTTGAAAAGTTTTACTCATAAC
 CTATATTACCTAGCTCAAGTCTACCAGCATCTGGAATGTTTGAGAAGGCTGCTCACTATTGCCATAGTA
 CACTAAAACGCCAGCTTGAGCACAAATGCCTACCATCCTATAGAGTGGGCTATCAATGCTGCTACCTGTG
 ACAGTTTTACATCAATAAGCTATGCTTTATGGAGGCCAGGCACTGTTTATCAGCTGCTAATGTCATTTTT
 GGTCAAATGGAAAGATCTCAGCCACAGAAGACACTCCTGAAGCTGAAGGAGAAGTCCAGAGCTTTATC
 ATCAAAGAAAGGGGAAATAGCAAGGTGCTGGATCAAATACTGTTGACTCTCATGCAGAATGCCAACT
 CTCCATGCAGGACAACATAGGAGAGCTTGATCTTGATAAACAGTCTGAACCTTAGAGCTTTAAGGAAAAA
 GAACCTAGATGAGGAGGAAAGCATTGGAAAAAGCTGTGCAGTTTGAACCGGTGAACCTGTGTGATGCCA
 TCTCTGCAGTAGAAGAGAAAGTGAAGTACTTGAACCTTAGATTTTGAAGAAGCCAGAGAAGCTTTCTT
 ATTGGGTCAGCACTATGTCTTTGAGGCAAAAGAGTTCTTTCAGATTGATGGTTATGTCACCTGACCATATT
 GAAGTTGTCCAAGACCACAGTGCTCTGTTTAAAGTGTGCTTGCATTTTGAAGTGCATGGAGAGACGGT
 GCAAGATGCATAAACGCAGAATAGCCATGCTAGAGCCCTAACTGTAGACCTGAATCCACAGTATTATCT
 GTTGGTCAACAGACAGATCCAGTTTGAATTGCACATGCTTACTATGATATGATGGATTTGAAGTTGCC
 ATTGCTGACAGGCTAAGGGATCTGATTCACACATTGTAAAAAATAAATAATCTTAATAAGTCAGCAC
 TGAAGTACTACCAGCTCTTCTAGACTCCCTGAGAGACCCAAATAAAGTATTCCCTGAGCATATAGGGGA
 AGATGTTCTTCCGCTGCCATGTAGCTAAGTTTCGAGTTGCCGCTCTATGGCAAATCATTACTGCA
 GATCCCAAGAAAGAGCTGAAAAATTTGGCAACATCATTGGAACATTACAAATTTATTGTTGATTACTGTG
 AAAAGCATCTGAGGCCGCCAGGAAATAGAAGTTGAGCTAGAAGTATAGTAAAGAGATGGTTAGTCTTCT
 CCCAACAAAAATGGAGAGATTCAGAACCAAGATGGCCCTGACT

ACGCGTACGCGGCCGCTCGAGCAGAACTCATCTCAGAAGAGGATCTGGCAGCAAATGATATCCTGGATT
 ACAAGGATGACGACGATAAGGTTTAA

Protein Sequence:

>RC204278 protein sequence
 Red=Cloning site Green=Tags(s)

MANVPAEVECEKFAALALSRVELHKNPEKPYKSKYSARALLEEVKALLGPAPEDEDERPEAEDGPGAG
 DHALGLPAEVVEPEGPVAQRAVRLAVIEFHLGVNHIDTEEL SAGEEHLVKCLRLRRYRLSHDCISLCIQ
 AQNNLGILWSEREEIETAQAYLESSEALYNQYMKEVGSPLDPTERFLPEEEKL TEQERSKRFEKVYTHN
 LYYLAQVYQHLEMFKAHYCHSTLKRQLEHNAHYHPIEWAINAATLSQFYINKLCFMEARHCLSAANVIF
 GQTGKISATEDTPEAEGEVPPEL YHQRKGEIARCWIKYCL TLMQNAQL SMQDNIGELDLKQSELRALRKK
 ELDEEESIRKKAVQFGTGLCDATISAVEEKVSYLRPLDFEEARELFLLGQHYVFEAKEFFQIDGYVTDHI
 EVVQDHSALFKVLAFFETDMERRCKMHKRRIAMLEPLTVDLNPQYLLVNRQIQFEIAHAYYDMDLKV
 IADRLRDPDSHIVKINNLSALKYQFLDSLRLDPNKFPEHIGEDVLRPAMLAKFVRVARLYGKIITA
 DPKKELENLATSLEHYKFIVDYCEKHPEAAQEIIEVELELSKEMVSLPTKMERFRTKMAL T

TRTRPLEQKLISEEDLAANDILDYKDDDDKV

Chromatograms: https://cdn.origene.com/chromatograms/mk6673_d05.zip

Restriction Sites: SgfI-MluI

Cloning Scheme:



ACCN: NM_015634

ORF Size: 1863 bp

OTI Disclaimer: The molecular sequence of this clone aligns with the gene accession number as a point of reference only. However, individual transcript sequences of the same gene can differ through naturally occurring variations (e.g. polymorphisms), each with its own valid existence. This clone is substantially in agreement with the reference, but a complete review of all prevailing variants is recommended prior to use. [More info](#)

OTI Annotation: This clone was engineered to express the complete ORF with an expression tag. Expression varies depending on the nature of the gene.

Components: The ORF clone is ion-exchange column purified and shipped in a 2D barcoded Matrix tube containing 10ug of transfection-ready, dried plasmid DNA (reconstitute with 100 ul of water).

Reconstitution Method:

1. Centrifuge at 5,000xg for 5min.
2. Carefully open the tube and add 100ul of sterile water to dissolve the DNA.
3. Close the tube and incubate for 10 minutes at room temperature.
4. Briefly vortex the tube and then do a quick spin (less than 5000xg) to concentrate the liquid at the bottom.
5. Store the suspended plasmid at -20°C. The DNA is stable for at least one year from date of shipping when stored at -20°C.

RefSeq: [NM_015634.4](#)

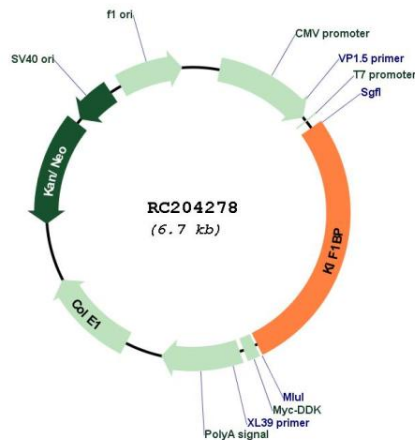
RefSeq Size: 2548 bp

RefSeq ORF: 1866 bp

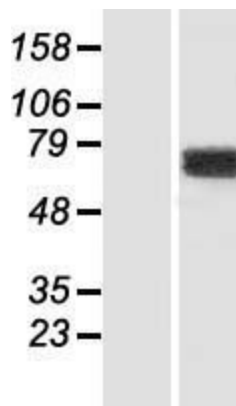
Locus ID: 26128
UniProt ID: [Q96EK5](#)
Cytogenetics: 10q22.1
MW: 71.8 kDa

Gene Summary: This gene encodes a kinesin family member 1 binding protein that is characterized by two tetratricopeptide repeats. The encoded protein localizes to the mitochondria and may be involved in regulating transport of the mitochondria. Mutations in this gene are associated with Goldberg-Shprintzen megacolon syndrome. [provided by RefSeq, Mar 2010]

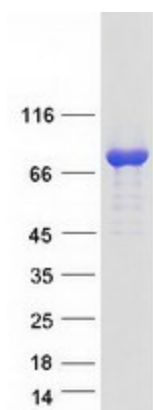
Product images:



Circular map for RC204278



Western blot validation of overexpression lysate (Cat# [LY414430]) using anti-DDK antibody (Cat# [TA50011-100]). Left: Cell lysates from untransfected HEK293T cells; Right: Cell lysates from HEK293T cells transfected with RC204278 using transfection reagent MegaTran 2.0 (Cat# [TT210002]).



Coomassie blue staining of purified KIF1BP protein (Cat# [TP304278]). The protein was produced from HEK293T cells transfected with KIF1BP cDNA clone (Cat# RC204278) using MegaTran 2.0 (Cat# [TT210002]).