

Product datasheet for **RC204277**

Oncostatin M (OSM) (NM_020530) Human Tagged ORF Clone

Product data:

Product Type:	Expression Plasmids
Product Name:	Oncostatin M (OSM) (NM_020530) Human Tagged ORF Clone
Tag:	Myc-DDK
Symbol:	Oncostatin M
Mammalian Cell Selection:	Neomycin
Vector:	pCMV6-Entry (PS100001)
E. coli Selection:	Kanamycin (25 ug/mL)
ORF Nucleotide Sequence:	>RC204277 ORF sequence Red=Cloning site Blue=ORF Green=Tags(s)

TTTTGTAATACGACTCACTATAGGGCGGCCGGAATTCGTCGACTGGATCCGGTACCGAGGAGATCTGCC
GCC**CGATCGCC**

ATGGGGTACTGCTCACACAGAGGACGCTGCTCAGTCTGGTCCTTGCACTCCTGTTTCCAAGCATGGCGA
GCATGGCGGCTATAGGCAGCTGCTCGAAAGAGTACCGCGTGTCTTGGCCAGCTCCAGAAGCAGACAGA
TCTCATGCAGGACACCAGCAGACTCCTGGACCCCTATATACGTATCCAAGGCCTGGATGTTCTAACTG
AGAGAGCACTGCAGGGAGCGCCCGGGGCTTCCCCAGTGAGGAGACCCTGAGGGGGCTGGGCAGGCGGG
GCTTCTGCAGACCCCTCAATGCCACACTGGGCTGCGTCTGCACAGACTGGCCGACTTAGAGCAGCGCT
CCCAAGGCCAGGATTTGGAGAGGTCTGGGCTGAACATCGAGGACTTGGAGAAGCTGCAGATGGCGAGG
CCGAACATCCTCGGGCTCAGGAACAACATCTACTGCATGGCCAGCTGCTGGACAACCTCAGACACGGCTG
AGCCACGAAGGCTGGCCGGGGGCTCTCAGCCGCCACCCCAACCCTGCCTCGGATGCTTTTCAGCG
CAAGCTGGAGGGCTGCAGGTTCTGCATGGCTACCATCGTTCATGCACTCAGTGGGGCGGGTCTTCAGC
AAGTGGGGGAGAGCCCGAACCGGAGCCGGAGACACAGCCCCACCAGGCCCTGAGGAAGGGGTGCGCA
GGACCAGACCTCCAGGAAAGGCAAGAGACTCATGACCAGGGGACAGCTGCCCGG

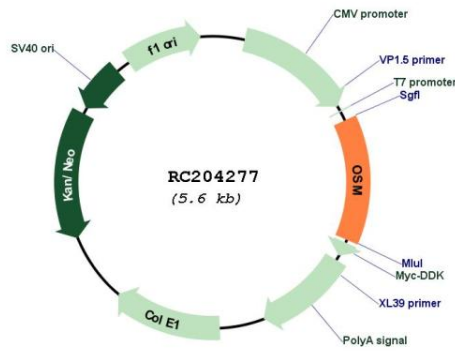
ACGCGTACGCGGCCGCTCGAGCAGAACTCATCTCAGAAGAGGATCTGGCAGCAAATGATATCTGGATT
ACAAGGATGACGACGATAAGGTTTAA



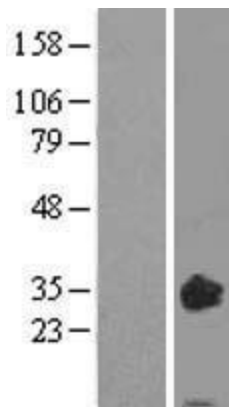
[View online »](#)

Reconstitution Method:	<ol style="list-style-type: none">1. Centrifuge at 5,000xg for 5min.2. Carefully open the tube and add 100ul of sterile water to dissolve the DNA.3. Close the tube and incubate for 10 minutes at room temperature.4. Briefly vortex the tube and then do a quick spin (less than 5000xg) to concentrate the liquid at the bottom.5. Store the suspended plasmid at -20°C. The DNA is stable for at least one year from date of shipping when stored at -20°C.
Note:	Plasmids are not sterile. For experiments where strict sterility is required, filtration with 0.22um filter is required.
RefSeq:	NM_020530.6
RefSeq Size:	1869 bp
RefSeq ORF:	759 bp
Locus ID:	5008
UniProt ID:	P13725
Cytogenetics:	22q12.2
Protein Families:	Druggable Genome, ES Cell Differentiation/IPS, Secreted Protein, Stem cell relevant signaling - DSL/Notch pathway, Stem cell relevant signaling - JAK/STAT signaling pathway
Protein Pathways:	Cytokine-cytokine receptor interaction, Jak-STAT signaling pathway
MW:	28.5 kDa
Gene Summary:	This gene encodes a member of the leukemia inhibitory factor/oncostatin-M (LIF/OSM) family of proteins. The encoded preproprotein is proteolytically processed to generate the mature protein. This protein is a secreted cytokine and growth regulator that inhibits the proliferation of a number of tumor cell lines. This protein also regulates the production of other cytokines, including interleukin 6, granulocyte-colony stimulating factor and granulocyte-macrophage colony stimulating factor in endothelial cells. This gene and the related gene, leukemia inhibitory factor, also present on chromosome 22, may have resulted from the duplication of a common ancestral gene. Alternative splicing results in multiple transcript variants, at least one of which encodes an isoform that is proteolytically processed. [provided by RefSeq, Jan 2016]

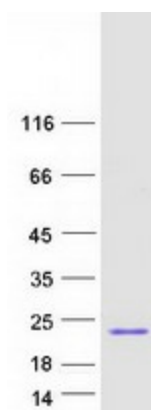
Product images:



Circular map for RC204277



Western blot validation of overexpression lysate (Cat# [LY412433]) using anti-DDK antibody (Cat# [TA50011-100]). Left: Cell lysates from untransfected HEK293T cells; Right: Cell lysates from HEK293T cells transfected with RC204277 using transfection reagent MegaTran 2.0 (Cat# [TT210002]).



Coomassie blue staining of purified OSM protein (Cat# [TP304277]). The protein was produced from HEK293T cells transfected with OSM cDNA clone (Cat# RC204277) using MegaTran 2.0 (Cat# [TT210002]).