

Product datasheet for **RC204276**

ZNF307 (ZKSCAN4) (NM_019110) Human Tagged ORF Clone

Product data:

Product Type:	Expression Plasmids
Product Name:	ZNF307 (ZKSCAN4) (NM_019110) Human Tagged ORF Clone
Tag:	Myc-DDK
Symbol:	ZNF307
Synonyms:	P1P373C6; ZNF307; ZNF427; ZSCAN36
Mammalian Cell Selection:	Neomycin
Vector:	pCMV6-Entry (PS100001)
E. coli Selection:	Kanamycin (25 ug/mL)



[View online »](#)

ORF Nucleotide Sequence:

>RC204276 ORF sequence
 Red=Cloning site Blue=ORF Green=Tags(s)

TTTTGTAATACGACTCACTATAGGGCGGCCGGAATTCGTCGACTGGATCCGGTACCGAGGAGATCTGCC
 GCC**CGCATCGCC**

ATGGCTAGAGAACCAGAAAAACGCAGCCCTGGACGCCAGTCTGCAGAAGACCAGACGGGCTCCTGA
 CCGTGAAGGTGGAGAAGGAGGAAGCCTCCGCCTTGACGGCGGAGGTGAGAGCACCCCTGCAGCCCTGCTCG
 GGGCCCCGAACGCTCCCGCCAGCGCTTCCGAGGCTTCCGCTACCCGGAGGCTGCGGGCCCCCGAGGCG
 TTGAGCCGGCTCCGAGAACTCTGCGGACAATGGCTGCAGCCTGAGATGCACAGCAAGGAGCAGATCCTGG
 AGCTGCTGGTGTGGAGCAGTTCCTGACCATCCTGCCGGGAATCTGCAGAGCTGGGTGCGGGAGCAGCA
 TCCAGAGAGCGGGGAGGAGTGGTGGTCTATTGGAGTATTTGGAGAGGCAGCTGGATGAGCCGGCGCCG
 CAGGTTCCCGTTGGTACCAGGGCAAGAACTGCTCTGTTGCAAGATGGCACTATTGACACAACTCAAG
 GGTCTCAAAGTAGCCAGTCCAGCCAATGAAGGCTCTGTTCAAGCATGAATCTCTGGGATCCAGCCCTT
 ACACGATAGAGTCTCCAGGTTCTGGGCTTGCCAGGGAGGCTGCTGCAGAGAAGATGCAATGGTAGCT
 TCCAGGCTCACTCCAGGTTCCAGGTTTGTGAAAATGGAAGATGTGGCCCTGACCCTCACTCCTGGGT
 GGACACAGCTGGATTCATCTCAGGTGAACCTCTACAGAGATGAAAAGCAGGAGAACCATAGCAGCCTGGT
 CTCCTTGGTGGTGAATACAGACTAAGAGCAGGGACTTGCCCTCAGTCAAGAAGCTTCCAGAAAAGGAG
 CATGGGAAGATATGCCACCTGAGGGAAGACATTGCCAGATTCTACACATGCAGAAGCTGGTGAACAGG
 AGGGCAGGTTACAAAGAAAGCAGAAAAATGCCATAGGGAGTAGGGCAGATTATTGCCATGAATGTGGAAA
 GAGTTTTGCTCAAAGTTCAGGCTGACTAAACACAGGAGAATCCACACTGGTGAAGAACCCATGAATGT
 GAAGCATGTGAAAGACCTTCAATGGGAGCTCTGCCCTGTTCATTCATCAGAGAGTCCACACTGGTGAGA
 AGCCATATGAGTGTGAAGAATGTGTAAGTCTCAGTCACAGCTCAAACCTTATCAAACACCAGAGAAC
 CCACACTGGGGAGAAGCCCTATGAGTGTGATGACTGTGGGAAGACCTTCAGCCAGAGCTGCAGCCTCCTT
 GAACATCACAAAATTCATACTGGGGAGAAGCCATACCAGTGAATATGTGTGGCAAAGCCTTTAGCGGGA
 ATTCACATCTCCTGAGACATCAGAGGATTCATGGTGATAAAAAATGTTCAGAATCCTGAGCACGGGGAGTC
 CTGGGAAAGTCAGGGTAGGACGGAAGCCAGTGGGAAAAACTGAGGCTCCCGTGTCTTATAAATGTAAT
 GAGTGTGAGAGAAGTTTACACGGAATAGAAGTCTTATTGAACATCAGAAAAATCCACACTGGTGAGAAAC
 CCTATCAGTGTGACACATGTGAAAAGGTTTCACTCGAAGTTCATACCTGTTCAACATCAGAGAAGCCA
 TGTAGGGAAAAAACTCTTTCACAG

ACGCGTACGCGGCCGCTCGAGCAGAAACTCATCTCAGAAGAGGATCTGGCAGCAAATGATATCCTGGATT
 ACAAGGATGACGACGATAAGGTTTAA

Protein Sequence:

>RC204276 protein sequence
 Red=Cloning site Green=Tags(s)

MAREPRKNAALDAQSAEDQTGLLTVKVEKEEASALTAEVRAPCSPARGPERSRQFRGRFRYPEAAGPREA
 L.SRLRELQWLPPEMHSKEQILELLVLEQFLTILPGNLQSWVREQHPESGEEVVVLLLEYLERQLDEPAP
 QVPVGDQQLLCKMALLTQTQGSQSSQCQPMKALFKHESLGSQPLHDRVLPVPLAQQGCCREDAMVA
 SRLTPGSQGLLMEDVALTLTPGWTQLDSSQVNLVYRDEKQENHSSLVSLGGEIQTKSRDLPPVKLPEKE
 HGKICHLREDIAQIPTHAEAGEQEGRLQRKQKNAIGSRRHYCHECGKSFQAQSSGLTKHRRHTGKPYEC
 EDCGKTFIGSSALVIHQRVHTGKPYECEECGKVFSSNLIKHQRHTHTGKPYECDDCGKTFSSQCSLL
 EHHKIHTGKPYQCNMCGKAFRRNSHLLRHQRIHGDKNVQNPHEGESWESQGRTEAPVSYKCN
 ECERSFTRNRSLIEHQIHTGKPYQCDTCGKGFTRTSYLVQHQRSHVGGKTLTSLQ

TRTRPLEQKLISEEDLAANDILDYKDDDDKV

Chromatograms:

https://cdn.origene.com/chromatograms/mk6199_f05.zip

Restriction Sites:

Sgfl-MluI

Cloning Scheme:


ACCN: NM_019110

ORF Size: 1635 bp

OTI Disclaimer: The molecular sequence of this clone aligns with the gene accession number as a point of reference only. However, individual transcript sequences of the same gene can differ through naturally occurring variations (e.g. polymorphisms), each with its own valid existence. This clone is substantially in agreement with the reference, but a complete review of all prevailing variants is recommended prior to use. [More info](#)

OTI Annotation: This clone was engineered to express the complete ORF with an expression tag. Expression varies depending on the nature of the gene.

Components: The ORF clone is ion-exchange column purified and shipped in a 2D barcoded Matrix tube containing 10ug of transfection-ready, dried plasmid DNA (reconstitute with 100 ul of water).

- Reconstitution Method:**
1. Centrifuge at 5,000xg for 5min.
 2. Carefully open the tube and add 100ul of sterile water to dissolve the DNA.
 3. Close the tube and incubate for 10 minutes at room temperature.
 4. Briefly vortex the tube and then do a quick spin (less than 5000xg) to concentrate the liquid at the bottom.
 5. Store the suspended plasmid at -20°C. The DNA is stable for at least one year from date of shipping when stored at -20°C.

RefSeq: [NM_019110.5](#)

RefSeq Size: 2307 bp

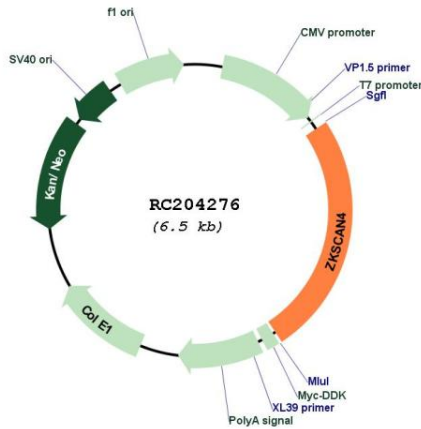
RefSeq ORF: 1638 bp

Locus ID: 387032

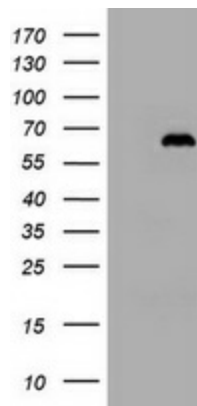
UniProt ID: [Q969J2](#)

Cytogenetics: 6p22.1
Domains: KRAB, LER, zf-C2H2
Protein Families: Transcription Factors
MW: 61.6 kDa
Gene Summary: May be involved in the transcriptional activation of MDM2 and EP300 genes.
 [UniProtKB/Swiss-Prot Function]

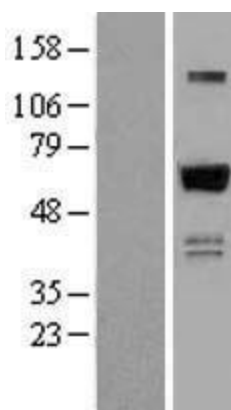
Product images:



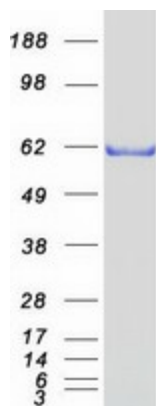
Circular map for RC204276



HEK293T cells were transfected with the pCMV6-ENTRY control (Cat# [PS100001], Left lane) or pCMV6-ENTRY ZKSCAN4 (Cat# RC204276, Right lane) cDNA for 48 hrs and lysed. Equivalent amounts of cell lysates (5 ug per lane) were separated by SDS-PAGE and immunoblotted with anti-ZKSCAN4(Cat# [TA800605]). Positive lysates [LY402737] (100ug) and [LC402737] (20ug) can be purchased separately from OriGene.



Western blot validation of overexpression lysate (Cat# [LY402737]) using anti-DDK antibody (Cat# [TA50011-100]). Left: Cell lysates from untransfected HEK293T cells; Right: Cell lysates from HEK293T cells transfected with RC204276 using transfection reagent MegaTran 2.0 (Cat# [TT210002]).



Coomassie blue staining of purified ZKSCAN4 protein (Cat# [TP304276]). The protein was produced from HEK293T cells transfected with ZKSCAN4 cDNA clone (Cat# RC204276) using MegaTran 2.0 (Cat# [TT210002]).