

## Product datasheet for **RC204270**

### CLPTM1 (NM\_001294) Human Tagged ORF Clone

#### Product data:

Product Type:	Expression Plasmids
Product Name:	CLPTM1 (NM_001294) Human Tagged ORF Clone
Tag:	Myc-DDK
Symbol:	CLPTM1
Mammalian Cell Selection:	Neomycin
Vector:	pCMV6-Entry (PS100001)
E. coli Selection:	Kanamycin (25 ug/mL)



[View online »](#)

**ORF Nucleotide Sequence:**

>RC204270 ORF sequence  
 Red=Cloning site Blue=ORF Green=Tags(s)

TTTTGTAATACGACTCACTATAGGGCGGCCGGGAATTCGTCGACTGGATCCGGTACCGAGGAGATCTGCC  
 GCC**CGGATCGCC**

ATGGCGGGCGCAGGAGCGGACGGGGCCCGCAGCGCCGTGGTGGCGGGCGGGGAGGCAGCTCCGGTC  
 AGGTGACCAGCAATGGCAGCATCGGGAGGGACCCGCCAGCGGAGACCCAGCCTCAGAACCACCGGCCCA  
 GCCGGCACCCAATGCCTGGCAGGTCATCAAAGGTGTGCTGTTTAGGATCTTCATCATCTGGGCCATCAGC  
 AGTTGGTTCGGCCGAGGGCCGGCCCTCAGGACCAGGCGGGCCCGGAGGAGCCACCGCTCGCCAGCC  
 GCAACCTGTTCCCAAAGACTTTAATGAACCTGCATGTGTACATCTCAGAGCAGGAGCACTTTACAGA  
 CTTCAACGCCACGTGGCACTCTTCTGGGAACAGCAGCATCTTGTGTATGGCGACTGGACTAGCGGGCAG  
 AACTCAGACGGTGTACGAGCACTTTGCTGAGCTCGATATCCACAGAGCGTCCAGCAGAACGGCTCCA  
 TCTACATCCACGTTTACTTCACCAAGAGTGGCTCCACCCAGACCCCGCAGAAGGCCCTGTACCGCCG  
 GCTTGCCACAGTCCACATGTCCCGGATGATCAACAAATACAAGCGCAGACGATTTAGAAAACCAAGAAC  
 CTGCTGACAGGAGAGACAGAAGCGGACCCAGAAATGATCAAGAGGGCTGAGGACTATGGGCTGTGGAGG  
 TGATCTCCATTGGCACCCCAACATCACCATCAACATCGTGGACGACCACACGCCGTGGGTGAAGGGCAG  
 TGTGCCCCCTCCCTGGATCAATATGTGAAGTTCGACGCCGTGAGCGGTGACTACTATCCCATCATCTAC  
 TTCAATGACTACTGGAACCTGCAGAAGGACTACTACCCATCAACGAGAGCCTGGCCAGCCTGCCGCTCC  
 GCGTCTCCTTCTGCCGCTCTCGCTTTGGCGTGGCAGCTCTATGCTGCCAGAGCACCAGTCCGCCCTG  
 GAATTCCTGGGTGATGAGTTGTACGAGCAGTCAGATGAGGAGCAGGACTCGGTGAAGGTGGCCCTGCTG  
 GAGACCAACCCCTACCTGCTGGCGCTCACCATCATCGTGTCTATCGTTTACAGTGTCTTCGAGTTCTGG  
 CCTTCAAGAATGATATCCAGTTCTGGAACAGCCGGCAGTCCCTGGAGGGCCTGTCCGTGGCTCCGTCTT  
 CTCGGCGTTTTCCAGTCATTCGTGGTCCCTCTACATCCTGGACAACGAGACCAACTTCGTGGTCCAG  
 GTCAGCGTCTTCATTGGGGTCTCATCGACCTCTGGAAGATCACCAGGTCATGGACGTCCGGCTGGACC  
 GAGAGCACAGGGTGGCAGGAATCTTCCCCGCCTATCCTTCAAGGACAAGTCCACGTATATCGAGTCCCTC  
 GACCAAGTGATGATGATATGGCATTCCGGTACCTGTCTGGATCCTCTTCCCGCTCTGGGCTGCTAT  
 GCCGTCTACAGTCTTCTGTACCTGGAGCACAAGGGCTGGTACTCCTGGGTGCTCAGCATGCTCTACGGCT  
 TCCTGCTGACCTTCGGCTTCATCACCATGACGCCCCAGCTCTTCATCAACTACAAGCTCAAGTCTGTGGC  
 CCACCTTCCCTGGCGCATGCTCACCTACAAGGCCCTCAACACATTCATCGACGACCTGTTCCGCTTTGTC  
 ATCAAGATGCCCGTTATGTACCGGATCGGCTGCCTGCGGGACGATGTGGTTTTTTCATCTACCTCTACC  
 AACGGTGGATCTACCGCGTCGACCCACCCGAGTCAACGAGTTTGGCATGAGTGGAGAAGACCCACAGC  
 TGCCGCCCCCGTGGCCGAGGTTCCACAGCAGCAGGGGCCCTCACGCCACACCTGCACCCACCAGACC  
 ACCGCCACCAGGGAGGAGGCTCCACGTCCCTGCCACCAAGCCACCCAGGGGGCCAGCTCTGCCAGCG  
 AGCCCCAGGAAGCCCCTCCAAGCCAGCAGAGGACAAGAAAAAGGAT

AG**CGGACCG**ACGCGTACGCGGCCGCTCGAGCAGAACTCATCTCAGAAGAGGATCTGGCAGCAAATGATATCC  
 TGGATTACAAGGATGACGACGATAAGGTTTAA

**Protein Sequence:** >RC204270 protein sequence  
Red=Cloning site Green=Tags(s)

```

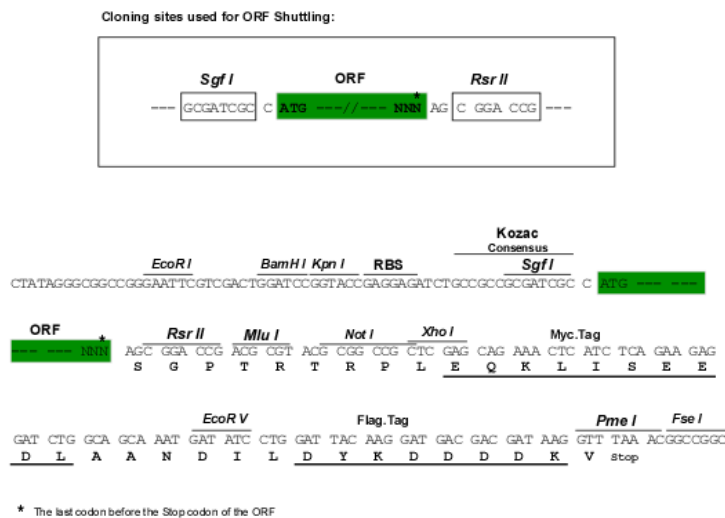
MAAAQEADGARS AVVAAGGGSSGQVTSNGS IGRDPPAETQPQNPPAQPAPNAWQVIKGVLFRI FIIWAIS
SWFRRGPAPQDQAGPGGAPRVASRNLFPKDTLMNLHVYI SEHEHFTDFNATSALFWEQHDLVYGDWTSGE
NSDGCYEHFAELDIPQSVQNGSIYIHVYFTKSGFHPDPRQKAL YRRLATVHMSRMINKYKRRRFQKTKN
LLTGETEADPEMIKRAEDYGPVEVISHWHPNITINIVDDHTPWVKGSVPPPLDQYVKF DAVSGDYYP I IY
FN DYWNLQKDYYPINESLASLPLRVSFCLSLWRWQLYAAQSTKSPWNFLGDEL YEQSD EEQDSVKVALL
ETNPYLLALTIIVSVHVSVEFLAFKNDIQFWSRQSL EGLSVRSVFFGVFQSFVLLYILDNETNFVVQ
VSVFIGVLIDLWKITKVM DVRLDREHRVAGIFPRLSFKDKSTYIESSTKVYDDMAFRYLSWILFPLLGCY
AVYLLYLEHKGWYSWLSMLYGFLLTFGFITMTPQLF INYKLSVAHL PWRMLTYKALNTFIDDLFAFV
IKMPVMYRIGCLRDDVVF IYLQRWIYRVDPTRVNEFGMSGEDPTAAAPVAEVP TAAGALTPTPAPTTT
TATREEASTSLPTKPTQGASSASEPQEAPPKPAEDKKK D
    
```

SGPTRTRPLEQKLI SEEDLAANDILDYKDDDDKV

**Chromatograms:** [https://cdn.origene.com/chromatograms/mk6184\\_e12.zip](https://cdn.origene.com/chromatograms/mk6184_e12.zip)

**Restriction Sites:** Sgfl-RsrII

**Cloning Scheme:**



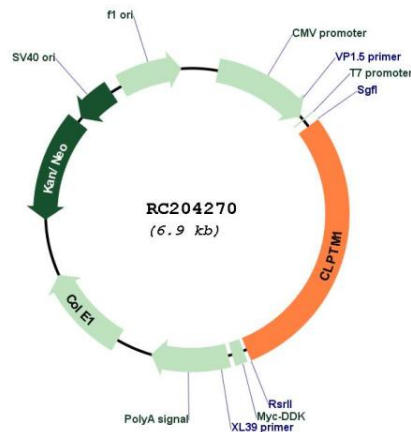
**ACCN:** NM\_001294

**ORF Size:** 2007 bp

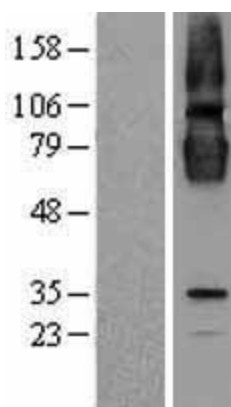
**OTI Disclaimer:** The molecular sequence of this clone aligns with the gene accession number as a point of reference only. However, individual transcript sequences of the same gene can differ through naturally occurring variations (e.g. polymorphisms), each with its own valid existence. This clone is substantially in agreement with the reference, but a complete review of all prevailing variants is recommended prior to use. [More info](#)

**OTI Annotation:** This clone was engineered to express the complete ORF with an expression tag. Expression varies depending on the nature of the gene.

<b>Components:</b>	The ORF clone is ion-exchange column purified and shipped in a 2D barcoded Matrix tube containing 10ug of transfection-ready, dried plasmid DNA (reconstitute with 100 ul of water).
<b>Reconstitution Method:</b>	<ol style="list-style-type: none"> <li>1. Centrifuge at 5,000xg for 5min.</li> <li>2. Carefully open the tube and add 100ul of sterile water to dissolve the DNA.</li> <li>3. Close the tube and incubate for 10 minutes at room temperature.</li> <li>4. Briefly vortex the tube and then do a quick spin (less than 5000xg) to concentrate the liquid at the bottom.</li> <li>5. Store the suspended plasmid at -20°C. The DNA is stable for at least one year from date of shipping when stored at -20°C.</li> </ol>
<b>RefSeq:</b>	<u>NM_001294.4</u>
<b>RefSeq Size:</b>	2649 bp
<b>RefSeq ORF:</b>	2010 bp
<b>Locus ID:</b>	1209
<b>UniProt ID:</b>	<u>O96005</u>
<b>Cytogenetics:</b>	19q13.32
<b>Protein Families:</b>	Transmembrane
<b>MW:</b>	76.1 kDa
<b>Gene Summary:</b>	May play a role in T-cell development.[UniProtKB/Swiss-Prot Function]

**Product images:**


Circular map for RC204270



Western blot validation of overexpression lysate (Cat# [LY400516]) using anti-DDK antibody (Cat# [TA50011-100]). Left: Cell lysates from untransfected HEK293T cells; Right: Cell lysates from HEK293T cells transfected with RC204270 using transfection reagent MegaTran 2.0 (Cat# [TT210002]).