

Product datasheet for **RC204264**

MFSD2A (NM_032793) Human Tagged ORF Clone

Product data:

Product Type:	Expression Plasmids
Product Name:	MFSD2A (NM_032793) Human Tagged ORF Clone
Tag:	Myc-DDK
Symbol:	MFSD2A
Synonyms:	MCPH15; MFSD2; NEDMISBA; NLS1; SLC59A1
Vector:	pCMV6-Entry (PS100001)
E. coli Selection:	Kanamycin (25 ug/mL)
Cell Selection:	Neomycin



[View online »](#)

ORF Nucleotide Sequence:

>RC204264 ORF sequence
 Red=Cloning site Blue=ORF Green=Tags(s)

TTTTGTAATACGACTCACTATAGGGCGGCCGGGAATTCGTCGACTGGATCCGGTACCGAGGAGATCTGCC
 GCC**CGGATCGCC**

ATGGCCAAAGGAGAAGGCGCCGAGAGCGGCTCCGCGGCGGGCTGCTACCCACCAGCATCTCCAAGCA
 CTGAACGCCCGGCCAGGTGAAGAAAGAACCGAAAAAGAAGAAACAACAGTTGTCTGTTTGAACAAGCT
 TTGCTATGCACCTTGGGGAGCCCCCTACCAGGTGACGGGCTGTGCCCTGGGTTTCTCTTCAGATCTAC
 CTATTGGATGTGGCTCAGGTGGGCCCTTCTCTGCCTCCATCATCCTGTTTGTGGCCGAGCCTGGGATG
 CCATCACAGACCCCTGGTGGGCCTCTGCATCAGCAAAATCCCTGGACCTGCCTGGGTCGCCTTATGCC
 CTGGATCATCTTCCACGCCCTGGCCGTCATTGCCTACTTCTCATCTGGTTCGTGCCGACTTCCCA
 CACGGCCAGACCTATTGGTACCTGCTTTTCTATTGCCTTTTGAACAATGGTACGTGTTTCCATGTTT
 CCTACTCGGCTCTCACCATGTTTCATCAGCACCGAGCAGACTGAGCGGGATTCTGCCACCGCTATCGGAT
 GACTGTGGAAGTCTGGGCACAGTCTGGGCACGGCGATCCAGGGACAAATCGTGGCCAAGCAGACACG
 CCTTGTTCAGGACCTCAATAGCTCTACAGTAGCTTCAAAAGTGCCAACCATACACATGGCACCACCT
 CACACAGGGAAACGCAAAAGGCATACCTGCTGGCAGCGGGGTCATTGTCTGTATCTATAATCTGTGC
 TGTATCTGATCCTGGGCGTGGGGAGCAGAGAGAACCCTATGAAGCCAGCAGTCTGAGCCAATCGCC
 TACTTCCGGGGCTACGGCTGGTTCATGAGCCACGGCCATACATCAAACTTATTACTGGCTTCTCTTCA
 CCTCTTGGCTTTCATGCTGGTGGAGGGGAACCTTGTCTGTTTTGCACCTACACCTTGGGCTTCCGCAA
 TGAATTCAGAATCTACTCCTGGCCATCATGCTCTCGGCCACTTAACCATTCATCTGGCAGTGGTTC
 TTGACCCGGTTTGGCAAGAAGACAGCTGTATATGTTGGGATCTCATCAGCAGTGCATTTCTCATCTGG
 TGGCCCTCAGGAGATAACCTCATCATTACATATGCGGTAGCTGTGGCAGCTGGCATCAGTGTGGCAGC
 TGCCCTTCTACTACCCTGGTCCATGCTGCCTGATGTCATTGACGACTTCCATCTGAAGCAGCCCCACTT
 CATGGAACCGAGCCCATCTTCTCTCTCTATGTCTTCTTACCAAGTTTGCCTCTGGAGTGCTACTGG
 GCATTTCTACCCTCAGTCTGGACTTTGCAGGGTACCAGACCCGTGGCTGCTCGCAGCCGGAACGTGTC
 GTTTACTACTGAACATGCTCGTGACCATGGCTCCCATAGTTCTCATCTGCTGGGCTGCTGCTCTTCAA
 ATGTACCCATTGATGAGGAGAGCGCGGCAGAAATAAGAAGGCCCTGCAGGCACTGAGGGACGAGGCCA
 GCAGCTCTGGCTGCTCAGAAACAGACTCCACAGAGCTGGTAGCATCTCT

ACGCGTACGCGGCCGCTCGAGCAGAAACTCATCTCAGAAGAGGATCTGGCAGCAAATGATATCTGGATT
 ACAAGGATGACGACGATAAGGTTTAA

Protein Sequence:

>RC204264 protein sequence
 Red=Cloning site Green=Tags(s)

MAKGEGAESGSAAGLLPTSILQSTERPAQVKKEPKKKKQQLSVCNKL CYALGGAPYQVTGCALGFFLQIY
 LLDVAQVGPFSASIIILFVGRAWDAITDPLVGLCISKSPWTCGLRMLPWIIFSTPLAVIAYFLIWFVPDFP
 HGQTYWYLLFYCLFETMVTCFHVPYSALTMFISTEQTERDSATAYRMTVEVLGTVLGTAIQGQIVGQADT
 PCFQDLNSSTVASQSANHTHGTTSHRETQKAYLLAAGVIVCIYIICAVILILGVREQREPVEAQQSEPIA
 YFRGLRLVMShGPYIKLITGFLFTSLAFMLVEGNFVLFCTYTLGFRNEFQNLILAIMLSATLTIPWQWF
 LTRFGKKTAVYVGISSAVPFLILVALMESNLIITYAVAVAAGISVAAAFLLPWSMLPDVIDDHFKQPHF
 HGTEPIFFSFYVFFTKFASGVSLGISTLSLDFAGYQTRGCSQPERVKFTLNMLVTPAPIVLILLGLLLFK
 MYPIDEERRRQNKALQALRDEASSSGCSETDSTELASIL

TRTRPLEQKLISEEDLAANDILDYKDDDDKV

Chromatograms:

https://cdn.origene.com/chromatograms/mk6567_g07.zip

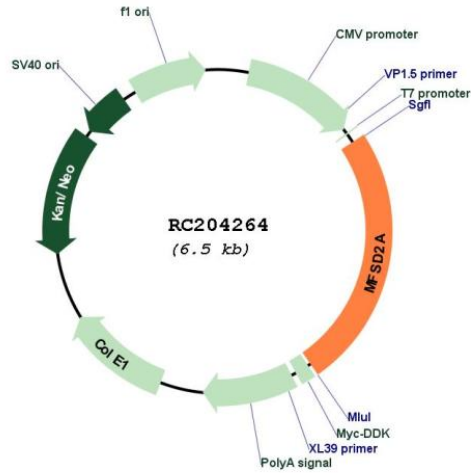
Restriction Sites:

SgfI-MluI

Cloning Scheme:



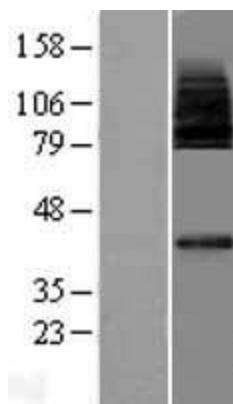
Plasmid Map:



ACCN:

NM_032793

ORF Size:	1590 bp
OTI Disclaimer:	<p>Due to the inherent nature of this plasmid, standard methods to replicate additional amounts of DNA in E. coli are highly likely to result in mutations and/or rearrangements. Therefore, OriGene does not guarantee the capability to replicate this plasmid DNA. Additional amounts of DNA can be purchased from OriGene with batch-specific, full-sequence verification at a reduced cost. Please contact our customer care team at custsupport@origene.com or by calling 301.340.3188 option 3 for pricing and delivery.</p> <p>The molecular sequence of this clone aligns with the gene accession number as a point of reference only. However, individual transcript sequences of the same gene can differ through naturally occurring variations (e.g. polymorphisms), each with its own valid existence. This clone is substantially in agreement with the reference, but a complete review of all prevailing variants is recommended prior to use. More info</p>
OTI Annotation:	This clone was engineered to express the complete ORF with an expression tag. Expression varies depending on the nature of the gene.
Components:	The ORF clone is ion-exchange column purified and shipped in a 2D barcoded Matrix tube containing 10ug of transfection-ready, dried plasmid DNA (reconstitute with 100 ul of water).
Reconstitution Method:	<ol style="list-style-type: none"> 1. Centrifuge at 5,000xg for 5min. 2. Carefully open the tube and add 100ul of sterile water to dissolve the DNA. 3. Close the tube and incubate for 10 minutes at room temperature. 4. Briefly vortex the tube and then do a quick spin (less than 5000xg) to concentrate the liquid at the bottom. 5. Store the suspended plasmid at -20°C. The DNA is stable for at least one year from date of shipping when stored at -20°C.
RefSeq:	NM_032793.5
RefSeq Size:	2192 bp
RefSeq ORF:	1593 bp
Locus ID:	84879
UniProt ID:	Q8NA29
Cytogenetics:	1p34.2
Protein Families:	Transmembrane
MW:	58.6 kDa
Gene Summary:	The protein encoded by this gene is a transmembrane protein and sodium-dependent lysophosphatidylcholine transporter. The encoded protein is involved in the establishment of the blood-brain barrier and is required for brain growth and function. Defects in this gene are a cause of a progressive microcephaly syndrome. [provided by RefSeq, Mar 2017]

Product images:

Western blot validation of overexpression lysate (Cat# [LY409827]) using anti-DDK antibody (Cat# [TA50011-100]). Left: Cell lysates from untransfected HEK293T cells; Right: Cell lysates from HEK293T cells transfected with RC204264 using transfection reagent MegaTran 2.0 (Cat# [TT210002]).