

## Product datasheet for **RC204262**

### PITPNB (NM\_012399) Human Tagged ORF Clone

#### Product data:

Product Type:	Expression Plasmids
Product Name:	PITPNB (NM_012399) Human Tagged ORF Clone
Tag:	Myc-DDK
Symbol:	PITPNB
Synonyms:	PI-TP-beta; PtdInsTP; VIB1B
Mammalian Cell Selection:	Neomycin
Vector:	pCMV6-Entry (PS100001)
E. coli Selection:	Kanamycin (25 ug/mL)
ORF Nucleotide Sequence:	>RC204262 ORF sequence Red=Cloning site Blue=ORF Green=Tags(s)

TTTGTGAATACGACTCACTATAGGGCGGCCGGAATTCGTCGACTGGATCCGGTACCGAGGAGATCTGCC  
 GCC**CGATCGC**

ATGGTGCTGATCAAGGAATTCGGTGTGGTTTTGCCATGTTCTGTTTCAGGAGTATCAGGTTGGGCAGCTTT  
 ACTCTGTTGCAGAAGCTAGTAAGAATGAGACTGGTGGTGGAGAAGGAATTGAAGTCTTAAGAATGAACC  
 TTATGAGAAGGATGGAGAAAAGGGACAGTATACGCACAAAATTTATCACCTAAAGAGCAAAGTGCCTGCA  
 TTCGTGAGGATGATTGCTCCCGAGGGCTCCTTGGTGTTCATGAGAAAGCCTGGAATGCGTACCCCTACT  
 GTAGACAATTGTAACGAATGAATATATGAAAGATGATTTCTTCATTAATAATCGAAACATGGCACAAACC  
 AGACTTGGGAACATTAGAAAATGTACATGGTTTAGATCCAAACACATGGAAAACCTGTTGAAATTGTCCAT  
 ATAGATATTGCAGATAGAAGTCAAGTTGAACCAGCAGACTACAAAGCTGATGAAGACCCAGCATTATTCC  
 AGTCAGTCAAGACCAAGAGAGGCCCTTTGGGACCCAACCTGGAAGAAGGAGCTGGCAAACAGCCCTGACTG  
 TCCCCAGATGTGTGCCTATAAGCTGGTGACCATCAAATTCAGTGGTGGGGACTGCAAAGCAAAGTAGAA  
 AACTTCATTCAAAGCAAGAAAAACGGATTTTACAACTTCCATCGCCAGCTTTTTTGTGGATTGACA  
 AGTGGATCGATCTCACGATGGAAGACATTAGGAGAATGGAAGACGAGACTCAGAAAGAACTAGAAACAAT  
 GCGTAAGAGGGGTTCCGTTTCGAGGCACGTCGGCTGCTGATGTC

**ACGCGT**ACGCGGCCGCTCGAGCAGAAACTCATCTCAGAAGAGGATCTGGCAGCAAATGATATCCTGGATT  
 ACAAGGATGACGACGATAAGGTTTAA


[View online »](#)

**Protein Sequence:** >RC204262 protein sequence  
 Red=Cloning site Green=Tags(s)

MVLIKEFRVVLPCSVQEYVQGQLYSVAEASKNETGGGEGIEVLKNEPYEKDGEKGQYTHKIYHLKSKVPA  
 FVRMIAPEGSLVFHEKAWNAYPYCRTIVTNEYMKDDFFIKIETWHKPDGLTLENVHGLDPNTWKTVEIVH  
 IDIADRSQVEPADYKADEDPALFQSVKTKRGPLGPNWKKELANSPDCPQMCAKLVITIKFWWGLQSKVE  
 NFIQKQEKRIFTNFHRQLFCWIDKWIDLTMEDIRMEDETQKELETMRKGSVRGTSAADV

TRTRPLEQKLISEEDLAANDILDYKDDDDKV

**Chromatograms:** [https://cdn.origene.com/chromatograms/mk6060\\_c08.zip](https://cdn.origene.com/chromatograms/mk6060_c08.zip)

**Restriction Sites:** SgfI-MluI

**Cloning Scheme:**



**ACCN:** NM\_012399

**ORF Size:** 813 bp

**OTI Disclaimer:** The molecular sequence of this clone aligns with the gene accession number as a point of reference only. However, individual transcript sequences of the same gene can differ through naturally occurring variations (e.g. polymorphisms), each with its own valid existence. This clone is substantially in agreement with the reference, but a complete review of all prevailing variants is recommended prior to use. [More info](#)

**OTI Annotation:** This clone was engineered to express the complete ORF with an expression tag. Expression varies depending on the nature of the gene.

**Components:** The ORF clone is ion-exchange column purified and shipped in a 2D barcoded Matrix tube containing 10ug of transfection-ready, dried plasmid DNA (reconstitute with 100 ul of water).

**Reconstitution Method:**

1. Centrifuge at 5,000xg for 5min.
2. Carefully open the tube and add 100ul of sterile water to dissolve the DNA.
3. Close the tube and incubate for 10 minutes at room temperature.
4. Briefly vortex the tube and then do a quick spin (less than 5000xg) to concentrate the liquid at the bottom.
5. Store the suspended plasmid at -20°C. The DNA is stable for at least one year from date of shipping when stored at -20°C.

**Note:** Plasmids are not sterile. For experiments where strict sterility is required, filtration with 0.22um filter is required.

**RefSeq:** [NM\\_012399.5](#)

**RefSeq Size:** 2981 bp

**RefSeq ORF:** 816 bp

**Locus ID:** 23760

**UniProt ID:** [P48739](#)

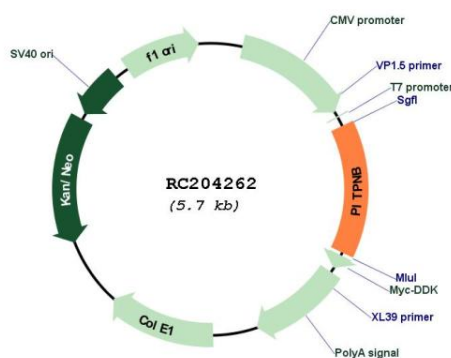
**Cytogenetics:** 22q12.1

**Domains:** IP\_trans

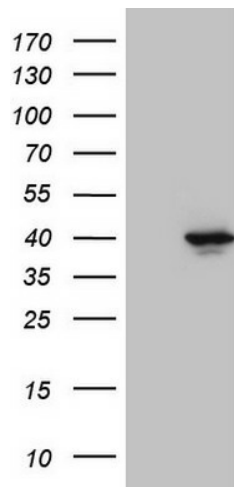
**MW:** 31.5 kDa

**Gene Summary:** This gene encodes a cytoplasmic protein that catalyzes the transfer of phosphatidylinositol and phosphatidylcholine between membranes. This transfer activity is required for COPI complex-mediated retrograde transport from the Golgi apparatus to the endoplasmic reticulum. Alternative splicing of this gene results in multiple transcript variants. [provided by RefSeq, Sep 2013]

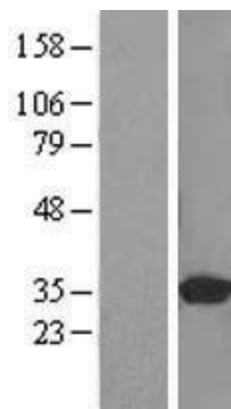
## Product images:



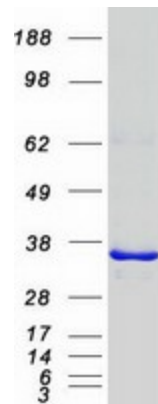
Circular map for RC204262



HEK293T cells were transfected with the pCMV6-ENTRY control (Cat# [PS100001], Left lane) or pCMV6-ENTRY PITPNB (Cat# RC204262, Right lane) cDNA for 48 hrs and lysed. Equivalent amounts of cell lysates (5 ug per lane) were separated by SDS-PAGE and immunoblotted with anti-PITPNB (Cat# [TA809305])(1:2000). Positive lysates [LY415778] (100ug) and [LC415778] (20ug) can be purchased separately from OriGene.



Western blot validation of overexpression lysate (Cat# [LY415778]) using anti-DDK antibody (Cat# [TA50011-100]). Left: Cell lysates from untransfected HEK293T cells; Right: Cell lysates from HEK293T cells transfected with RC204262 using transfection reagent MegaTran 2.0 (Cat# [TT210002]).



Coomassie blue staining of purified PITPNB protein (Cat# [TP304262]). The protein was produced from HEK293T cells transfected with PITPNB cDNA clone (Cat# RC204262) using MegaTran 2.0 (Cat# [TT210002]).