

Product datasheet for **RC204261**

KTI12 (NM_138417) Human Tagged ORF Clone

Product data:

Product Type: Expression Plasmids
Product Name: KTI12 (NM_138417) Human Tagged ORF Clone
Tag: Myc-DDK
Symbol: KTI12
Synonyms: SBB181; TOT4
Mammalian Cell Selection: Neomycin
Vector: pCMV6-Entry (PS100001)
E. coli Selection: Kanamycin (25 ug/mL)
ORF Nucleotide Sequence: >RC204261 ORF sequence
Red=Cloning site Blue=ORF Green=Tags(s)

TTTTGTAATACGACTCACTATAGGGCGGCCGGAATTCGTCGACTGGATCCGGTACCGAGGAGATCTGCC
GCC**CGATCGCC**

ATGCCGCTCGTGGTGTGTTTGGGGCTGCCGTACAGCGGCAAGAGCCGGCGTGCTGAAGAGTTGCCGTGG
CGCTGGCTGCCGAGGGCCGCGCGGTGTACGTGGTGGACGACGCAGCTGTCCTGGGCGCAGAGGACCCAGC
GGTGTACGGCGATTCTGCCCGTGAGAAGGCATTGCGTGGAGCTCTGCGAGCCTCCGTGGAACGGCGCCTG
AGTCGCCACGACGTGGTCATCCTGGACTCGTTAACTACATCAAAGGTTCCGTTACGAGCTCTACTGCC
TGGCACGGGCGGCGGCACCCCGCTCTGCCTGGTCTACTGCGTACGGCCCGCGGCCGATCGCGGGACC
TCAGGTGGCGGGCGCAACGAGAACCCTGGCCGGAACGTCAAGTGTGAGTTGGCGGCCACGCGCTGAGGAG
GACGGGAGAGCCAGGCGGGCGGAGCAGCGTCTCAGGAACTGCATACTGCGGACTCTGTAGTAAATG
GAAGTGCCAGGCGGACGTACCCAAGGAACTGGAGCGAGAAGAATCCGGGGCTGCGGAGTCTCCAGCTCT
TGTGACTCCGGATTACAGAGAAATCTGCAAAGCATGGGTCCGGTGCCTTTACTCTCCCGAACTCCTGGAG
GCCCTAACGCTGCGCTTTGAGGCTCCCGATTCTCGGAATCGTGGGACCGGCCTTTATCACTTTGGTGG
GCCTAGAGGAGCGGTTGCCCTGGCGGGATCCGCTCTGCCCTGTTTGAACCGGGCCCCACCACCCCA
TCAGTCTACGCAGTCCCAGCCCCCTCGCTCCGGCAGCTTCTGCACCAGTTGGACCAGGTCACGAGTCAA
GTACTGGCCGATTGATGGAAGCGCAGAAGAGCGCTGTCCCGGGGACTTGCTCACGCTTCTGGTACCA
CAGAGCACTTGGGTTTACCCGGCCCTTGACCATGGCAGAACTGAGTCGCCTTCGTCGCCAGTTTATTTC
GTACACTAAAATGCATCCCAACAATGAGAACTTGCCGCAACTGGCCAACATGTTTCTTTCAGTATTTGAGC
CAGAGCTGCAC

ACGCGTACGCGGCCGCTCGAGCAGAACTCATCTCAGAAGAGGATCTGGCAGCAAATGATATCCTGGATT
ACAAGGATGACGACGATAAGGTTTAA



[View online »](#)

Protein Sequence: >RC204261 protein sequence
Red=Cloning site Green=Tags(s)

MPLVVF CGLPYS GKSRRAEELRVALAAEGRAVYVVDAAVLGAEDPAVYGDSAREKALRGALRASVERRL
 SRHDVVILD SLNYIKGFRYEL YCLARAARTPLCLVYCVRPGGPIAGPQVAGANENPGRNVSVSWRPRAEE
 DGRAQAAGSSVLRHTADSVVNGSAQADV PKELEREESGAAESPALVTPDSEKSAKHGSGAFYSPELLE
 ALTLRFEAPDSRNRWDRPLFTLVGLEEPLPLAGIRSALFENRAPP HQSTQSQPLASGSFLHQLDQVTSQ
 VLAGLMEAQKSAVPGDLLTLPGTTEHLRFTRPLTMAEL SRLRRQFISYTKMHPNNENLPQLANMFLQYLS
 QSLH

TRTRPLEQKLISEEDLAANDILDYKDDDDKV

Chromatograms: https://cdn.origene.com/chromatograms/mk6567_f01.zip

Restriction Sites: SgfI-MluI

Cloning Scheme:



* The last codon before the Stop codon of the ORF

ACCN: NM_138417

ORF Size: 1062 bp

OTI Disclaimer: The molecular sequence of this clone aligns with the gene accession number as a point of reference only. However, individual transcript sequences of the same gene can differ through naturally occurring variations (e.g. polymorphisms), each with its own valid existence. This clone is substantially in agreement with the reference, but a complete review of all prevailing variants is recommended prior to use. [More info](#)

OTI Annotation: This clone was engineered to express the complete ORF with an expression tag. Expression varies depending on the nature of the gene.

Components: The ORF clone is ion-exchange column purified and shipped in a 2D barcoded Matrix tube containing 10ug of transfection-ready, dried plasmid DNA (reconstitute with 100 ul of water).

Reconstitution Method:

1. Centrifuge at 5,000xg for 5min.
2. Carefully open the tube and add 100ul of sterile water to dissolve the DNA.
3. Close the tube and incubate for 10 minutes at room temperature.
4. Briefly vortex the tube and then do a quick spin (less than 5000xg) to concentrate the liquid at the bottom.
5. Store the suspended plasmid at -20°C. The DNA is stable for at least one year from date of shipping when stored at -20°C.

RefSeq: [NM_138417.3](#)

RefSeq Size: 1712 bp

RefSeq ORF: 1065 bp

Locus ID: 112970

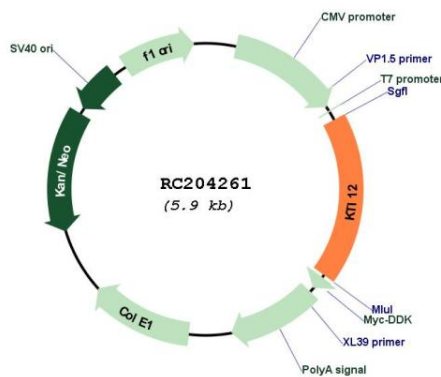
UniProt ID: [Q96EK9](#)

Cytogenetics: 1p32.3

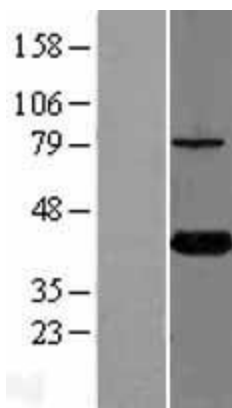
Protein Families: Druggable Genome

MW: 38.6 kDa

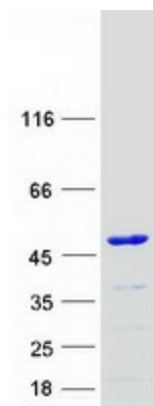
Product images:



Circular map for RC204261



Western blot validation of overexpression lysate (Cat# [LY408674]) using anti-DDK antibody (Cat# [TA50011-100]). Left: Cell lysates from untransfected HEK293T cells; Right: Cell lysates from HEK293T cells transfected with RC204261 using transfection reagent MegaTran 2.0 (Cat# [TT210002]).



Coomassie blue staining of purified KTI12 protein (Cat# [TP304261]). The protein was produced from HEK293T cells transfected with KTI12 cDNA clone (Cat# RC204261) using MegaTran 2.0 (Cat# [TT210002]).